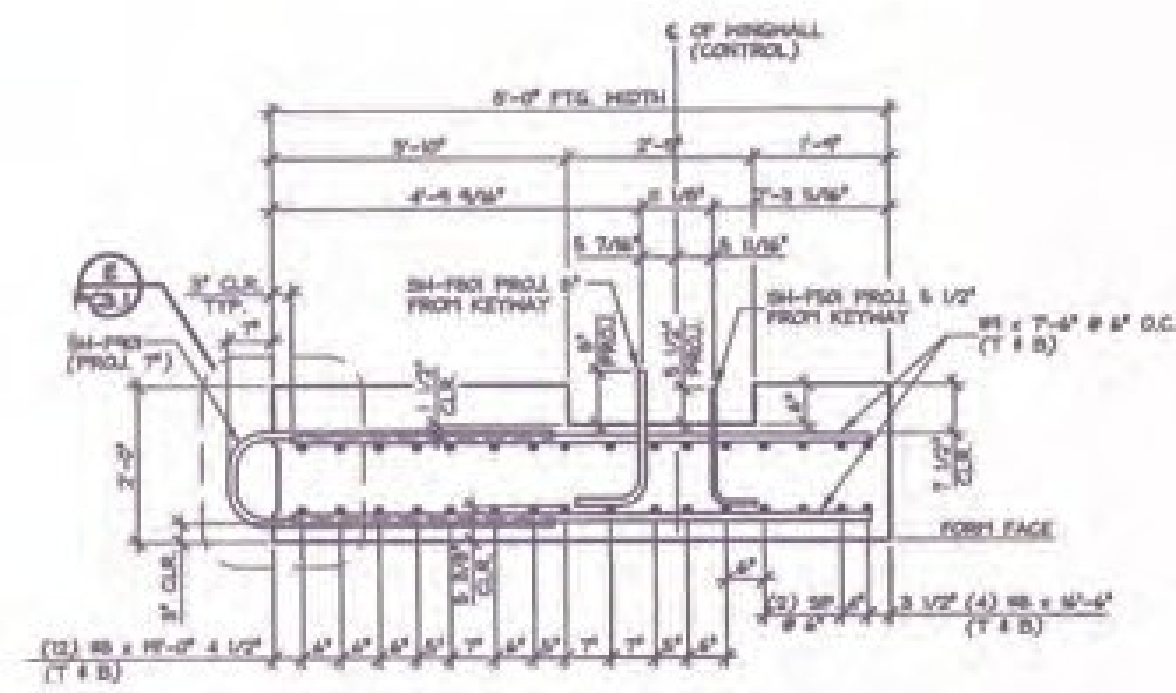
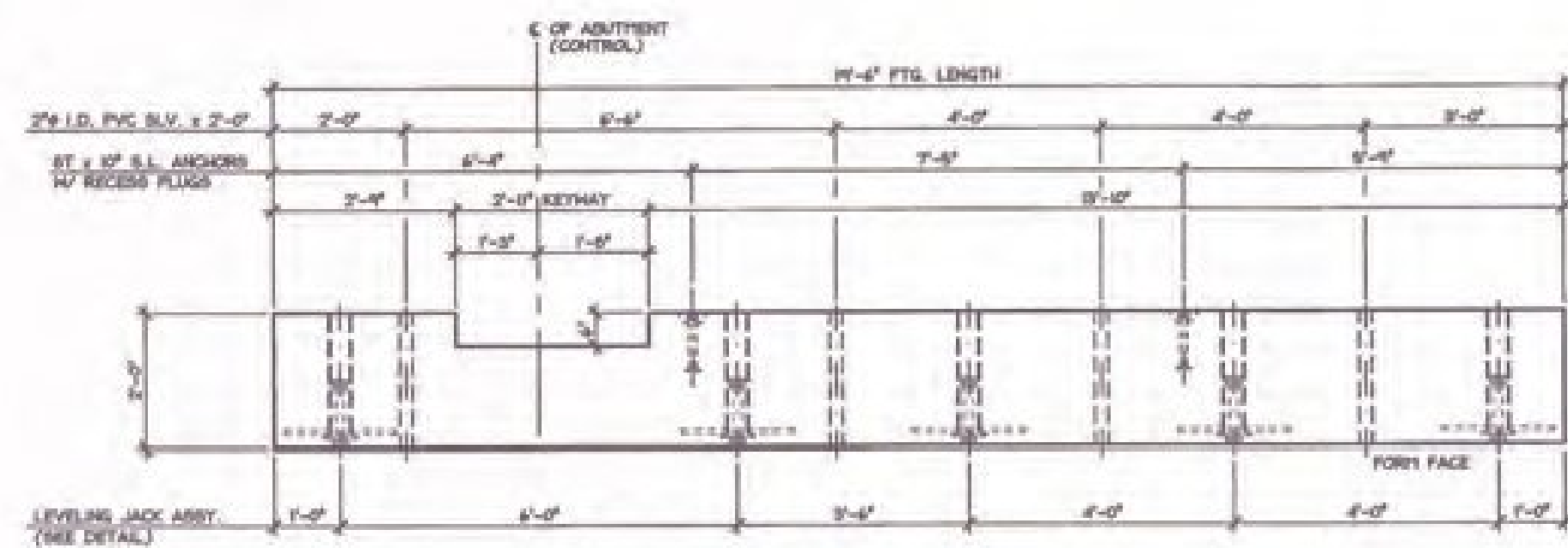


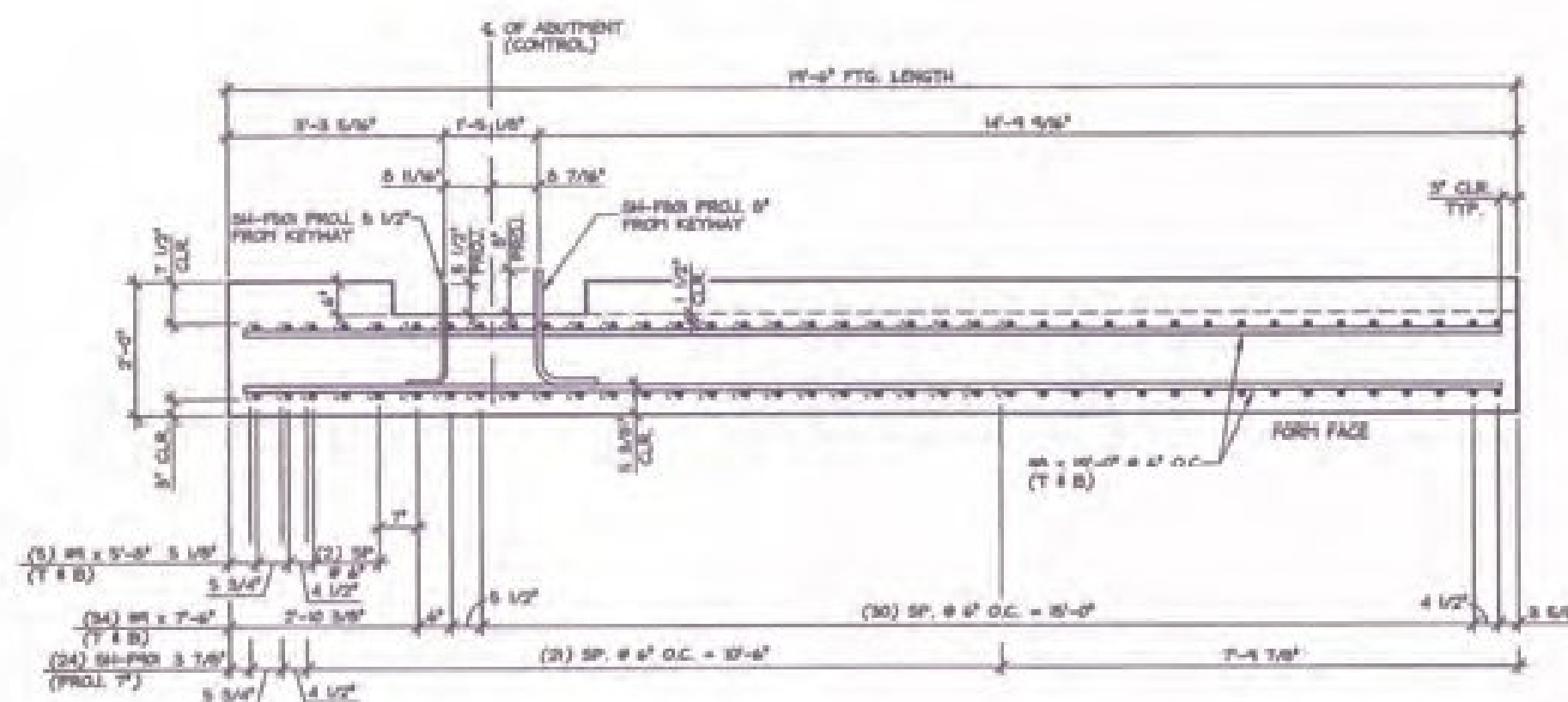
**A** DIMENSIONAL SECTION A-A  
1/2" = 1'-0"



**C** REINFORCING SECTION C-C  
1/2" = 1'-0"

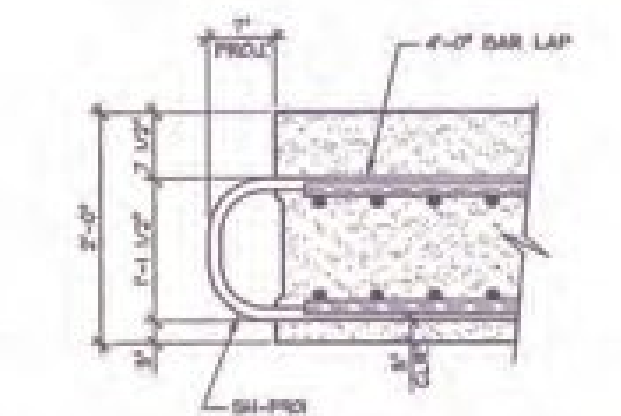


**B** DIMENSIONAL SECTION B-B  
1/2" = 1'-0"



**D** REINFORCING SECTION D-D  
1/2" = 1'-0"

T = TOP BAR  
B = BOTTOM BAR



**E** REINFORCING DETAIL  
3/4" = 1'-0"



**F** KEYWAY DETAIL  
3/4" = 1'-0"

SUBMITTED  
JAN 27 2014  
J.P. CARRARA & SONS, INC.  
MIDDLEBURY, VT 05753

MARK	QTY.	WT.	VOL.
SHF-2	1	20.77 T	10.26 cy

ITEM	MARK	DESCRIPTION	QTY.
1			
2			
3			
4			
5			
6			
7			
8			
9			
10			
11			
12			
13			
14			
15			

Vermont Agency of Transportation  
**RECEIVED**  
 ON: January 28, 2014  
 and Checked for  
**CONFORMANCE**  
 BY: Jennifer Fitch DATE: 02/04/2014

**SHOP DRAWING REVIEW**

REVIEWED AS REQUIRED BY THE CONSTRUCTION CONTRACT CONDITIONS AND APPROVED FOR CONSTRUCTION BY THE DESIGN PROFESSIONAL. THE CONTRACTOR IS RESPONSIBLE FOR OBTAINING ALL NECESSARY PERMITS AND APPROVALS FROM THE LOCAL AUTHORITIES. THE CONTRACTOR IS RESPONSIBLE FOR OBTAINING ALL NECESSARY PERMITS AND APPROVALS FROM THE LOCAL AUTHORITIES.

**VHB**  
 VTB GROUP, INC.  
 1000 Rte. 100, Middlebury, VT 05753  
 Tel: 802-249-1000  
 Fax: 802-249-1001

APPROVAL STAMP:

U2704 GENERAL REVISION T.D.  
 U2704 GENERAL REVISION T.D.

**J.P. CARRARA & SONS INC.**  
 Precast & Prestress Manufacturer  
 1000 Rte. 100, Middlebury, Vermont 05753 Phone: (802)249-1000 Fax: (802)249-1001

**T. BUCK CONSTRUCTION**  
 CONTRACTOR  
 AUBURN, MAINE

STATE OF VERMONT AGENCY OF TRANSPORTATION  
 COUNTY OF ADDISON

DATE: OCT. 9, 2013  
 SCALE: NOTED  
 CHKD: DFM: T.D.  
 JOB NO: 2841-018  
 DWG. NO: PC3.1

TOWN OF MIDDLEBURY  
 ROUTE NO. VT 126, EAST MIDDLEBURY GORGE  
 BRIDGE NO. 1B PROJECT NO. R68 0174(B)

P/C FOOTING DETAILS