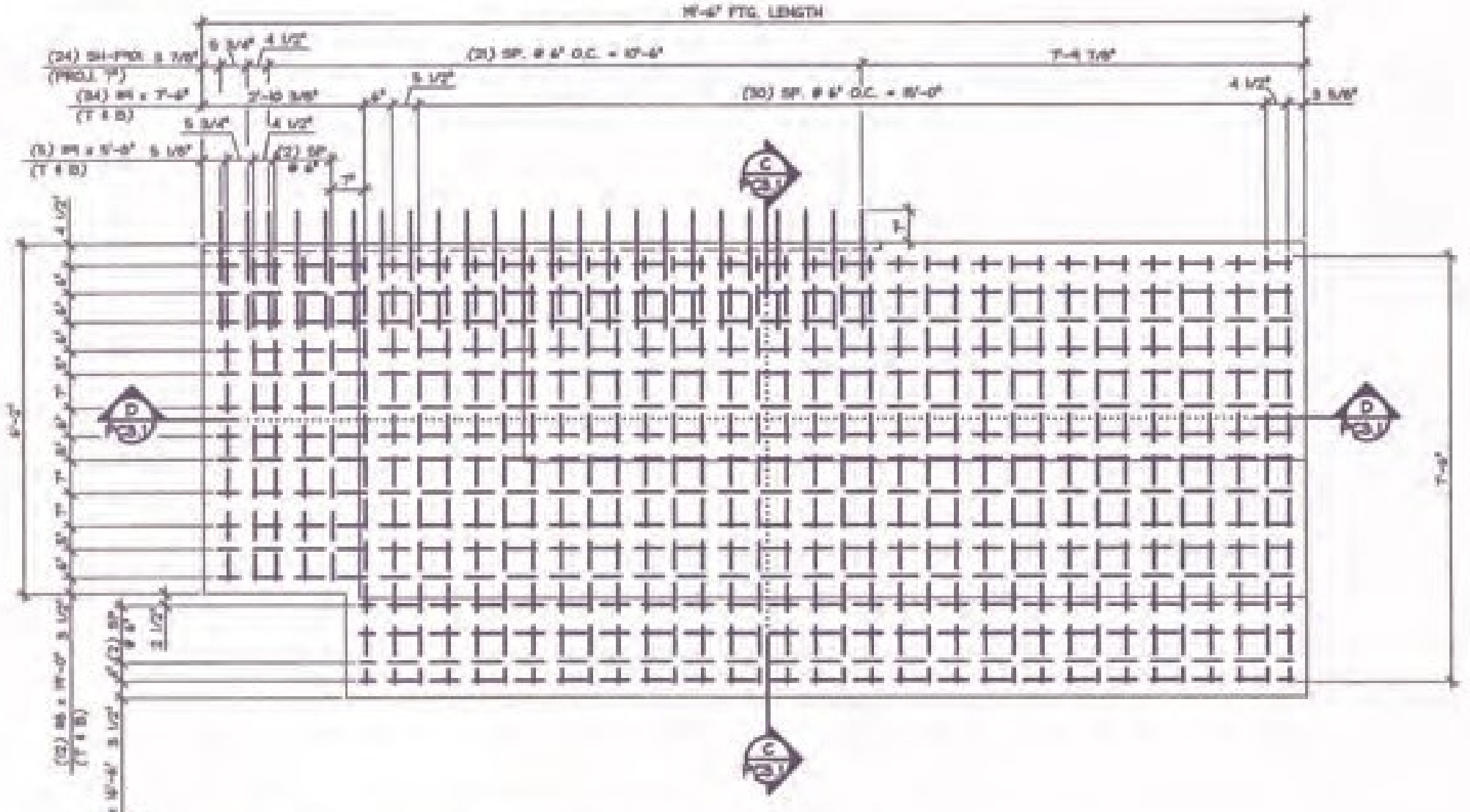
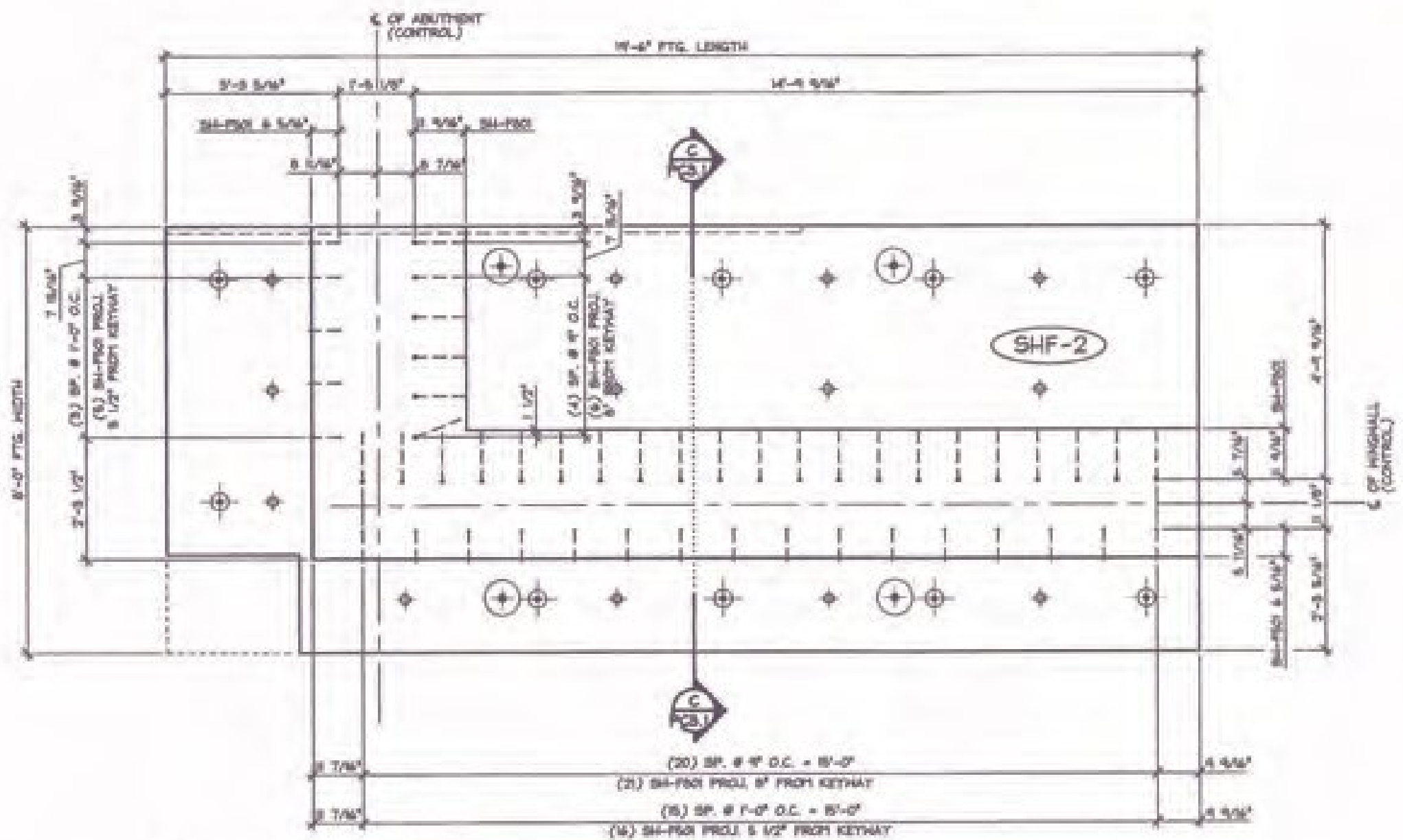


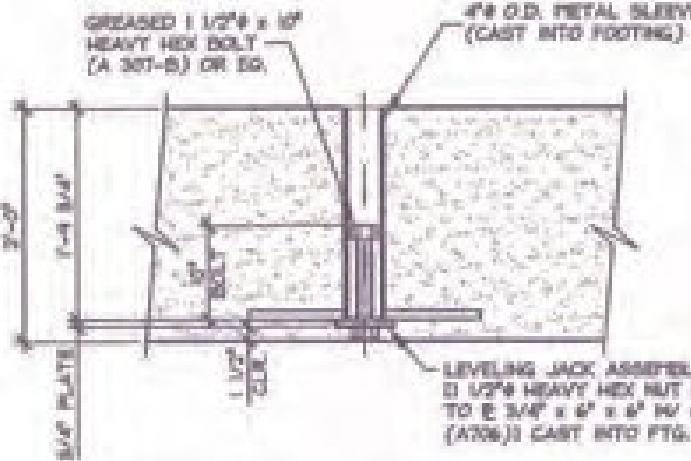
1 DIMENSIONAL PLAN VIEW IN FORM  
PC3 1/2" = 1'-0"



2 REINFORCING PLAN VIEW IN FORM  
PC3 1/2" = 1'-0"



3 PROJECTING REINFORCING PLAN VIEW IN FORM  
PC3 1/2" = 1'-0"



LEVELING JACK SECTION  
3/4" = 1'-0"

Vermont Agency of Transportation  
**RECEIVED**  
ON: January 28, 2014  
and Checked for  
**CONFORMANCE**  
BY: Jennifer Fitch DATE: 02/04/2014

SUBMITTED  
JAN 27 2014  
J.P. Carrara & Sons, Inc.  
Middlebury, VT 05753

NOTE: SEE DRAWING PC3.1 FOR REINFORCEMENT

8000 PSI @ RELEASE  
5000 PSI @ 28 DAYS  
15K DESIGN-48F0CC

MARK	SHF-2	QTY.	1	WT.	20.77 T	VOL.	10.26 cy
MATERIAL LIST / FOOTING							
ITEM	MARK	DESCRIPTION	QTY.				
1	RS x 14'-0"	(BLACK)	5				
2	RS x 14'-0"	(BLACK)	24				
3	RS x 14'-0"	(BLACK)	10				
4	RS x 14'-0"	(BLACK)	68				
5	SH-PSD	RS BENT BAR (BLACK)	24				
6	SH-PSD	RS BENT BAR (BLACK)	27				
7	SH-PSD	RS BENT BAR (BLACK)	28				
8	3/4" x 3/4"	FERRULE LOOP INSERT (GALV.)	5				
9							
10	DAYTON 20T x 14 S/L	SHFT LIFT (WITH RECESS PLUG)	4				
11	2" I.D. x 2'-0"	PVC SLEEVE	18				
12							
13		LEVELING JACK ASSEMBLY	10				
14							
15							

- SHOP NOTES:**
- HOLD LAYOUT AND PROJECTION OF SH-PSD & SH-PSD PROJECTING BARS.
  - HOLD LAYOUT AND DEPTH OF 6" KEYWAY.
  - USE TEMPLATE TO COORDINATE PROJECTING REINFORCEMENT WITH NPIS SPALICE SLEEVE LOCATIONS IN HINGE WALLS & ABUTMENTS.
  - PROJECTING SH-PSD BARS SHALL BE PLACED AS SHOWN WITH 1/2" TOLERANCE.
  - ADJUST LEVELING BOLTS AND GROUT SLEEVES AS REQUIRED TO CLEAR REINFORCEMENT PATHS.

**SHOP DRAWING REVIEW**

X REVIEWED BY: [Signature] DATE: 1-31-2014

Y REVIEWED BY: [Signature] DATE: 1-31-2014

Z REVIEWED BY: [Signature] DATE: 1-31-2014

1/31/14 GENERAL REVISION T.D.

**APPROVAL STAMP:**

J.P. CARRARA & SONS INC. T. BUCK CONSTRUCTION  
Precast & Prestress Manufacturer CONTRACTOR  
AUBURN, MAINE

STATE OF VERMONT AGENCY OF TRANSPORTATION COUNTY OF ADDISON DATE: OCT. 9, 2013  
SCALE: NOTED

TOWN OF MIDDLEBURY ROUTE NO. VT 125, EAST MIDDLEBURY GORGE BRIDGE NO. 13 PROJECT NO. RS 0174(5) CHKD: DFTM: T.D.  
JOB NO: 2541-013 DWG. NO: PC3

P/C FOOTING DETAILS