

Vermont Agency of Transportation  
**RECEIVED**  
 ON: January 28, 2014  
 and Checked for  
**CONFORMANCE**  
 BY: Jennifer Fitch DATE: 02/04/2014

SUBMITTED  
 JAN 27 2014  
 J.P. Carrara & Sons, Inc.  
 Middlebury, VT 05753

NOTE: SEE DRAWING PCI.1 FOR REINFORCEMENT

3500 PSI # RELEASE  
 3000 PSI # 28 DAYS  
 PER DESIGN 448PCCC

ITEM	MARK	DESCRIPTION	QTY.
1			
2			
3			
4		DAYTON 20T x 14 SHF SHFT LIFT (WITH RECESS PLUG)	4
5		2" I.D. x 2'-0" PVC SLEEVE	24
6		LEVELING JACK ASSEMBLY	12
7		3/4" x 14 FERRULE LOOP INSERT (GALV.)	6
8			
9			
10			
11	SH-F00	R5 BENT BAR (BLACK)	33
12	SH-F00	R5 BENT BAR (BLACK)	25
13			
14			
15			

- SHOP NOTES:**
1. HOLD LAYOUT AND PROJECTION OF SH-F00 & SH-F00 PROJECTING BARS.
  2. HOLD LAYOUT AND DEPTH OF 4" KEYWAY.
  3. USE TEMPLATE TO COORDINATE PROJECTING REINFORCEMENT WITH REB SPICE SLEEVE LOCATIONS IN WIRE HALLS & ADJUSTMENTS.
  4. PROJECTING SH-F00 BARS SHALL BE PLACED AS SHOWN WITH 1/2" TOLERANCE.
  5. ADJUST LEVELING BOLTS AND GROUT SLEEVES AS REQUIRED TO CLEAR REINFORCEMENT MATS.

**SHOP DRAWING REVIEW**

Reviewed by: *S. J. Miller*  
 Date: 1-31-2014

VHB  
 Vermont Highway Builders, Inc.

1/4" GENERAL REVISION T.D.

APPROVAL STAMP:

J.P. CARRARA & SONS INC.  
 Precast & Prestress Manufacturer  
 100 OLD RD., MIDDLEBURY, VERMONT 05753 Phone: (802)348-6261 Fax: (802)348-6900

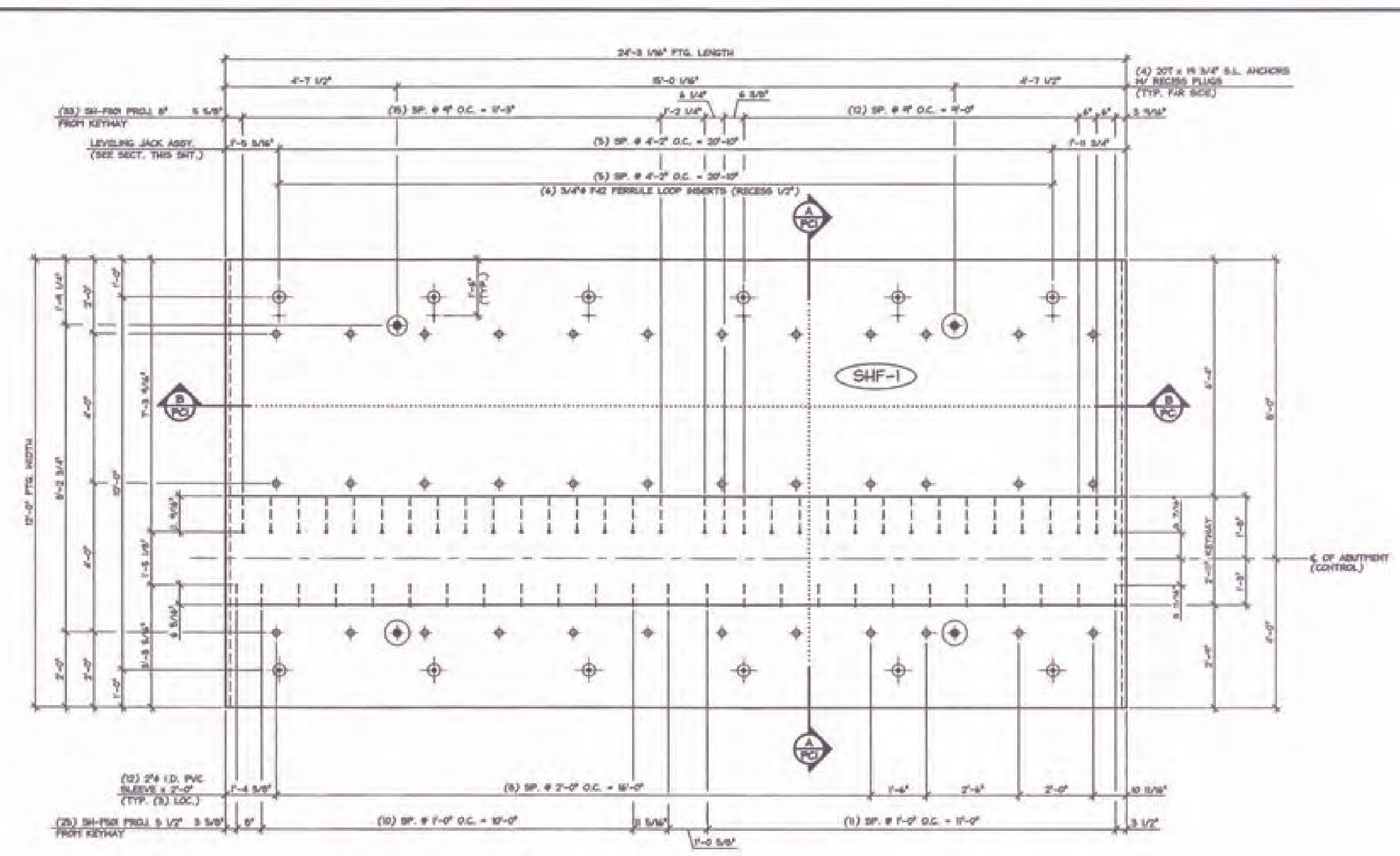
T. BUCK CONSTRUCTION  
 CONTRACTOR  
 AUBURN, MAINE

STATE OF VERMONT AGENCY OF TRANSPORTATION  
 COUNTY OF ADDISON

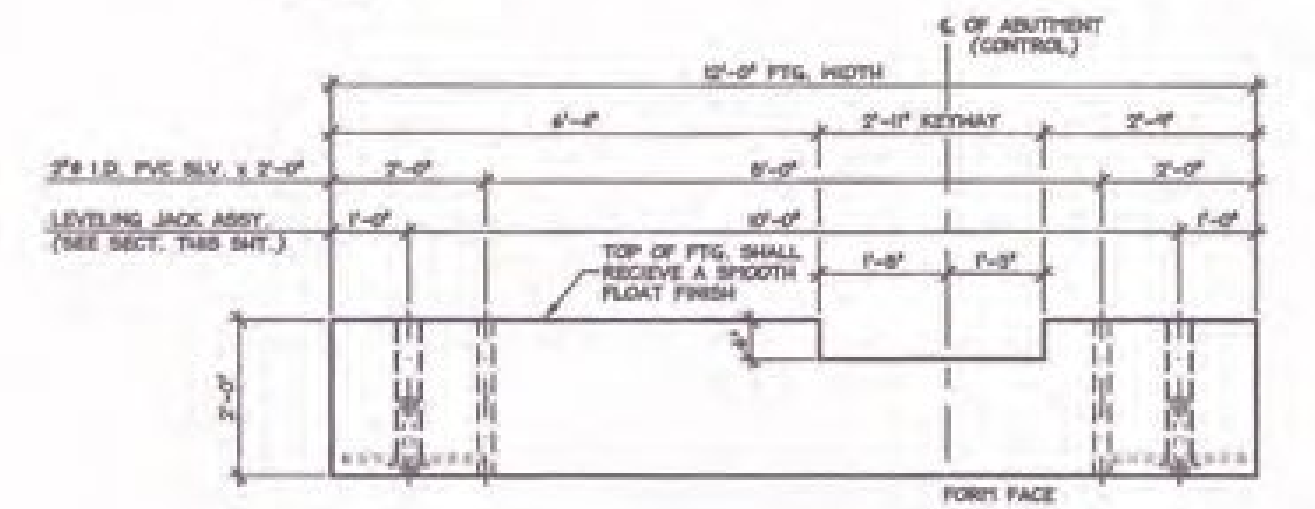
TOWN OF MIDDLEBURY  
 ROUTE NO. VT 125, EAST MIDDLEBURY GORGE  
 BRIDGE NO. 1 B PROJECT NO. 1B 0174(8)

P/C FOOTING DETAILS

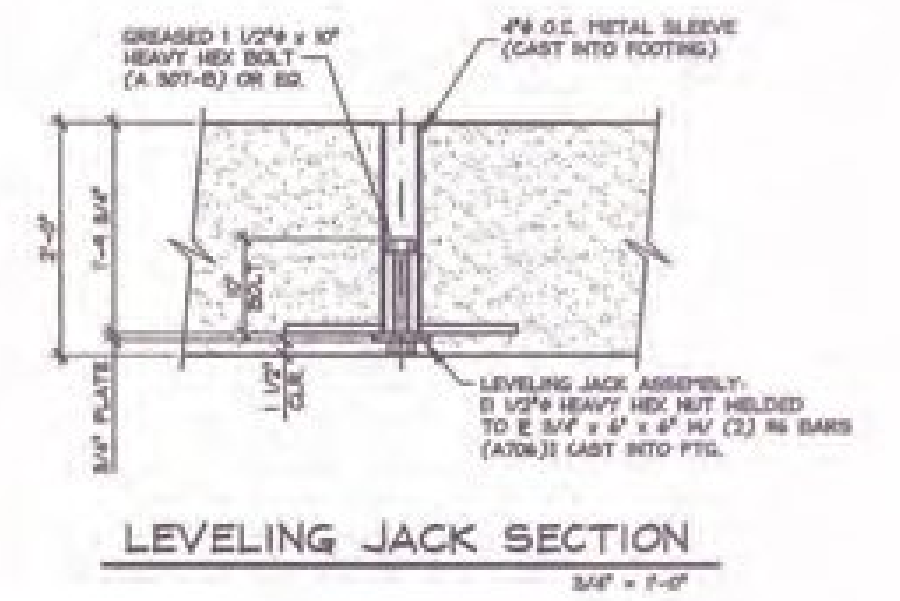
DATE: OCT. 9, 2013  
 SCALE: NOTED  
 CHKD: DFM: T.D.  
 JOB NO: 25411-013  
 DRG. NO: PCI



**I DIMENSIONAL PLAN VIEW IN FORM**  
 1/2" = 1'-0"



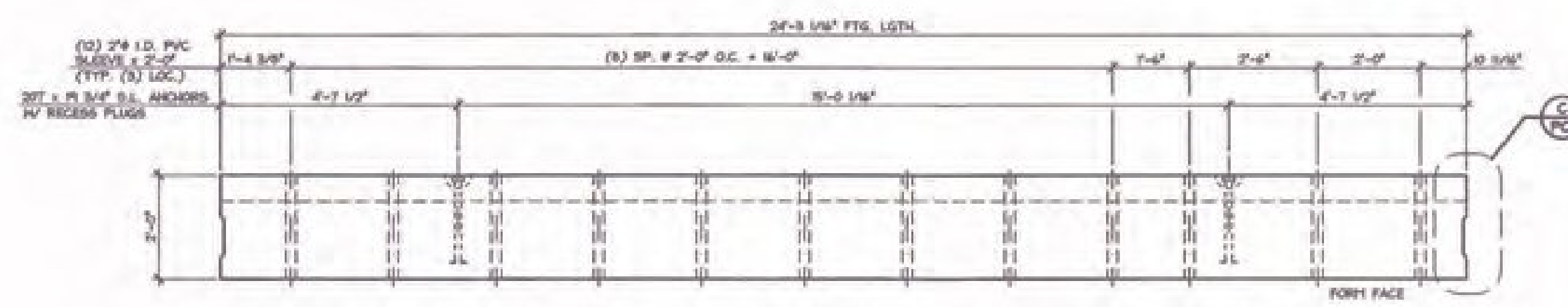
**A DIMENSIONAL SECTION A-A**  
 1/2" = 1'-0"



**LEVELING JACK SECTION**  
 3/4" = 1'-0"



**C KEYWAY DETAIL**  
 3/4" = 1'-0"



**B DIMENSIONAL SECTION B-B**  
 1/2" = 1'-0"