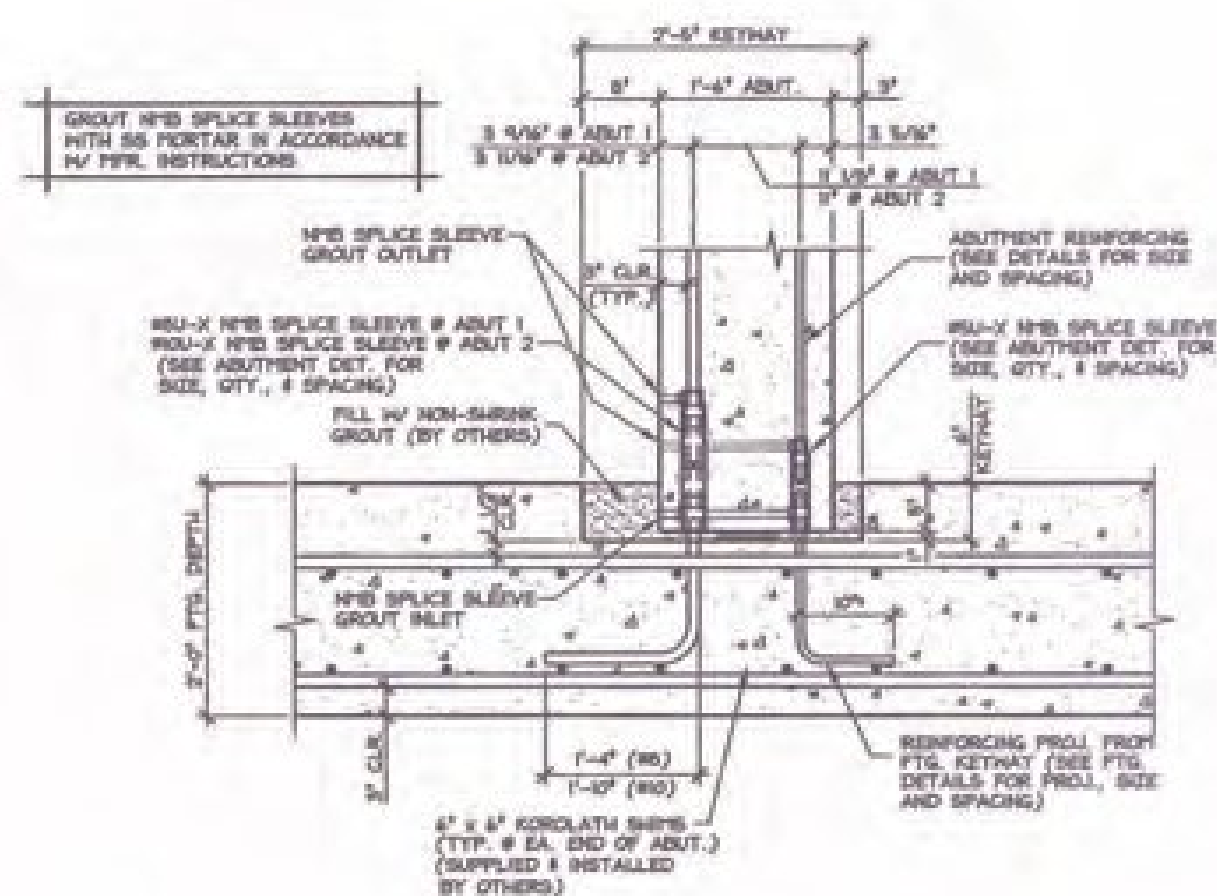
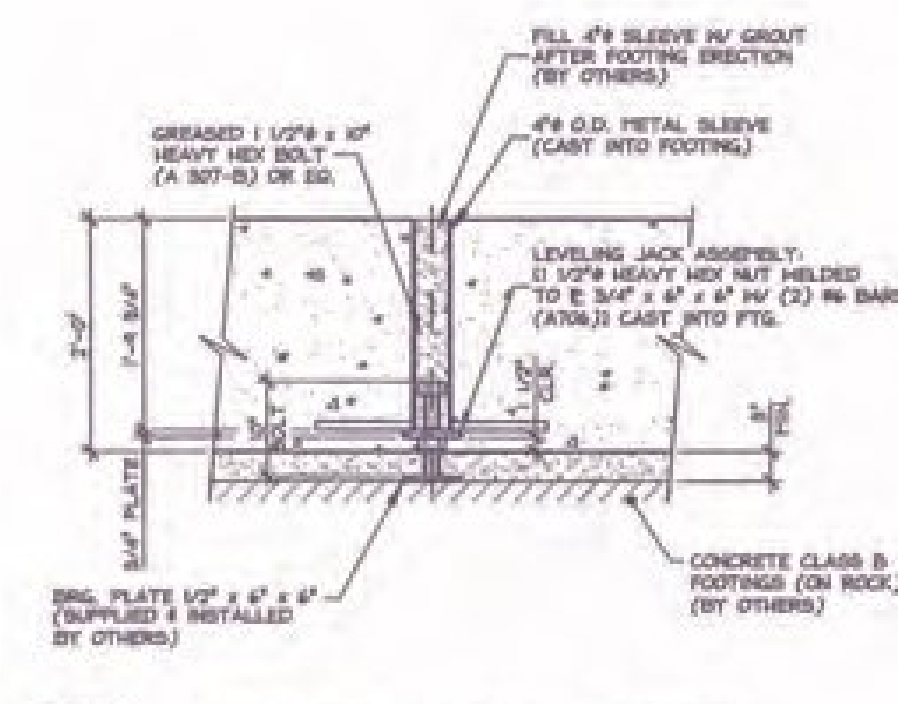


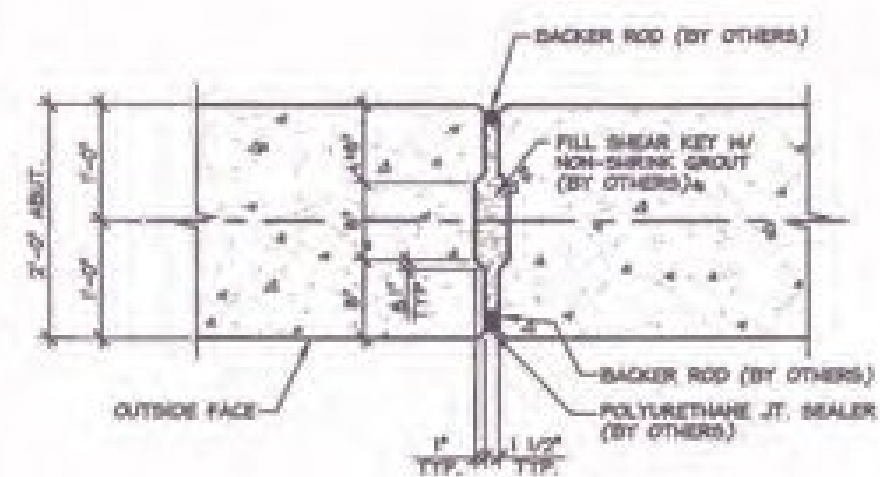
D STEM JOINT SECTION
F4 (AT ABUTMENT) 3/4" = 1'-0"



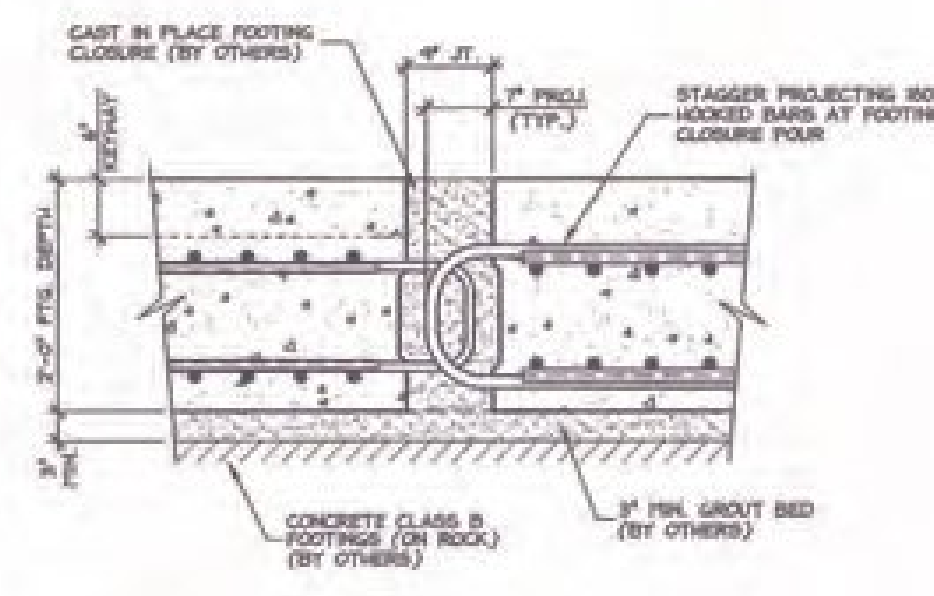
E STEM JOINT SECTION
F4 (AT WINGWALL) 3/4" = 1'-0"



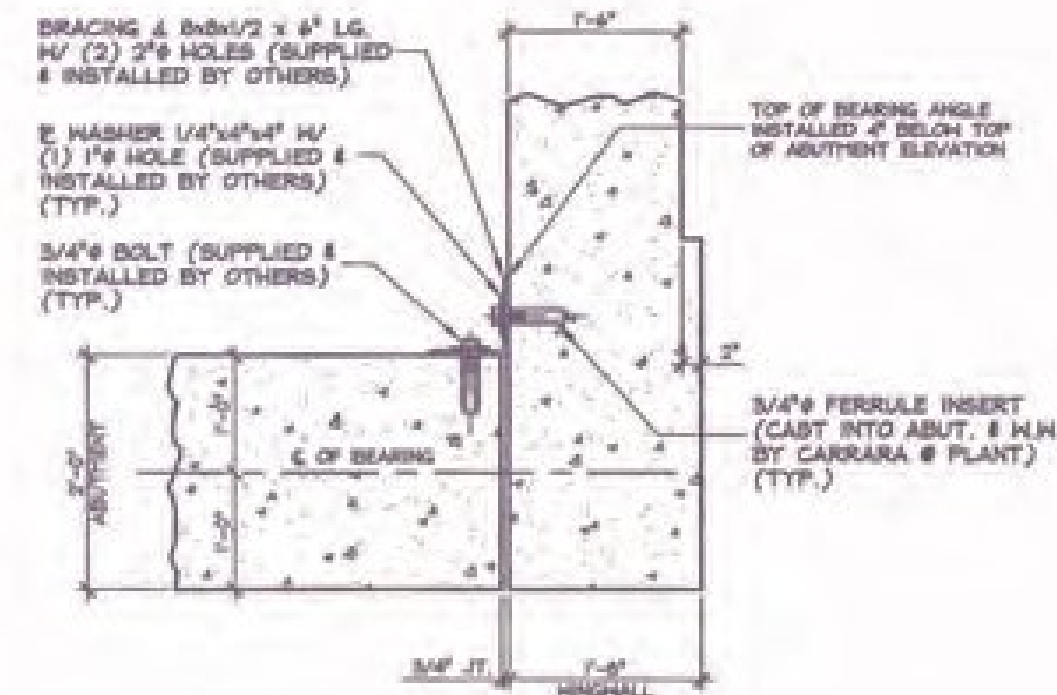
F LEVELING JACK SECTION
F4 3/4" = 1'-0"



G ABUTMENT SHEAR KEY SECTION
F4 3/4" = 1'-0"



H FOOTING SHEAR KEY SECTION
F4 3/4" = 1'-0"



K CORNER BRACING DETAIL
F4 3/4" = 1'-0"

Vermont Agency of Transportation
RECEIVED
 ON: January 28, 2014
 and Checked for
CONFORMANCE
 BY: Jennifer Fitch DATE: 02/04/2014

SHOP DRAWING REVIEW

REVIEWED AS SHOWN IN THE CONSTRUCTION CONTRACT DOCUMENTS AND APPROVED FOR THE VERMONT AGENCY OF TRANSPORTATION BY THE DESIGN PROFESSIONAL ON THE DATE SHOWN BELOW.

DESIGNED BY: *[Signature]*
 CHECKED BY: *[Signature]*
 DATE: 1-21-2014

SUBMITTED
 JAN 27 2014
 J.P. Carrara & Sons, Inc.
 MIDDLEBURY, VT 05751

APPROVAL STAMP:	J.P. CARRARA & SONS INC. Precast & Prestress Manufacturer 201 USE DR. MIDDLEBURY, VT 05751 TEL: 802-249-3300 FAX: 802-249-3301	T. BUCK CONSTRUCTION CONTRACTOR AUBURN, MAINE
	STATE OF VERMONT AGENCY OF TRANSPORTATION COUNTY OF ADDISON	DATE: OCT. 9, 2015 SCALE: NOTED
	TOWN OF MIDDLEBURY ROUTE NO. VT 125, EAST MIDDLEBURY GORGE BRIDGE NO. 13 PROJECT NO. RS 0174(5)	CHKD: DFTM T.D. JOB NO: 25411-015 DWG. NO: F4