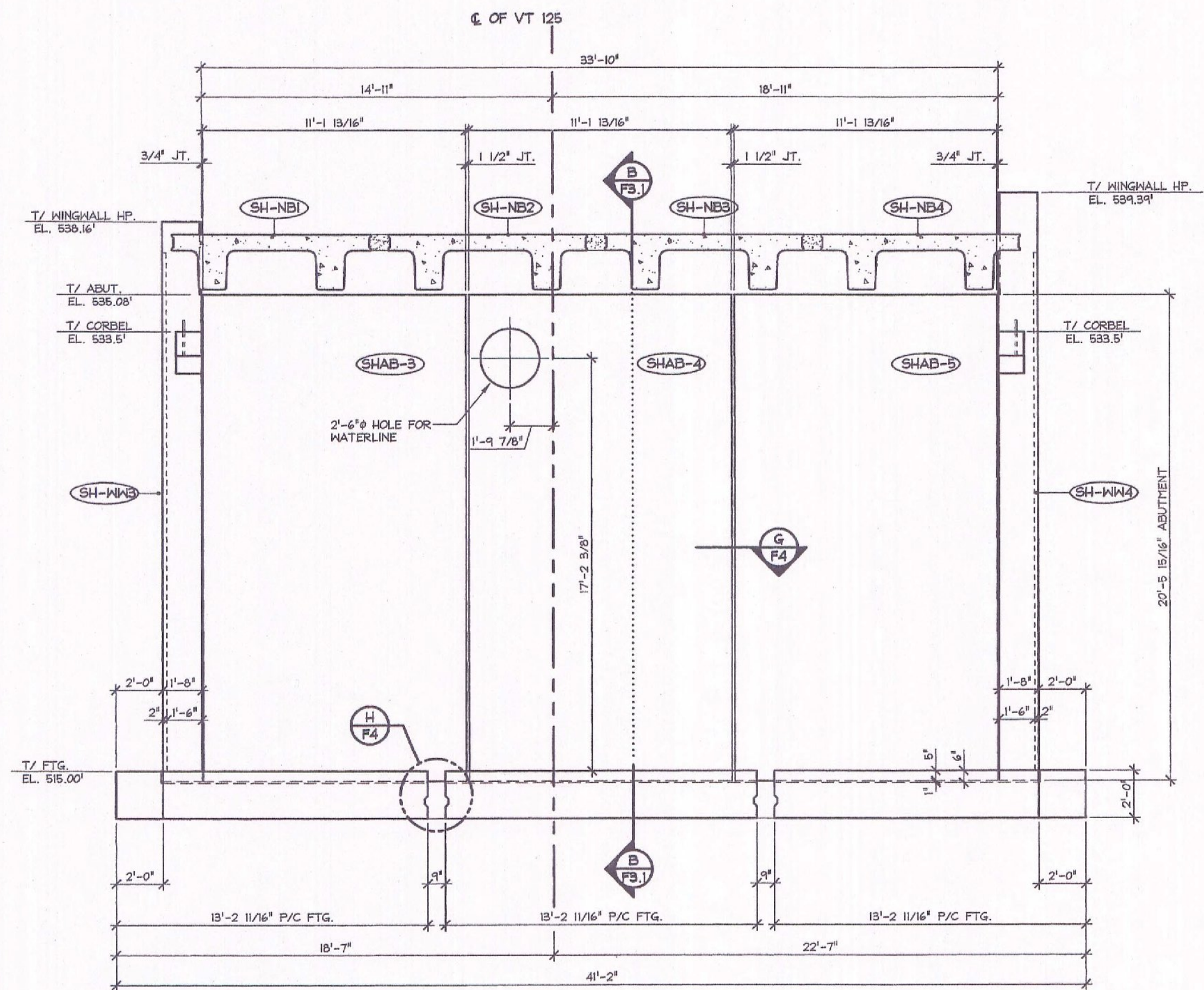
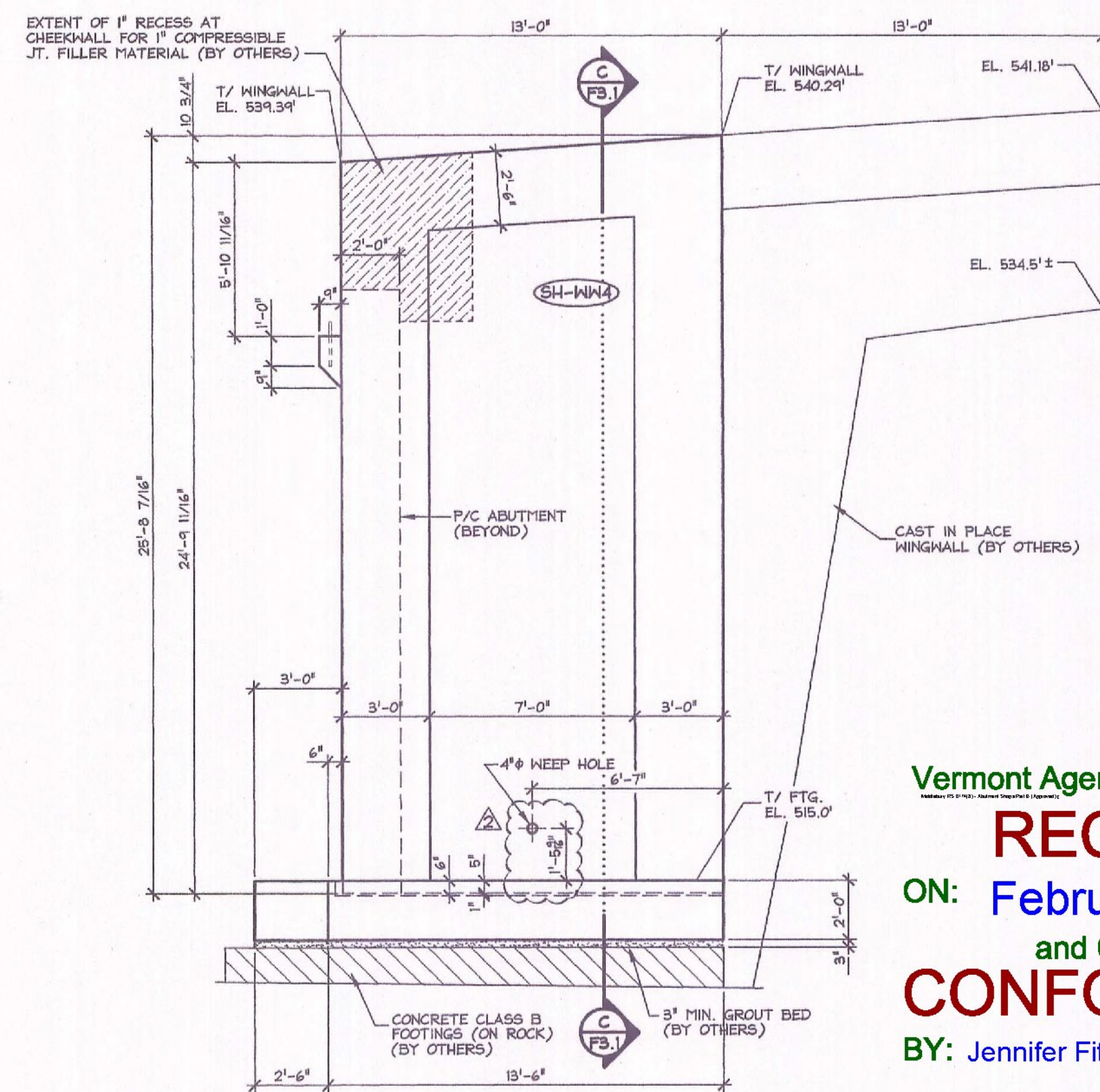


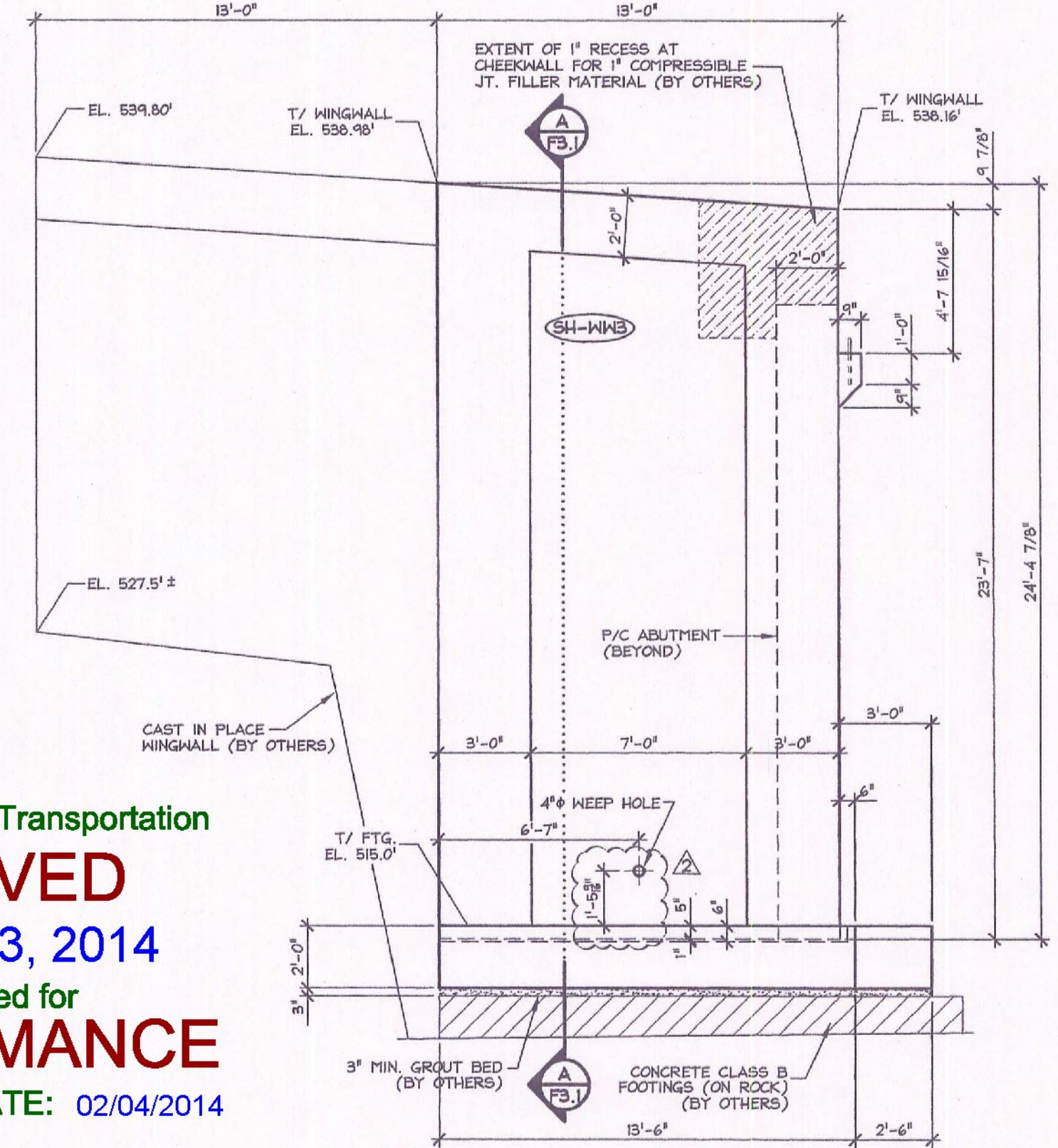
1 PLAN VIEW - ABUMENT-2  
F2.1 1/4" = 1'-0"



2 NORTH ELEVATION - ABUMENT-2  
F2.1 1/4" = 1'-0"



3 WEST ELEVATION WINGWALL - 4  
F2.1 1/4" = 1'-0"



4 EAST ELEVATION WINGWALL - 3  
F2.1 1/4" = 1'-0"

**SHOP DRAWING REVIEW**

REVIEWED AS REQUIRED BY THE CONSTRUCTION CONTRACT DOCUMENTS AND APPROVED, BUT ONLY FOR CONFORMANCE TO THE DESIGN CONCEPT OF THE WORK, AND SUBJECT TO FURTHER LIMITATIONS AND REQUIREMENTS CONTAINED IN THE CONSTRUCTION CONTRACT DOCUMENTS.

REJECTED  REVISE AND RESUBMIT  FURNISH AS CORRECTED

CORRECTIONS OR COMMENTS MADE ON THE SHOP DRAWINGS DURING THIS REVIEW DO NOT RELIEVE CONTRACTOR FROM COMPLIANCE WITH REQUIREMENTS OF THE DRAWINGS AND SPECIFICATIONS. THIS CHECK IS ONLY FOR REVIEW OF GENERAL CONFORMANCE WITH THE DESIGN CONCEPT OF THE PROJECT AND GENERAL COMPLIANCE WITH THE INFORMATION GIVEN IN THE CONTRACT DOCUMENTS. THE CONTRACTOR IS RESPONSIBLE FOR CORRECTING AND CORRELATING ALL QUANTITIES AND DIMENSIONS, SELECTING FABRICATION PROCESSES AND TECHNIQUES OF CONSTRUCTION, COORDINATING HIS WORK WITH THAT OF ALL OTHER TRADES, AND PERFORMING HIS WORK IN A SAFE AND SATISFACTORY MANNER.

**VHB**  
Vanessa Hangan Brunetta, Inc.

Job Number: 57438  
Reviewed By: M.J. MOZER  
Date: 2-3-2014

1-31-14 REVISED AS NOTED B.L.  
1-27-14 GENERAL REVISION T.D.

Vermont Agency of Transportation  
**RECEIVED**  
ON: February 3, 2014  
and Checked for  
**CONFORMANCE**  
BY: Jennifer Fitch DATE: 02/04/2014

SUBMITTED  
JAN 31 2014  
J.P. CARRARA & SONS, INC.  
MIDDLEBURY, VT 05753

APPROVAL STAMP:	<b>J.P. CARRARA &amp; SONS INC.</b> Precast & Prestress Manufacturer 244 OXEE STR., MIDDLEBURY, VERMONT 05753 Phone: (802)388-6361 Fax: (802)388-9010	<b>T. BUCK CONSTRUCTION</b> CONTRACTOR AUBURN, MAINE
STATE OF VERMONT AGENCY OF TRANSPORTATION COUNTY OF ADDISON		DATE: OCT. 9, 2013 SCALE: NOTED
TOWN OF MIDDLEBURY ROUTE NO. VT 126, EAST MIDDLEBURY GORGE BRIDGE NO.: 13 PROJECT NO.: RS 0174(B)		CHKD: DFTM: T.D. JOB NO: 2341-013
ABUMENT 2 LAYOUT & DETAILS		DWG. NO: F2.1