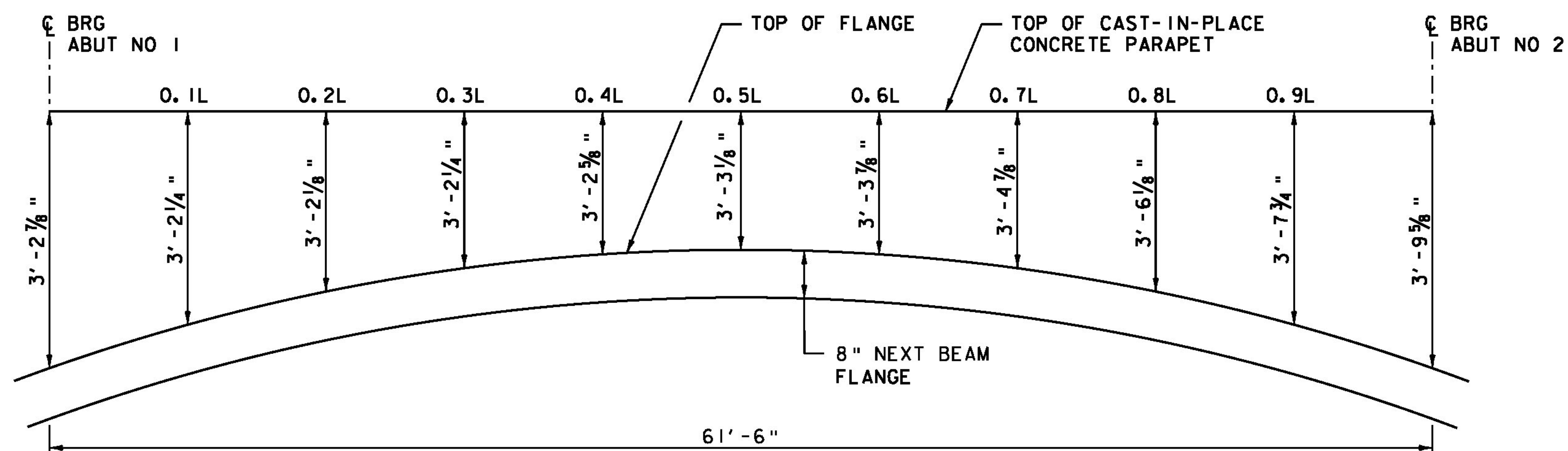
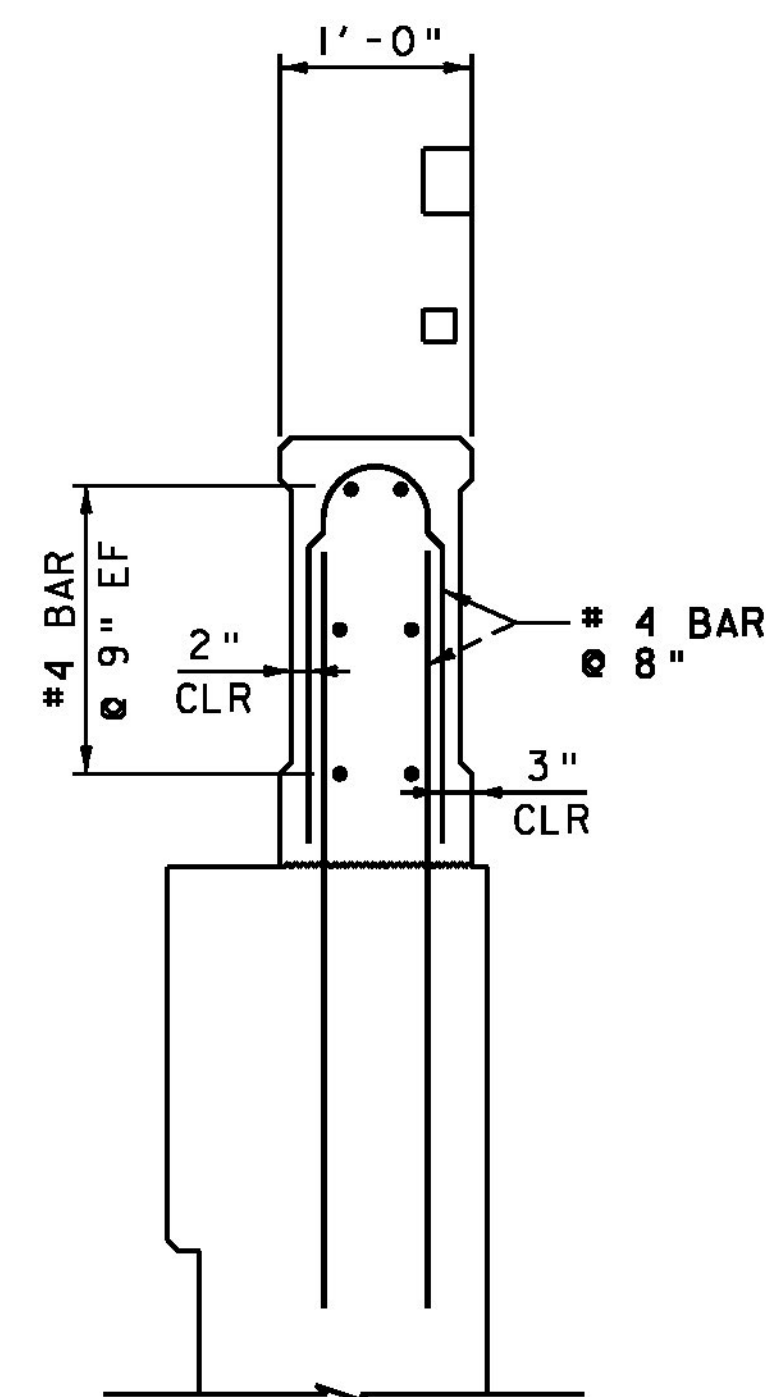


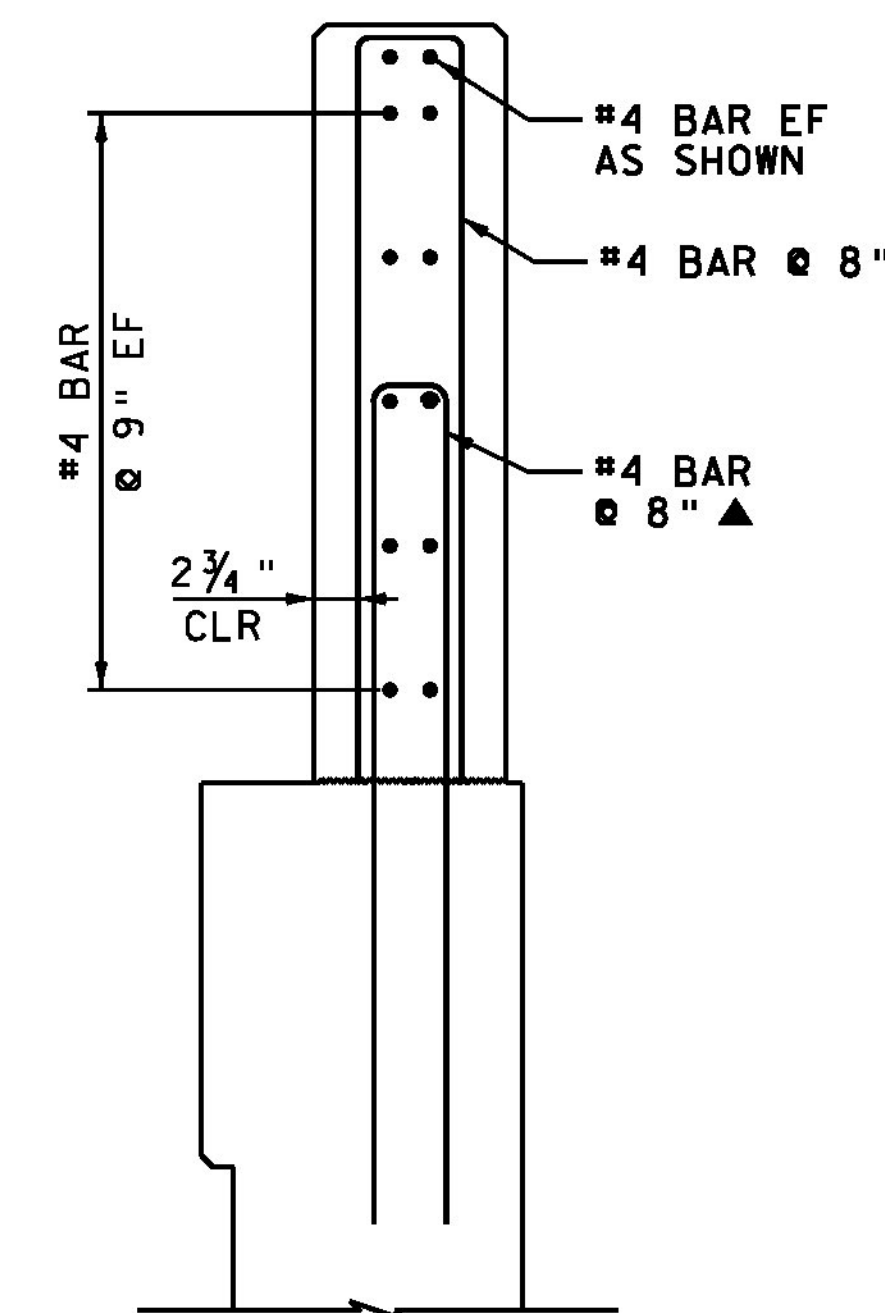
CAST-IN-PLACE CONCRETE PARAPET HEIGHT DETAIL (EAST SIDE)  
NOT TO SCALE



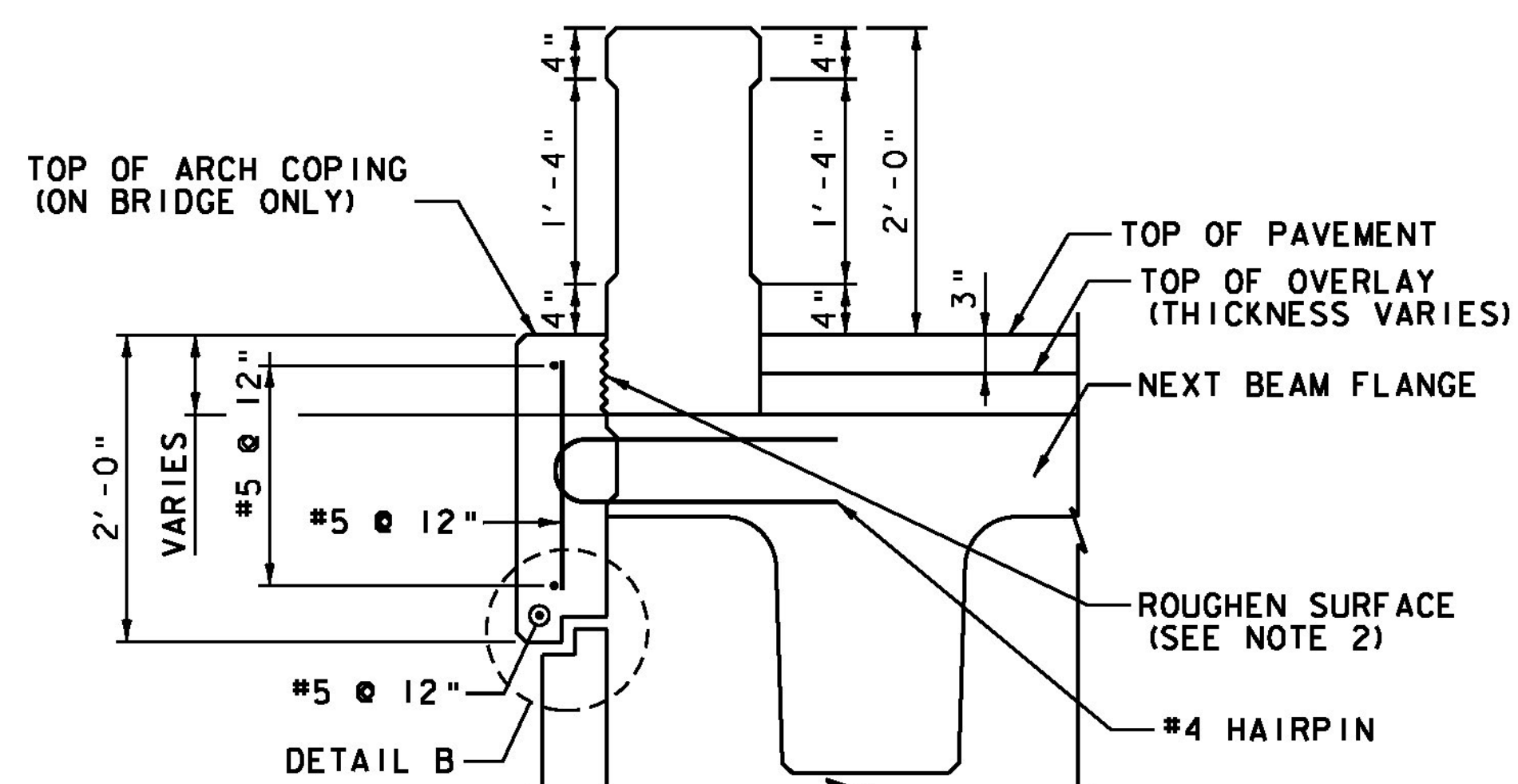
CAST-IN-PLACE CONCRETE PARAPET HEIGHT DETAIL (WEST SIDE)  
NOT TO SCALE



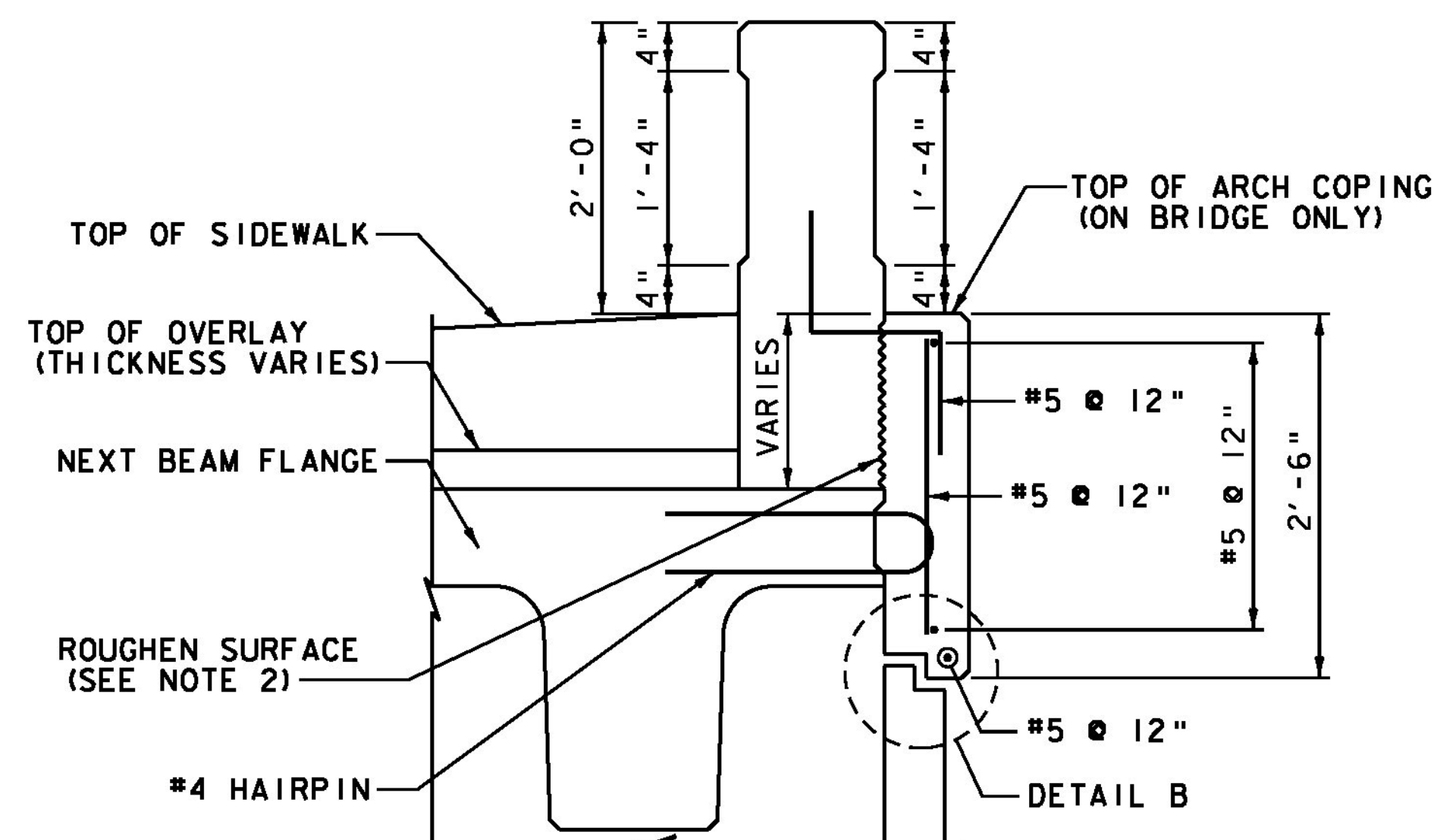
SECTION A-A  
(ON WINGWALL)  
SCALE 1" = 1'-0"



SECTION C-C  
SCALE 1" = 1'-0"



EAST RAILING  
SCALE 1" = 1'-0"



WEST RAILING  
SCALE 1" = 1'-0"

NOTES

1. SEE PRECAST ARCHITECTURAL PANEL DETAILS (1 OF 2) FOR DETAIL B.
2. PORTIONS OF THE CONCRETE BRIDGE RAILING IN CONTACT WITH THE CAST-IN-PLACE COPING SHALL RECEIVE A ROUGHENED SURFACE. ALL VERTICAL SURFACES ON NEXT BEAM AND BRIDGE RAILING IN CONTACT WITH THE COPING SHALL BE COATED WITH AN APPROVED EPOXY BONDING COMPOUND IN ACCORDANCE WITH MANUFACTURER'S RECOMMENDATIONS PRIOR TO CASTING THE COPING.

PROJECT NAME: MIDDLEBURY  
PROJECT NUMBER: RS 0174(8)

FILE NAME: z78f217brall.dwg  
PROJECT LEADER: G.S. GOODRICH  
DESIGNED BY: K.G. KRETSCH  
BRIDGE RAIL DETAILS (2 OF 3)

PLOT DATE: 8/27/2013  
DRAWN BY: J.L. LEMIEUX  
CHECKED BY: S.E. BURBANK  
SHEET 80 OF 104