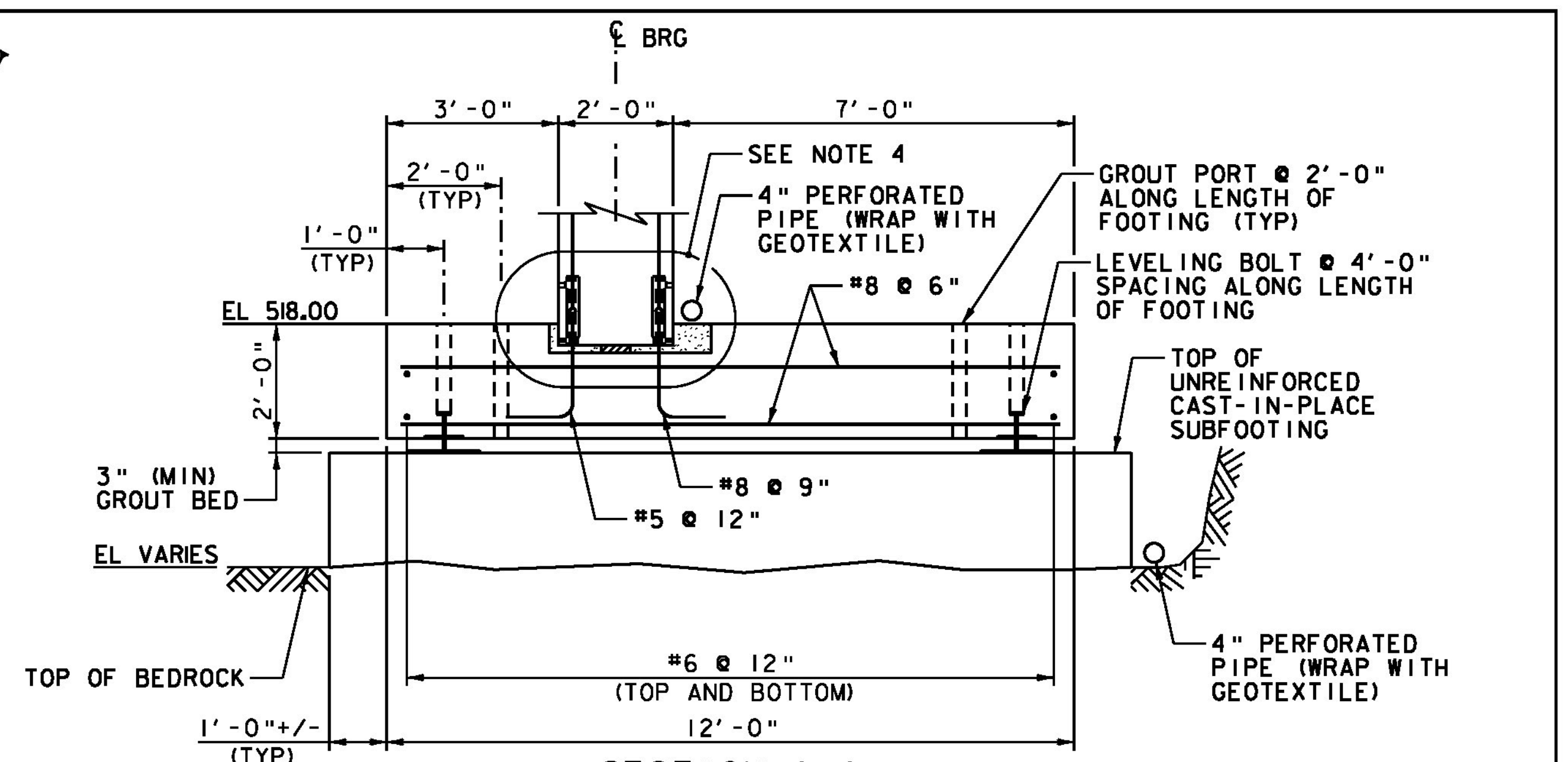
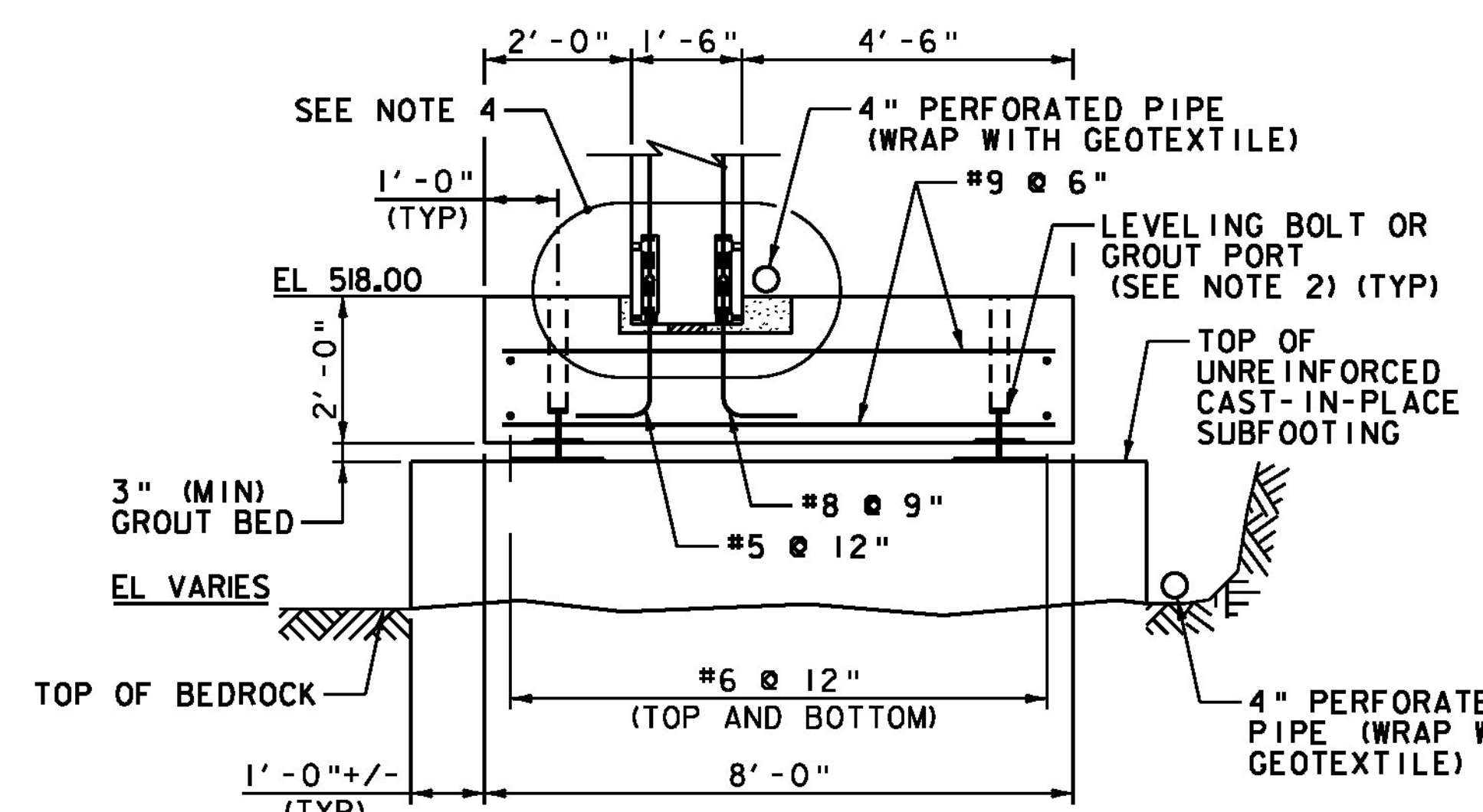


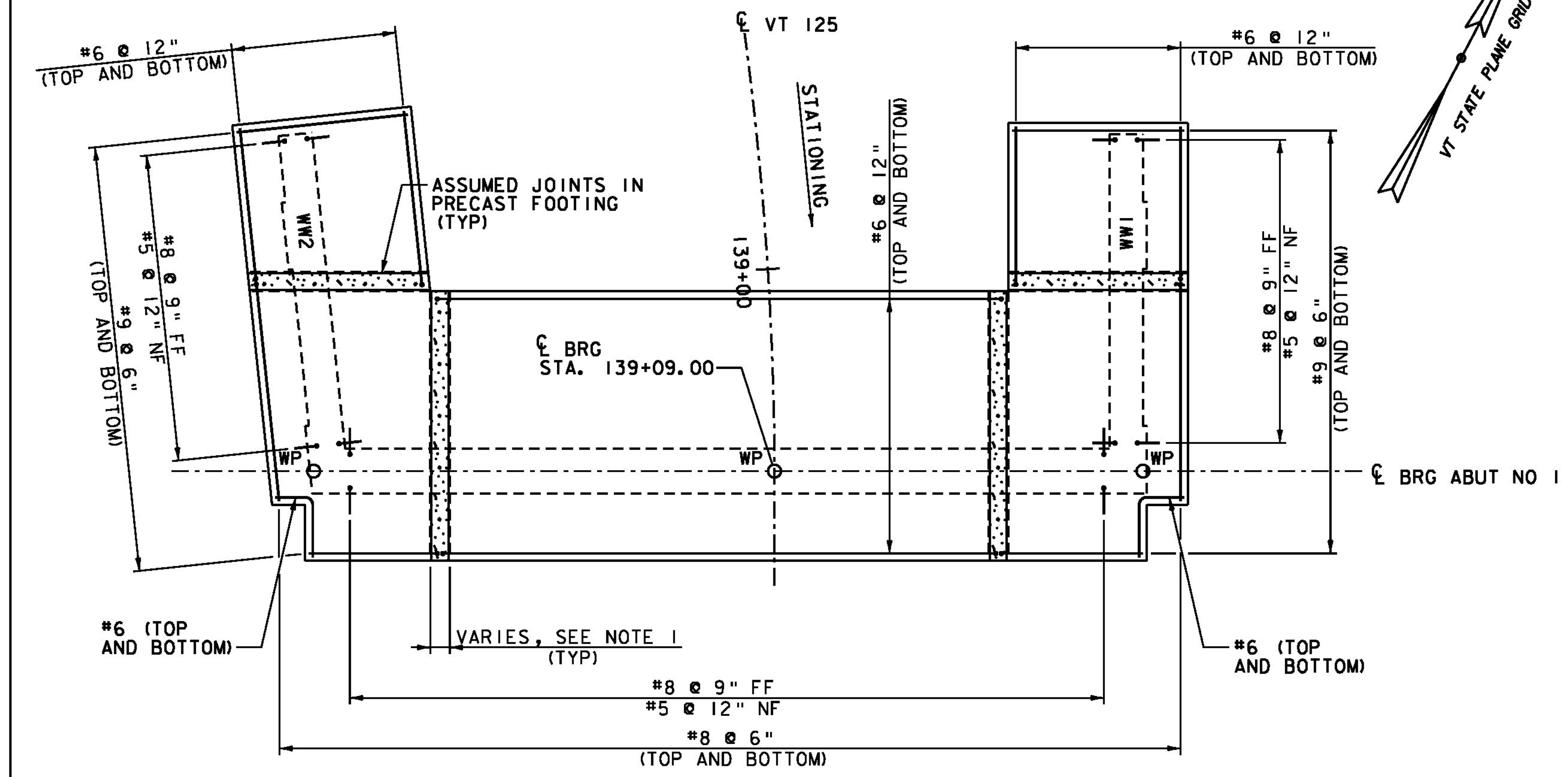
**ABUTMENT NO 1 FOOTING MASONRY PLAN**  
SCALE 1/4" = 1'-0"



**SECTION A-A**  
SCALE 1/2" = 1'-0"



**SECTION B-B**  
SCALE 1/2" = 1'-0"



**ABUTMENT NO 1 FOOTING REINFORCING PLAN**  
SCALE 1/4" = 1'-0"

**NOTE:**  
NF = NEAR FACE  
FF = FAR FACE  
EF = EACH FACE  
▲ = CUT TO FIT IN FIELD  
3" CLEAR, UNLESS OTHERWISE SPECIFIED ON THE PLANS.  
2'-2" BAR LAP UNLESS OTHERWISE SPECIFIED ON THE PLANS.

- NOTES:**
1. LENGTH OF PRECAST FOOTING SECTIONS AND LENGTHS OF CAST-IN-PLACE SECTIONS TO BE BASED ON SHIPPING WEIGHT AND SIZE REQUIREMENTS. THE PRECAST SECTIONS SHALL BE ADEQUATE TO SUPPORT THE DEAD WEIGHT OF THE ABUTMENTS. THE CAST-IN-PLACE SECTIONS CAN BE COMPLETED TO SUPPORT THE TOTAL WEIGHT OF STRUCTURE AND LIVE LOAD.
  2. PLACE GROUT PORTS AT 2'-0" ALONG LENGTH OF FOOTING BETWEEN LEVELING BOLTS SPACED AT 4'-0" ALONG LENGTH OF FOOTING.
  3. IF A LEVEL SURFACE OF COMPETENT BEDROCK, A MINIMUM OF 3 INCHES AND A MAXIMUM OF 6 INCHES BELOW BOTTOM OF PRECAST FOOTING, CAN BE PREPARED AND APPROVED BY THE VTRANS GEOLOGIST, A CAST-IN-PLACE UNREINFORCED CONCRETE SUBFOOTING IS NOT REQUIRED. IN THIS CASE, A THREE INCH MINIMUM GROUT BED SHALL BE PLACED BETWEEN THE PRECAST FOOTING AND THE COMPETENT BEDROCK SURFACE.
  4. SEE STEM TO FOOTING CONNECTION DETAIL ON ABUTMENT NO 1 PLAN AND ELEVATION SHEET.
  5. SEE ABUTMENT NO 2 FOOTING SHEET FOR CAST-IN-PLACE FOOTING CLOSURE DETAIL.

PROJECT NAME:	MIDDLEBURY
PROJECT NUMBER:	RS 0174(8)
FILE NAME:	z78f217sub.dgn
PROJECT LEADER:	M.A. COLGAN
DESIGNED BY:	K.G. KRETSCH
ABUTMENT NO 1 FOOTING	
PLOT DATE:	8/27/2013
DRAWN BY:	K.D. WENTWORTH
CHECKED BY:	G.S. GOODRICH
SHEET	59 OF 104

