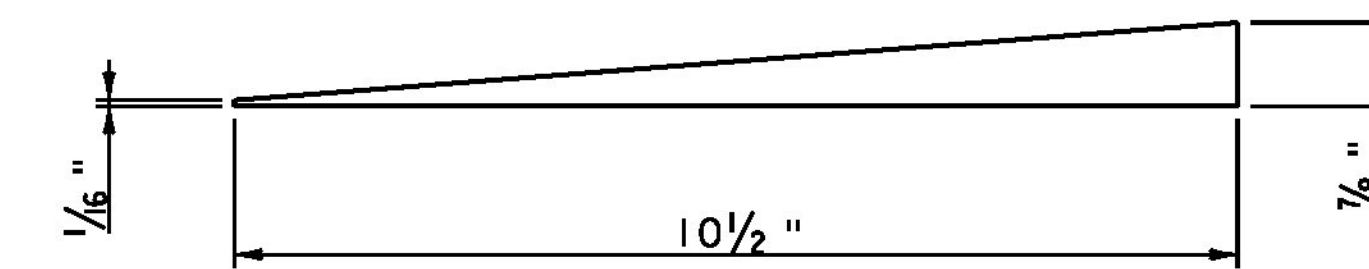


- * 2 - 1/2" INTERIOR ELASTOMER LAYERS
- 2 - 1/4" EXTERIOR ELASTOMER LAYERS
- 2 - 1/16" STEEL REINFORCING PLATES
- 1 - TAPERED TOP REINFORCING PLATE

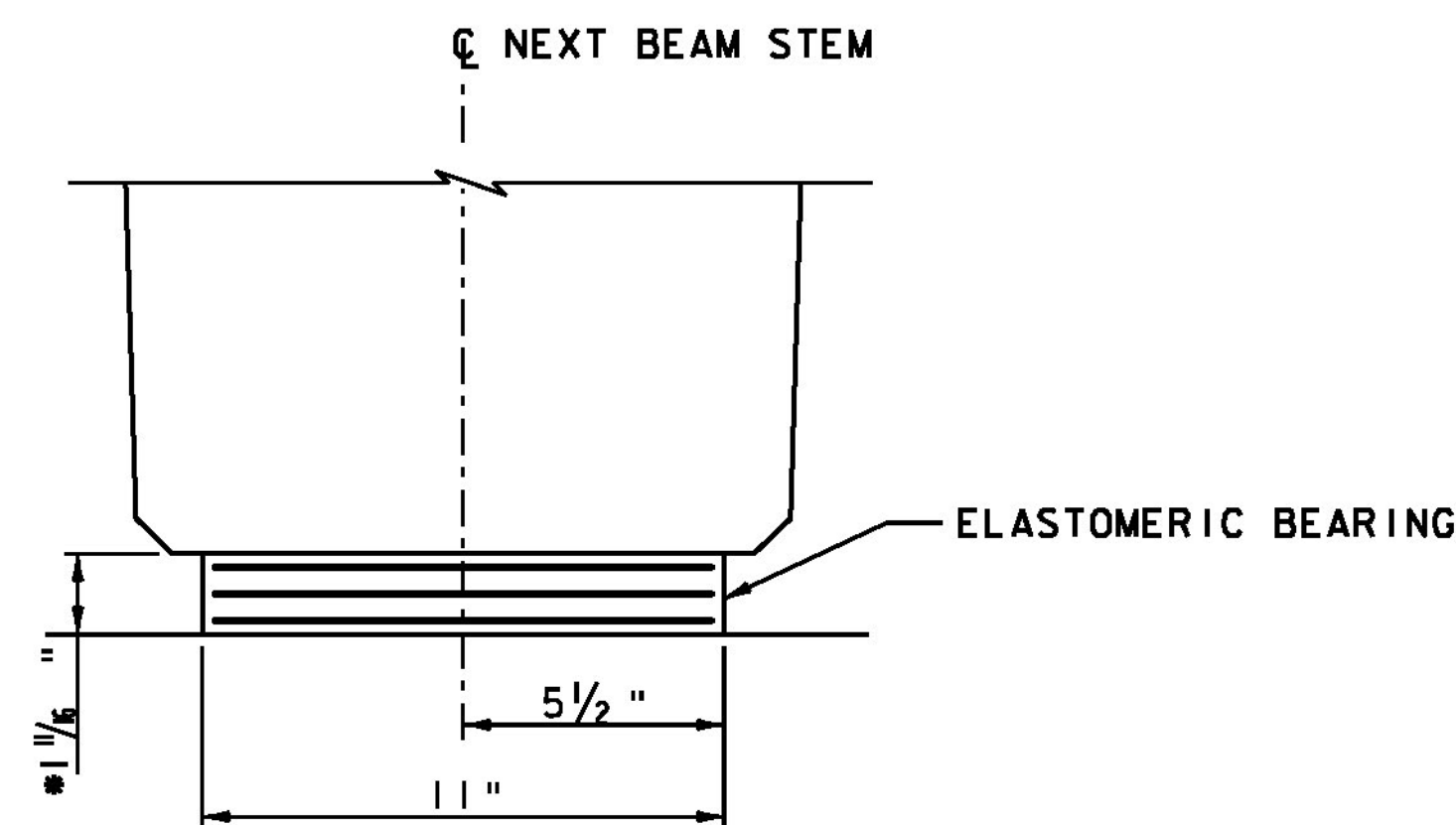
ELASTOMERIC BEARING (EXPANSION)
SCALE 3" = 1'-0"

BEARING NOTES:

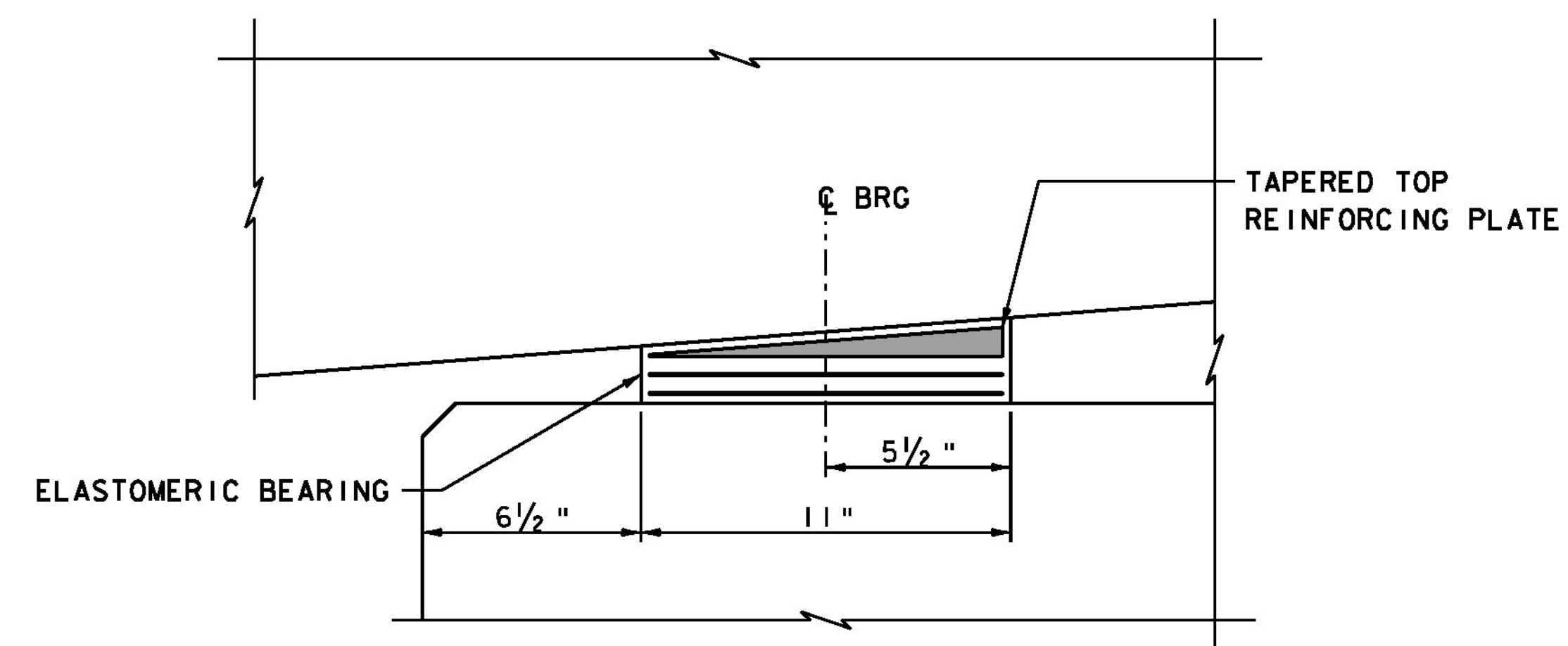
1. BEARINGS SHALL CONFORM TO THE APPLICABLE SUBSECTIONS OF SECTIONS 531 AND 731.
2. ALL REINFORCEMENT BETWEEN LAYERS OF ELASTOMER SHALL BE STEEL MEETING THE REQUIREMENTS OF SUBSECTION 714.02. ALL INTERNAL STEEL PLATES SHALL BE SAND BLASTED AND FREE OF COATINGS, RUST, AND MILL SCALE. THE PLATES SHALL BE FREE OF SHARP EDGES AND BURRS.
3. STEEL REINFORCED ELASTOMERIC BEARINGS SHALL HAVE A MINIMUM 1/8" EDGE SEAL OF ELASTOMER INTEGRAL WITH BEARING OVER ALL INTERNAL PLATES.
4. THE ELASTOMER SHALL BE GRADE 60 SHORE A DUROMETER.
5. THE ELASTOMER SHALL MEET THE REQUIREMENTS OF LOW TEMPERATURE ZONE D, GRADE 4.
6. THE CONTRACTOR IS ADVISED TO HAVE A MINIMUM OF 16 - 1/4"x12 1/2"x12 1/2" GALVANIZED STEEL SHIMS AVAILABLE FOR USE FOR ELEVATION ADJUSTMENTS UPON THE SETTING OF THE SUPERSTRUCTURE UNITS. THE SHIMS SHALL BE FABRICATED ACCORDING TO SECTION 531 AND SHALL BE INCLUDED UNDER ITEM 531.17, "BEARING DEVICE ASSEMBLY, STEEL REINFORCED ELASTOMERIC PAD".



TAPERED TOP PLATE DETAIL
SCALE 6" = 1'-0"



FRONT ELEVATION



SIDE ELEVATION

ABUTMENT NO 2 - EXPANSION BEARING DETAILS
SCALE 3" = 1'-0"

PROJECT NAME:	MIDDLEBURY
PROJECT NUMBER:	RS 0174(8)
FILE NAME:	z78f217brq.dgn
PROJECT LEADER:	M.A. COLGAN
DESIGNED BY:	K.G. KRETSCH
BEARING DETAILS (2 OF 2)	
PLOT DATE:	8/27/2013
DRAWN BY:	B.J. MASSE
CHECKED BY:	G.S. GOODRICH
SHEET	55 OF 104