

**REMOVING SIGNS**

- STA 136+06, RT
- STA 138+16, LT
- STA 138+26, RT
- STA 138+41, LT (2)
- STA 138+76, LT
- STA 138+82, LT (2)
- STA 139+00, LT
- STA 139+02, RT
- STA 139+63, LT
- STA 139+86, RT
- STA 139+95, LT
- STA 140+16, RT
- STA 140+80, RT (2)
- STA 141+45, RT (2)

**TRAFFIC SIGNS, TYPE A**

- STA 138+16, LT
- STA 138+26, RT
- STA 138+52, LT (2)
- STA 138+82, LT (2)
- STA 138+83, LT
- STA 139+95, LT
- STA 140+16, RT
- STA 140+80, RT (2)
- STA 141+45, RT (2)

**DURABLE 4 INCH WHITE LINE**

- STA 135+90 - STA 138+40, LT
- STA 138+90 - STA 141+90, LT
- STA 135+90 - STA 141+90, RT

**DURABLE 4 INCH YELLOW LINE**

- STA 135+90 - STA 138+45, LT & RT
- STA 138+85 - STA 141+90, LT & RT
- STA 50+23 - STA 50+73, LT & RT

**DURABLE 24 INCH STOP BAR**

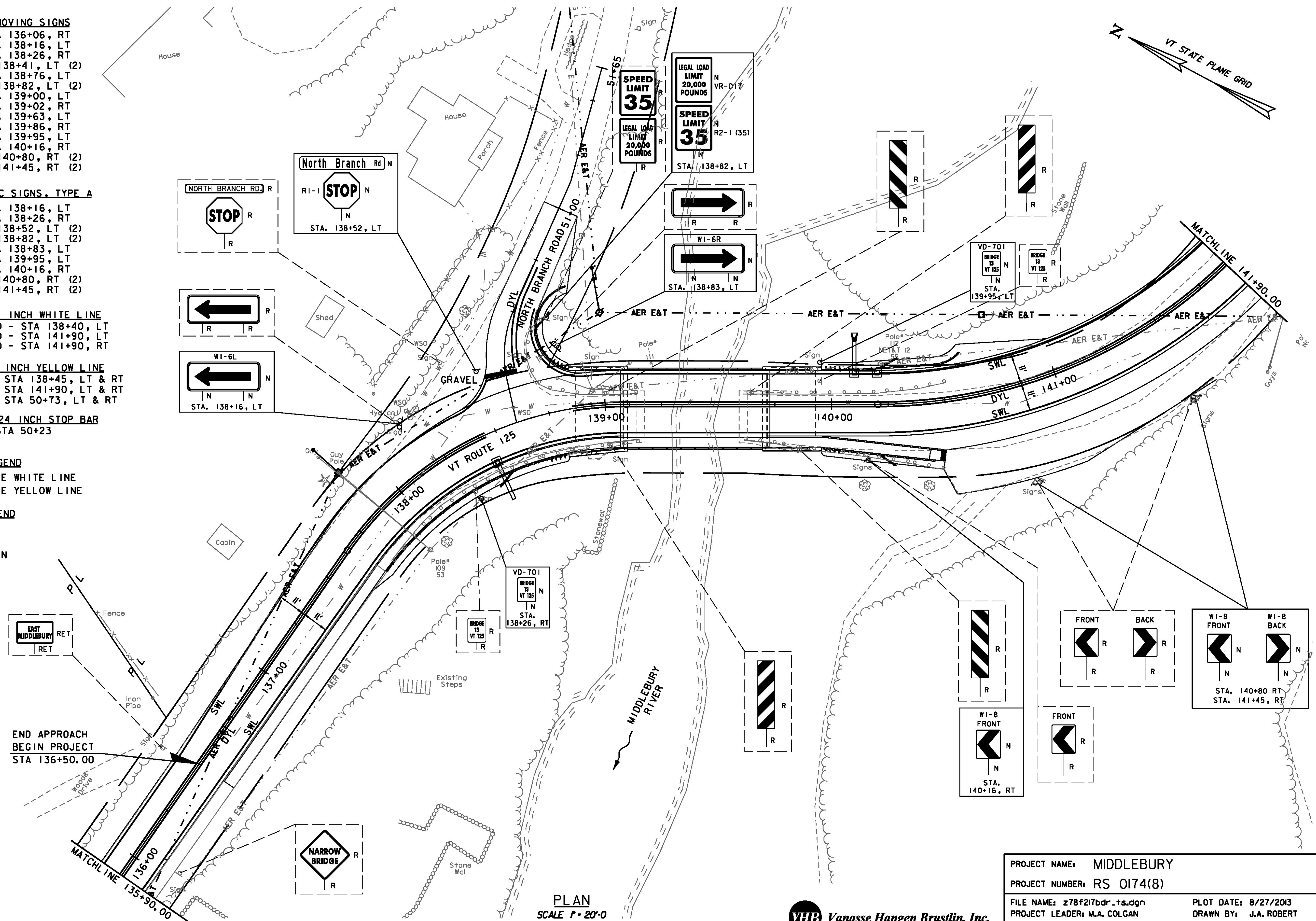
- STA 50+23

**STRIPING LEGEND**

- SWL = SINGLE WHITE LINE
- DYL = DOUBLE YELLOW LINE

**SIGNING LEGEND**

- N = NEW
- R = REMOVE
- RET = RETAIN



PLAN  
SCALE 1" = 20'-0"  
0 20



PROJECT NAME: MIDDLEBURY	PLOT DATE: 8/27/2013
PROJECT NUMBER: RS 0174(8)	DRAWN BY: J.A. ROBERT
FILE NAME: z78f217bdr.ts.dgn	CHECKED BY: M.D. SUENNEN
PROJECT LEADER: M.A. COLGAN	SHEET 35 OF 104
DESIGNED BY: J.A. ROBERT	
TRAFFIC SIGNS & STRIPING (2 OF 3)	