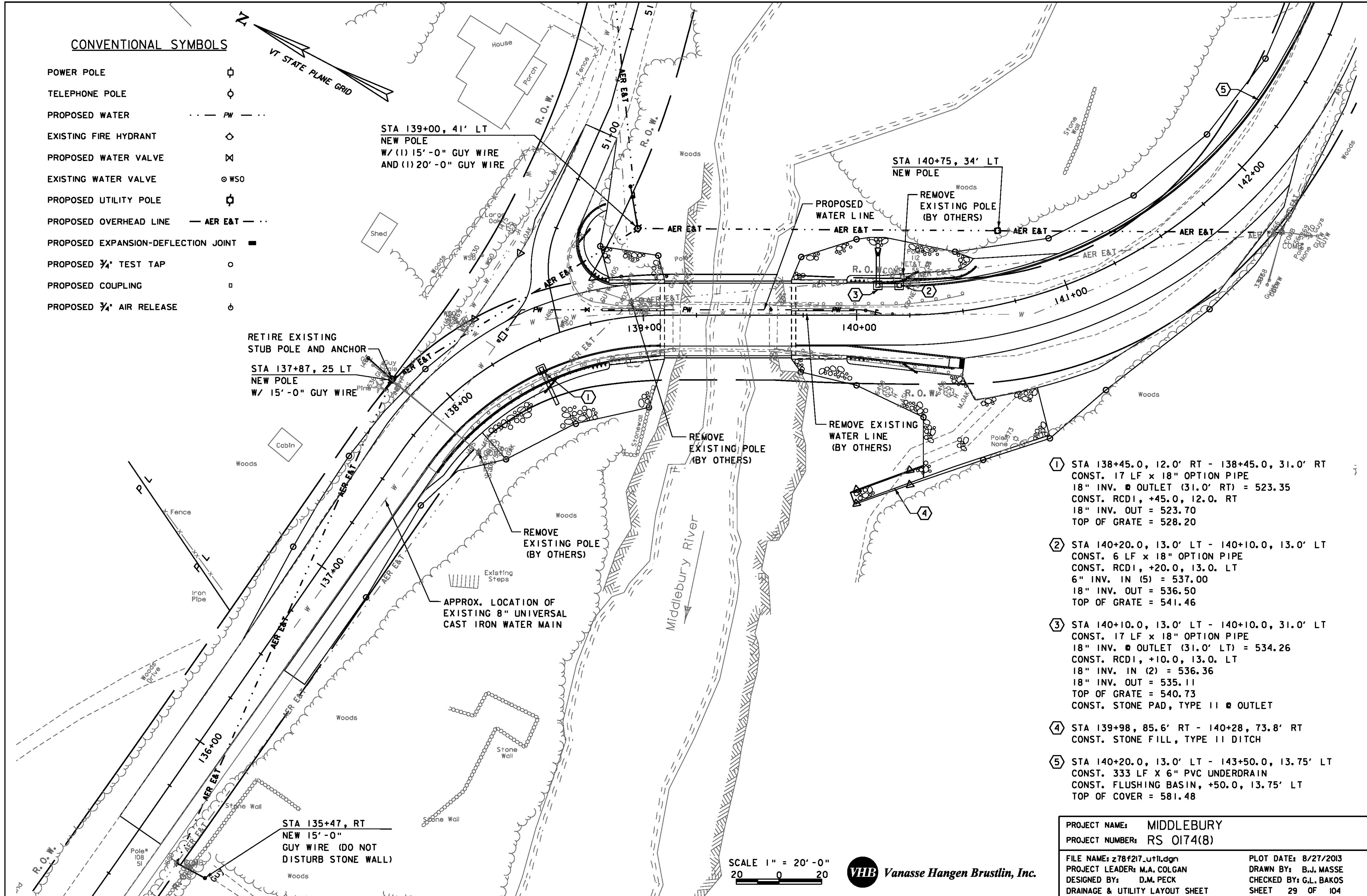
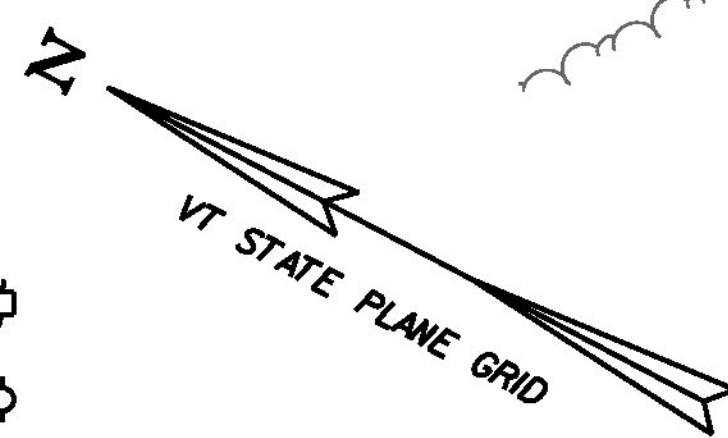


CONVENTIONAL SYMBOLS

- POWER POLE ⊕
- TELEPHONE POLE ⊙
- PROPOSED WATER - - - PW - - -
- EXISTING FIRE HYDRANT ⊙
- PROPOSED WATER VALVE ⊗
- EXISTING WATER VALVE ⊙ WSO
- PROPOSED UTILITY POLE ⊕
- PROPOSED OVERHEAD LINE - AER E&T -
- PROPOSED EXPANSION-DEFLECTION JOINT ■
- PROPOSED 3/4" TEST TAP ○
- PROPOSED COUPLING □
- PROPOSED 3/4" AIR RELEASE ⊕



- ① STA 138+45.0, 12.0' RT - 138+45.0, 31.0' RT
CONST. 17 LF x 18" OPTION PIPE
18" INV. ◉ OUTLET (31.0' RT) = 523.35
CONST. RCD1, +45.0, 12.0. RT
18" INV. OUT = 523.70
TOP OF GRATE = 528.20
- ② STA 140+20.0, 13.0' LT - 140+10.0, 13.0' LT
CONST. 6 LF x 18" OPTION PIPE
CONST. RCD1, +20.0, 13.0. LT
6" INV. IN (5) = 537.00
18" INV. OUT = 536.50
TOP OF GRATE = 541.46
- ③ STA 140+10.0, 13.0' LT - 140+10.0, 31.0' LT
CONST. 17 LF x 18" OPTION PIPE
18" INV. ◉ OUTLET (31.0' LT) = 534.26
CONST. RCD1, +10.0, 13.0. LT
18" INV. IN (2) = 536.36
18" INV. OUT = 535.11
TOP OF GRATE = 540.73
CONST. STONE PAD, TYPE II ◉ OUTLET
- ④ STA 139+98, 85.6' RT - 140+28, 73.8' RT
CONST. STONE FILL, TYPE II DITCH
- ⑤ STA 140+20.0, 13.0' LT - 143+50.0, 13.75' LT
CONST. 333 LF X 6" PVC UNDERDRAIN
CONST. FLUSHING BASIN, +50.0, 13.75' LT
TOP OF COVER = 581.48

SCALE 1" = 20'-0"
20 0 20



PROJECT NAME: MIDDLEBURY	
PROJECT NUMBER: RS 0174(8)	
FILE NAME: z78f217_u11.dgn	PLOT DATE: 8/27/2013
PROJECT LEADER: M.A. COLGAN	DRAWN BY: B.J. MASSE
DESIGNED BY: D.M. PECK	CHECKED BY: G.L. BAKOS
DRAINAGE & UTILITY LAYOUT SHEET	SHEET 29 OF 104