

REMOVAL AND DISPOSAL OF GUARDRAIL

STA 137+65 - STA 139+10, RT
 STA 138+79 - STA 139+10, LT
 STA 139+61 - STA 140+46, RT
 STA 139+61 - STA 140+52, LT

BOX BEAM GUARDRAIL (COATED BLACK)

STA 137+68 - STA 138+41, RT
 STA 138+80, 45.6' LT - STA 138+89, 54.1' LT
 STA 140+28 - STA 140+42, RT
 STA 140+30 - STA 140+60, LT

COLD PLANING, BITUMINOUS PAVEMENT

STA 135+90 - STA 136+00, LT & RT

PORTLAND CEMENT CONCRETE SIDEWALK, 5 INCH

STA 136+50 - STA 139+06.75, RT
 STA 139+72.75 - STA 140+47.55, RT

CAST-IN-PLACE CONCRETE CURB, TYPE B

STA 136+50 - STA 139+06.75, RT
 STA 139+72.75 - STA 140+47.55, RT

ADJUST ELEVATION OF VALVE BOX

SPECIAL PROVISION (WATER MAIN ON BRIDGE) (8")
 STA 138+60.75, LT

SIDEWALK RAMP, TYPE I

STA 140+48, RT

VT 125 POC STA 138+60.00 =
 N. BRANCH RD. POB STA 50+00.00

DETECTABLE WARNING SURFACE

STA 140+47, RT

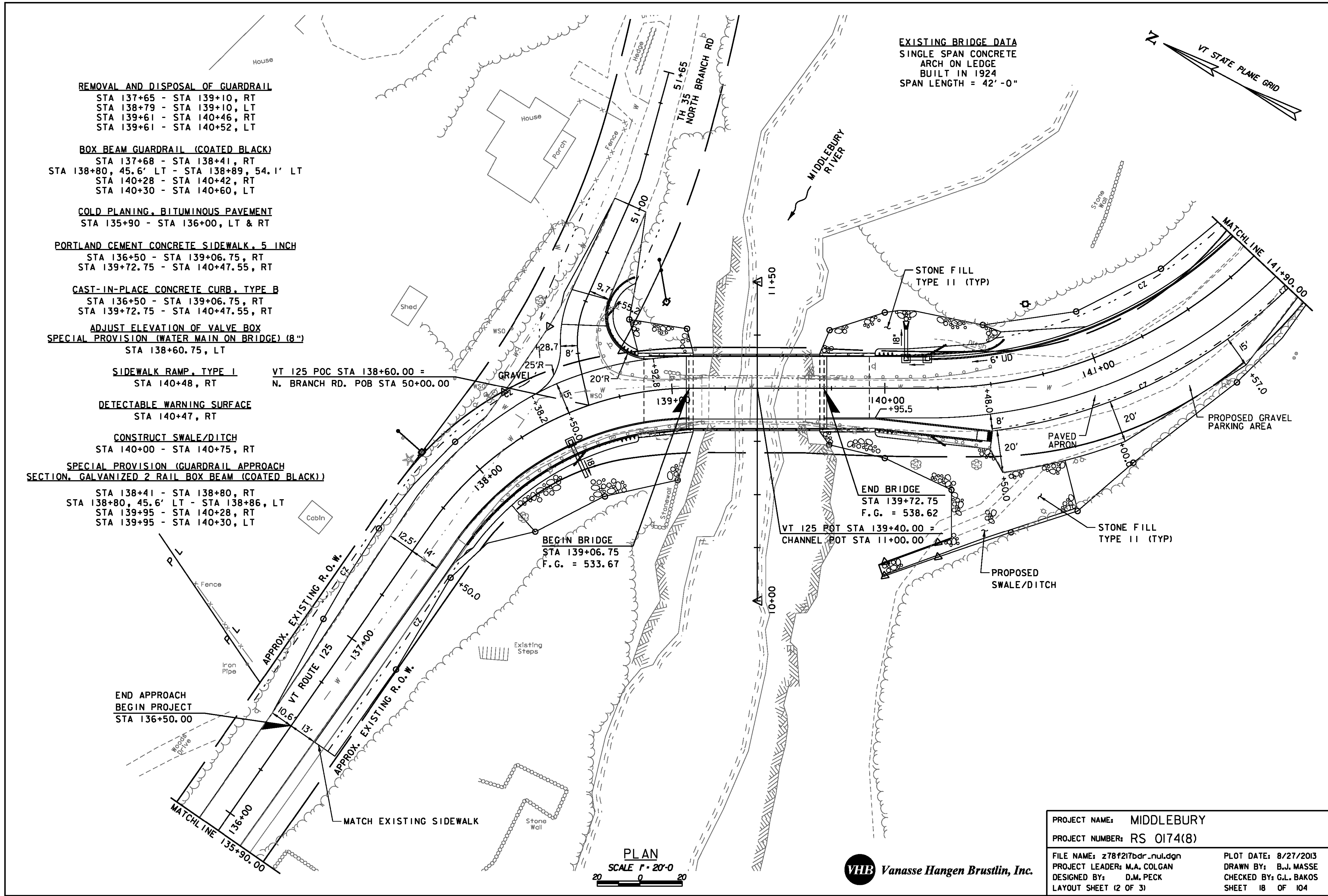
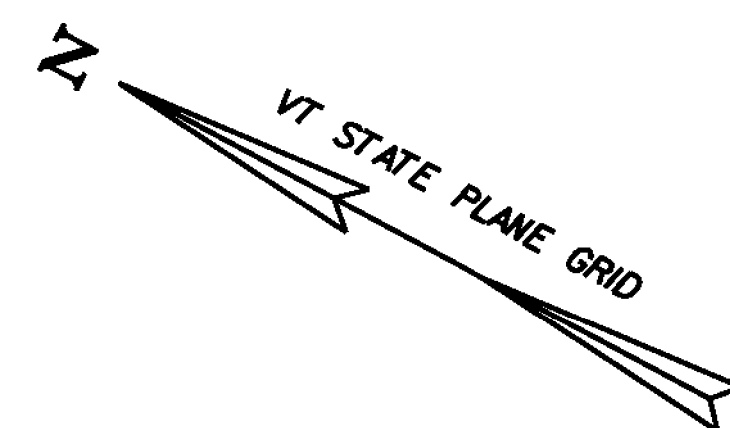
CONSTRUCT SWALE/DITCH

STA 140+00 - STA 140+75, RT

SPECIAL PROVISION (GUARDRAIL APPROACH SECTION, GALVANIZED 2 RAIL BOX BEAM (COATED BLACK))

STA 138+41 - STA 138+80, RT
 STA 138+80, 45.6' LT - STA 138+86, LT
 STA 139+95 - STA 140+28, RT
 STA 139+95 - STA 140+30, LT

EXISTING BRIDGE DATA
 SINGLE SPAN CONCRETE
 ARCH ON LEDGE
 BUILT IN 1924
 SPAN LENGTH = 42'-0"



PLAN
 SCALE 1" = 20'-0"
 20 0 20



PROJECT NAME: MIDDLEBURY	PLOT DATE: 8/27/2013
PROJECT NUMBER: RS 0174(8)	DRAWN BY: B.J. MASSE
FILE NAME: z78f217bdr_nul.dgn	CHECKED BY: G.L. BAKOS
PROJECT LEADER: M.A. COLGAN	SHEET 18 OF 104
DESIGNED BY: D.M. PECK	
LAYOUT SHEET (2 OF 3)	