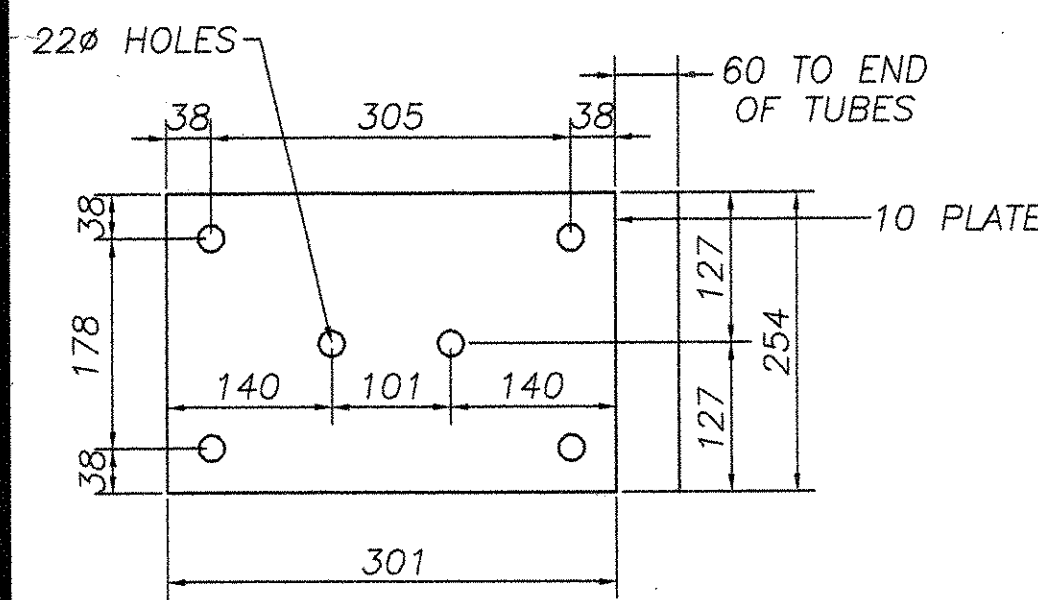
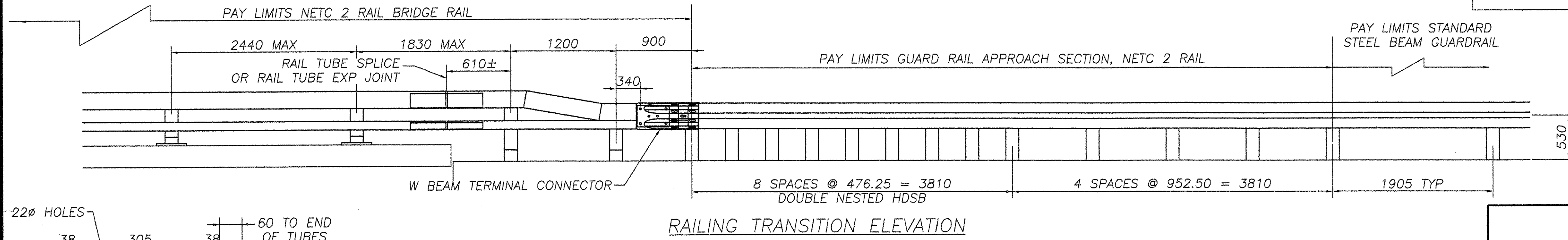
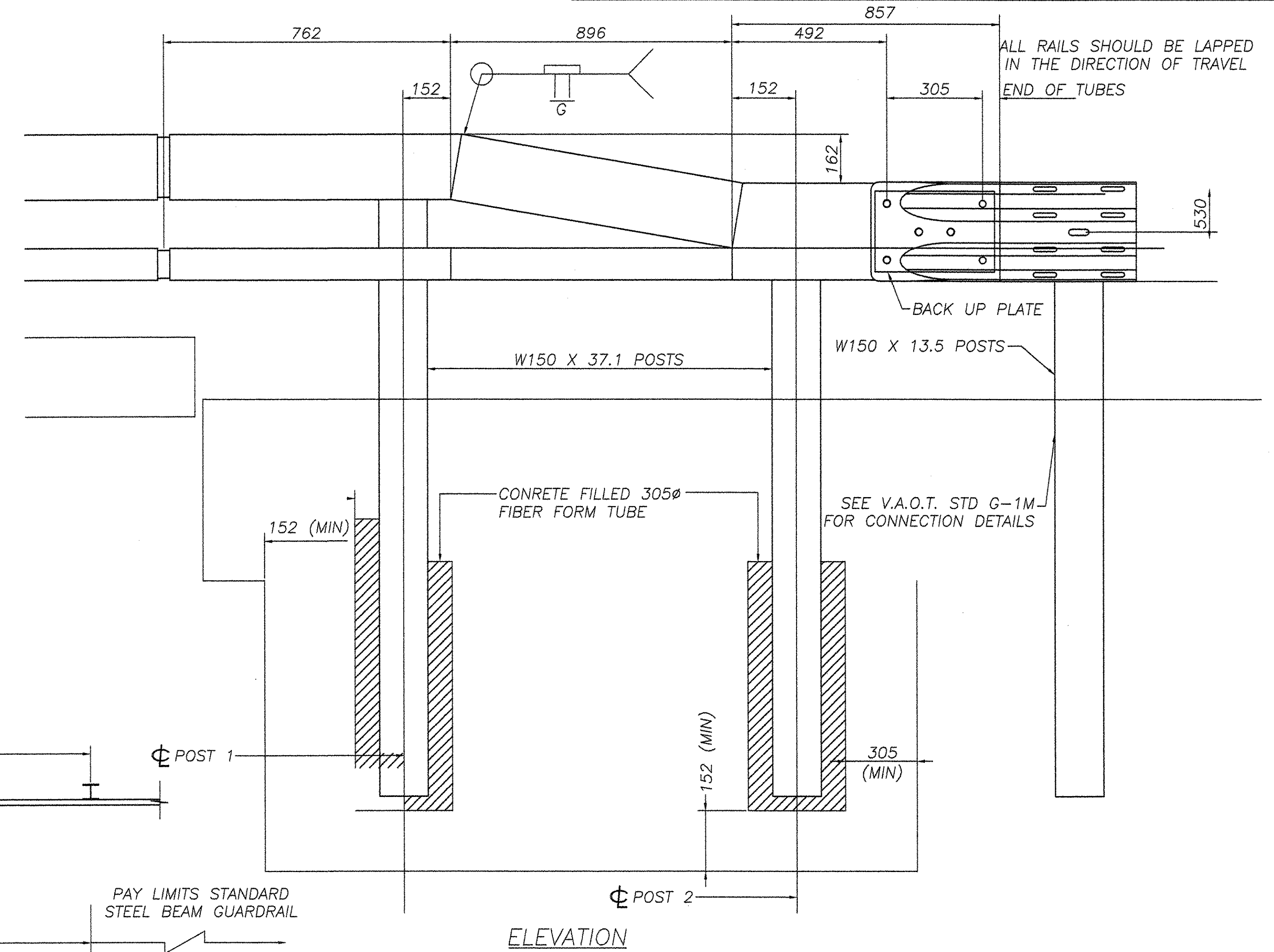
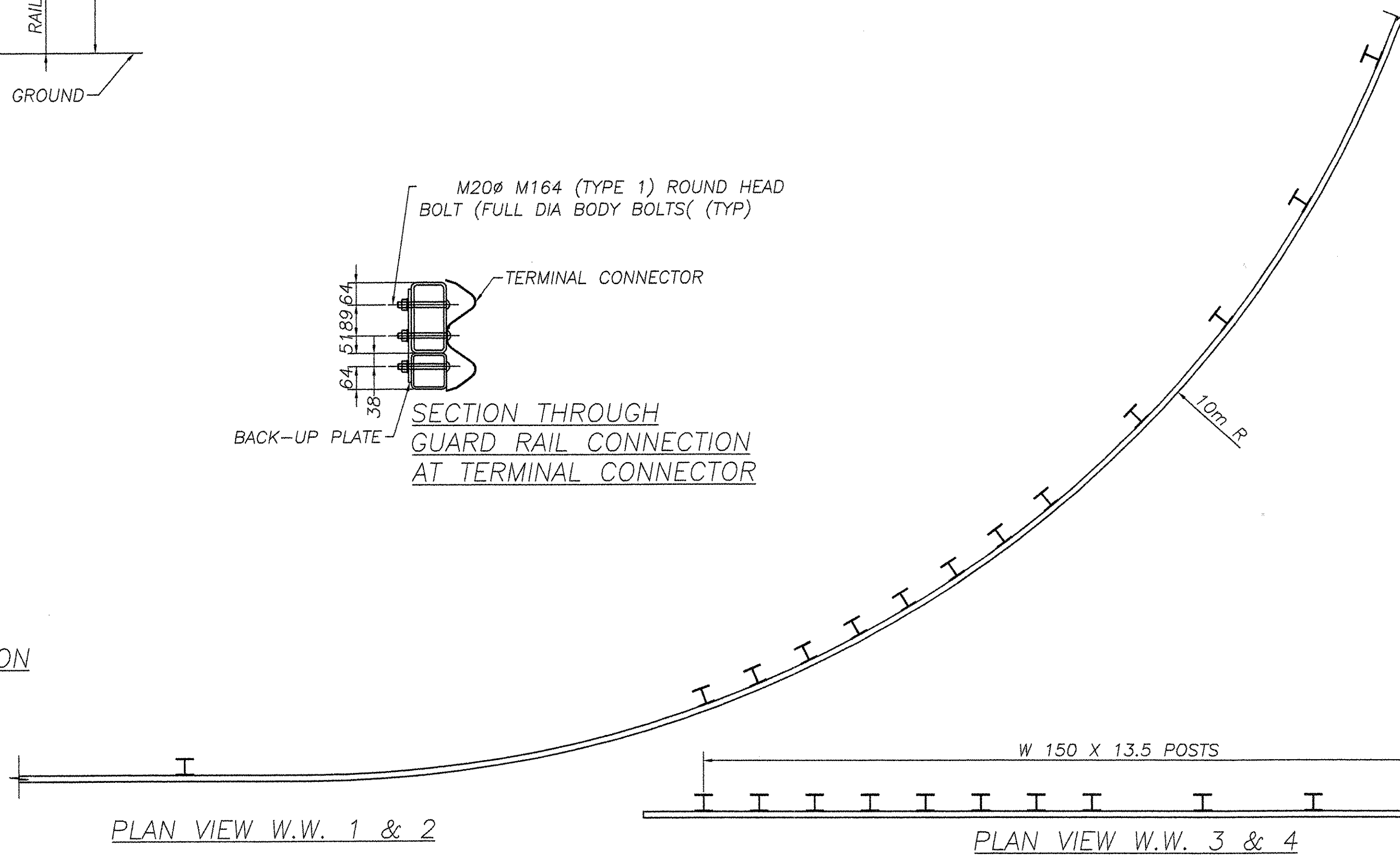
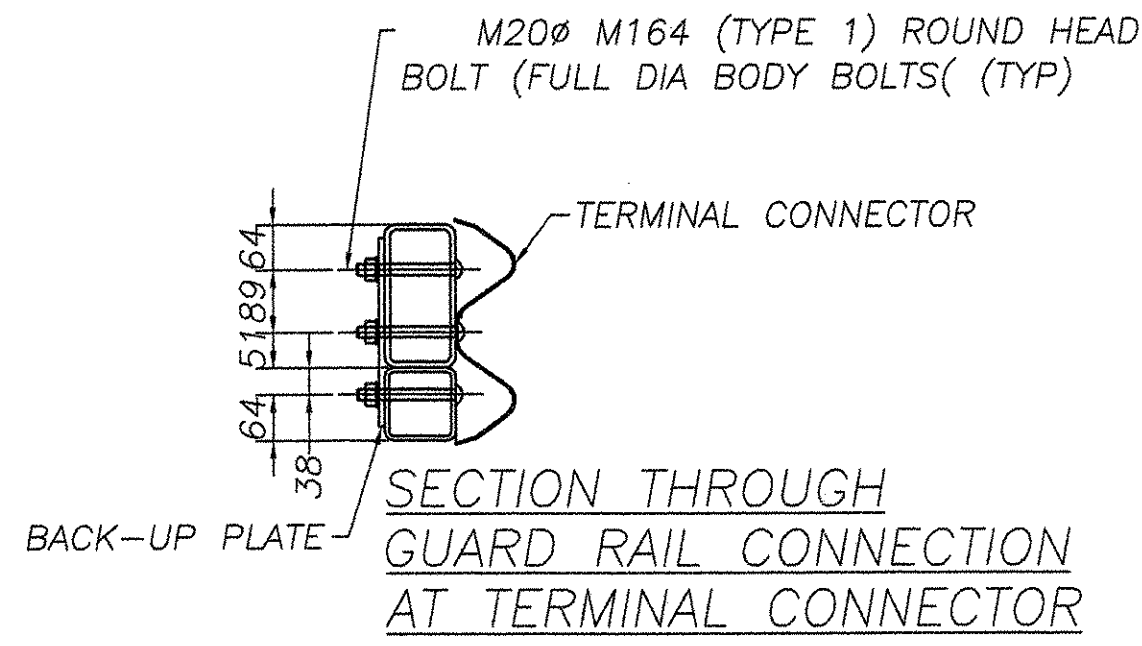
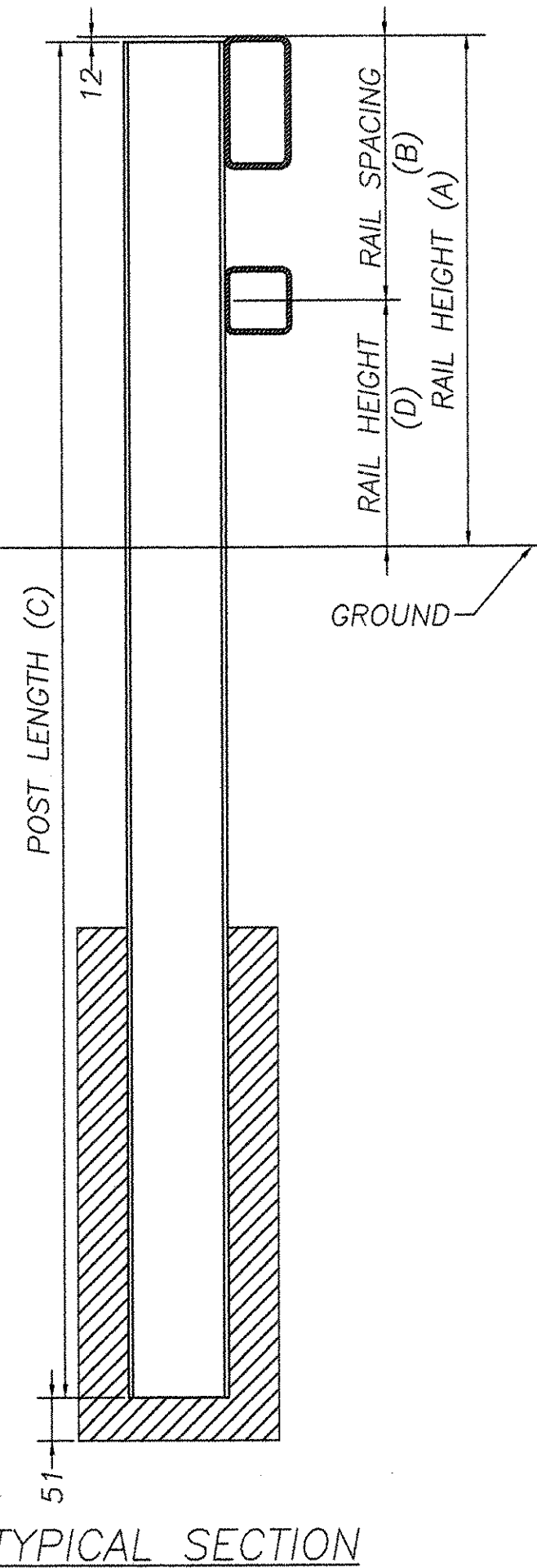


POST NUMBER	RAIL HEIGHT (A)	RAIL SPACING (B)	POST LENGTH (C)	RAIL HEIGHT (D)
1	860	405	2134	455
2	702	254	1956	448

NOTES

1. REFER TO STANDARD DETAIL BRI-97M FOR ADDITIONAL DETAILS, NOTES AND MATERIAL SPECIFICATIONS
2. TO FACILITATE FIELD FIT-UP OF THE TRANSITION RAILING, POSTS SHALL BE SET LOOSELY INTO FIBER FORM TUBES WHILE TRANSITION PARTS ARE BEING ASSEMBLED. POST HOLES SHALL BE BACKFILLED WITH A CONCRETE MIX APPROVED BY THE ENGINEER. PAYMENT FOR COMPONENTS, INCLUDING BACKUP PLATE AND TERMINAL CONNECTOR FOR GUARD RAIL, AUGERING, FIBER FORM TUBES AND CONCRETE, AND INSTALLATION SHALL BE CONSIDERED INCIDENTAL TO BRIDGE RAILING N.E.T.C. 2 RAIL.
3. THE REFLECTORIZED ALUMINUM DELINEATION IS TO BE ERECTED EVERY 9M (OR CLOSEST POST) WITH A M16 BOLT. DELINEATORS SHALL MEET SPECIFICATION REQUIREMENTS FOR ASTM B209 ALLOY 5052-H32
4. REFLECTIVE MATERIAL SHALL MEET REQUIREMENTS OF SUBSECTION 750.08 AND SHALL BE OF ENCAPSULATED LENS SILVER OR AMBER. AMBER IS TO BE INSTALLED ON THE DRIVERS LEFT AND SILVER ON THEIR RIGHT.
5. ON BRIDGES WITH A SIDEWALK, DELINEATORS ARE NOT TO BE INSTALLED ON THE SIDEWALK SIDE OF THE BRIDGE (I.E. DELINEATORS INSTALLED ONLY ON THE CURB SIDE AND ON THE APPROACH ON THE CURB SIDE). PAYMENT SHALL BE SUBSIDIARY TO ALL OTHER ITEMS.
6. ALL APPROACH RAIL SPLICES SHALL BE LAPPED IN THE DIRECTION OF TRAFFIC FLOW.
7. SEE STANDARD G-1dM FOR ADDITIONAL INFORMATION.

BILL OF MATERIAL (ITEM 621.72)				
Qty.	Description	Size/Shape	length/qty. per unit	Material
48	GUIDE RAIL POST 1.835M OAH			
48	POST UPRIGHT	W150 x 13.5	1830	A36M
48	OFFSET BLOCK			
48	WOOD BLOCK	150x200x360		TIMBER
12	GUARD RAIL			
4	STANDARD W BEAM GUARDRAIL	3.810M/476.25		M180 B2
4	STANDARD W BEAM GUARDRAIL SHOP CURVE TO 10mR CONVEX	3.810M/476.25		M180 B2
2	STANDARD W BEAM GUARDRAIL	3.810M/952.5		M180 B2
2	STANDARD W BEAM GUARDRAIL SHOP CURVE TO 10mR CONVEX	3.810M/952.5		M180 B2
64	SPLICE BOLTS	M16	35	A307
112	RECESSED NUT	M16		A563
48	POST BOLTS	M16	255	A307



ALL DIMENSIONS SHOWN ARE IN MM UNLESS OTHERWISE NOTED



REVISIONS		
No.	Remarks	Date
0	Initial submittal	1-13-05

RECEIVED
 OK'D BY: [Signature]
 JAN 20 2005
 RESUBMIT APPROVED [Signature]
 BY: [Signature] DATE: 2/11/05

HIGHWAY SAFETY CORP.
 GLASTONBURY, CT

ITEM 671.72 NETC 2 RAIL BRIDGE RAIL
 TOWN OF JAMAICA
 COUNTY OF WINDHAM
 PROJECT AC BR F 013-1(8)
 VT. ROUTE 100 OVER WEST RIVER

GENERAL CONTRACTOR: F.R. LAFAYETTE, INC.
 DRAWN: C CRAMER
 CHECKED: [Signature]
 DATE: 12-27-04
 SCALE: None
 HSC REFERENCE NO.: 1488
 SIZE: D REVISION: 0
 SHEET NO.: 4 of 4