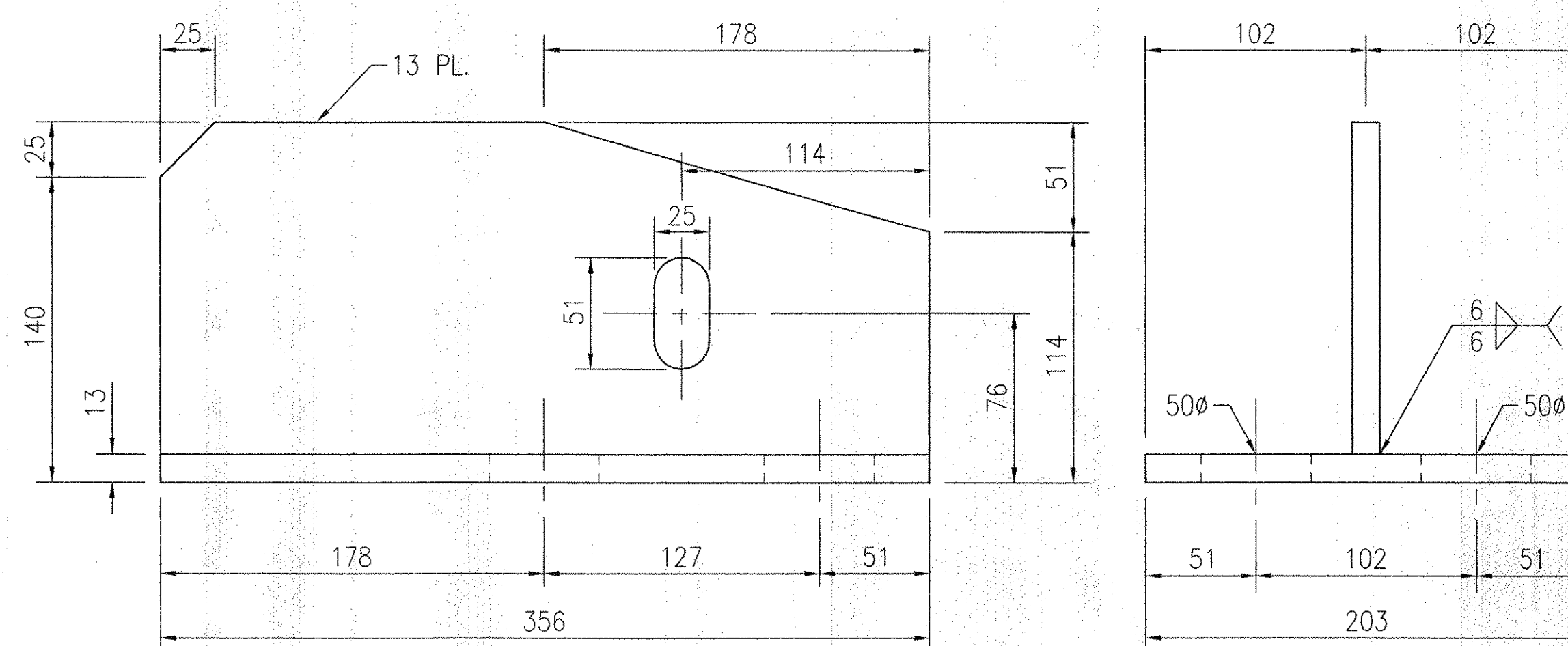


TIE DOWN - TD1



TIE DOWN - TD2

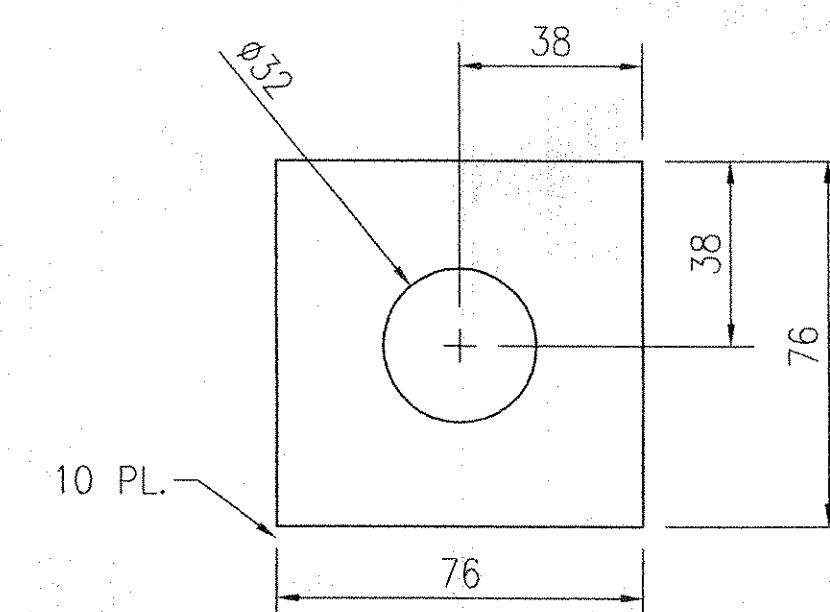
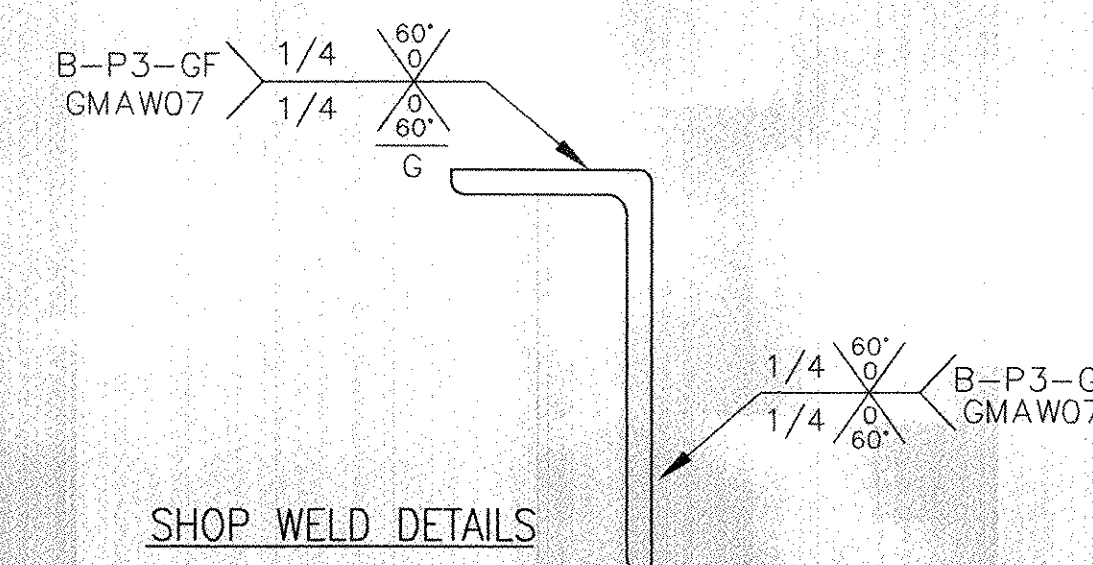


PLATE WASHER - PW1



SHOP WELD DETAILS

MATERIAL SPECIFICATIONS

ALL STEEL MATERIAL is made in accordance with ASTM A-36 (DOMESTIC).

PREFORMED FABRIC MTRL. FOR DRAINAGE TROUGHS PER STANDARD SPECIFICATION SECTION 707.07

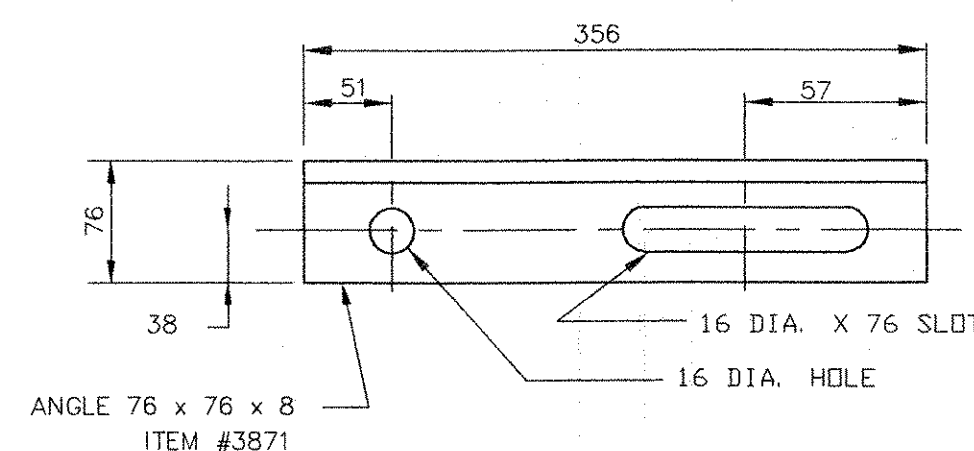
PHYSICAL PROPERTIES	SPEC. LIMITS
Min. Mass (weight) per unit area of laminate, kg/m ² (lbs/ft ²)	4.15 (0.85)
Min. thickness, mm (in)	4.0 (5/32)
Min. Ultimate Tensile Strength of laminate, kN/m (lbs/in) of width	210 (1200)
Max Elongation at ultimate tensile	30%
Max Elongation at 10% of ultimate tensile	3%

CONCRETE ANCHOR STUDS- Studs shall be ASTM - A108.

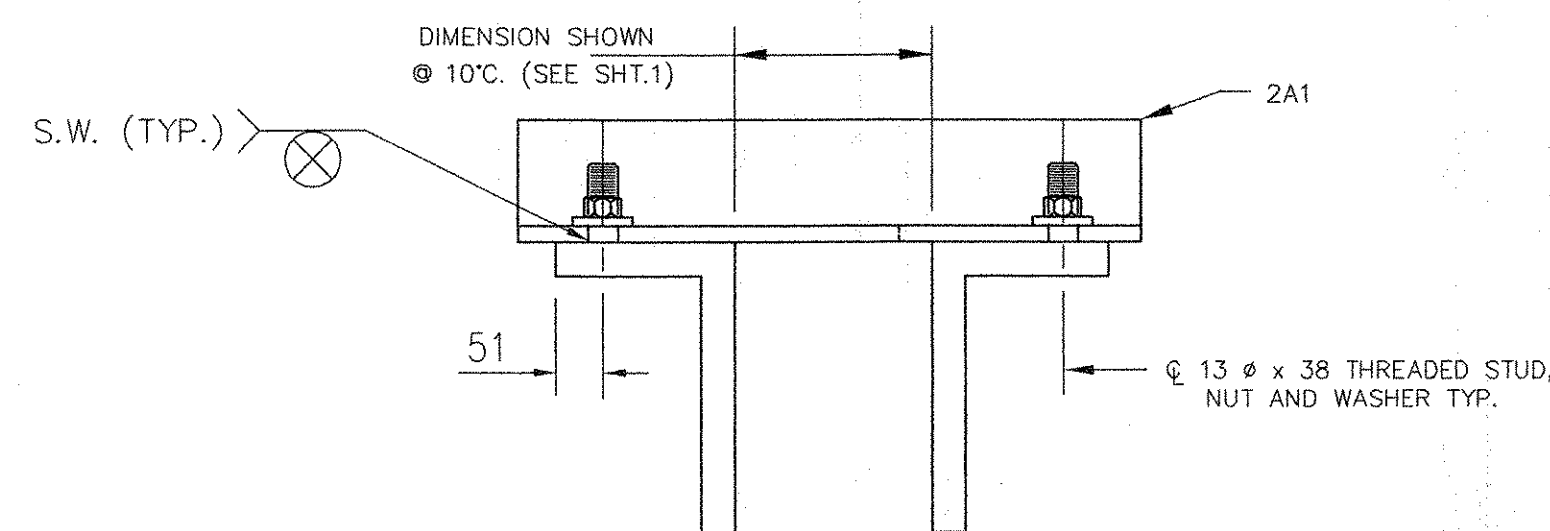
RECEIVED
 OK'D BY: *[Signature]*
 AUG 24 2005
 RESUBMIT: _____ APPROVED: _____
 BY: _____ DATE: 4-2-2005

INSTALLATION PROCEDURE

- STEP 1. BLOCKOUT-Blockout in the channel will be constructed to dimensions shown in section A-A and as directed by the field engineer. Cut expansion joint to required length (if necessary) and touch up damaged galvanized areas.
- STEP 2. Place expansion joint over centerline of open joint and adjust to proper grade and elevation.
- STEP 3. Check width of open joint and make final adjustments if necessary. (as directed by Engineer). Complete field splice (if required).
- STEP 4. Tie joint to blockout reinforcing or formwork.
- STEP 5. Pour concrete into blockout.
- STEP 6. Contractor shall remove shipping devices after concrete has set, grind smooth, and touch-up any damaged galvanizing.

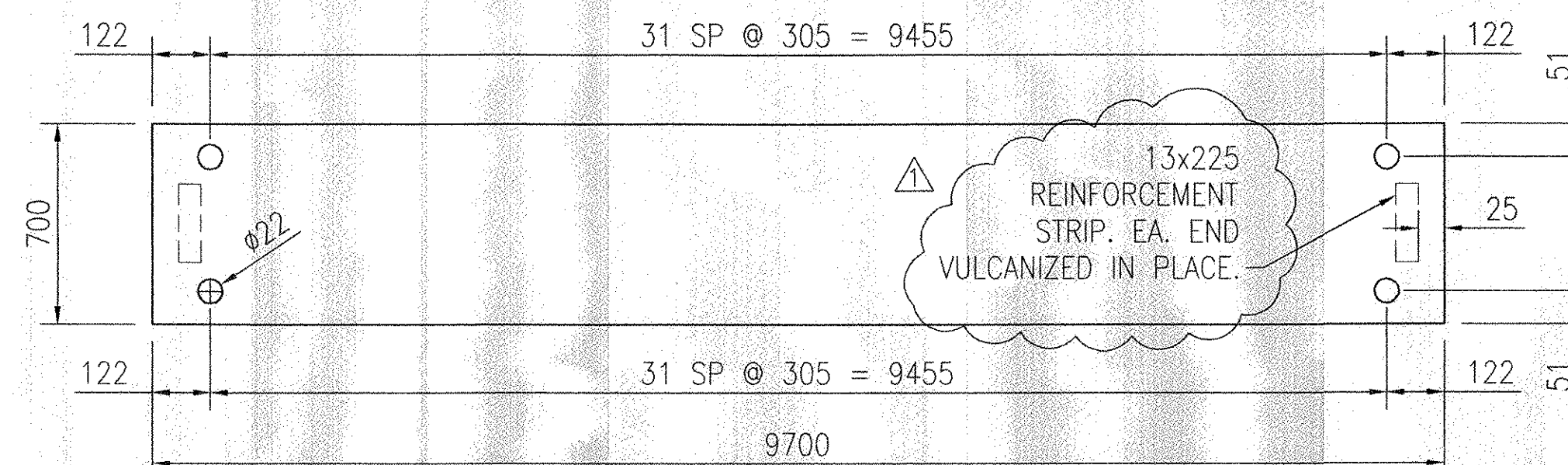


DETAIL - 2A1

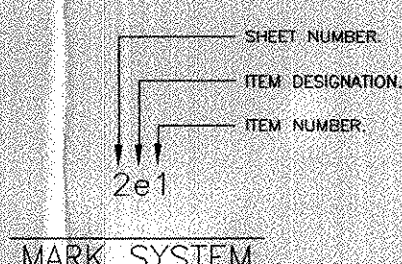


SHIPPING DEVICE

- (1) CONTRACTOR SHALL REMOVE AFTER JOINT IS SET. GRIND WELDS SMOOTH AND TOUCH UP DAMAGED GALVANIZED AREAS.
- (2) SHIPPING ANGLES SHALL BE PLACED 305 FROM MITER LINE AND 1220 O.C. THERE AFTER.



NEOPRENE SHEET



MARK SYSTEM

STATE: VERMONT
 TOWN: JAMAICA
 PROJECT NO.: BRF 013-1 (8)
 STATION: _____ MILE POST: _____
 EXPANSION JOINT TYPE: EMBEDDED
 WBA PRODUCT NO.: EMB102885AA

F:\ENGINEER\WBA Proj\102885-Westover-VT Route 100\100-Drawing\B2350401.dwg, Layout2, 8/18/2005 10:29:22 AM

DRAWING ACTION:
 SUBMITTED FOR APPROVAL

NO.	DESCRIPTION	NAME	DATE
1	REVISED PER APPROVAL COMMENTS	TEB	8/19/05

Information provided herein, including but not limited to, any drawing, design, photograph, graphic, or statement(s) ("Materials") are proprietary and the property of Watson Bowman Acme Corporation ("Company"). Reproduction, translation, or reduction to any electronic medium or machine readable form, in whole or part, is strictly prohibited, except for the express purpose for which it has been furnished, without prior written consent of Company. All Materials contained herein are provided by Company for information purposes only. Company reserves the right to amend or withdraw any information contained in the Materials without notice. All technical or other advice by Company, whether verbal or written, concerning products, or the use of products in specific situations ("Advice") is given by Company and is used at the Users own risk.

DETAILED BY: TEB	DATE: 4/1/05
CHECKED BY: TEB	DATE: 4/1/05
SCALE: NTS	WBA JOB NO.: 102885
SHEET NO.: 2 OF 4	DRAWING NO.: B-23554

PROJECT:
 VT ROUTE 100 OVER THE WEST RIVER
 WABO EXPANSION JOINT DETAILS

207 bi