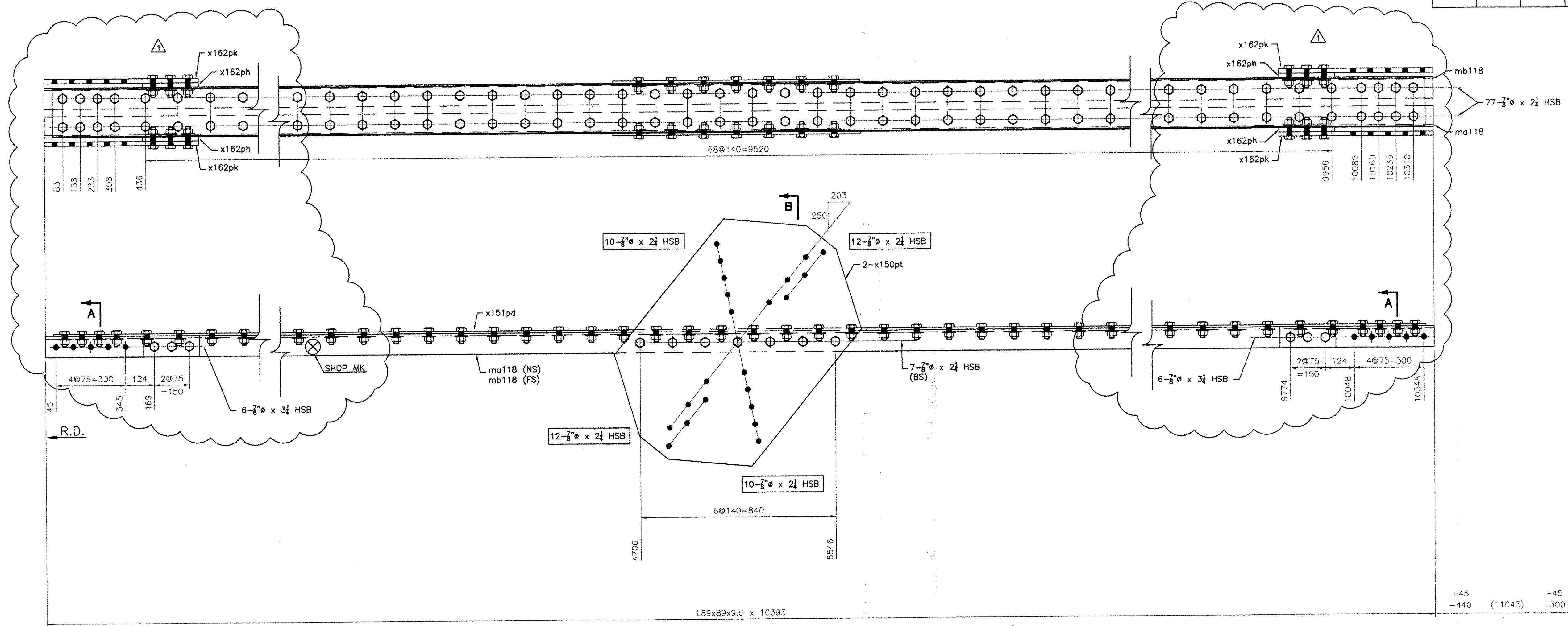


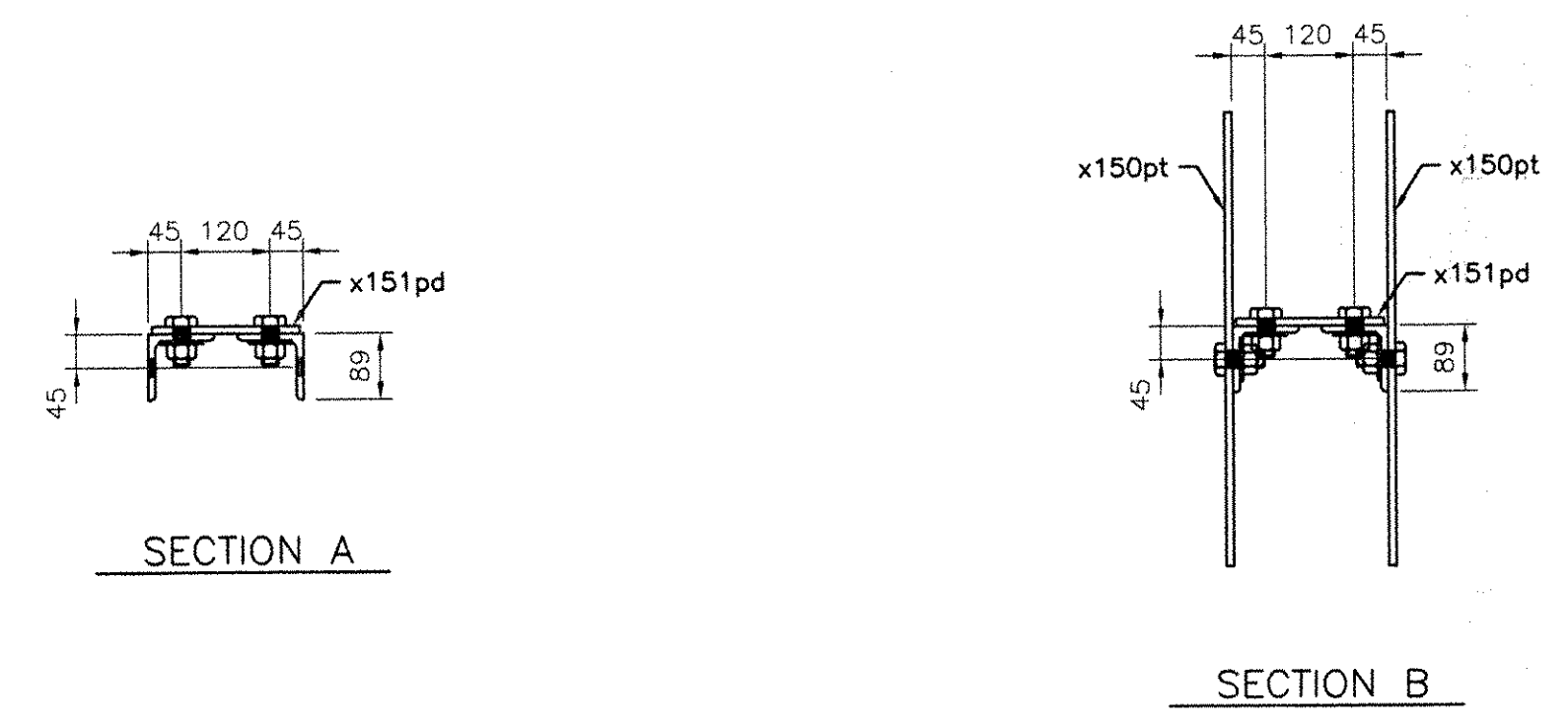
Drawing Number	Revision Number	Ship Mark	Piece Mark	Qty	Type of Material	Size of Material	Grade	Length	Finish	Notes
118		118DB		2	L Angles	89x89x9.5	M270M-GR345	10393	CVN	21
118		118DB	ma118	2	L Angles	89x89x9.5	M270M-GR345	10393	CVN	21
118		118DB	mb118	2	L Angles	89x89x9.5	M270M-GR345	10393	CVN	21
118		118DB	x150pt	4	PL Plate	10x760	M270M-GR345	1150	CVN	72
118		118DB	x151pd	2	PL Plate	10x200	M270M-GR345	10323	CVN	22
118		118DB	x162ph	8	PL Plate	18x90	M270M-GR345	240		
118		118DB	x162pk	8	PL Plate	18x90	M270M-GR345	664		



BOLTS LIST		
QTY	DESCRIPTION	LENGTH
SHOP BOLTS LIST		
336	7/8" HSB	2 1/4
24	7/8" HSB	3 1/4
FIELD BOLTS LIST		
88	7/8" HSB	2 1/4

2 -DIAGONAL BRACE ASSEMBLIES - 118DB

- NOTES:
- 1- GENERAL NOTES: SEE GN101
 - 2- HOLES: 15/16" (24#) (UN)
 - 3- ALL HS BOLTS SHALL BE A325 TYPE 1 GALVANIZED C/W 1 NUT & 1 WASHER (UN)
 - 4- ALL STEEL SHALL BE GALVANIZED, SEE GN101
 - 5- ALL SHOP BOLTS SHALL BE HAND TIGHTEN
 - 6- ALL HOLES SHALL BE "CNC" DRILLED (UN)
 - 7- WIRE-BRUSH PREPARATION 3" OF OPEN HOLES FOR FAYING SURFACES PRIOR TO BOLTING



RECEIVED
 OK'D BY: _____ OK'D BY: *WJM*
 AUG 24 2005
 RESUBMIT: _____ APPROVED: _____
 BY: _____ DATE: 9/23/05

RESERVED FOR STAMPS

REV	DATE	DESCRIPTION	QTY	DATE	ISSUED TO	FOR
8	8/22/05	F.W. Whitcomb				Approval
8	4/8/05	F.W. WHITCOMB CONSTRUCTION				APPROVAL

PROJECT: ROUTE 100 OVER THE WEST RIVER
 LOCATION: TOWN OF JAMAICA
 ENGINEER: CLD CONSULTING ENGINEERS
 CUSTOMER: VERMONT A. O. T.
 DRAWING TITLE: DIAGONAL BRACINGS
 DRAWN BY: YJ 02/23/05 JOB
 CHECKED BY: GG 03/30/05 NUMBER: 5075 SHEET NUMBER: 118

NOTICE
 This drawing shall not be used or reproduced in any manner, nor shall any similar drawings or structures be made therefrom, nor shall the information thereon be used for any purpose other than that for which it is released without the written consent of an officer of EASTERN BRIDGE LLC.

EASTERN BRIDGE LLC
 RURAL RTE 2, BOX 302
 CLAREMONT, NH 03743
 603-542-5202