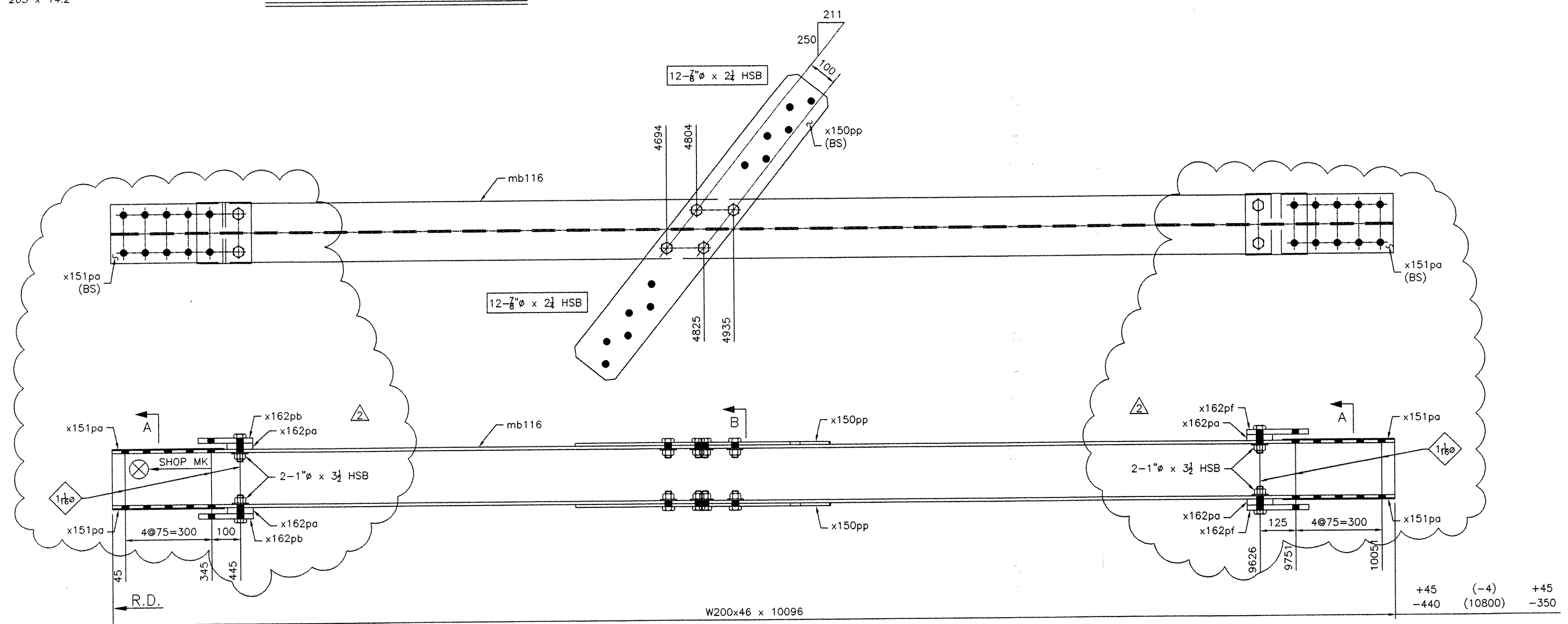


W 210 x 9.1  
F 205 x 14.2

4 -DIAGONAL BRACES - 116DB1



W 203 x 7.2  
F 203 x 11.0

4 -DIAGONAL BRACES ASSEMBLIES - 116DB2

BILL OF MATERIAL

Drawing Number	Revision Number	Ship Mark	Piece Mark	Qty	Type of Material	Size of Material	Grade	Length	Finish	Notes
116		116DB1		4				Total weight:		2377 kg
116		116DB1	ma116	4	W Wide Flng	200x59	M270M-GR345	9435	CVN	19
116		116DB1	x162pb	8	PL Plate	18x190	M270M-GR345	210		
116		116DB1	x162pc	16	PL Plate	18x90	M270M-GR345	210		
116		116DB1	x162pd	8	PL Plate	18x210	M270M-GR345	260		
116		116DB2		4				Total weight:		2181 kg
116		116DB2	mb116	4	W Wide Flng	200x46	M270M-GR345	10096	CVN	20
116		116DB2	x150pp	8	PL Plate	10x180	M270M-GR345	1330	CVN	70
116		116DB2	x151pa	16	PL Plate	3x203	M270M-GR345	390		76
116		116DB2	x162pa	16	PL Plate	21x90	M270M-GR345	210		
116		116DB2	x162pb	8	PL Plate	18x190	M270M-GR345	210		
116		116DB2	x162pf	8	PL Plate	18x210	M270M-GR345	215		

BOLTS LIST

QTY	DESCRIPTION	LENGTH
SHOP BOLTS LIST		
32	7/8\"/>	

- NOTES:
- 1- GENERAL NOTES: SEE GN101
  - 2- HOLES: 15/16\"/>

RECEIVED

OK'D BY: *[Signature]*

AUG 24 2005

RESUBMIT APPROVED: *[Signature]*

BY: DATE 9/23/05

RESERVED FOR STAMPS

REV	DATE	DESCRIPTION	QTY	DATE	ISSUED TO	FOR
8	8/22/05	AS PER REVISED DESIGN				
B	4/8/05	AS PER APPROVAL COMMENTS				

NOTICE

This drawing shall not be used or reproduced in any manner, nor shall any similar drawings or structures be made therefrom, nor shall the information thereon be used for any purpose other than that for which it is released without the written consent of an officer of EASTERN BRIDGE LLC.

**EBL**

**EASTERN BRIDGE LLC**  
RURAL RTE 2, BOX 302  
CLAREMONT, NH 03743  
603-542-5202

PROJECT: ROUTE 100 OVER THE WEST RIVER

LOCATION: TOWN OF JAMAICA

ENGINEER: CLD CONSULTING ENGINEERS

CUSTOMER: VERMONT A. O. T.

DRAWING TITLE: DIAGONAL BRACINGS

DRAWN BY: YT 02/21/05 JOB SHEET

CHECKED BY: GG 03/30/05 NUMBER: 5075 NUMBER: 116