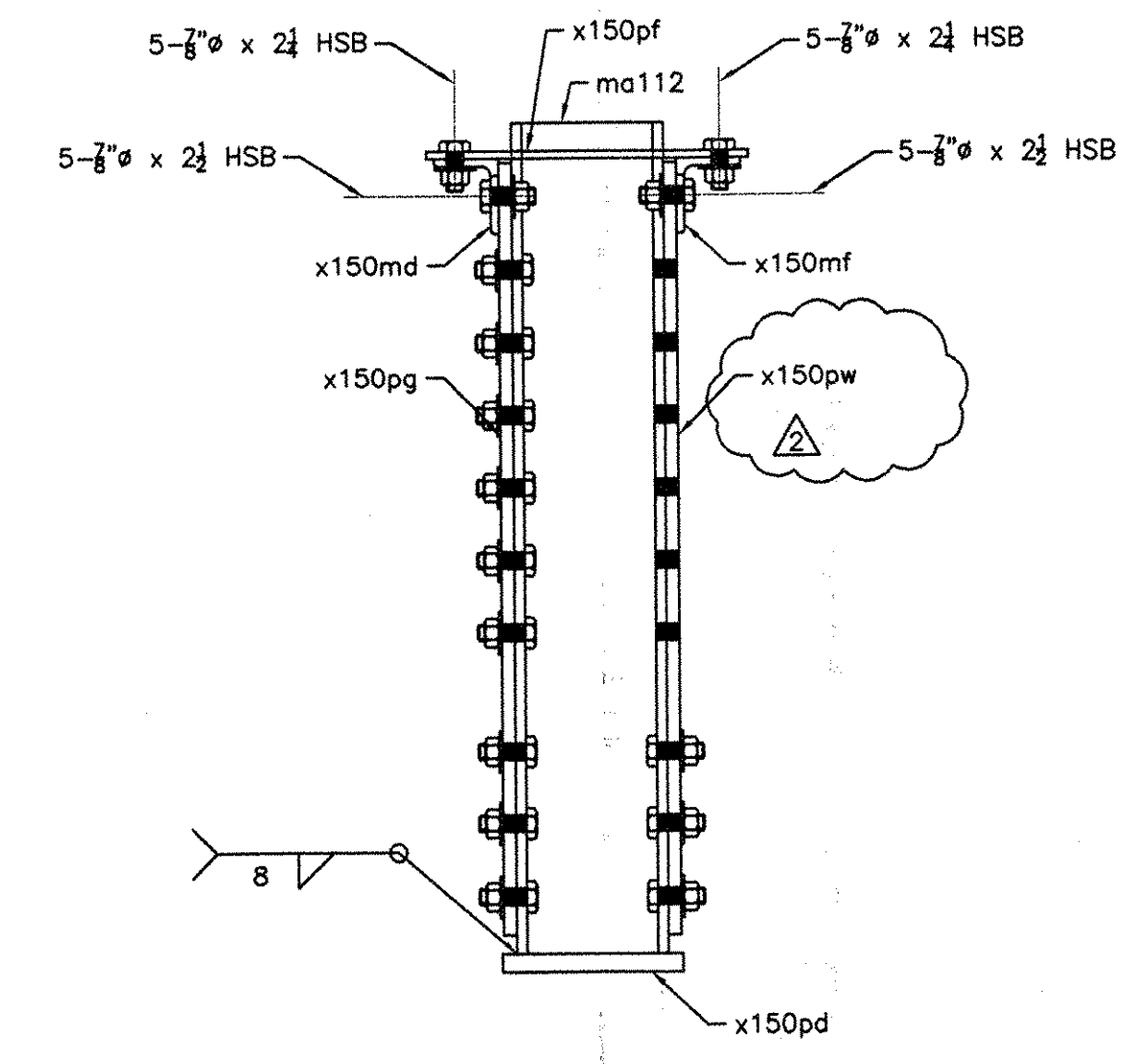
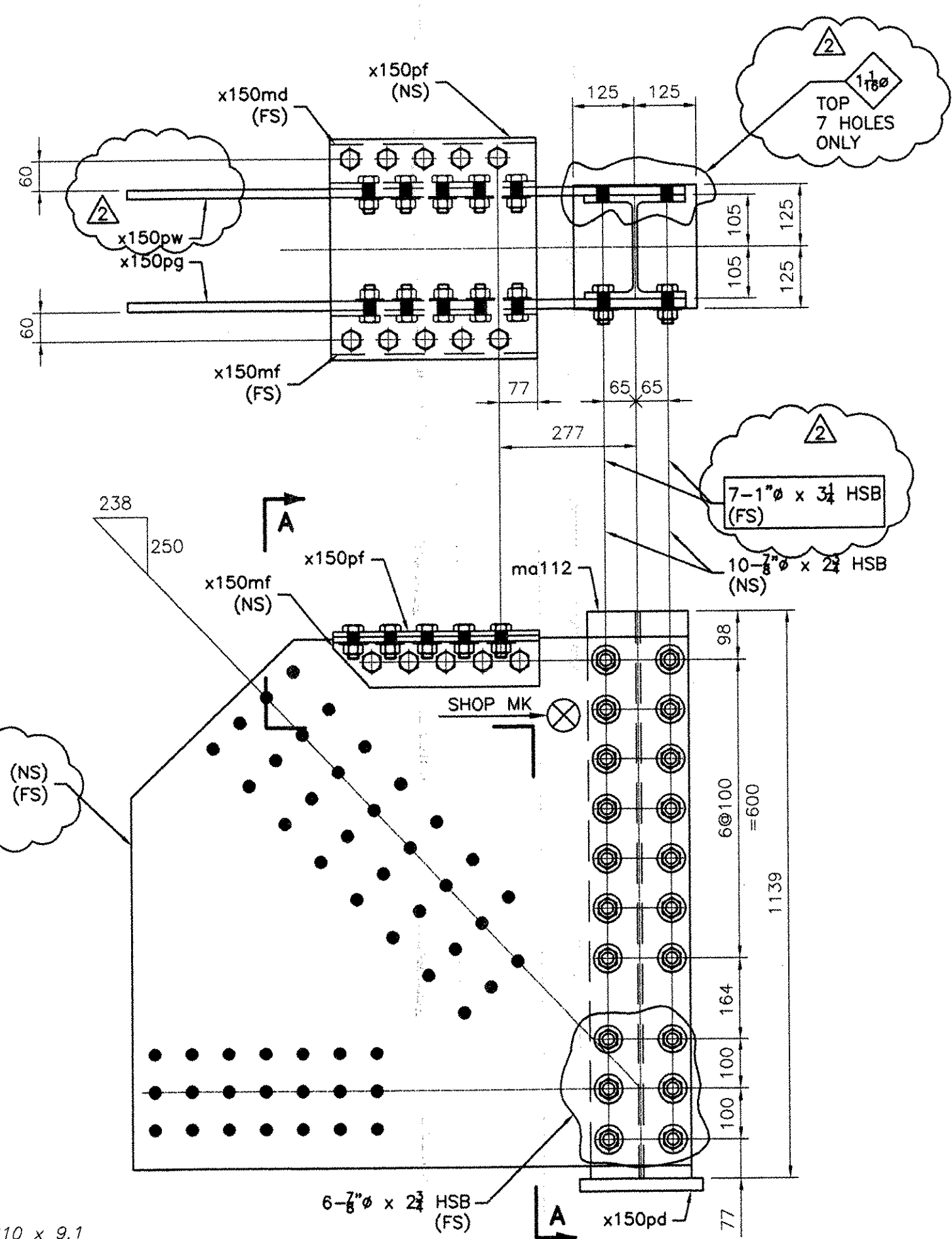


W 210 x 9.1
F 205 x 14.2

2 - VERTICAL BRACE ASSEMBLIES - 112VB1

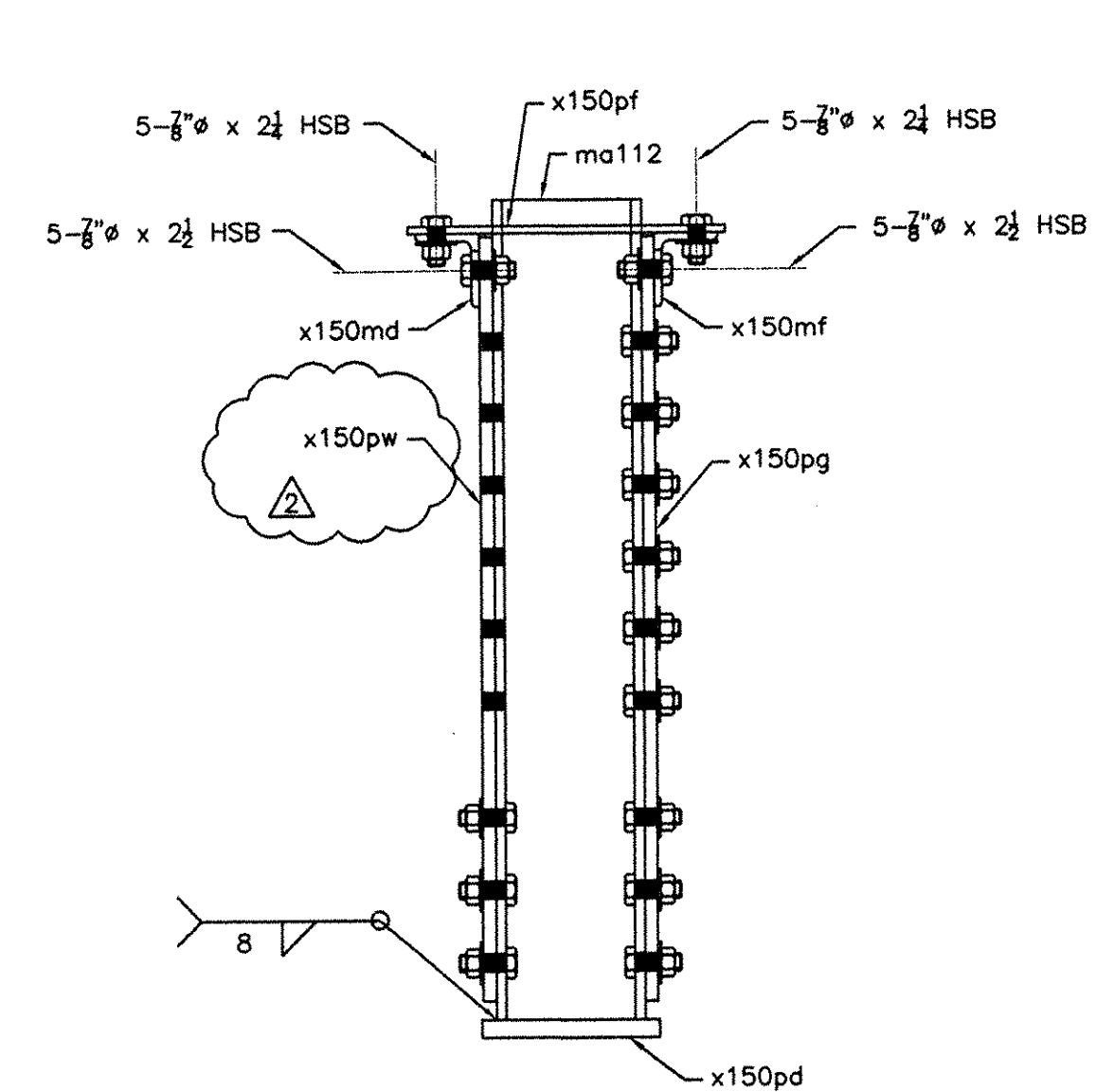


SECTION A-A



W 210 x 9.1
F 205 x 14.2

2 - VERTICAL BRACE ASSEMBLIES - 112VB2



SECTION A-A

Drawing Number	Revision Number	Ship Mark	Piece Mark	Qty	Type of Material	Size of Material	Grade	Length	Finish	Notes
112		112VB1		2			Total weight:		889 kg	
112		112VB1	ma112	2	W Wide Flng	200x59	M270M-GR345	1139	CVN	15
112		112VB1	x150md	2	L Angles	102x89x9.5	M270M-GR345	418	CVN	27
112		112VB1	x150mf	2	L Angles	102x89x9.5	M270M-GR345	418	CVN	27
112		112VB1	x150pd	2	PL Plate	25x250	M270M-GR345	250		60
112		112VB1	x150pf	2	PL Plate	10x418	M270M-GR345	446		61
112		112VB1	x150pg	2	PL Plate	18x1061	M270M-GR345	1132	CVN	62
112		112VB1	x150pw	2	PL Plate	18x1061	M270M-GR345	1132	CVN	62
112		112VB2		2			Total weight:		889 kg	
112		112VB2	ma112	2	W Wide Flng	200x59	M270M-GR345	1139	CVN	15
112		112VB2	x150md	2	L Angles	102x89x9.5	M270M-GR345	418	CVN	27
112		112VB2	x150mf	2	L Angles	102x89x9.5	M270M-GR345	418	CVN	27
112		112VB2	x150pd	2	PL Plate	25x250	M270M-GR345	250		60
112		112VB2	x150pf	2	PL Plate	10x418	M270M-GR345	446		61
112		112VB2	x150pg	2	PL Plate	18x1061	M270M-GR345	1132	CVN	62
112		112VB2	x150pw	2	PL Plate	18x1061	M270M-GR345	1132	CVN	62

BOLTS LIST		
QTY	DESCRIPTION	LENGTH
SHOP BOLTS LIST		
40	7/8" HSB	2 1/4
40	7/8" HSB	2 1/2
104	7/8" HSB	2 3/4
FIELD BOLTS LIST		
56	1" HSB	3 1/4

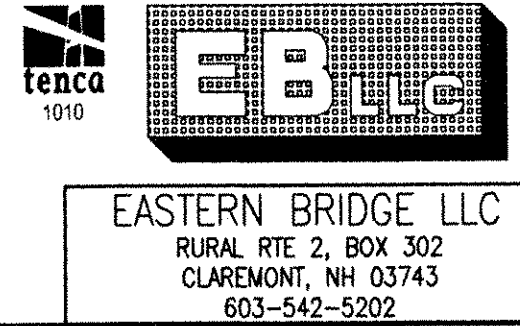
NOTES:

- 1- GENERAL NOTES: SEE GN101
- 2- HOLES: 15/16" (24#) (UN)
- 3- ALL HS BOLTS SHALL BE A325 TYPE 1 GALVANIZED C/W 1 NUT & 1 WASHER (UN)
- 4- ALL STEEL SHALL BE GALVANIZED, SEE GN101
- 5- ALL SHOP BOLTS SHALL BE HAND TIGHTEN
- 6- ALL HOLES SHALL BE "CNC" DRILLED (UN)
- 7- WIRE-BRUSH PREPARATION 3" OF OPEN HOLES FOR FAYING SURFACES PRIOR TO BOLTING

RECEIVED
 OK'D BY: _____ OK'D BY: *M. Ken*
 SEP 23 2005
 RESUBMIT: _____ APPROVED: _____
 BY: _____ DATE: 9/23/05
 RESERVED FOR STAMPS

REV	DATE	DESCRIPTION	QTY	DATE	ISSUED TO	APPROVAL
9/06/05		AS PER REVISED DESIGN	8	9/14/05	F.W. Whitcomb	APPROVAL
6/20/05		AS PER APPROVAL COMMENTS	8	4/8/05	F.W. WHITCOMB CONSTRUCTION	APPROVAL

PROJECT: ROUTE 100 OVER THE WEST RIVER
 LOCATION: TOWN OF JAMAICA
 ENGINEER: CLD CONSULTING ENGINEERS
 CUSTOMER: VERMONT A. O. T.
 DRAWING TITLE: VERTICAL BRACES ASSEMBLIES
 DRAWN BY: YT 02/18/05 JOB
 CHECKED BY: GG 03/23/05 NUMBER: 5075 SHEET NUMBER: 112



NOTICE
 This drawing shall not be used or reproduced in any manner, nor shall any similar drawings or structures be made therefrom, nor shall the information thereon be used for any purpose other than that for which it is released without the written consent of an officer of EASTERN BRIDGE LLC.