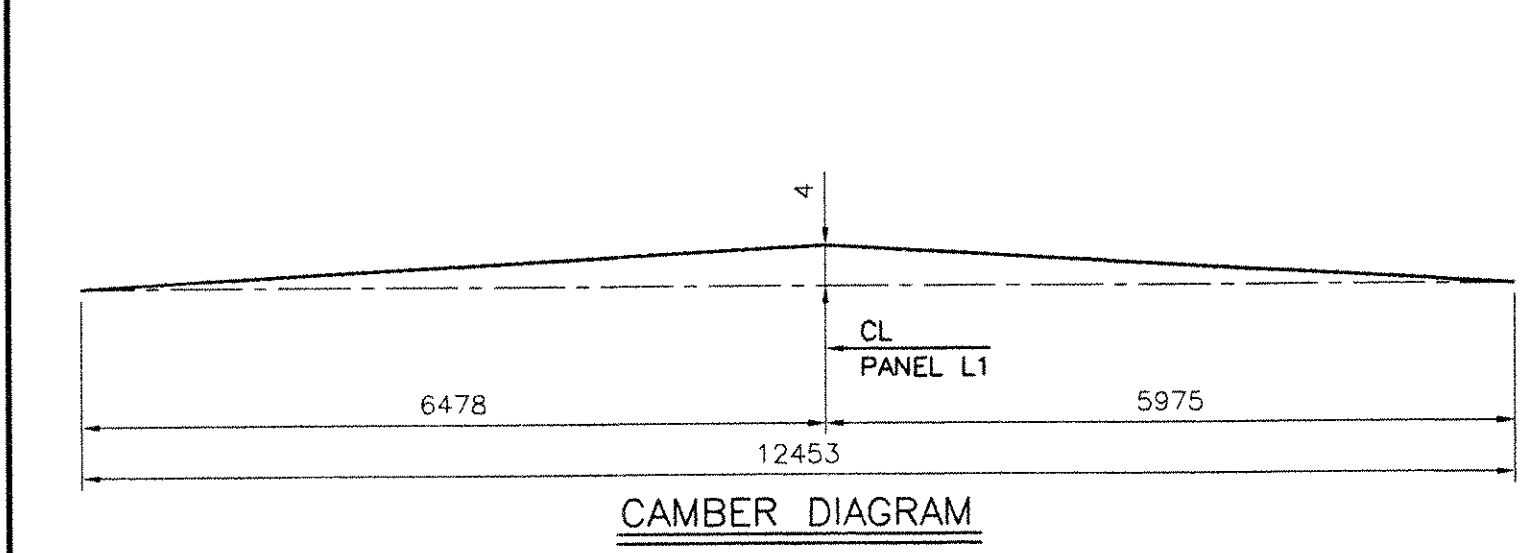
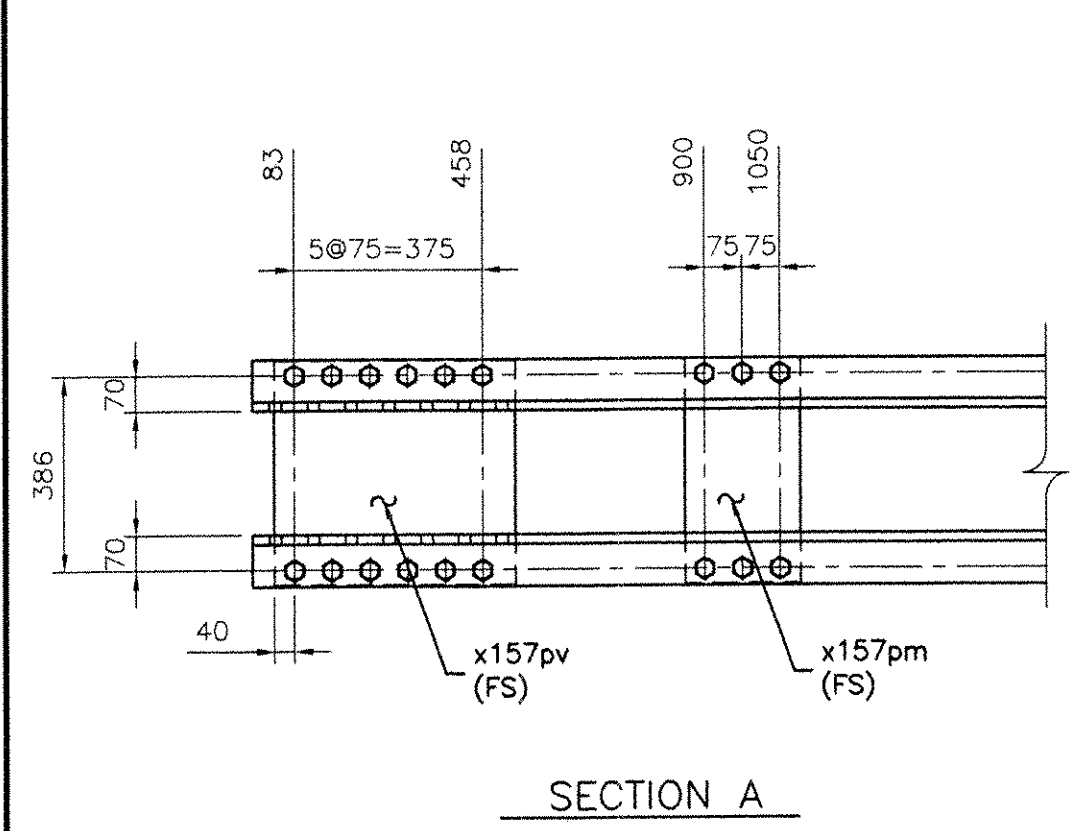
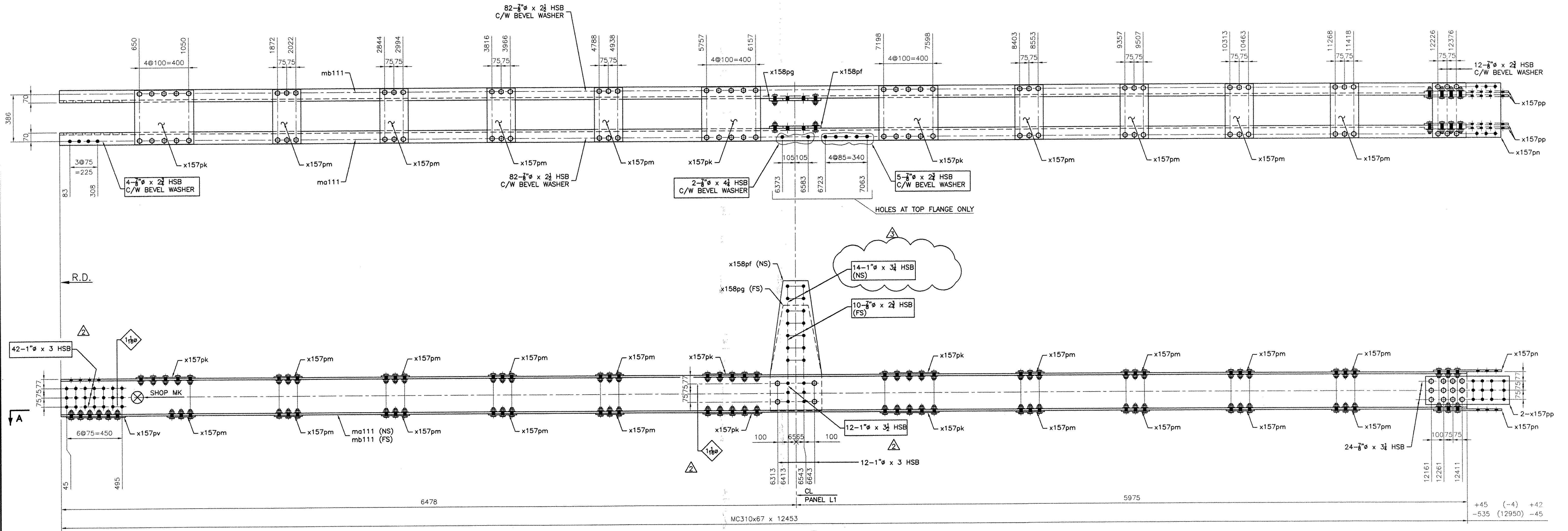


BOLTS LIST		
QTY	DESCRIPTION	LENGTH
FIELD BOLTS LIST		
38	7/8" HSB	2 3/4
4	7/8" HSB	4 1/4
84	1" HSB	3
28	1" HSB	3 1/4
24	1" HSB	3 1/2
22	BEVEL WASHER 7/8"	

BOLTS LIST		
QTY	DESCRIPTION	LENGTH
SHOP BOLTS LIST		
328	7/8" HSB	2 1/2
24	7/8" HSB	2 3/4
48	7/8" HSB	3 1/4
24	1" HSB	3
352	BEVEL WASHER 7/8"	

BILL OF MATERIAL										
Drawing Number	Revision Number	Ship Mark	Piece Mark	Qty	Type of Material	Size of Material	Grade	Length	Finish	Notes
111		111BC		2					Total weight:	4283 kg
111		111BC	ma111	2	MC Channel	310x67	M270M-GR345	12453	CVN	9
111		111BC	mb111	2	MC Channel	310x67	M270M-GR345	12453	CVN	9
111		111BC	x157pk	10	PL Plate	10x446	M270M-GR345	480		51
111		111BC	x157pm	34	PL Plate	10x230	M270M-GR345	446		52
111		111BC	x157pn	4	PL Plate	14x446	M270M-GR345	550	CVN	57
111		111BC	x157pp	8	PL Plate	14x230	M270M-GR345	670	CVN	55
111		111BC	x157pv	2	PL Plate	10x446	M270M-GR345	480		51
111		111BC	x158pf	2	PL Plate	18x420	M270M-GR345	1059	CVN	63
111		111BC	x158pg	2	PL Plate	18x420	M270M-GR345	859	CVN	63



2 - BOTTOM CHORD ASSEMBLY - 108BC

111 BC

- NOTES:
- 1- GENERAL NOTES: SEE GN101
 - 2- HOLES: 15/16" (24#) (UN)
 - 3- ALL HS BOLTS SHALL BE A325 TYPE 1 GALVANIZED C/W 1 NUT & 1 WASHER (UN)
 - 4- ALL STEEL SHALL BE GALVANIZED, SEE GN101
 - 5- ALL SHOP BOLTS SHALL BE HAND TIGHTEN
 - 6- ALL HOLES SHALL BE "CNC" DRILLED (UN)
 - 7- WIRE-BRUSH PREPARATION 3" OF OPEN HOLES FOR FAYING SURFACES PRIOR TO BOLTING

RECEIVED
 OK'D BY: *Mcm*
 SEP 23 2005
 RESUBMIT APPROVED: *As Noted*
 BY: DATE: 9/23/05

RESERVED FOR STAMPS

REV	DATE	DESCRIPTION	QTY	DATE	ISSUED TO	FOR
△	8/06/05	AS PER REVISED DESIGN				
△	8/17/05	AS PER REVISED DESIGN	8	9/9/05	F.W. Whitcomb	APPROVAL
△	6/20/05	BEVEL WASHER		4/8/05	F.W. WHITCOMB CONSTRUCTION	APPROVAL

PROJECT: ROUTE 100 OVER THE WEST RIVER
 LOCATION: TOWN OF JAMAICA
 ENGINEER: CLD CONSULTING ENGINEERS
 CUSTOMER: VERMONT A. O. T.

DRAWING TITLE: BOTTOM CHORD ASSEMBLIES
 DRAWN BY: YT 03/16/05 JOB
 CHECKED BY: GG 03/24/05 NUMBER: 5075 SHEET NUMBER: 111

NOTICE
 This drawing shall not be used or reproduced in any manner, nor shall any similar drawings or structures be made therefrom, nor shall the information thereon be used for any purpose other than that for which it is released without the written consent of an officer of EASTERN BRIDGE LLC.