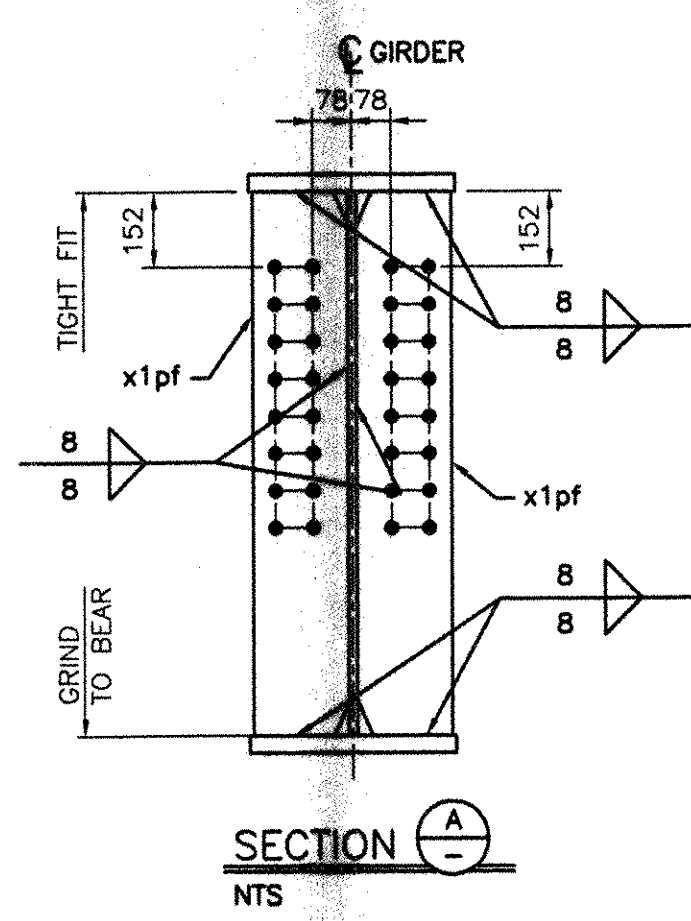
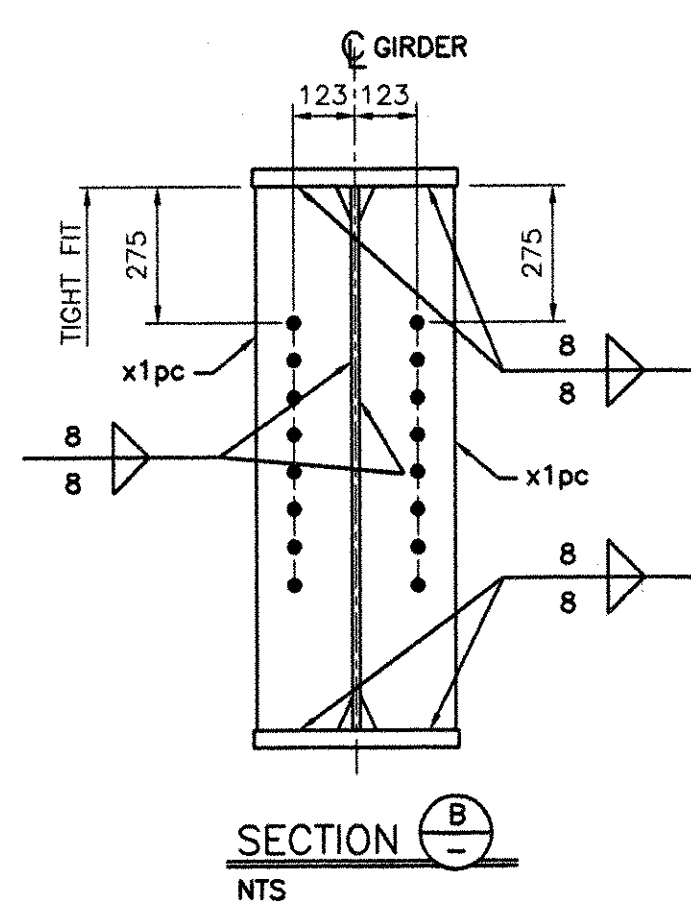


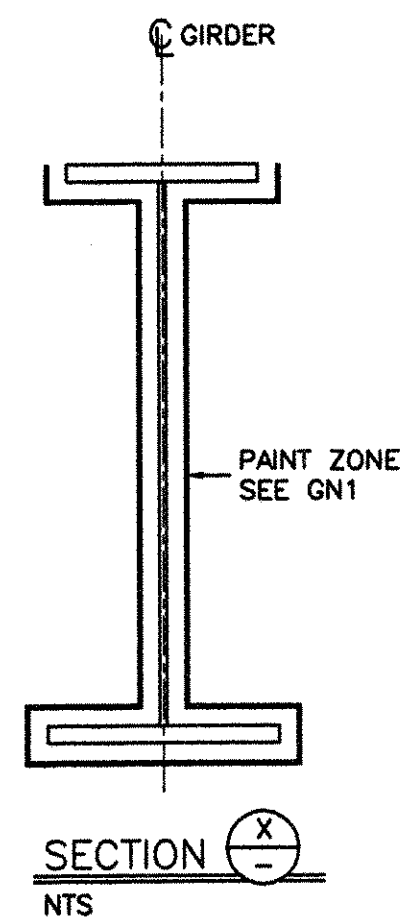
GIRDER 3G3 (1 REQ'D)
NTS



SECTION A-A
NTS



SECTION B-B
NTS

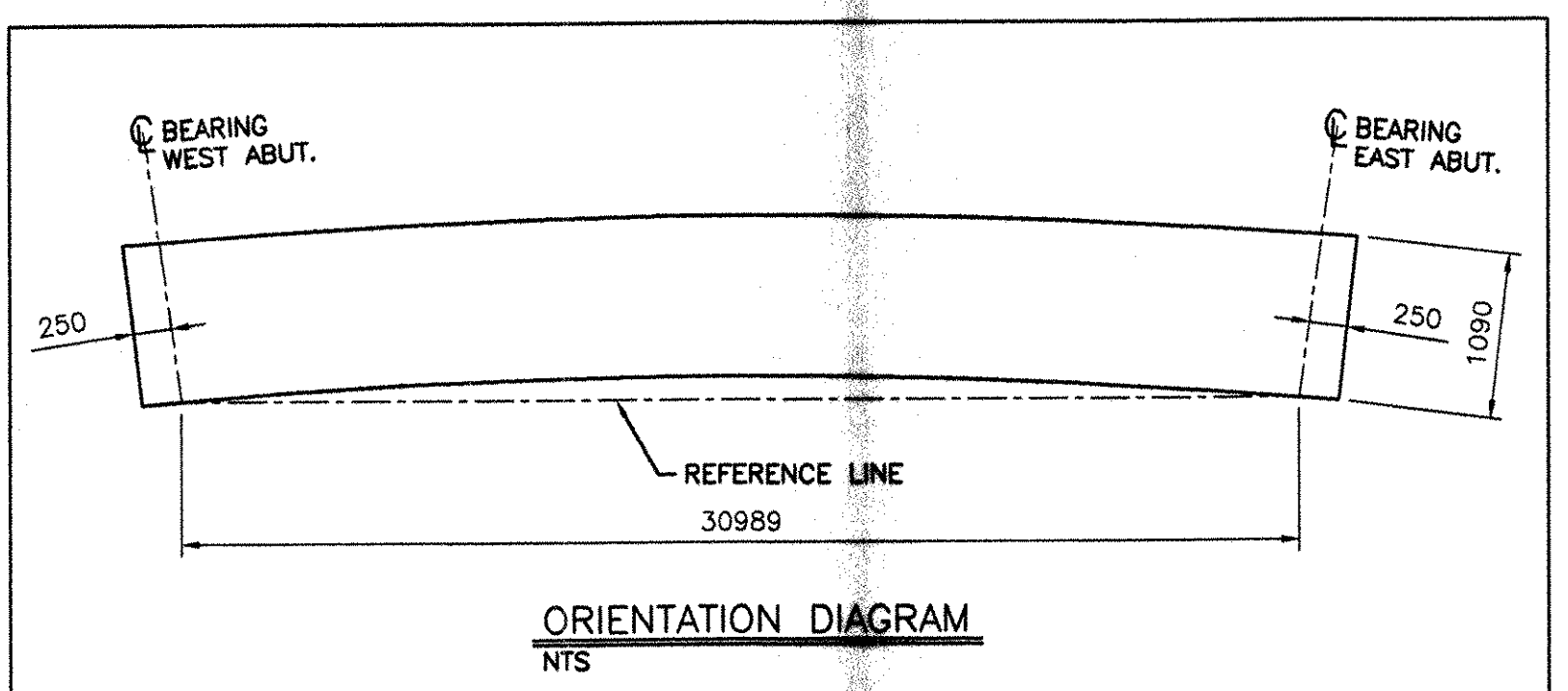


SECTION X-X
NTS

BILL OF MATERIAL										
Drawing Number	Revision Number	Ship Mark	Piece Mark	Qty	Type of Material	Size of Material	Grade	Length	Finish	Notes
3		3G3		1	PL Plate	16x1090	M270M-GR345W	20023	CVN	2
3		3G3	wc1a	1	PL Plate	16x1090	M270M-GR345W	11502	CVN	9
3		3G3	wc1b	1	PL Plate	16x1090	M270M-GR345W	19514		1
3		3G3	tf1a	1	PL Plate	34x410	M270M-GR345W	12000		8
3		3G3	tf1b	1	PL Plate	34x410	M270M-GR345W	19514		3
3		3G3	bf1a	1	PL Plate	34x410	M270M-GR345W	19489	CVN	10
3		3G3	bf1b	1	PL Plate	34x410	M270M-GR345W	1090		5
3		3G3	x1pc	8	PL Plate	14x190	M270M-GR345W	1090		4
3		3G3	x1pf	4	PL Plate	22x190	M270M-GR345W			
TOTAL WEIGHT									11533 kg	
-CUTS									2 kg	
+FIELD BOLTS									REFER TO 'E' DWG	
+WELD									59 kg	
NET TOTAL									11590 kg	

- NOTES:
 1- GENERAL NOTES: SEE GN1
 2- PAINT: SEE GN1
 3- HOLES: 15/16" (24#) (U.N.O.)
 4- REF. SHOP DWG'S: WC1

RESERVED FOR STAMPS

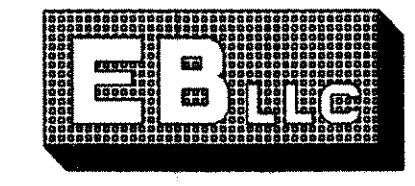


ORIENTATION DIAGRAM
NTS

NOTICE
 This drawing shall not be used or reproduced in any manner, nor shall any similar drawings or structures be made therefrom, nor shall the information thereon be used for any purpose other than that for which it is released without the written consent of an officer of EASTERN BRIDGE LLC.

REV	DATE	DESCRIPTION	QTY	DATE	ISSUED TO	Approval	FOR
			8	12/6/04	F W Whitcomb		

PROJECT: ROUTE 100 OVER THE WEST RIVER
 LOCATION: TOWN OF JAMAICA
 ENGINEER: CLD CONSULTING ENGINEERS
 CUSTOMER: VERMONT A. O. T.
 DRAWING TITLE: GIRDER 3G3
 DRAWN BY: BR 11/26/04 JOB SHEET NUMBER: 3
 CHECKED BY: GG 11/30/04 NUMBER: 5075



EASTERN BRIDGE LLC
 RURAL RTE 2, BOX 302
 CLAREMONT, NH 03743
 603-542-5202