

GENERAL NOTES

1 CONSTRUCTION SPECIFICATIONS:

ALL MATERIAL AND WORKMANSHIP TO BE IN ACCORDANCE WITH THE STATE OF VERMONT AGENCY OF TRANSPORTATION STANDARD SPECIFICATIONS FOR CONSTRUCTION DATED 2001 WITH LATEST REVISIONS AND THE SPECIAL PROVISIONS.

AMERICAN ASSOCIATION OF STATE HIGHWAY AND TRANSPORTATION OFFICIALS (A.A.S.H.T.O.) STANDARD SPECIFICATIONS FOR HIGHWAY BRIDGES, 17 TH EDITION DATED 2002, WITH LATEST REVISIONS.

2 MATERIAL SPECIFICATIONS:

UNLESS NOTED, ALL STEEL TO BE AASHTO M270M GRADE 345W (ASTM A709M-345W)

MATERIAL NOTED "CVN" ON DETAIL DRAWINGS SHALL BE CHARPY V-NOTCH TESTED IN ACCORDANCE WITH THE REQUIREMENTS OF VERMONT STANDARD SPECIFICATIONS.

HIGH STRENGTH BOLTS: AASHTO M164 (ASTM A325M) 7/8" (22mm) DIA. IN 15/16" (24mm) DIAMETER HOLES (U.N). TYPE 3 SHALL BE USED FOR UNPAINTED CONNECTIONS. TYPE 1 (GALV.) SHALL BE USED FOR PAINTED CONNECTIONS.

3. FABRICATION:

ALL HOLES SHALL BE PUNCHED OR DRILLED FULL SIZE.

STUDS ARE FURNISHED AND FIELD APPLIED BY OTHERS.

4 WELDING:

THE CONFIGURATION OF THE WELD JOINTS AND ALL WELDING PROCEDURES SHALL BE IN ACCORDANCE WITH AASHTO/AWS D.1.5-02 BRIDGE WELDING CODE AND ADDITION TO SPECIFICATIONS SHOWN ABOVE. ALL WELDING WILL BE DETAILED TO PRE-QUALIFIED JOINTS, UNLESS PROHIBITED BY THE DESIGNER.

WELDING OF MAIN LOAD CARRYING MEMBERS AND ATTACHMENTS SHALL BE PERFORMED USING THE AUTOMATIC SUBMERGED ARC & SHIELDED METAL ARC PROCESS. ALL WELDS ARE CONTINUOUS U.N.

NON DESTRUCTIVE TESTING OF WELDS SHALL BE IN ACCORDANCE WITH THE REFERENCED SPECIFICATION.

5 CLEANING:

ALL STEEL SHALL BE BLAST CLEANED AS PER SSPC SP-10 PER SPEC. 506.14(g) 2mm RADIUS ON ALL EDGES OF PAINTED SURFACES.

6 PAINTED:

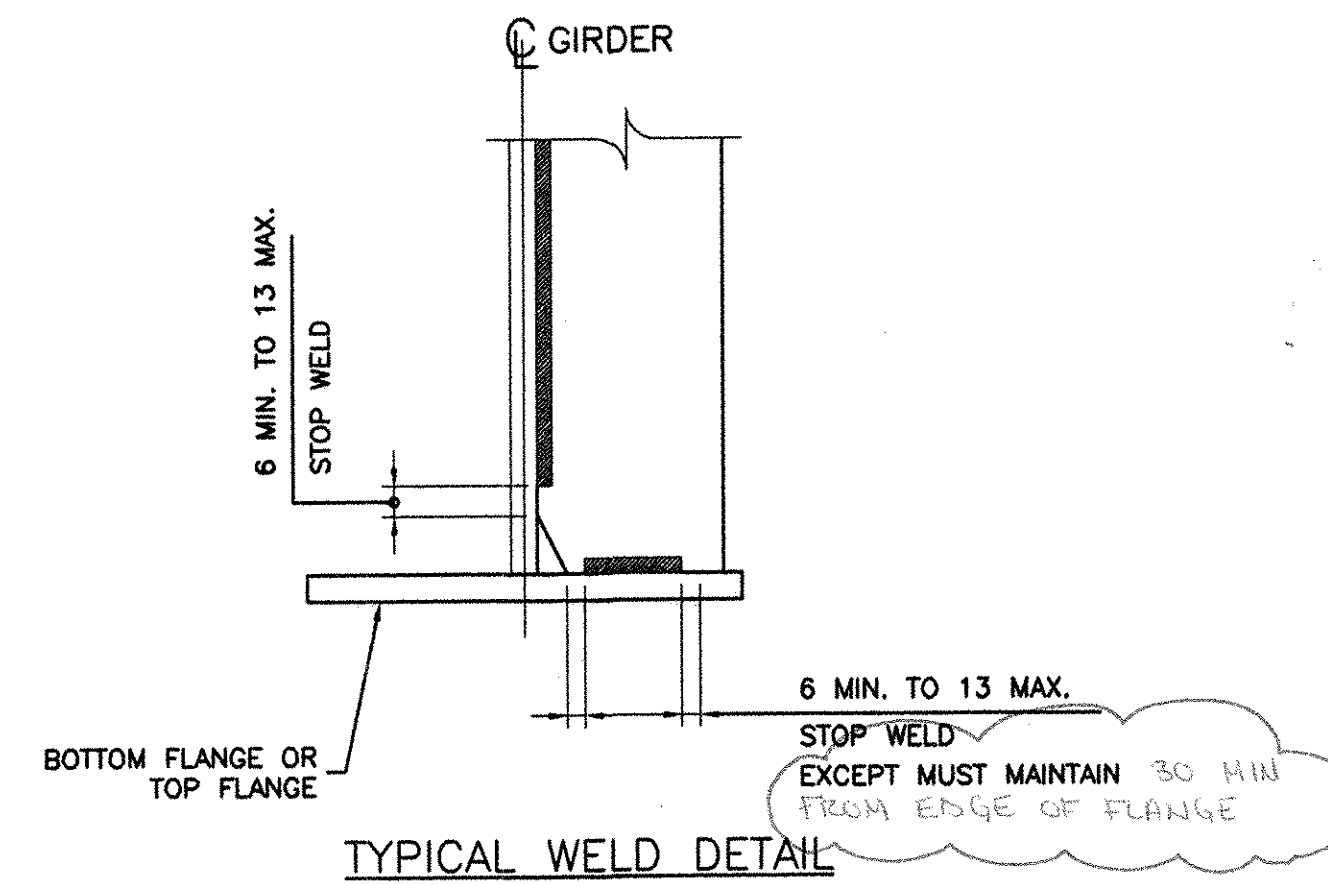
ALL STEEL COMPONENTS WITHIN A DISTANCE OF 2200 mm FROM THE EXPANSION END OF GIRDERS SHALL BE COATED WITH THE PROTECTIVE SYSTEM ACCORDING TO SECTION 513 OF THE SPECIFICATION. THE PAINT COLOR SHALL BE BROWN. PAINT SYSTEM MUST BE SYSTEM LISTED ON THE QUALIFIED PRODUCT LIST SECTION 513.02 BROWN COLOR CHIP NO.20059. PROTECTIVE GREASE SHALL LBE APPLIED IN THE FIELD BY OTHERS.

7 FIELD CONNETIONS:

ALL FIELD CONNECTIONS SHALL BE MADE WITH 7/8"(22mm) DIAMETER HIGH STRENGTH A-325 BOLTS TYPE 3, IN 15/16"(24mm) DIAMETER HOLES UNLESS OTHERWISE NOTED. INSTALLED PER 506.19(c) AND SPECIAL PROVISIONS.

BOLTS SHALL HAVE HEAVY HEX. NUT, HEX. HEAD & ONE FLAT WASHER EACH (WASHER TO BE PLACED UNDER TURNED ELEMENT).

PIECE MARKS WILL BE LOCATED AS SHOWN ON ERECTION DRAWING.



SHOP DRAWING REVIEW	
REVIEW IS ONLY FOR GENERAL CONFORMANCE WITH DESIGN CONCEPT	
<input type="checkbox"/> PROVIDE AS SUBMITTED	
<input checked="" type="checkbox"/> PROVIDE AS CORRECTED	
<input type="checkbox"/> REVISE AND RESUBMIT	
<input type="checkbox"/> REJECTED - SEE REMARKS	
<input type="checkbox"/> SUBMITTAL NOT REQUIRED - RETURNED WITHOUT REVIEW	
THIS REVIEW IS ONLY FOR GENERAL CONFORMANCE WITH THE DESIGN CONCEPT OF THE PROJECT AND GENERAL COMPLIANCE WITH THE INFORMATION GIVEN IN THE CONTRACT DOCUMENTS. ANY ACTION, CORRECTIONS OR COMMENTS SHOWN AND/OR NOTED ARE SUBJECT TO THE REQUIREMENTS OF THE CONTRACT DOCUMENTS. CONTRACTOR IS RESPONSIBLE FOR: DETERMINING THE ACCURACY AND COMPLETENESS OF DETAILS, SUCH AS DIMENSIONS AND QUANTITIES; SUBSTITUTING INSTRUCTIONS FOR INSTALLATION OR PERFORMANCE OF EQUIPMENT OR SYSTEMS; THE MEANS, METHODS, TECHNIQUES, SEQUENCES AND PROCEDURES OF CONSTRUCTION, INCLUDING SAFETY PRECAUTIONS AND PROCEDURES; AND THE SELECTION OF FABRICATION PROCESSES. ENGINEER'S APPROVAL OF A SPECIFIC ITEM SHALL NOT INDICATE APPROVAL OF AN ASSEMBLY OF WHICH THE ITEM IS A COMPONENT. FURTHER, ENGINEER'S REVIEW OF CONTRACTOR'S SUBMITTALS SHALL NOT RELIEVE THE CONTRACTOR OF ITS OBLIGATIONS UNDER THE CONTRACT DOCUMENTS WITH RESPECT TO THE PREPARATION AND/OR APPROVAL OF SUCH SUBMITTALS	
CLD CONSULTING ENGINEERS, INC. 545 CENTRAL STREET MANCHESTER, NEW HAMPSHIRE	
By: <i>wh</i>	DATE: 12-29-04

RECEIVED
DEC - 7 2004
FRANK W. WHITCOMB
CONSTRUCTION CORP.

NOTICE
This drawing shall not be used or reproduced in any manner, nor shall any similar drawings or structures be made therefrom, nor shall the information thereon be used for any purpose other than that for which it is released without the written consent of an officer of EASTERN BRIDGE LLC.

RESERVED FOR STAMPS

REV	DATE	DESCRIPTION	QTY	DATE	ISSUED TO	FOR
			8	12/16/04	Fw Whitcomb	Approval

PROJECT: ROUTE 100 OVER THE WEST RIVER
 LOCATION: TOWN OF JAMAICA
 ENGINEER: CLD CONSULTING ENGINEERS
 CUSTOMER: VERMONT A. O. T.
 DRAWING TITLE: GENERAL NOTES
 DRAWN BY: BR 11/26/04
 CHECKED BY: GG 11/30/04
 JOB NUMBER: 5075
 SHEET NUMBER: GN1

