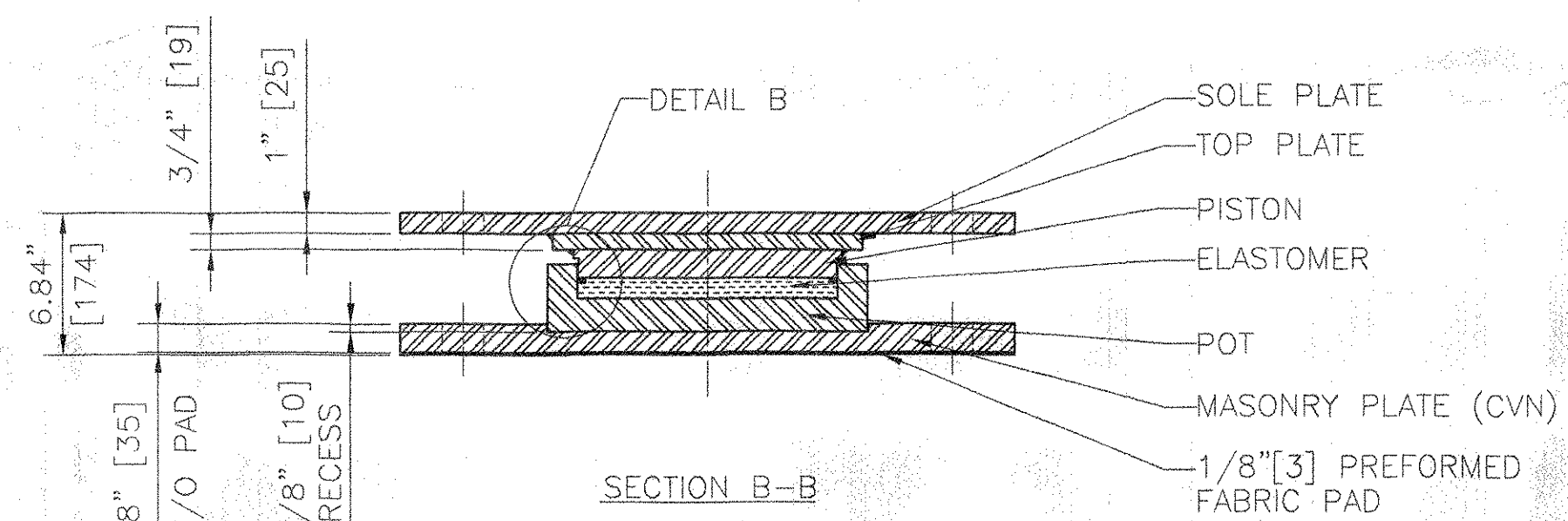
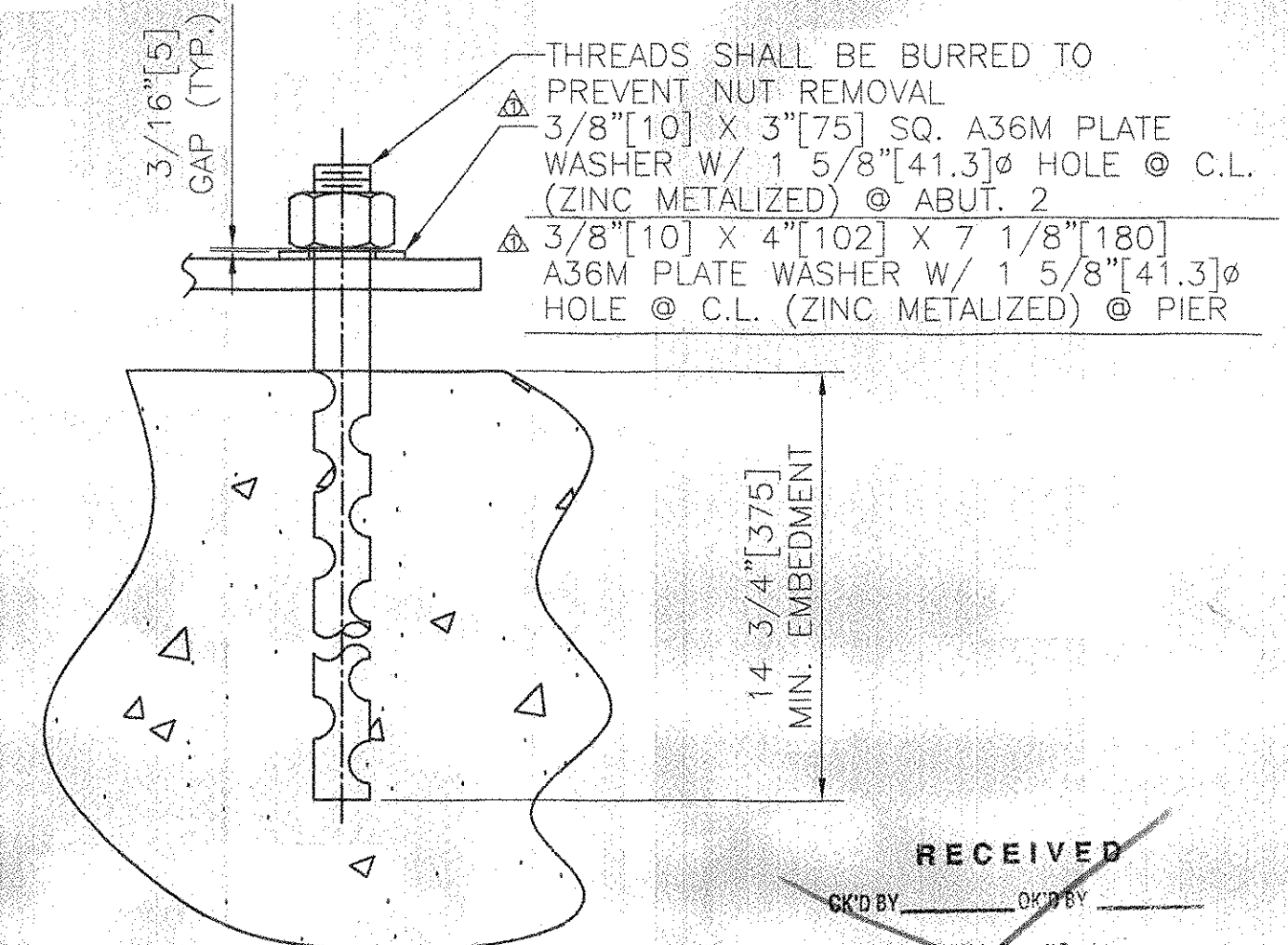


**GUIDED EXPANSION POT BEARING**  
 LOCATION - PIER, TRUSS 1 & 2  
 QUANTITY - 2  
 TOTAL VERTICAL LOAD - 428 KIPS [1900 KN]  
 TOTAL HORIZONTAL LOAD - 74 KIPS [325 KN]  
 TOTAL LONGITUDINAL MOVEMENT - 4 1/2\"/>

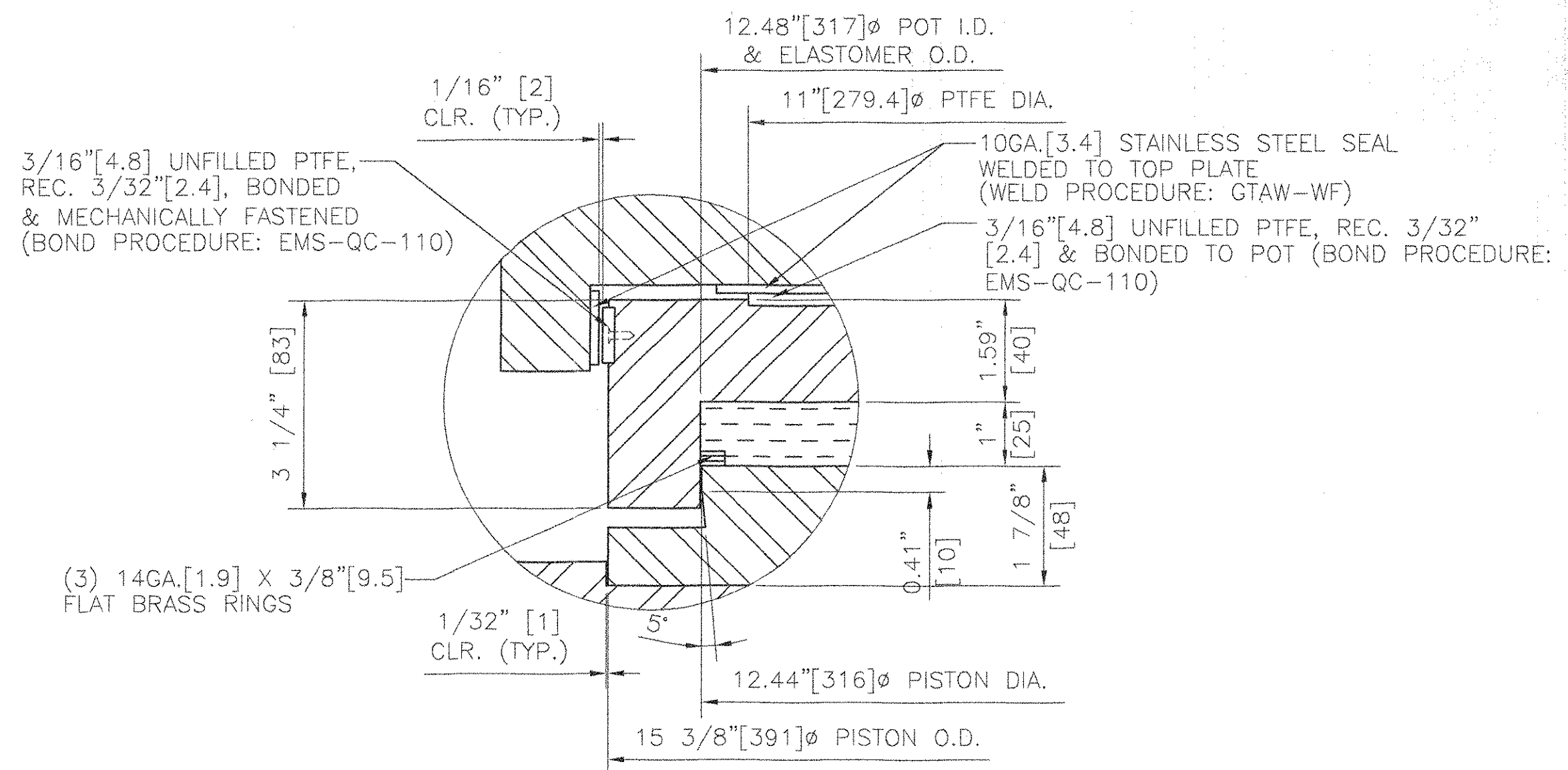
**NOTE:**  
 OVERALL HEIGHTS DIFFER FROM THOSE SHOWN ON THE CONTRACT PLANS. CONTRACTOR SHALL ADJUST PEDESTAL HEIGHTS TO ACCURATELY REFLECT THE HEIGHTS OF BEARINGS SUPPLIED.



**FIXED POT BEARING**  
 LOCATION - ABUTMENT 2, TRUSS 1 & 2  
 QUANTITY - 2  
 TOTAL VERTICAL LOAD - 428 KIPS [1900 KN]  
 TOTAL HORIZONTAL LOAD - 74 KIPS [325 KN]



**RECEIVED**  
 JUN 16 2005  
**RECEIVED**  
 JUN 16 2005



**MATERIAL:**  
 STEEL - ASTM A709M GR. 250 ZINC METALIZED & SEALED WITH AN APPROVED SEALER (STEEL FOR MASONRY PLATES SHALL HAVE CVN CERTIFICATIONS)  
 ELASTOMER - AASHTO 50 DUROMETER NEOPRENE  
 FLAT BRASS RINGS - ASTM B36 HALF HARD  
 PREFORMED FABRIC PAD - AASHTO 18.4.9.1 DIV. II  
 STAINLESS STEEL - ASTM A240 TYPE 304, 10 RMS FINISH OR LESS  
 PTFE - ASTM D4894 VIRGIN UNFILLED

**NOTES:**  
 1. UNITS: INCH[mm]  
 2. DESIGN ROTATION - 0.024 RADIAN  
 3. BEARINGS MUST NOT BE DISASSEMBLED  
 4. ALL BEARINGS SHALL BE METALIZED AS PER SECTION 531.04(b) & 506.15 (a) & (b). AREAS OF METALIZED DAMAGED BY FIELD WELDS OR HANDLING SHALL BE REPAIRED PER SUPPLEMENTAL SPECIFICATION 513.06(f).  
 5. LOCATION OF FABRICATION PLANT - 70 SOUTH ST., WALPOLE, MA 02081  
 6. COSMEC INC. REPRESENTATIVE - MR. MATT McANDREWS (508-668-6600)  
 7. PROTECT PTFE & S.S. SURFACES FROM DIRT, WELD SPATTER, & ANY OTHER FOREIGN SUBSTANCES.  
 8. PRIOR TO METALLIZING, ALL CORNERS AND EDGES OF STEEL PLATES, SHAPES, ETC. SHALL BE GROUND TO A 1/16\"/>

**STATE OF VERMONT**  
**AGENCY OF TRANSPORTATION**

PROJECT NO. BRF 013-1(8)  
 BRIDGE NO. 80  
 VT RTE 100 OVER THE WEST RIVER  
 TOWN OF JAMAICA

**COSMEC, INC.** 70 SOUTH STREET  
 WALPOLE, MA 02081

SCALE 1/8" = 1" DRAWN BY: NH CHECKED BY: MCM  
 DATE: 4.4.05 DATE: 4.6.05

**COSMEC POT BEARINGS**

REV.	ADDED DIA. HOLE IN WASHERS. REVISED TO RADIUS TO 10 RIMS & REMOVED TACK WELD WASHER TO PLATE	BY	DATE	CHK'D	DATE
		NH	6.13.05		

CUSTOMER: F.W. WHITCOMB S.O. NUMBER: 60264 DRAWING NUMBER: 4407 REV: 1