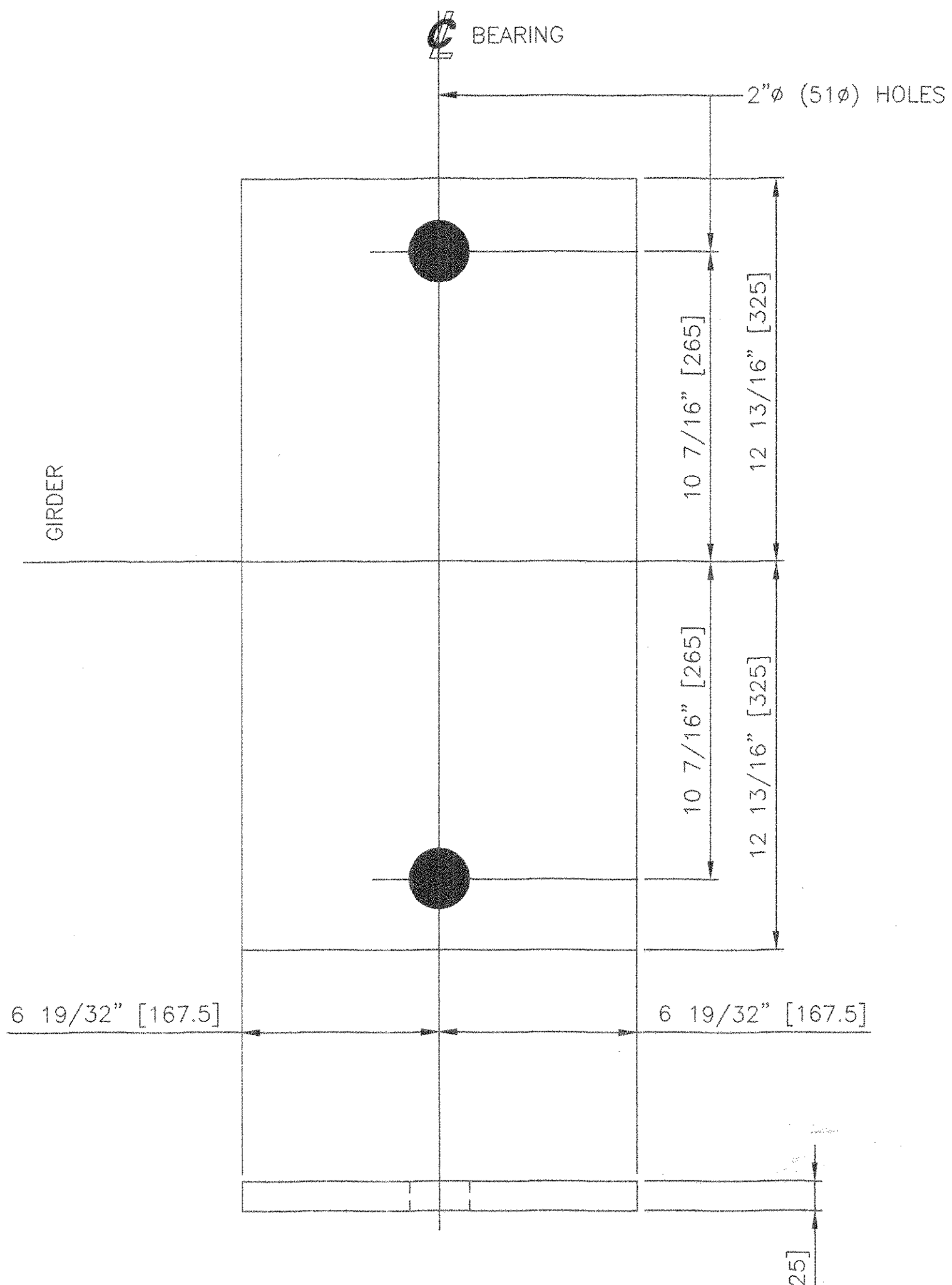
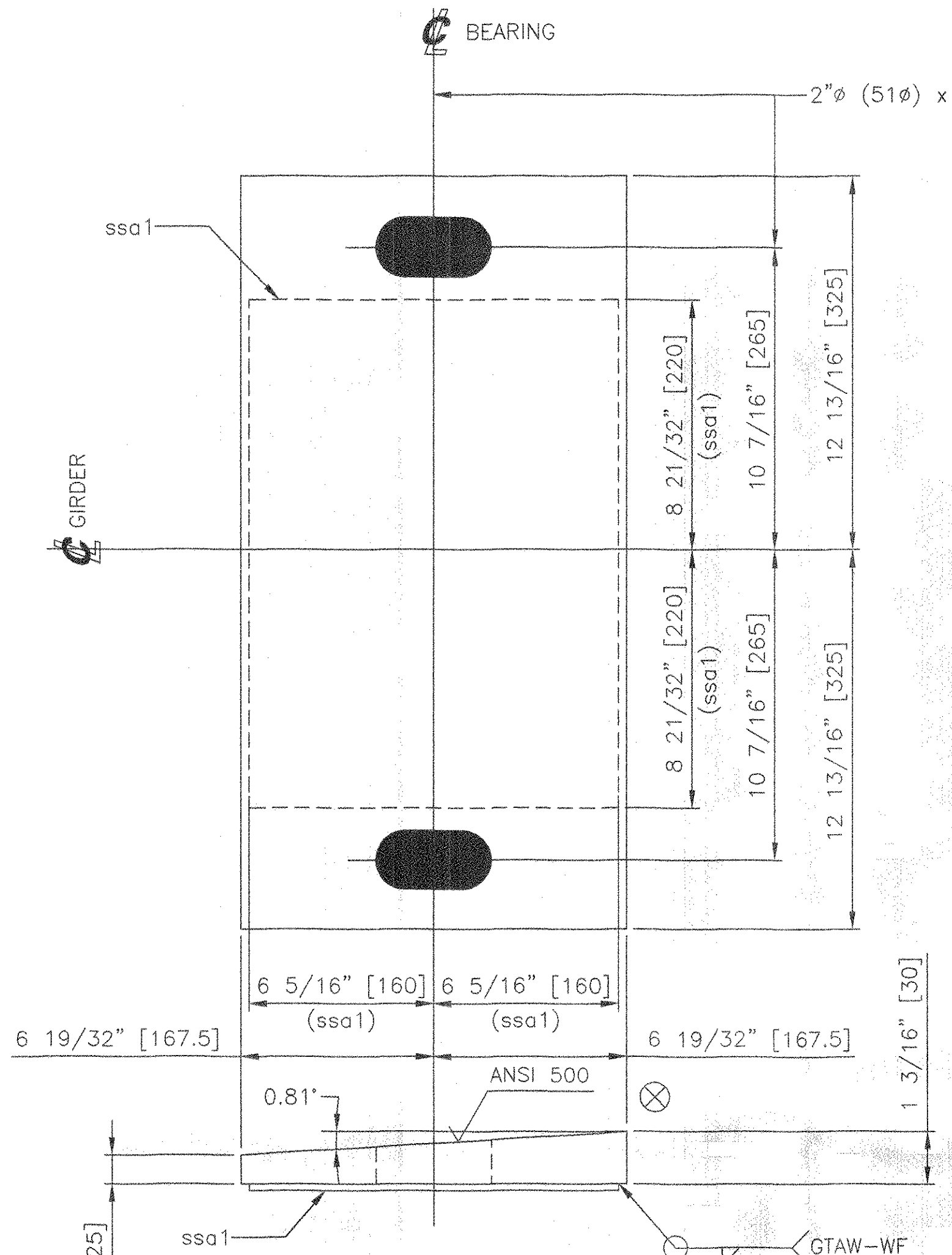


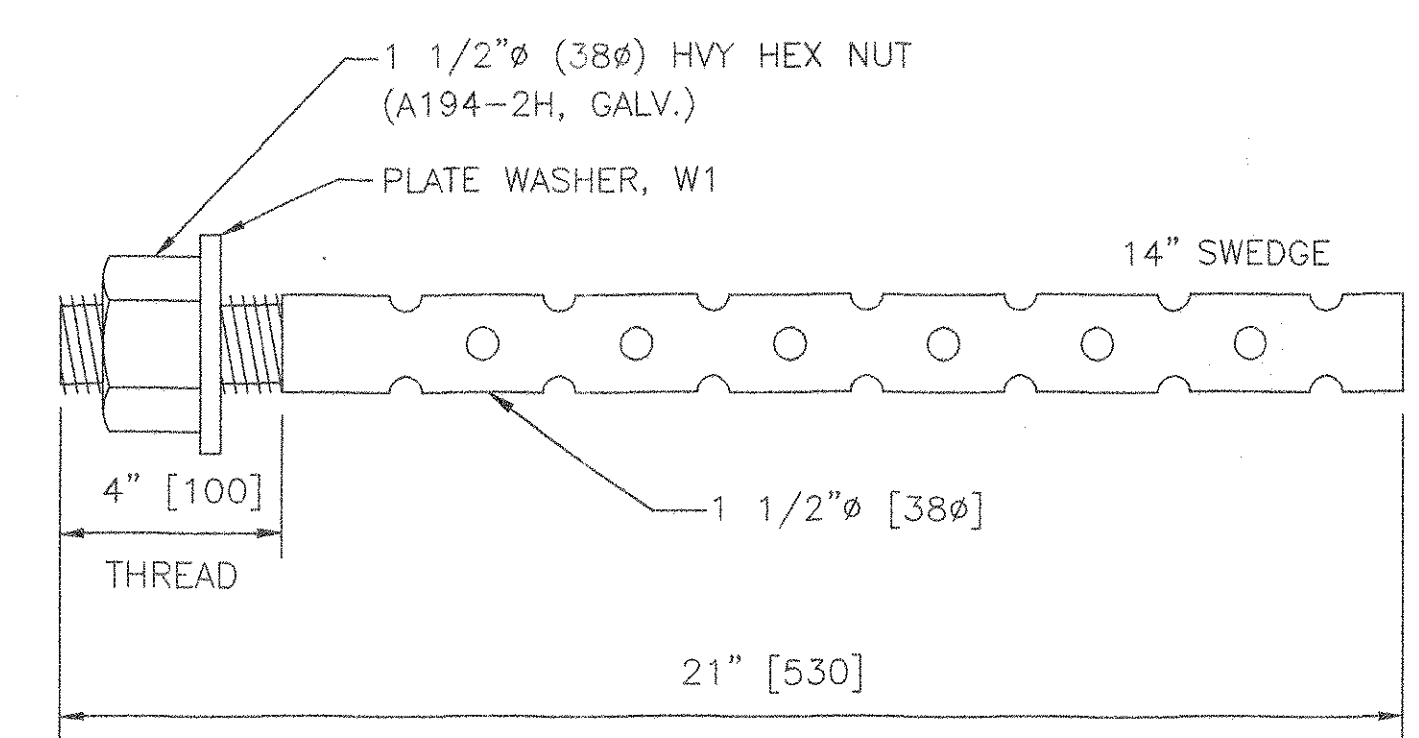
MARK	QTY	DESCRIPTION	FT	IN	16ths	FAB MARK	MILL MARK	WEIGHT
SP1	5	PL 1" (25) x 13 3/16" (335)		25	(650)		METALLIZED	481
SP2	5	PL 1 3/16" (30) x 13 3/16" (335)		25	(650)		METALLIZED	481
	5	STAINLESS PL 16ga (1.6) x 2 5/8" (320)		17	(440)	ssa1	A240 TYPE 304	20
AB1	10	RD 1 1/2" (38)		21	(530)		F1554 GR55	105
AB2	10	RD 1 1/2" (38)		21	(530)		F1554 GR55	105
W1	10	PL 3/8" (10) x 3" (75)		3	(75)		GALV.	10
W2	10	PL 3/8" (10) x 3" (75)		6	(175)		GALV.	22
	20	1 1/2" (38) HVY HEX NUTS					A194-2H	19
TOTAL =								1243



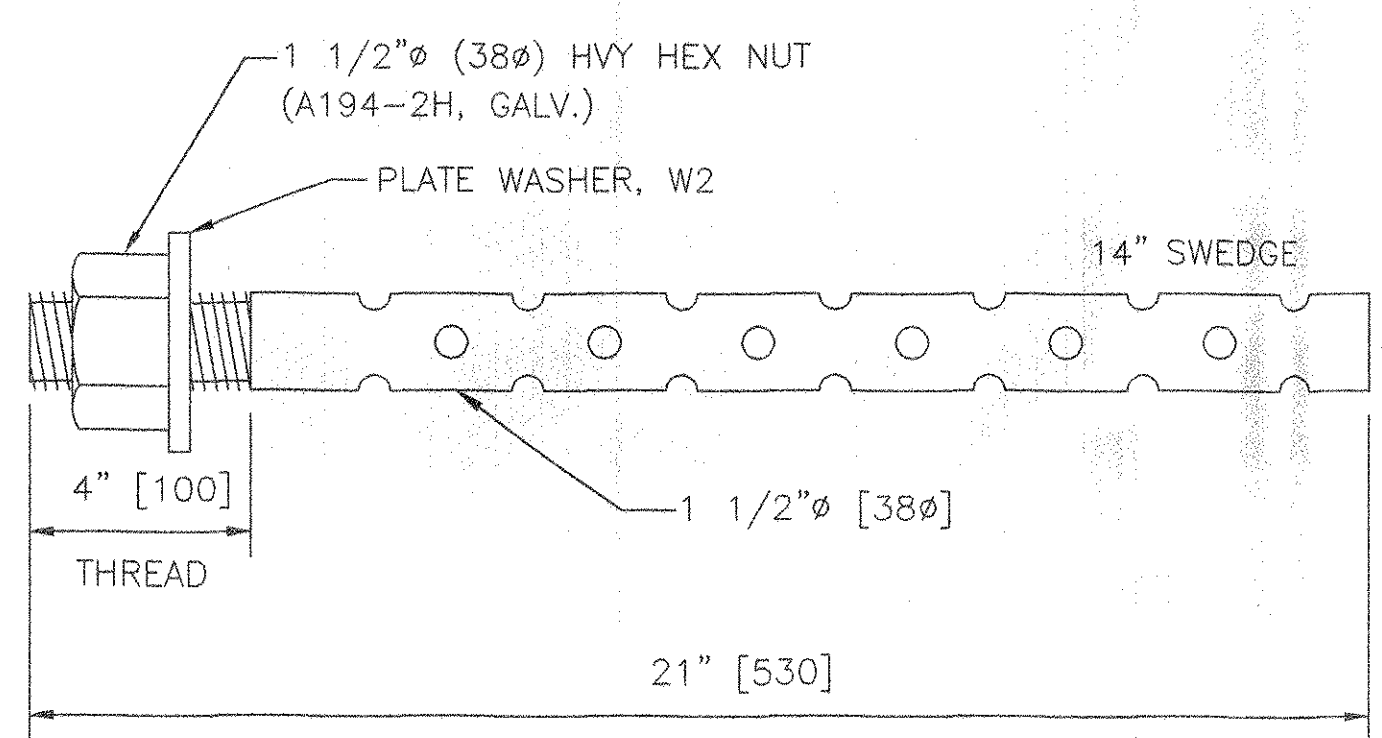
5 FIXED SOLE PLATES, SP1
 PL 1" (25) x 13 3/16" (335) x 25 5/8" (650)
 (METALLIZED)
 LOCATE AT ABUTMENT 1



5 EXPANSION SOLE PLATES, SP2
 PL 1 3/16" (30) x 13 3/16" (335) x 25 5/8" (650)
 (METALLIZED)
 LOCATE AT PIER



10 ANCHOR BOLTS, AB1
 RD 1 1/2" (38) x 21" (530)
 (F1554 GR.55, GALV.)
 MIN. EMBED. 15" (380)
 USE WITH SOLE PLATE SP1



10 ANCHOR BOLTS, AB2
 RD 1 1/2" (38) x 21" (530)
 (F1554 GR.55, GALV.)
 MIN. EMBED. 15" (380)
 USE WITH SOLE PLATE SP2

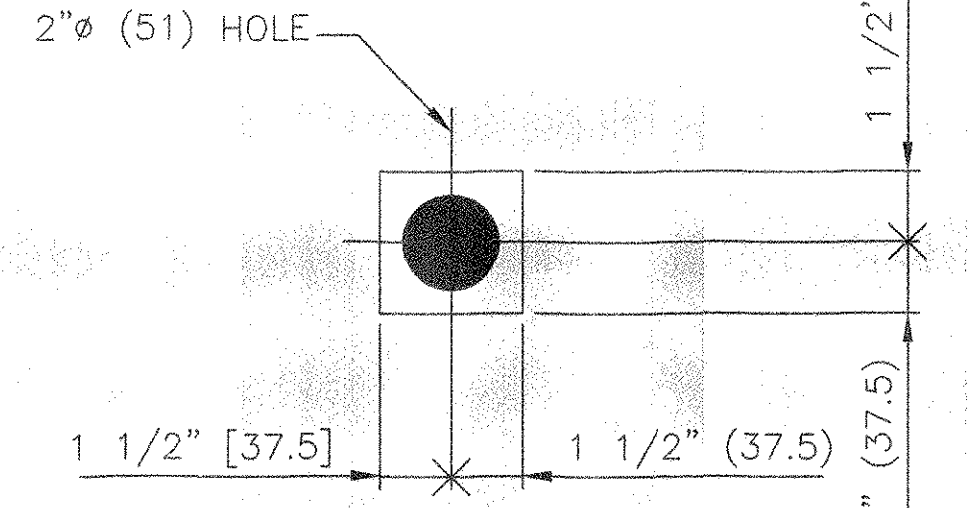
SHOP DRAWING REVIEW
 REVIEW IS ONLY FOR GENERAL CONFORMANCE WITH DESIGN CONCEPT

PROVIDE AS SUBMITTED
 PROVIDE AS CORRECTED
 REVISE AND RESUBMIT
 REJECTED - SEE REMARKS
 SUBMITTAL NOT REQUIRED - RETURNED WITHOUT REVIEW

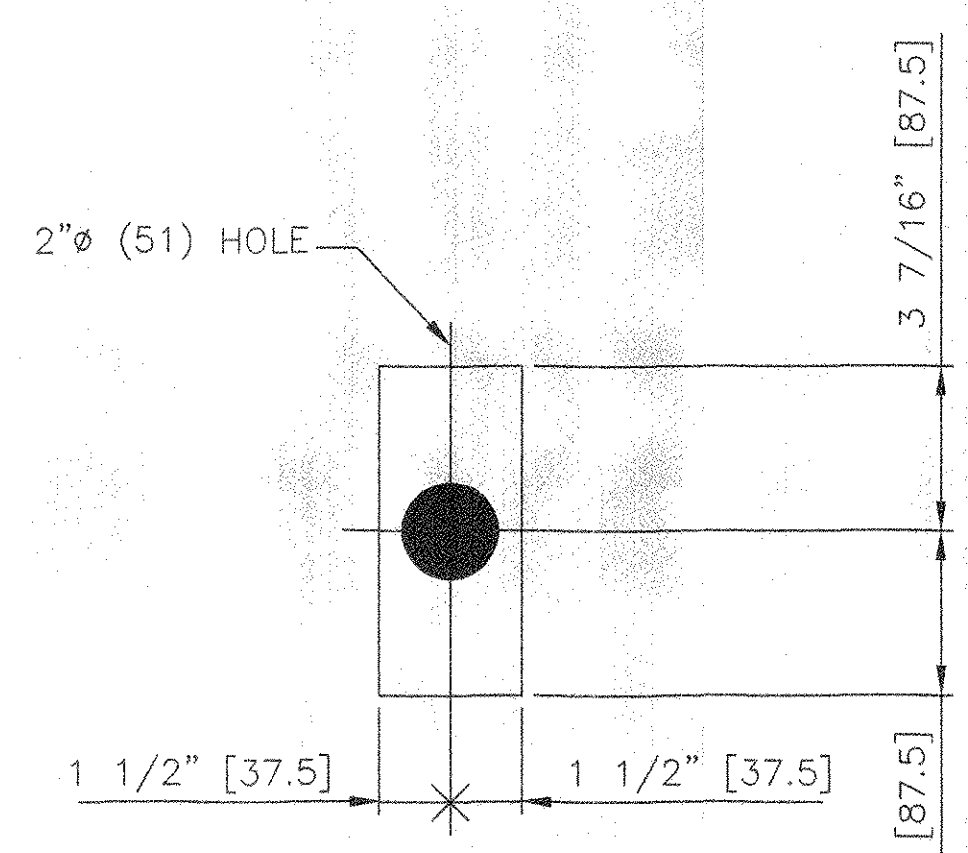
THIS REVIEW IS ONLY FOR GENERAL CONFORMANCE WITH THE DESIGN CONCEPT OF THE PROJECT AND GENERAL COMPLIANCE WITH THE INFORMATION GIVEN IN THE CONTRACT DOCUMENTS. ANY ACTION, CORRECTIONS OR COMMENTS SHOWN AND/OR NOTED ARE SUBJECT TO THE REQUIREMENTS OF THE CONTRACT DOCUMENTS. CONTRACTOR IS RESPONSIBLE FOR DETERMINING THE ACCURACY AND COMPLETENESS OF DETAILS, SUCH AS DIMENSIONS AND QUANTITIES; SUBSTANTIATING INSTRUCTIONS FOR INSTALLATION OR PERFORMANCE OF EQUIPMENT OR SYSTEMS; THE MEANS, METHODS, TECHNIQUES, SEQUENCES AND PROCEDURES OF CONSTRUCTION, INCLUDING SAFETY PRECAUTIONS AND PROCEDURES; AND THE SELECTION OF FABRICATION PROCESSES. ENGINEER'S APPROVAL OF A SPECIFIC ITEM SHALL NOT INDICATE APPROVAL OF AN ASSEMBLY OF WHICH THE ITEM IS A COMPONENT. FURTHER, ENGINEER'S REVIEW OF CONTRACTOR'S SUBMITTALS SHALL NOT RELIEVE THE CONTRACTOR OF ITS OBLIGATIONS UNDER THE CONTRACT DOCUMENTS WITH RESPECT TO THE PREPARATION AND/OR APPROVAL OF SUCH SUBMITTALS.

CJD CONSULTING ENGINEERS, INC.
 500 COMMERCIAL STREET
 MANCHESTER, NEW HAMPSHIRE

BY: JH DATE: 4-11-05



10 PLATE WASHERS, W1
 PL 3/8" (10) x 3" (75) x 3" (75)
 (GALV.)
 USE WITH AB1



10 PLATE WASHERS, W2
 PL 3/8" (10) x 3" (75) x 6 7/8" (175)
 (GALV.)
 USE WITH AB2

ENGLISH EQUIVALENT MATERIAL FURNISHED.
 METRIC EQUIVALENT IN PARENTHESIS.

SHOP NOTES:

- MATERIAL NOTED AS AASHTO M270 GR.250 MAY BE EITHER AASHTO M250 GR. 250, A709 GR.36 OR A36.
- STAINLESS STEEL: ASTM A240 TYPE 304, #8 MIRROR FINISH.
- PTFE SHALL BE ASTM D1457, UNFILLED.
- ELASTOMER: 50 DUROMETER, GR. 4, NATURAL RUBBER, CONFORMING TO AASHTO STANDARD SPECIFICATIONS FOR HIGHWAY BRIDGES, DIV. II, SECTION 18.
- MATERIAL NOTED SHALL BE METALLIZED OR GALVANIZED IN ACCORDANCE WITH SUBSECTIONS 506.15(a) AND (b), AND 531.04(b) OF THE 2001 STANDARD SPECIFICATIONS.
- ANCHOR BOLTS: ASTM F1554, GR.55, GALVANIZED.
- ANCHOR BOLTS AND ASSOCIATED HARDWARE SHALL BE GALVANIZED IN ACCORDANCE WITH ASTM A123 (AASHTO M111) OR ASTM 153 (AASHTO M232) AS APPLICABLE.
- BEARINGS SHALL CONFORM TO AASHTO STANDARD SPECIFICATIONS FOR HIGHWAY BRIDGES, 17TH EDITION, AND ITS LATEST REVISIONS.
- ALL SOLE PLATES SHALL BE SMOOTH AND STRAIGHT.
- SHOP TO MARK HIGH SIDE OF PLATE.

11. PRIOR TO GALVANIZING OR METALLIZING, ALL CORNERS AND EDGES OF STEEL PLATES, SHAPES, ETC. SHALL BE GROUNDED TO A 1/16" RADIUS.

RECEIVED
 OK'D BY: _____
 APR 05 2005
 RESUBMIT APPROVED _____
 BY: _____ DATE: _____

STATE OF VERMONT
 AGENCY OF TRANSPORTATION
 VERMONT ROUTE 100
 BRIDGE OVER WEST RIVER
 TOWN OF JAMAICA
 PROJECT NO. BRF 013-1(8)

COSMEC, INC. 70 SOUTH STREET WALPOLE, MA 02081

SCALE: 1/4"=1" DRAWN BY: JEP CHECKED BY: PJM
 SHEET 1 OF 2 DATE: 03/05 DATE: 03/05

COSMEC BEARING 120 bb

CUSTOMER: FRANK W. WHITCOMB CONST. CORP. S.O. NUMBER: 60264 DRAWING NUMBER: 4400 REV: 0

REV.	BY	DATE	CHK'D BY	DATE
---	---	---	---	---