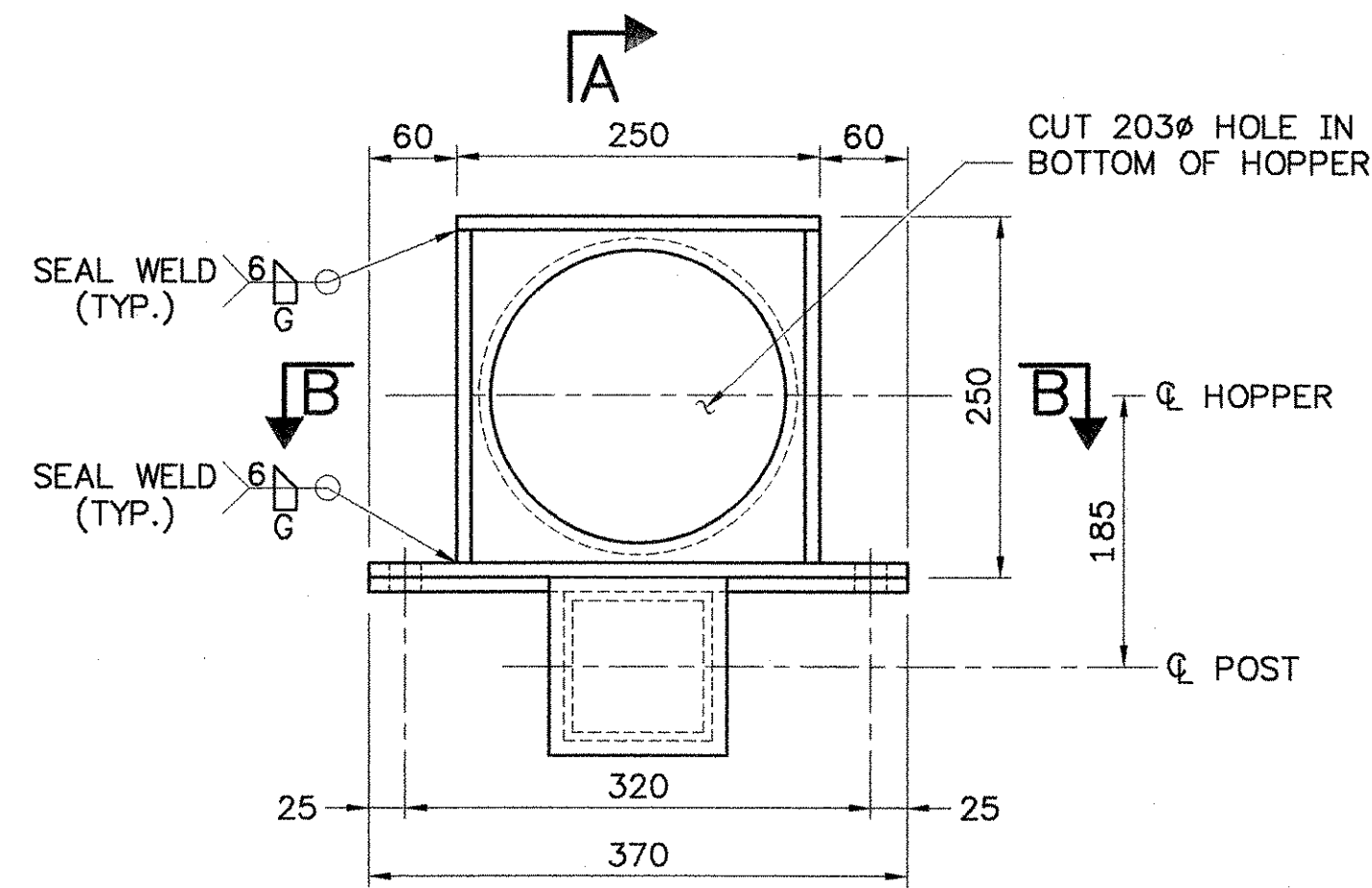


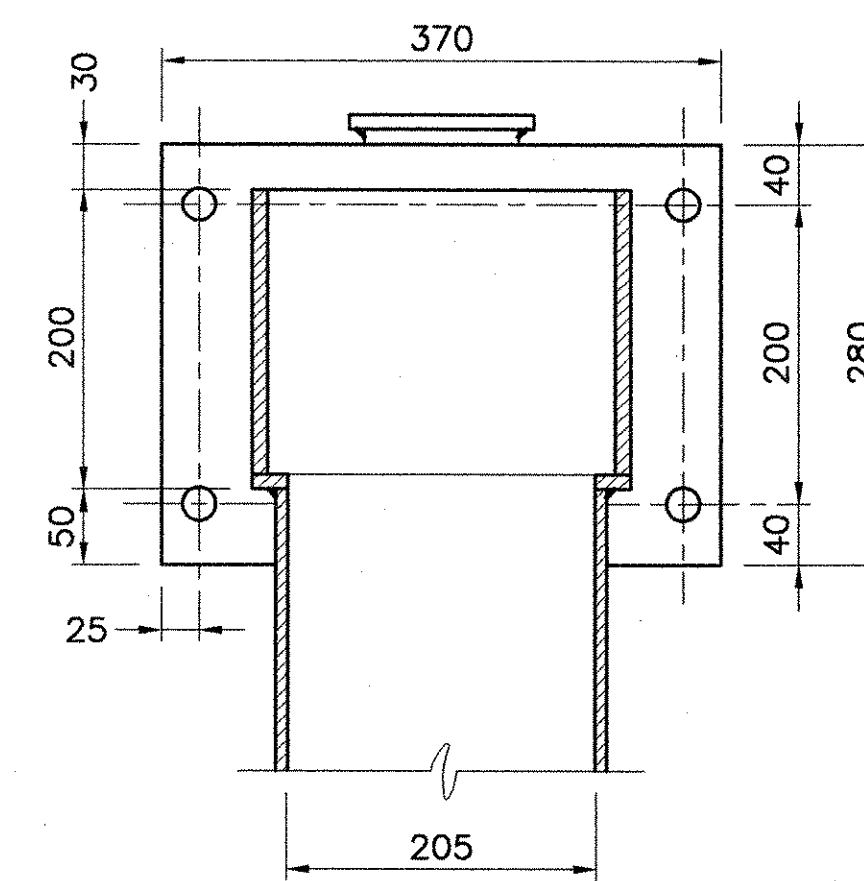
TYPICAL DOWNSPOUT DETAIL
SCALE 1:10

DOWNSPOUT NOTES

- HOLLOW STRUCTURAL STEEL TUBING SHALL CONFORM TO ASTM A-500 GRADE C.
- ALL BARS SHALL CONFORM TO AASHTO M270 GRADE 345 MP_a AND SHALL BE GALVANIZED.
- DOWNSPOUT SHALL BE GALVANIZED IN ACCORDANCE WITH SUBSECTION 506.15(a) OF 2001 STANDARD SPECIFICATION AFTER FABRICATION.
- ALL DOWNSPOUT BOLTS AND RELATED HARDWARE SHALL BE ASTM F568M, CLASS 4.6 AND SHALL BE GALVANIZED IN ACCORDANCE WITH ASTM A-153 (AASHTO M232).
- ANY PLACE WHERE THE GALVANIZING HAS BEEN REMOVED FROM THE DOWNSPOUT OR BRACKET EITHER BY CUTTING, BURNING, WELDING, PLACING, OR ANY OTHER MEANS, SHALL BE REPAIRED PER ASTM A780.
- DOWNSPOUT SHALL BE PAID FOR UNDER THE BRIDGE EXPANSION JOINT, ITEM 516.10

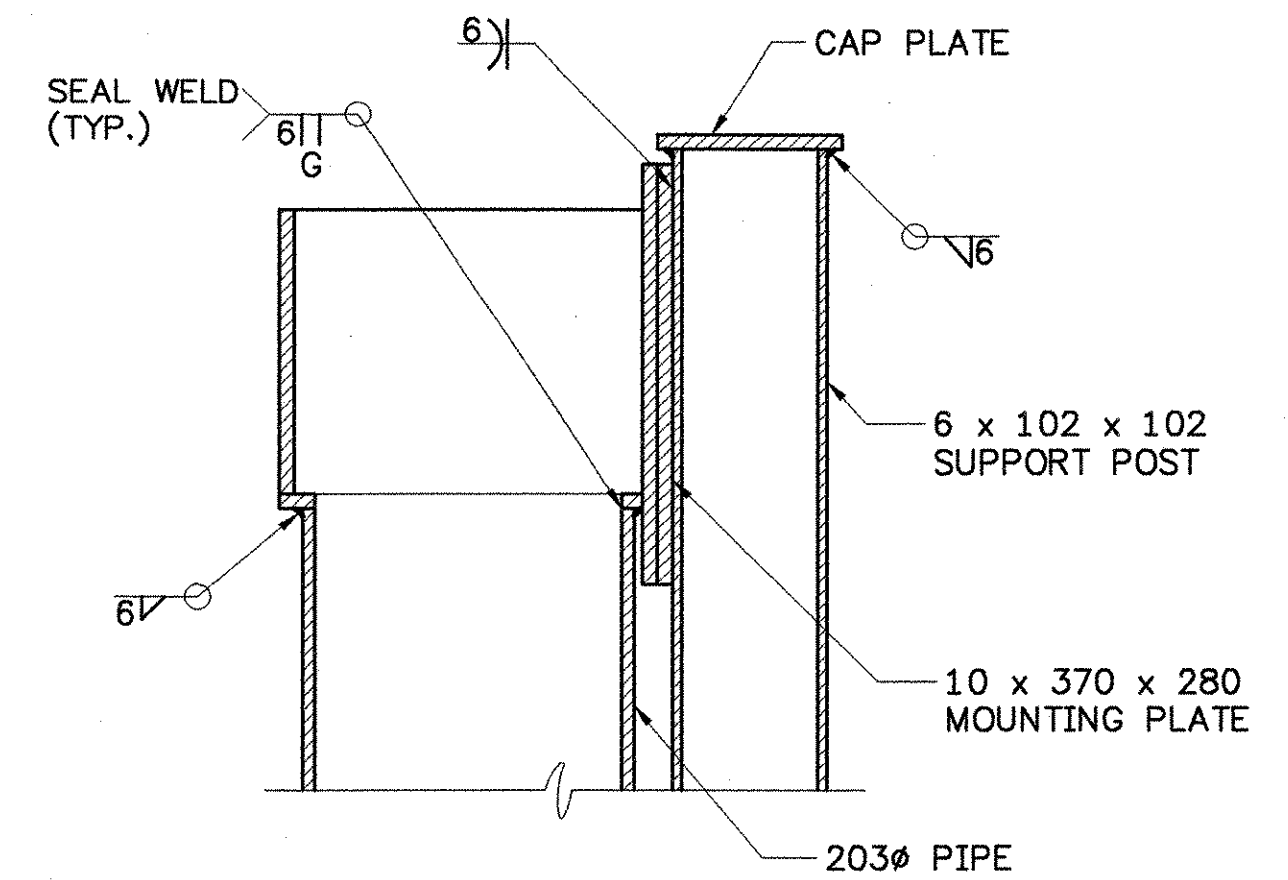


PLAN VIEW OF HOPPER
SCALE 1:5

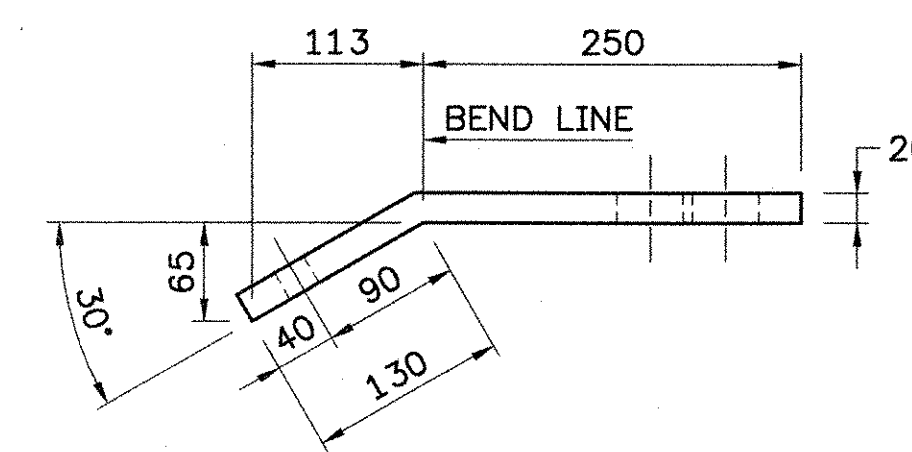


SECTION B-B
SCALE 1:5

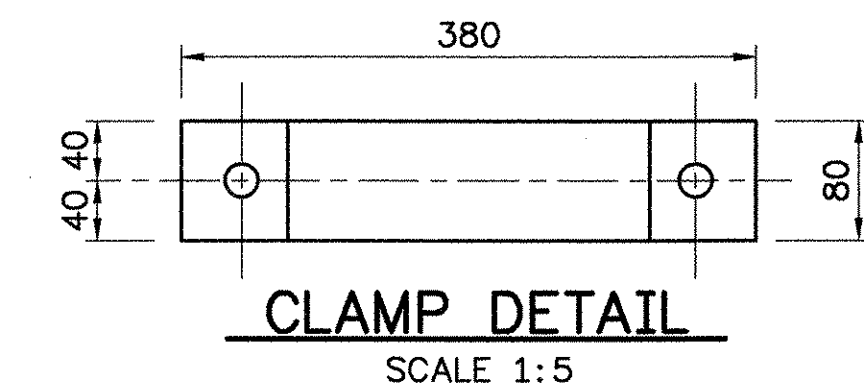
NOTE:
ALL HOPPER PLATES 10



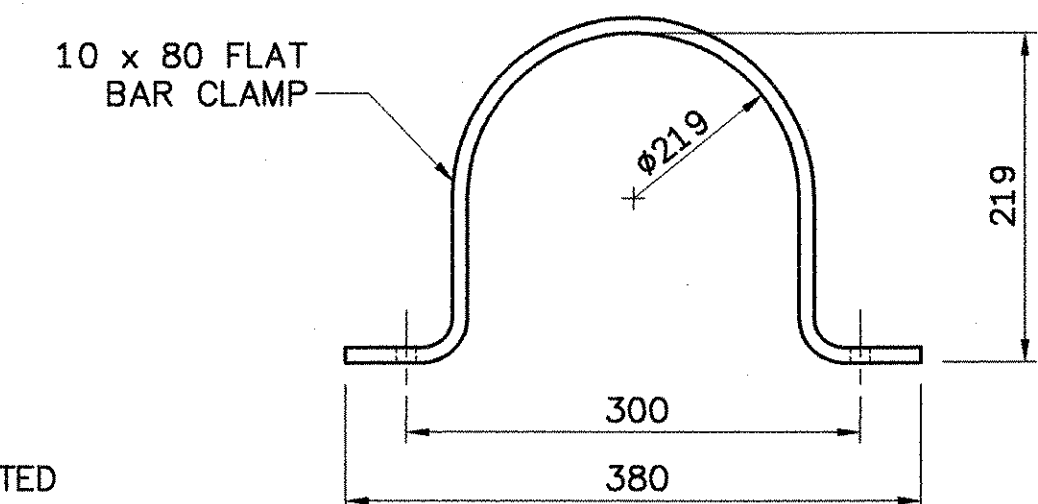
SECTION A-A
SCALE 1:5



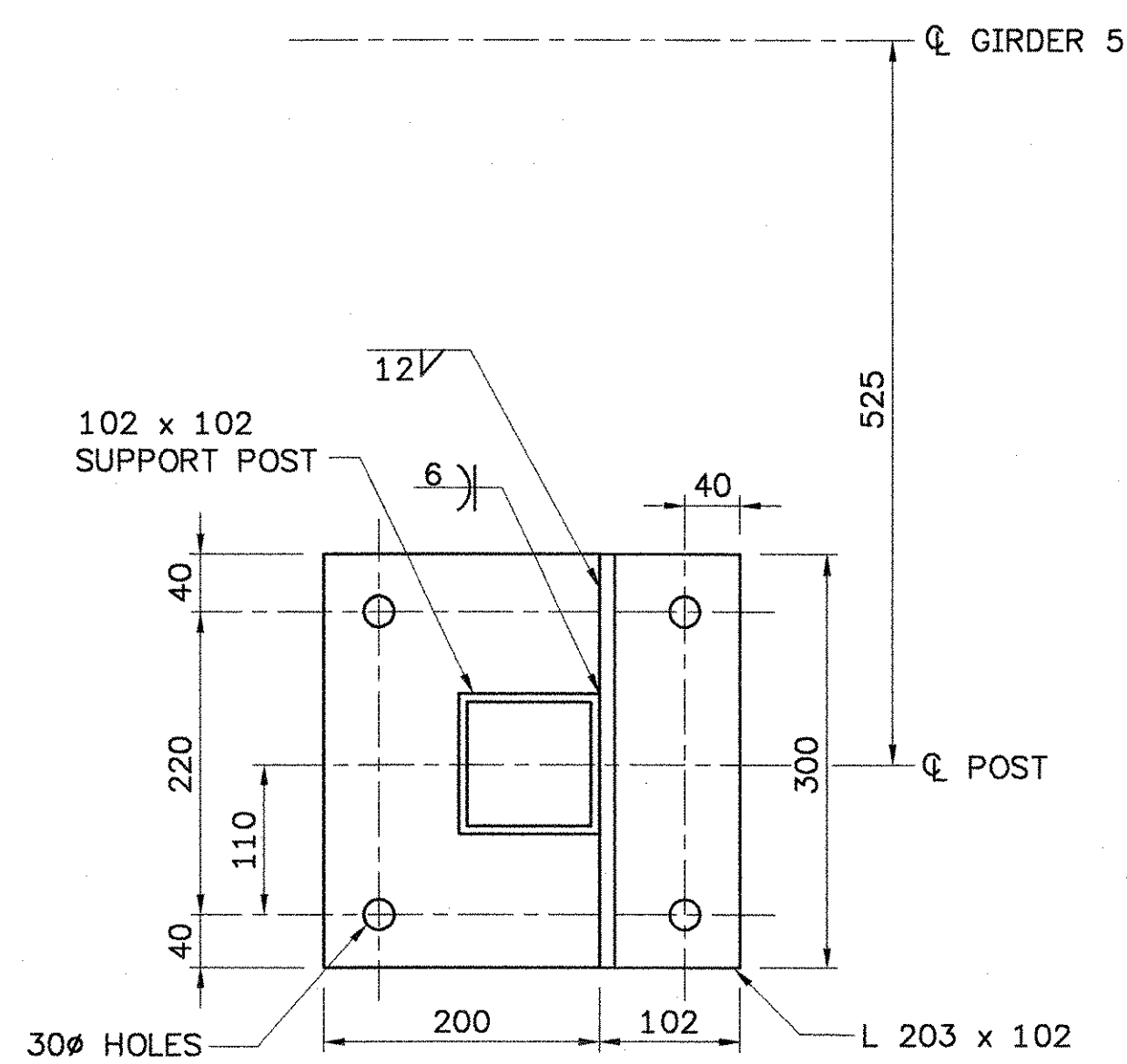
**PIER DOWNSPOUT SUPPORT
PLATE ELEVATION**
SCALE 1:5



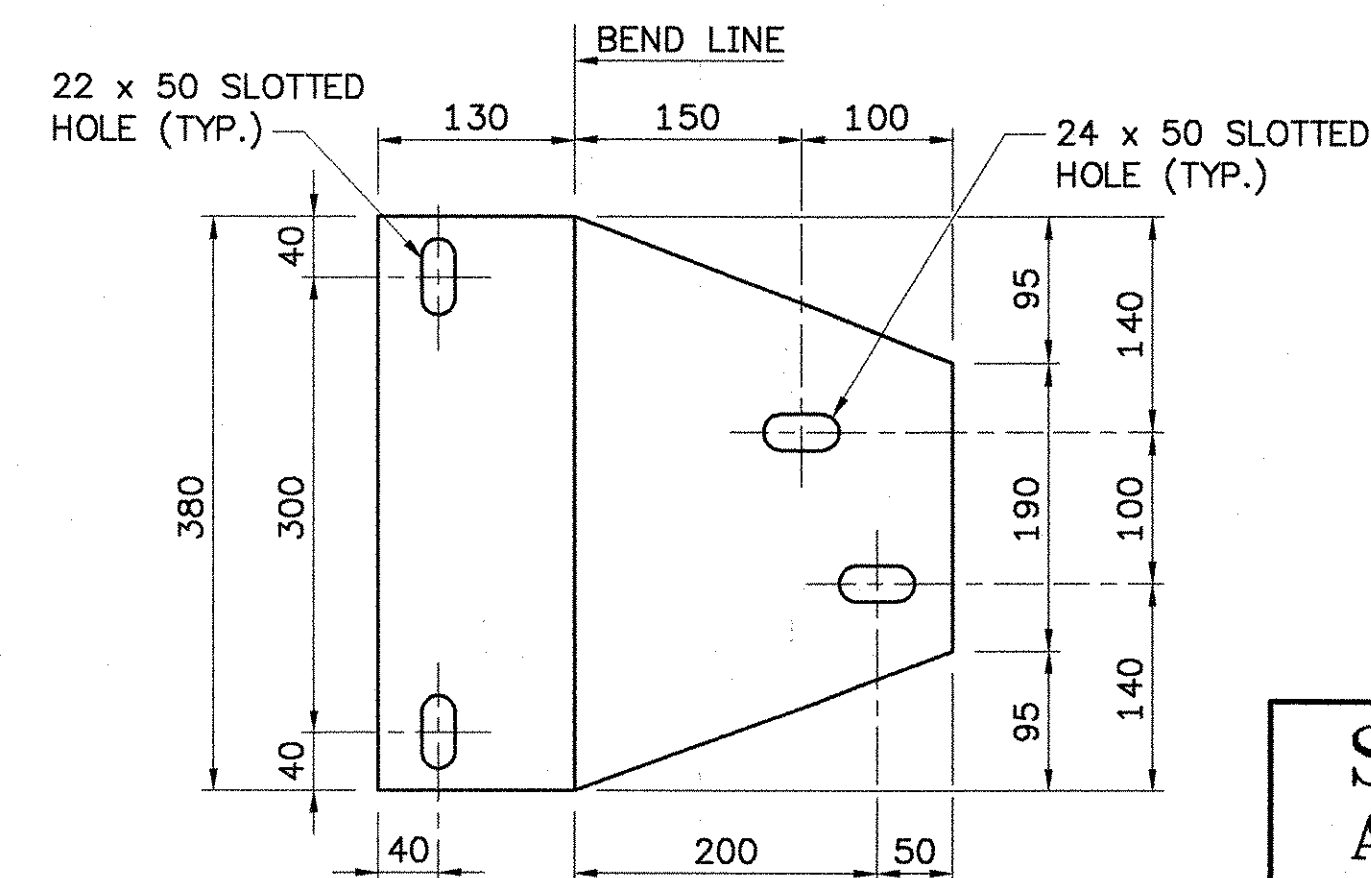
CLAMP DETAIL
SCALE 1:5



CLAMP ELEVATION
SCALE 1:5



POST AND BASE PLATE
SCALE 1:5



**PIER DOWNSPOUT SUPPORT
PLATE PLAN**
SCALE 1:5

STATE OF VERMONT AGENCY OF TRANSPORTATION			
Town Of	JAMAICA	Bridge No.	80
Highway No.	VT. ROUTE 100	Log Sta.	
		Surv. Sta.	
VT. ROUTE 100 OVER THE WEST RIVER			
DOWNSPOUT DETAILS			
Designed By	JH/LKP	Drawn By.	MWS
Checked By	Date	Bridge Design Supervisor	
LMM	2/02	LMM	Date 2/02
PROJECT	JAMAICA	PROJECT NO.	BRF 013-1 (8)
I.G.C. Info.			
Bridge Sheet No.			Sheet 82 Of 116