

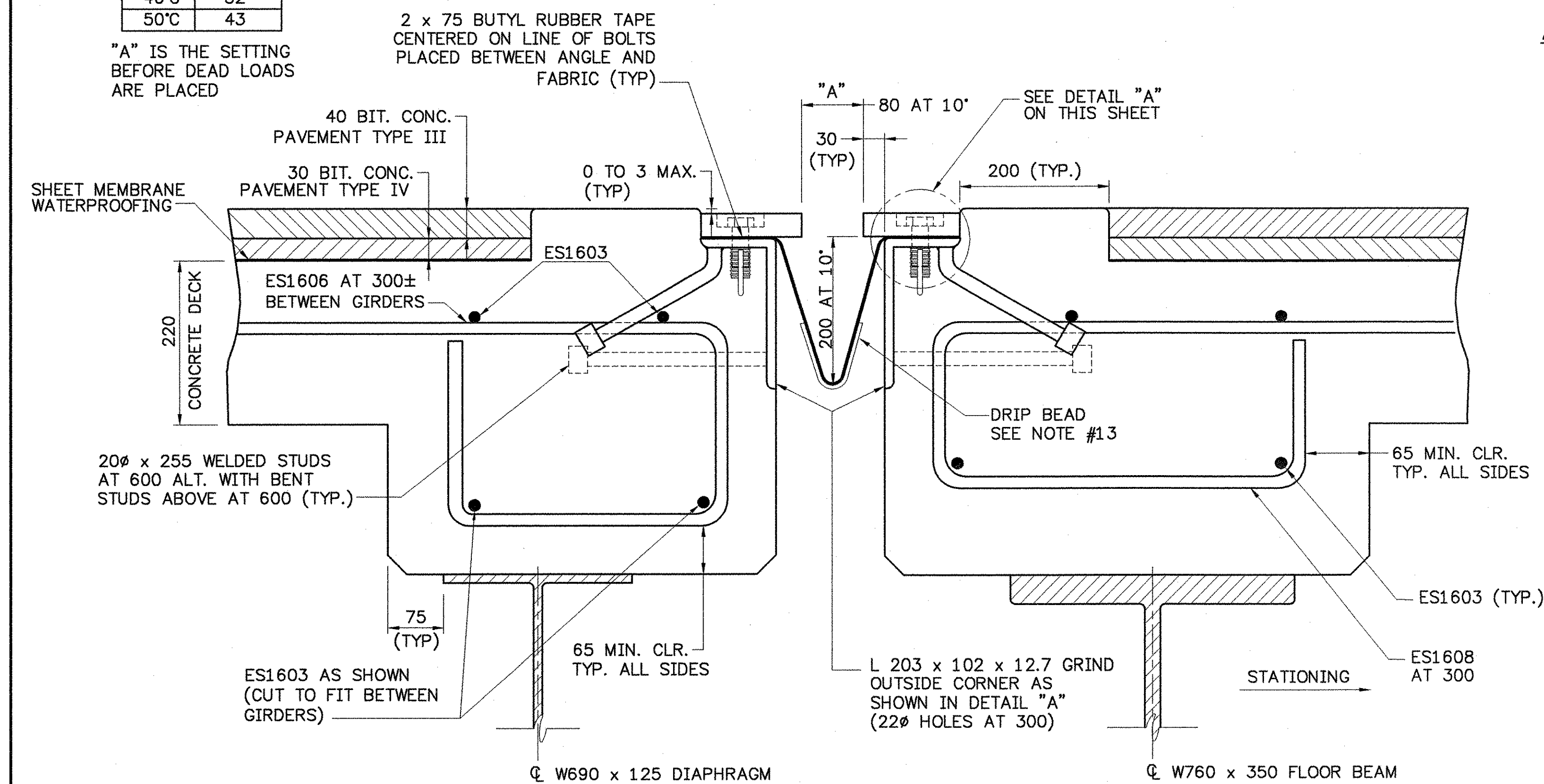
TYPICAL SECTION AT GIRDERS AT PIER

SCALE 1:5

TEMP	"A" DIST
-30°C	117
-20°C	108
-10°C	99
0°C	89
10°C	80
20°C	71
30°C	61
40°C	52
50°C	43

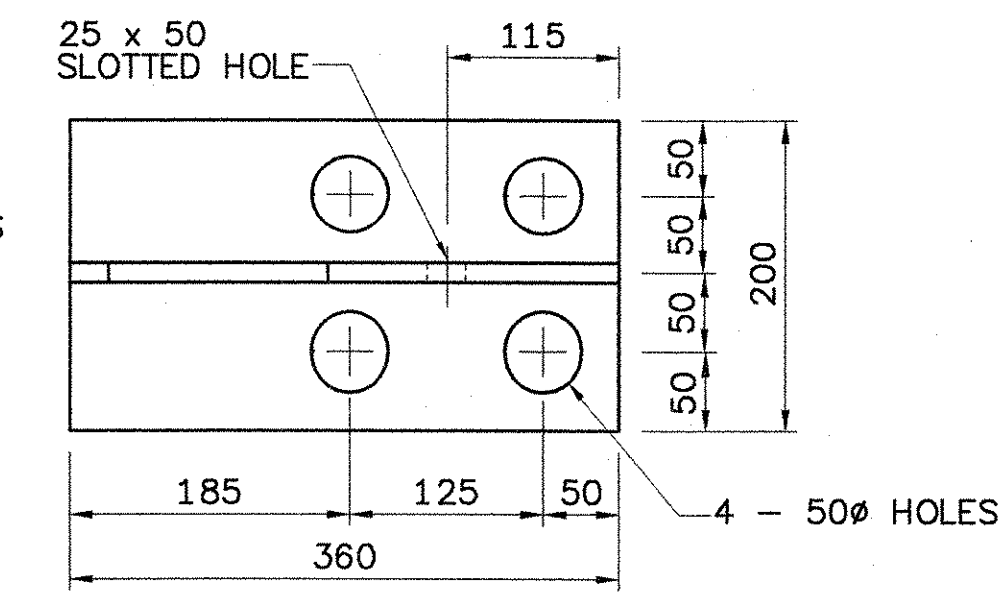
"A" IS THE SETTING BEFORE DEAD LOADS ARE PLACED

2 x 75 BUTYL RUBBER TAPE CENTERED ON LINE OF BOLTS PLACED BETWEEN ANGLE AND FABRIC (TYP)



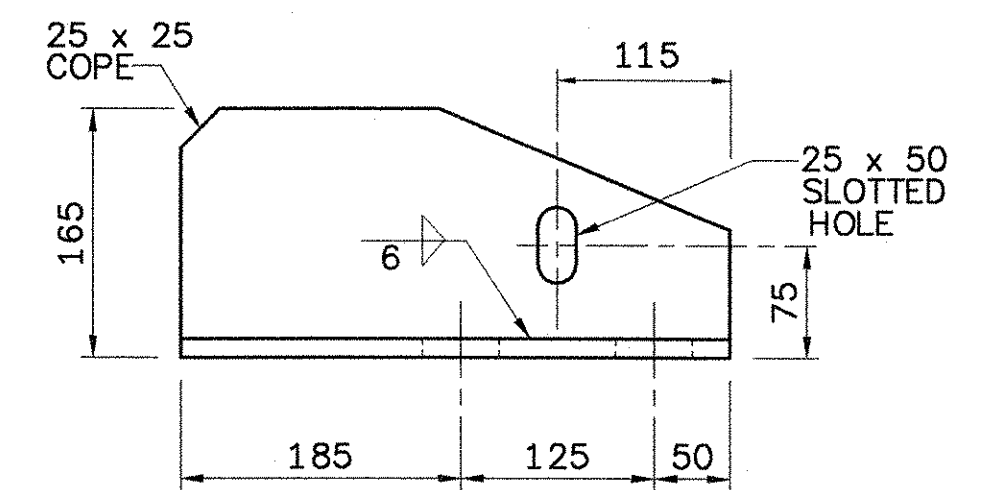
TYPICAL SECTION BETWEEN GIRDERS AT PIER

SCALE 1:5 (NORMAL TO Q BRG.)



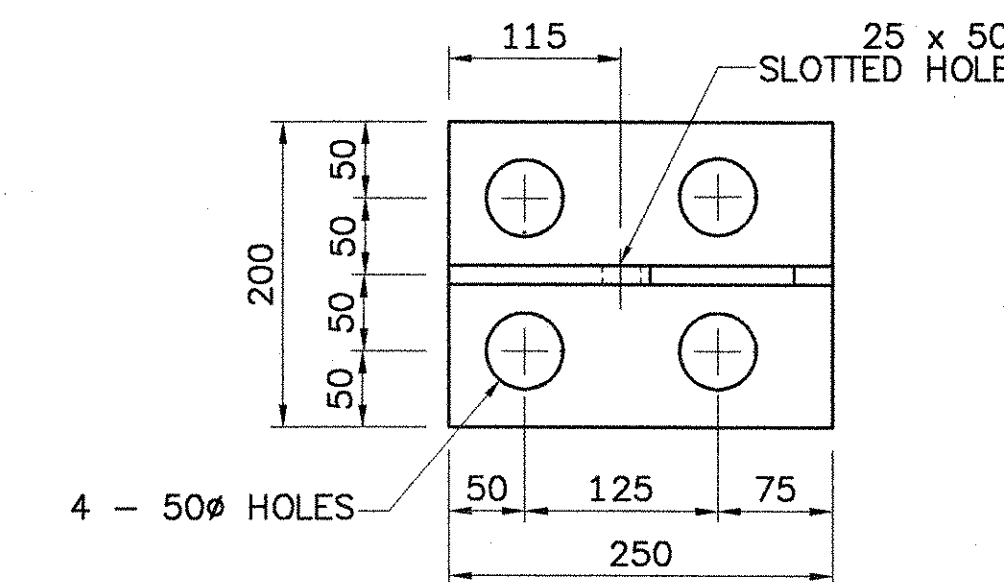
TRUSS BRACKET PLAN

SCALE 1:5



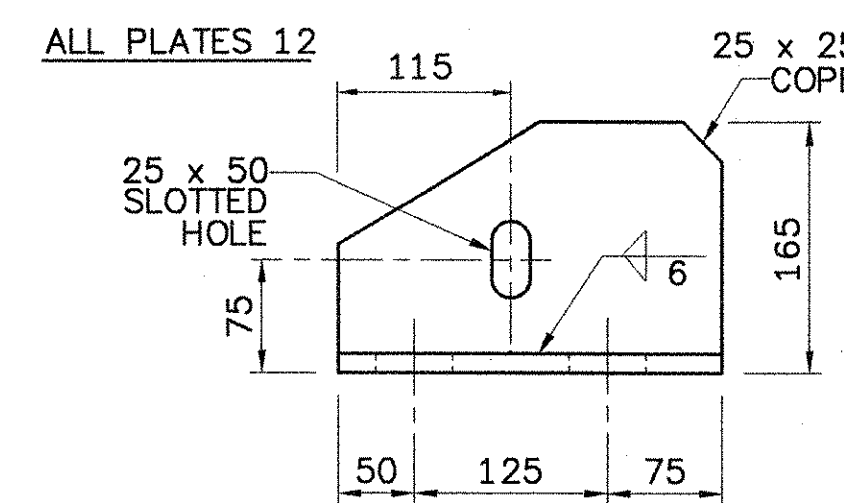
TRUSS BRACKET ELEVATION

SCALE 1:5



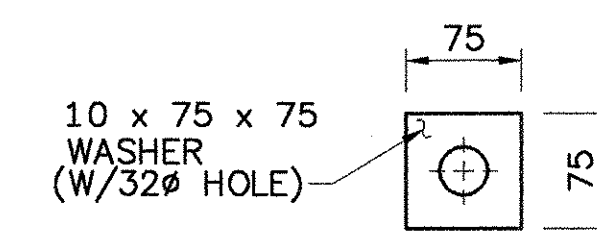
APPROACH BRACKET PLAN

SCALE 1:5



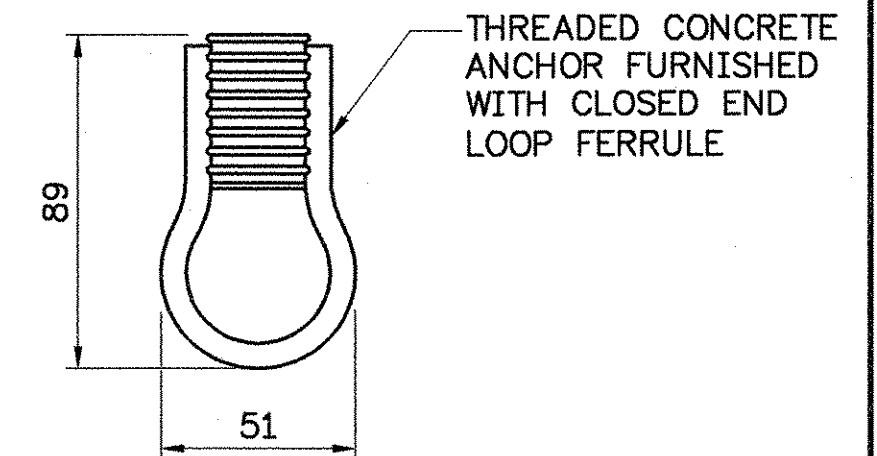
APPROACH BRACKET ELEVATION

SCALE 1:5



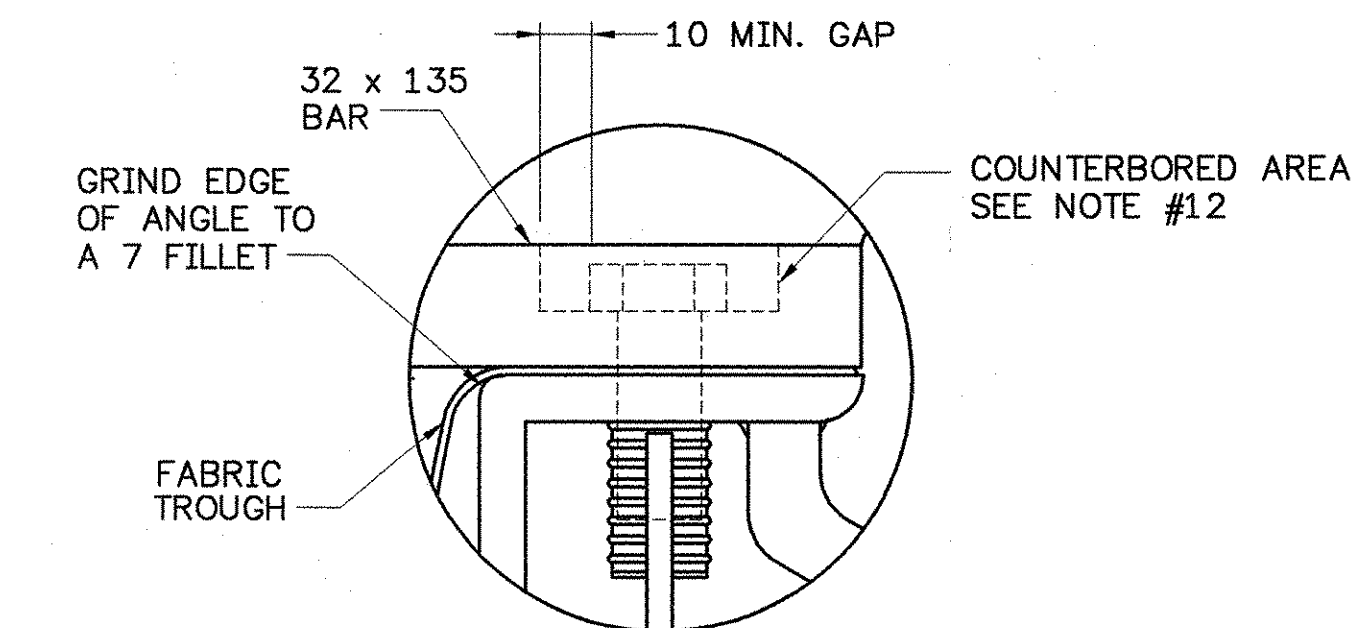
WASHERS FOR BRACKETS

SCALE 1:5



10 x 89 CLOSED END LOOP FERRULE DETAIL

NOT TO SCALE



DETAIL "A"

N.T.S.

540 Commercial St.
Manchester, NH 03101
PH: (603) 688-8223
FAX: (603) 688-8802
E-MAIL: CLD@CLDENGINEERS.COM

EXPANSION JOINT NOTES

1. DETAILS ON THIS SHEET ARE FOR ITEM 516.10 "BRIDGE EXPANSION JOINT".
2. PREFORMED FABRIC TROUGH MATERIAL SHALL BE CONTINUOUS AND SHALL CONFORM TO SUBSECTION 707.07 OF THE 2001 STANDARD SPECIFICATIONS.
3. BUTYL RUBBER TAPE SHALL CONFORM TO AASHTO SPECIFICATION M-198, TYPE II.
4. THE FINAL FINISH OF THE EXPANSION DEVICE SHALL BE COVERED DURING THE PLACING OF BRIDGE DECK CONCRETE.
5. ALL STEEL COMPONENTS EXCEPT DOWN SPOUT SHALL BE AASHTO M270M GRADE 345 GALVANIZED OR METALIZED AS PER SUBSECTION 506.15 (a) OR (b) OF THE 2001 STANDARD SPECIFICATIONS UNLESS OTHERWISE NOTED. THREADED RODS SHALL BE ASTM A568M, GRADE 345; NUTS, AASHTO M291M (ASTM A563M); AND WASHERS, ASTM F436M.
6. THE ITEM "BRIDGE EXPANSION JOINT" SHALL INCLUDE THE FABRICATION AND ERECTION OF THE COMPLETE JOINT ASSEMBLY INCLUDING ALL STEEL PLATES, BRACKETS, ANGLES, WELDED STUDS OR RODS, PREFORMED FABRIC DRAIN TROUGH MATERIAL AND PLASTIC DRAIN TUBES, BUTYL RUBBER TAPE AND ANY OTHER MISCELLANEOUS MATERIAL NECESSARY TO INSTALL JOINT. DOWNSPOUT SHALL BE PAID FOR UNDER THE BRIDGE EXPANSION JOINT, ITEM 516.10.
7. THE 203 x 102 x 12.7 ANGLES SHALL BE FURNISHED AS ONE CONTINUOUS PIECE.
8. THE 32 x 135 BARS EACH SIDE OF THE JOINT SHALL BE PROVIDED IN TWO EQUAL LENGTHS EACH SIDE OF JOINT.
9. THE 32 x 135 BARS SHALL BE REMOVED AND REPLACED AFTER CONCRETE IS PLACED TO ENSURE THE BARS CAN BE REMOVED FOR MAINTENANCE AT A FUTURE DATE.
10. COAT CONCRETE CONTACT SURFACES WITH AN EPOXY BONDING COMPOUND MEETING THE REQUIREMENTS OF SUBSECTION 719.02 OF THE 1995 STANDARD SPECIFICATIONS. PAYMENT SHALL BE INCLUDED IN THE UNIT PRICE BID FOR ITEM 516.10 "BRIDGE EXPANSION JOINT".
11. A 25 DIAMETER PLASTIC DRAIN TUBE (PER STD. SPEC. 740.01) SHALL BE INSTALLED AS SHOWN AT THE FACE OF CURB ON BOTH SIDES. THE UPPER END IS TO BE PLUGGED WITH STEEL WOOL AND THE LOWER END IS TO EXTEND BELOW THE BOTTOM OF THE ADJACENT GIRDER OR BOTTOM TRUSS CHORD. THE DRAIN TUBES SHALL BE FASTENED TO THE GIRDERS OR BOTTOM CHORDS USING A METHOD APPROVED BY THE ENGINEER.
12. FILL COUNTER BORED HOLES WITH HOT POURED JOINT SEALER (PER STD. SPEC. 707.06) AFTER BOLT INSTALLATION. PAYMENT FOR THE WORK SHALL BE SUBSIDIARY TO BRIDGE EXPANSION JOINT, ITEM 516.10.
13. A DRIP BEAD OF 13 WIDE x 225 LONG STRIP OF 3 PLY PREFORMED FABRIC DRAIN TROUGH MATERIAL SHALL BE CEMENTED TO THE BOTTOM OF THE FABRIC TROUGH USING AN ADHESIVE APPROVED BY THE FABRIC MANUFACTURER. THE DRIP BEAD SHALL BE APPLIED 25 FROM THE DOWN SPOUT END OF THE FABRIC TROUGH.
14. FABRIC TROUGH SHALL BE THOROUGHLY CLEANED AND FLUSHED AFTER PAVING OPERATION.
15. THE EXPANSION JOINT SHALL BE SHOP ASSEMBLED AND SHIPPED AS ONE UNIT.
16. PAYMENT FOR THE CURB EXPANSION PLATE ASSEMBLY, COMPLETE IN PLACE, SHALL BE UNDER BRIDGE EXPANSION JOINT, ITEM 516.10.

STATE OF VERMONT AGENCY OF TRANSPORTATION

Town Of	JAMAICA	Bridge No.	80
Highway No.	VT. ROUTE 100	Log Sta.	
		Surv. Sta.	
VT. ROUTE 100 OVER THE WEST RIVER			
EXPANSION JOINT DETAILS			
Designed By	JH/LKP	Drawn By.	MWS
Checked By	Date	Bridge Design Supervisor	
LMM	2/02	LMM	Date 2/02
PROJECT	JAMAICA	PROJECT NO.	BRF 013-1 (8)
I.G.C. Info.			
Bridge Sheet No.		Sheet	81 Of 116