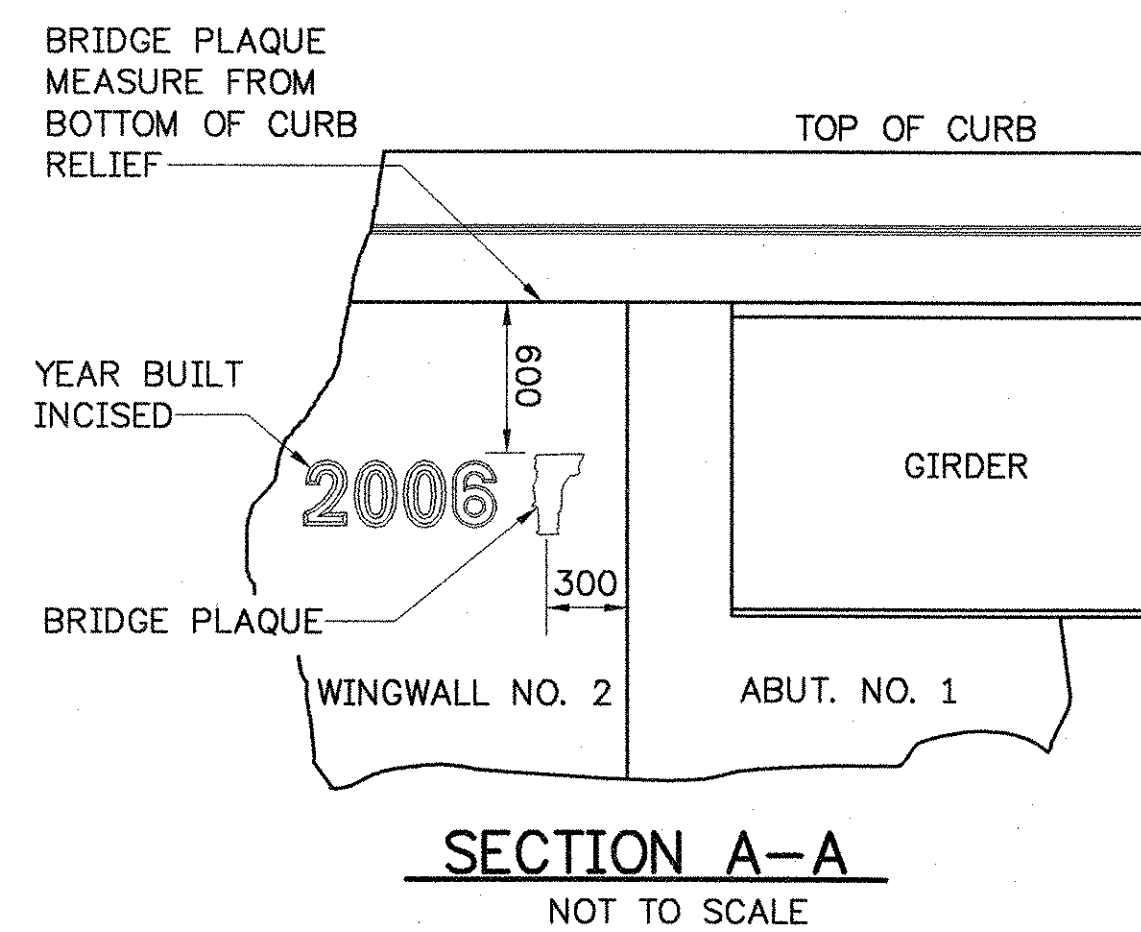


LOCATE BRIDGE PLAQUE



LOCATE BRIDGE PLAQUE

THE BRIDGE PLAQUE WILL BE SUPPLIED BY THE AGENCY OF TRANSPORTATION AND SHALL BE INSTALLED BY THE CONTRACTOR AT ABUTMENT NO. 1 ON THE RIGHT SIDE AS SHOWN OR AS DIRECTED BY THE ENGINEER.

THE YEAR BUILT SHALL BE INCISED TO LOOK LIKE CHISLED ENGRAVED NUMBERS.

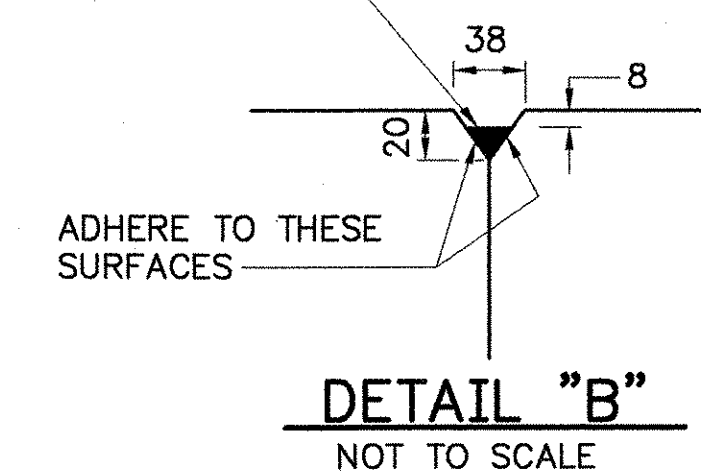
EACH OF THE NUMBERS FOR THE YEAR BUILT SHALL BE 250 mm HIGH AS SHOWN. EACH NUMBER SHALL BE INSET INTO THE CONCRETE BY 15 mm WITH THE SIDES BEING SLOPED BY 10 mm.

THE NUMBERS SHALL BE HORIZONTALLY CENTERED WITH THE BRIDGE PLAQUE

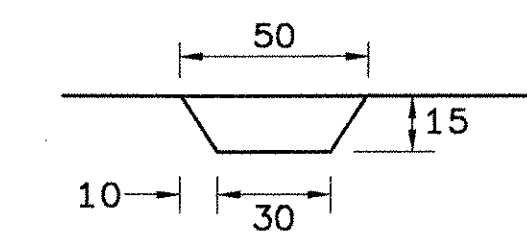
NOTES

- TWO COATS OF POLYURETHANE MEMBRANE SHALL BE PLACED 100 WIDE ALONG DECK, 80 UP FACE OF CURB AND ALONG CONCRETE SHOULDER AT EXPANSION JOINTS. SEE SPEC. 519.05(B) OF THE 2001 STANDARD SPECIFICATIONS.
- BLAST CLEAN 900 FROM FACE OF CURB AND 80 UP CURB FACE PRIOR TO PLACING MEMBRANE.
- SHEET MEMBRANE WATERPROOFING (MOD. TORCH APPLIED) SHALL EXTEND FROM FACE OF CURB TO FACE OF CURB.
- POLYURETHANE MEMBRANE AND BLAST CLEANING SHALL BE INCLUDED IN THE UNIT PRICE BID FOR SHEET MEMBRANE WATERPROOFING (MOD. TORCH APPLIED).
- CONSTRUCTION JOINTS THROUGH CONCRETE CURBS SHALL BE SPACED MAXIMUM 4600 CENTER TO CENTER AND SHALL BE 450 MINIMUM FROM THE CENTER OF THE NEAREST BRIDGE RAIL POST. CONCRETE SHALL BE PLACED IN ALTERNATING SECTIONS WITH A MINIMUM OF 48 HOURS DELAY BETWEEN ADJACENT PLACEMENTS.
- LONGITUDINAL REINFORCING SHALL PASS THROUGH CONCRETE CURB CONSTRUCTION JOINTS.

POLYURETHANE JOINT SEALER PER SUBSECTION 524.06 (C) COLOR TO MATCH CONCRETE. COST TO BE INCLUDED IN THE UNIT PRICE BID FOR CONCRETE.

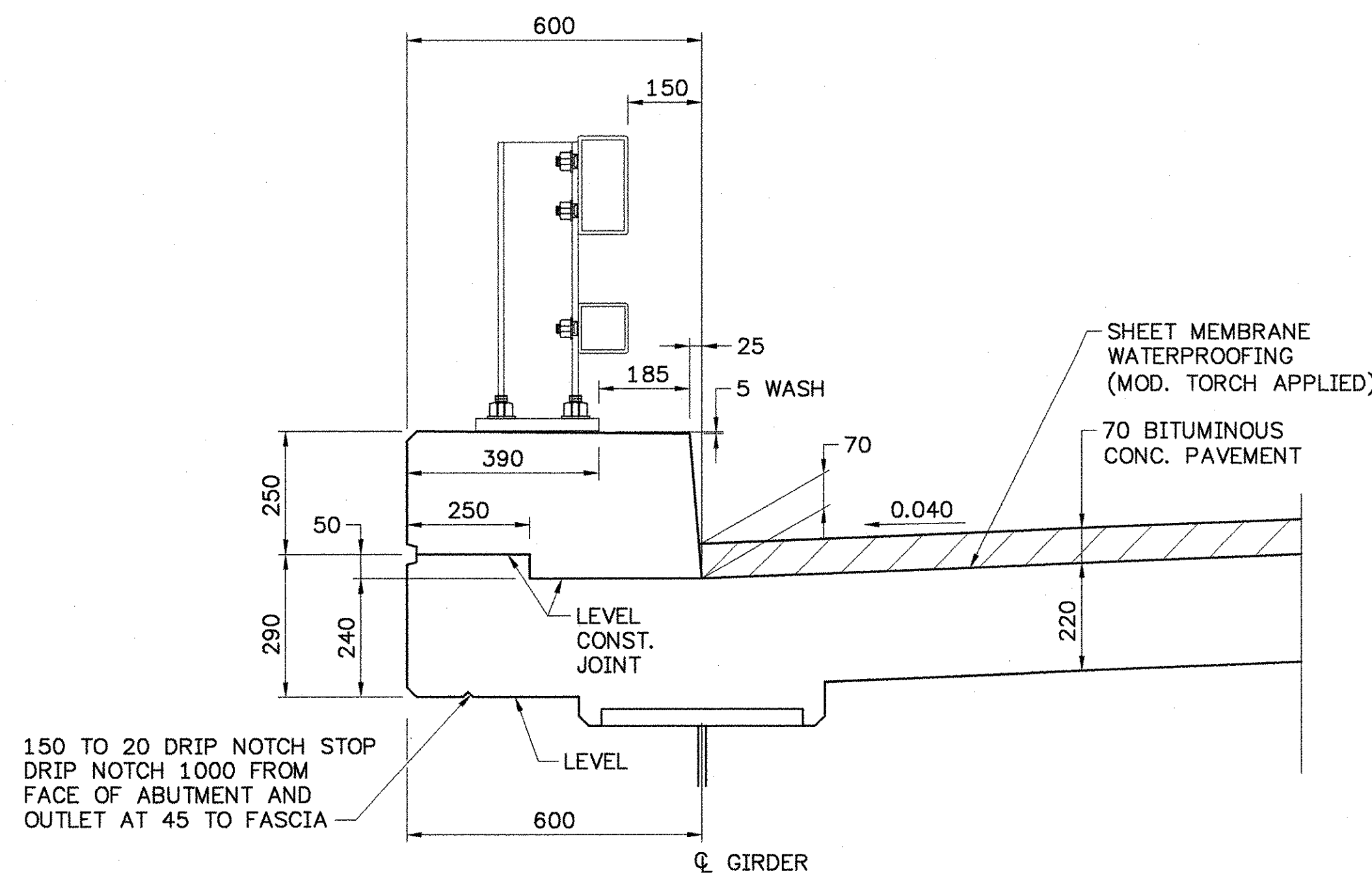


DETAIL "B"
NOT TO SCALE



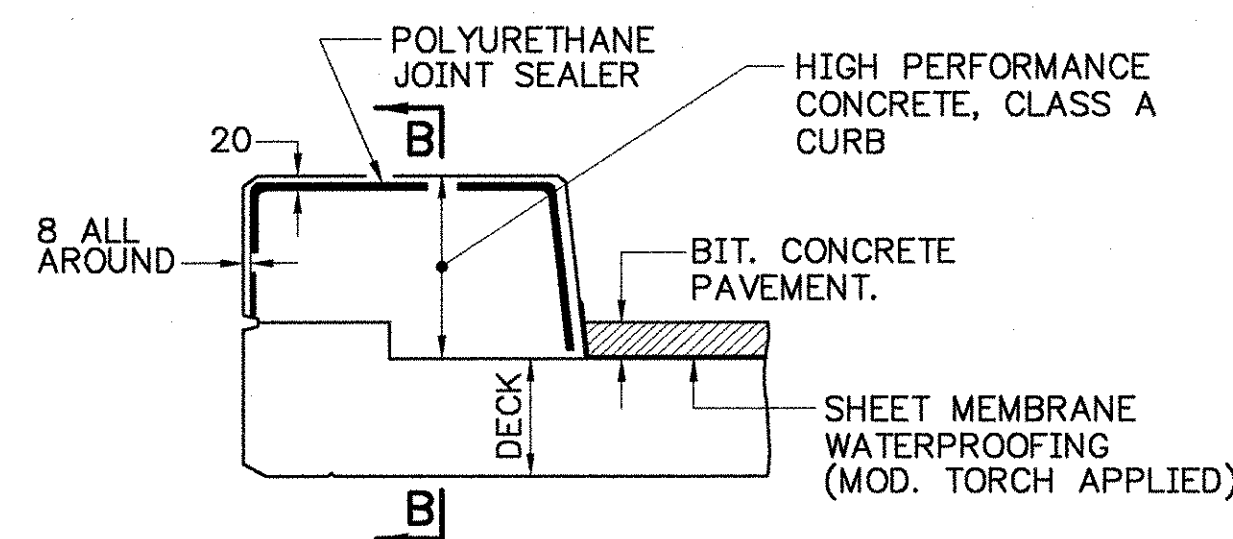
TYPICAL CROSS SECTION OF NUMBER

SCALE 1:2



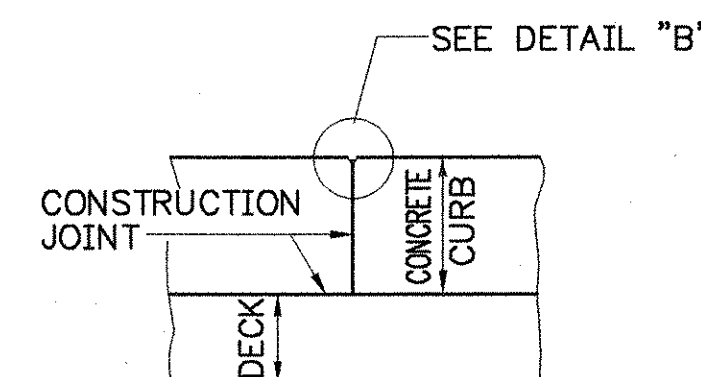
TYPICAL CURB SECTION

SCALE 1:10



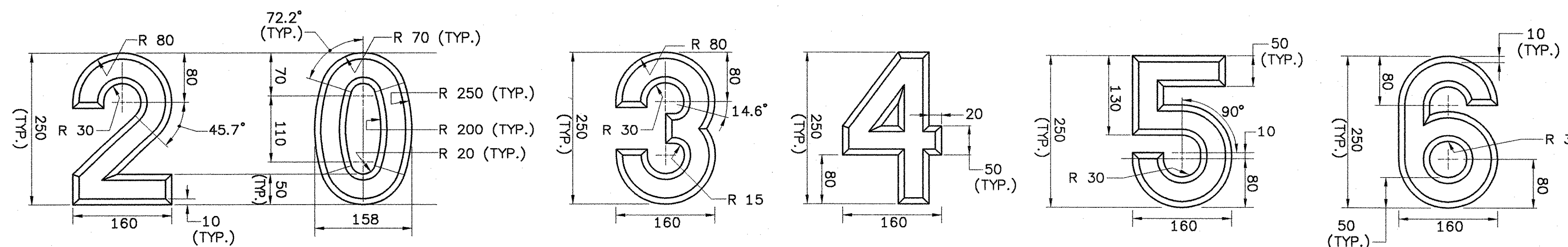
TYPICAL SECTION THROUGH CONCRETE CURB CONSTRUCTION JOINT

NOT TO SCALE



SECTION B-B

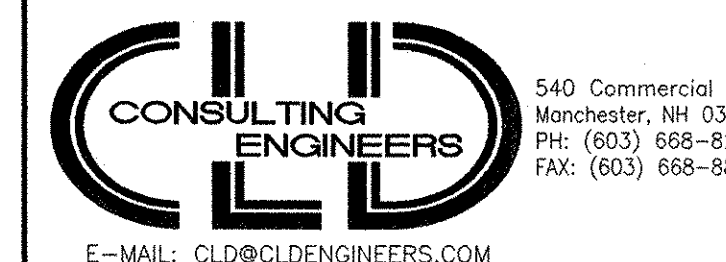
NOT TO SCALE



SPACE BETWEEN NUMBERS = 30

NUMBER DIMENSIONS

SCALE 1:5



STATE OF VERMONT AGENCY OF TRANSPORTATION		
Town Of	JAMAICA	Bridge No. 80
Highway No.	VT. ROUTE 100	Log Sta.
		Surv. Sta.
VT. ROUTE 100 OVER THE WEST RIVER		
CURB DETAILS		
Designed By	JH	Drawn By. MWS
Checked By	RMR	Bridge Design Supervisor LMM
	2/02	Date 2/02
PROJECT	JAMAICA	PROJECT NO. BRF013-1 (8)
I.G.C. Info.		
Bridge Sheet No.		Sheet 79 Of 116