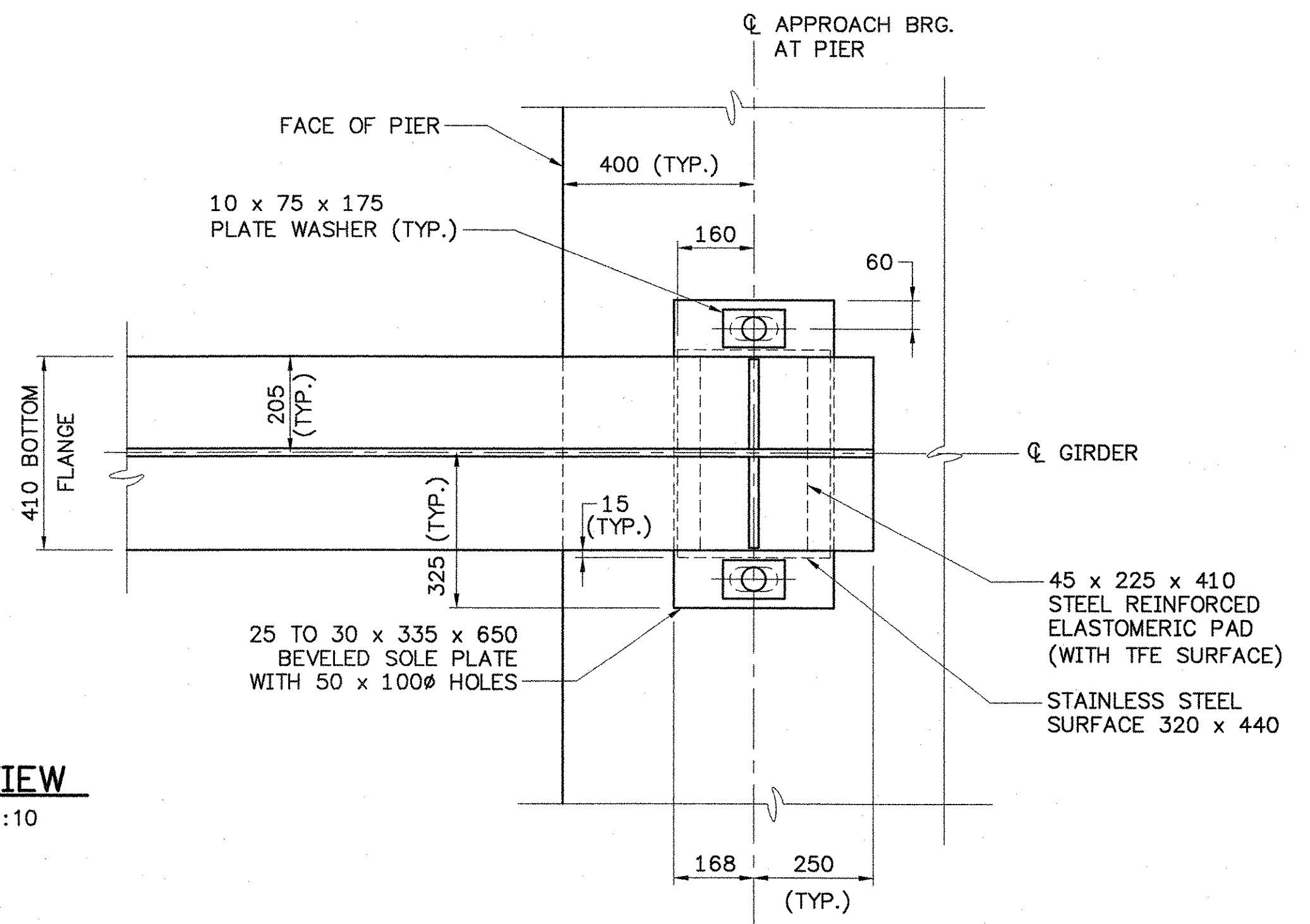


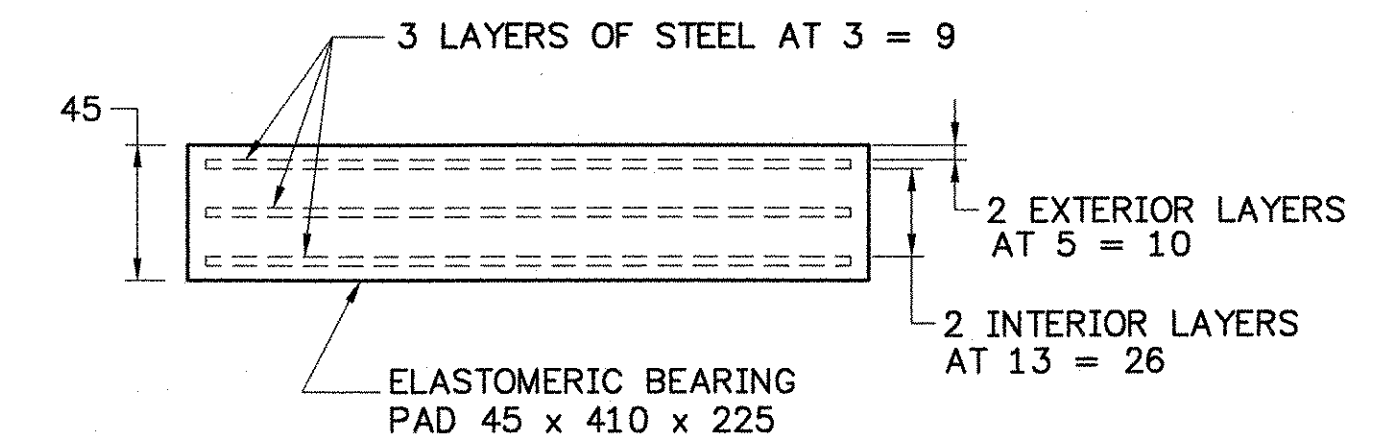
**PLAN VIEW**  
SCALE 1:10



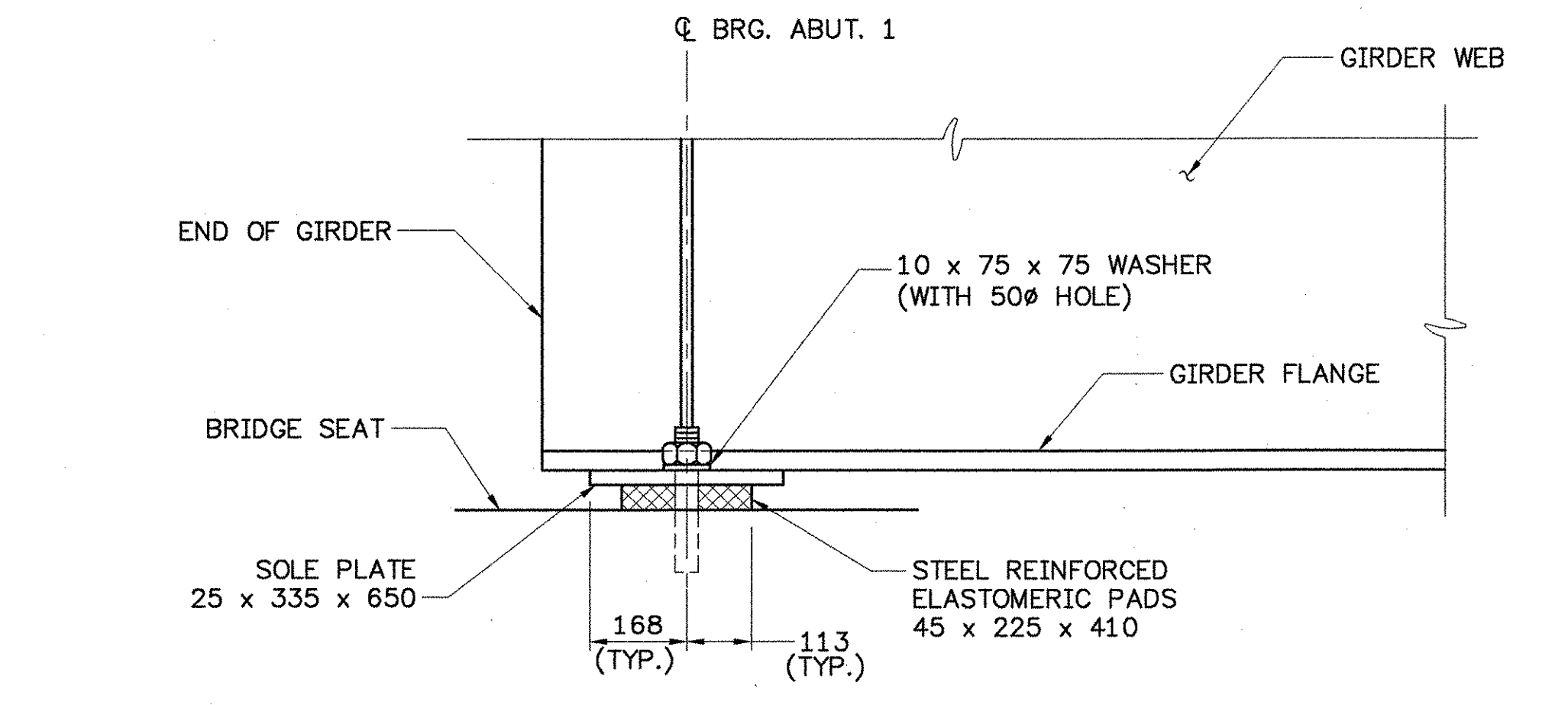
**PLAN VIEW**  
SCALE 1:10

**BEARING NOTES**

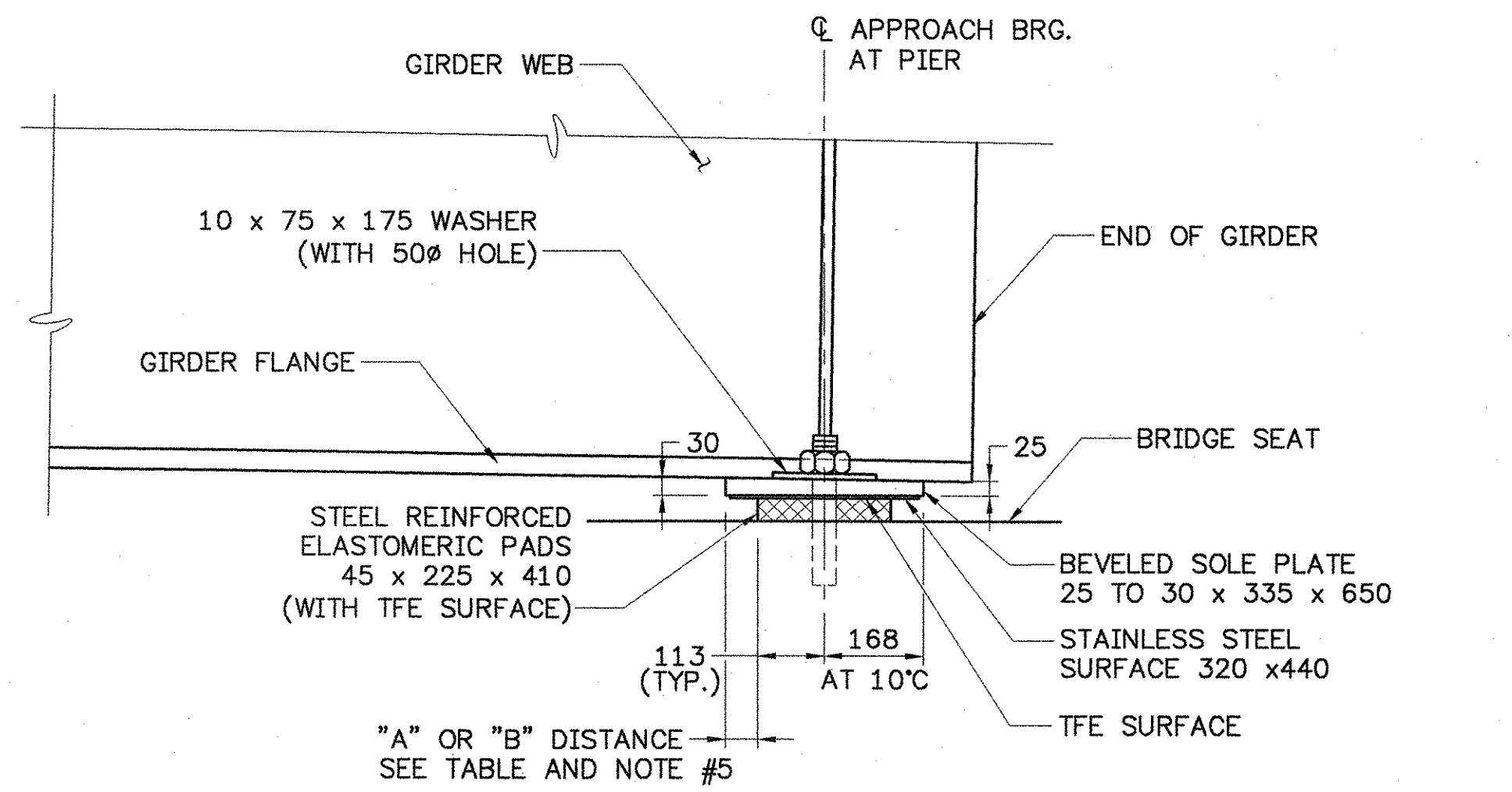
- BEARINGS SHALL BE STEEL REINFORCED ELASTOMERIC BEARING PADS WITH STEEL SOLE PLATES CONFORMING TO AASHTO STANDARD SPECIFICATIONS FOR HIGHWAY BRIDGES, 17TH EDITION, AND ITS LATEST REVISIONS.
- BEARINGS SHALL BE PAID FOR UNDER THE ITEM 531.11 "BEARING DEVICE ASSEMBLY (APPROACH)".
- SHOP DRAWINGS CONFORMING TO SUBSECTION 531.03 OF THE 1995 STANDARD SPECIFICATIONS SHALL BE SUBMITTED TO INCLUDE WELDING AND BONDING PROCEDURES.
- THE CONCRETE SURFACE UNDER THE BEARING DEVICE SHALL BE LEVEL.
- "A" DISTANCE IS THE FINAL SETTING FOR THE BEARING AFTER THE CONCRETE SLAB, CURB, PAVEMENT AND BRIDGE RAIL ARE PLACED. "B" DISTANCE IS LISTED FOR SETTING THE BEARING AFTER THE STRUCTURAL STEEL IS ERECTED AND BEFORE THE CONCRETE DECK IS POURED. THE DIFFERENCE IS THE THEORETICAL ELONGATION OF THE BOTTOM FLANGE DUE TO THE DEAD LOAD DEFLECTION. THE FINAL "A" DISTANCE, AS SHOWN IN THE TABLE, MUST BE ATTAINED WITHIN 3.00.
- DESIGN CRITERIA:
  - AVERAGE BEARING PRESSURE = 7.1 MPa
  - MINIMUM ALLOWABLE DESIGN ROTATION = 0.04 RADIAN
  - HORIZONTAL CAPACITY SHALL BE A MINIMUM OF 10% OF THE VERTICAL DESIGN LOAD (WITHOUT IMPACT).
  - DESIGN LOAD PER BEARING = 643.97 KN (DEAD LOAD PLUS LIVE LOAD WITHOUT IMPACT).
- ALL STEEL IN BEARING DEVICES (EXCEPT STAINLESS AND STEEL LAMINATIONS) SHALL BE AASHTO M270 GRADE 250. STEEL LAMINATIONS SHALL BE PER AASHTO M251 SPECIFICATIONS.
- ANCHOR BOLTS SHALL HAVE A MINIMUM OF 380 EMBEDMENT INTO THE CONCRETE AND SHALL CONFORM TO SUBSECTION 714.08 OF THE 2001 STANDARD SPECIFICATIONS FOR CONSTRUCTION AS MODIFIED BY THE GENERAL SPECIAL PROVISIONS FOR ALL PROJECTS.
- ALL BEARING DEVICES SHALL BE GALVANIZED OR METALIZED AS PER SUBSECTIONS 531.04(b) AND 506.15(a) & (b) OF THE 2001 STANDARD SPECIFICATIONS. AREAS OF GALVANIZING OR METALIZING DAMAGED BY FIELD WELDING OR HANDLING SHALL BE REPAIRED PER THE REQUIREMENTS OF SUPPLEMENTAL SPECIFICATION SECTION 513.
- ALL THE ANCHOR BOLTS, NUTS AND WASHERS SHALL BE GALVANIZED. ALL WASHERS SHALL BE 10 PLATE (MINIMUM). PAYMENT FOR ANCHOR BOLTS, NUTS AND WASHERS SHALL BE INCLUDED IN THE UNIT BID PRICE FOR ITEM 531.11 "BEARING DEVICE ASSEMBLY".



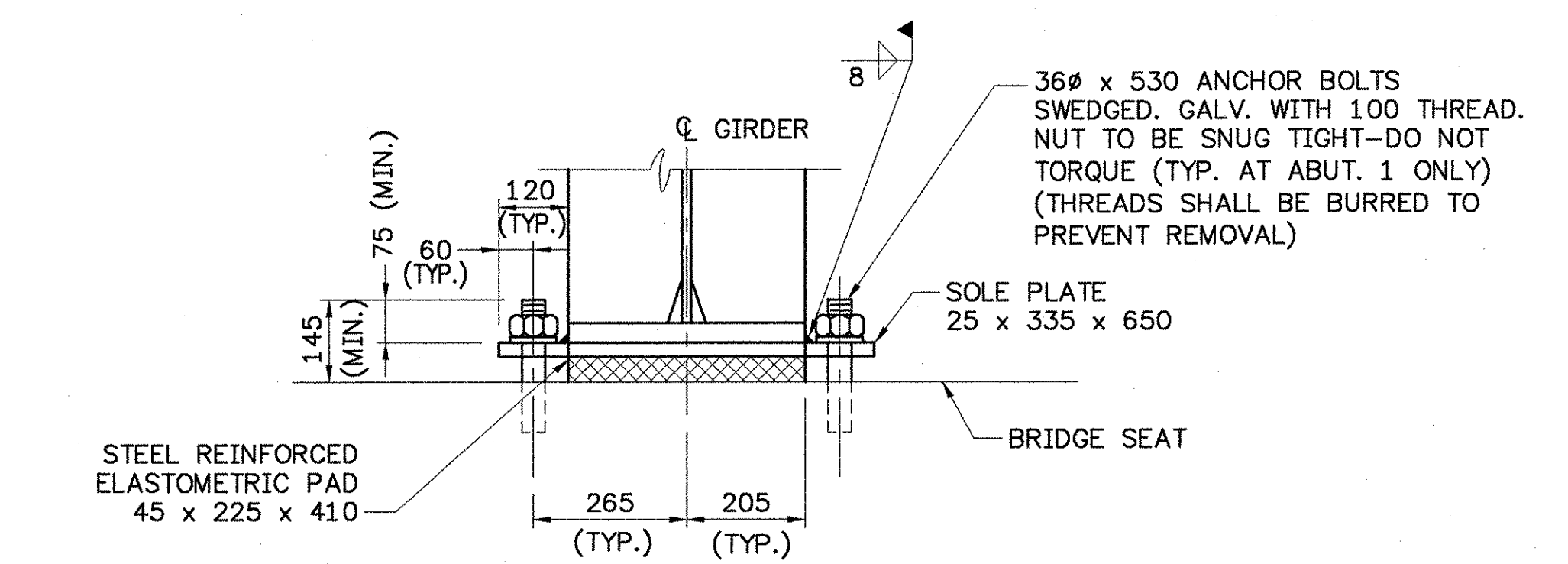
**STEEL REINFORCED ELASTOMERIC BEARING PAD**  
NOT TO SCALE



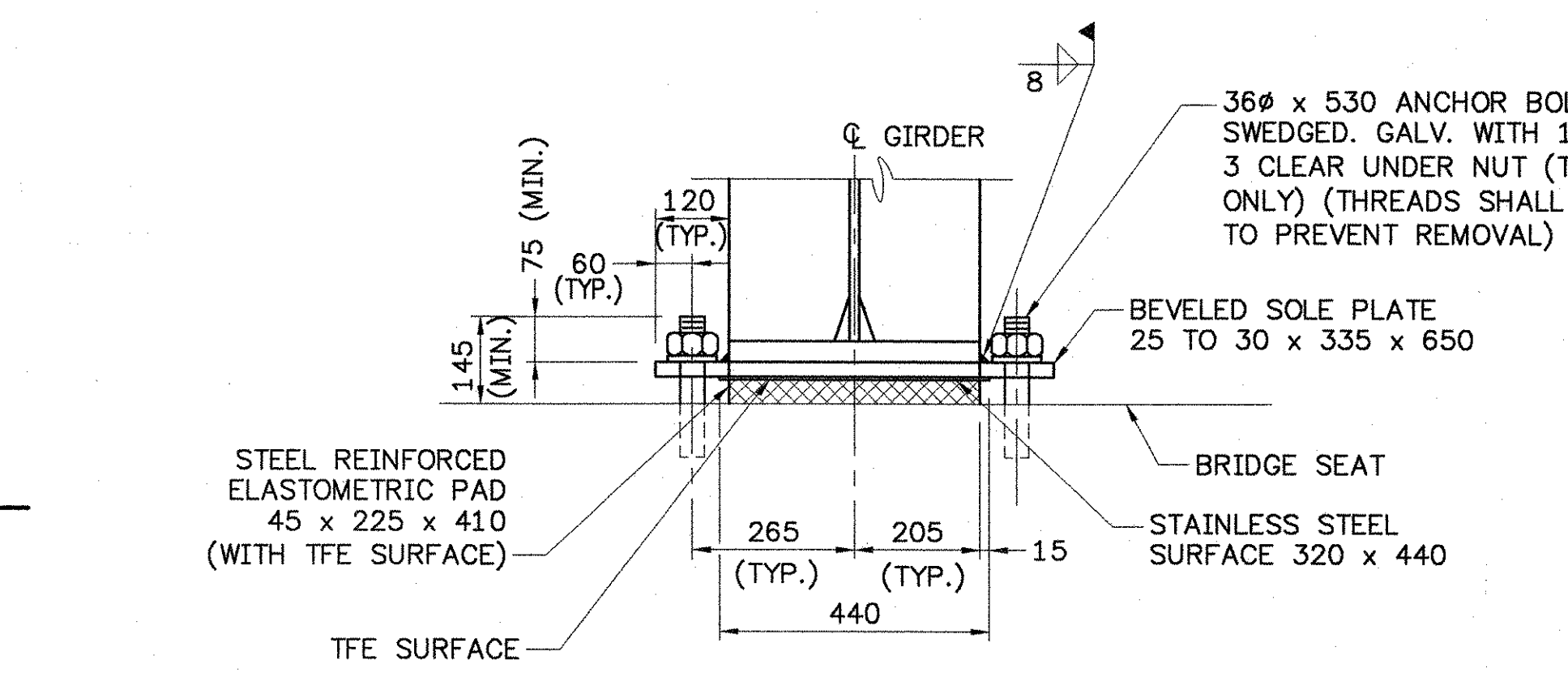
**SIDE VIEW**  
SCALE 1:10



**SIDE VIEW**  
SCALE 1:10



**FRONT VIEW**  
SCALE 1:10



**EXPANSION BEARING DETAILS**

**FIXED BEARING DETAILS**

BEARING SETTING DIMENSIONS		
TEMP	A (mm)	B (mm)
-30°C	70	84
-20°C	66	80
-10°C	62	77
0°C	59	73
10°C	55	70
20°C	51	66
30°C	48	62
40°C	44	59
50°C	40	55

**STATE OF VERMONT**  
**AGENCY OF TRANSPORTATION**

Town Of	JAMAICA	Bridge No.	80
Highway No.	VT. ROUTE 100	Log Sta.	
		Surv. Sta.	
VT. ROUTE 100 OVER THE WEST RIVER			
BEARING DETAILS - APPROACH BRIDGE			
Designed By	JH	Drawn By	MWS
Checked By	RMR	Date	2/02
		Bridge Design Supervisor	LMM
		Date	2/02
PROJECT	JAMAICA	PROJECT NO.	BRF 013-1(B)
I.G.C. Info.			
Bridge Sheet No.		Sheet	65 Of 116

540 Commercial St.  
Manchester, NH 03101  
Ph: (603) 688-8223  
Fax: (603) 688-8802  
E-MAIL: CLD@CLDENGINEERS.COM

90284BRC.dwg (1=1)