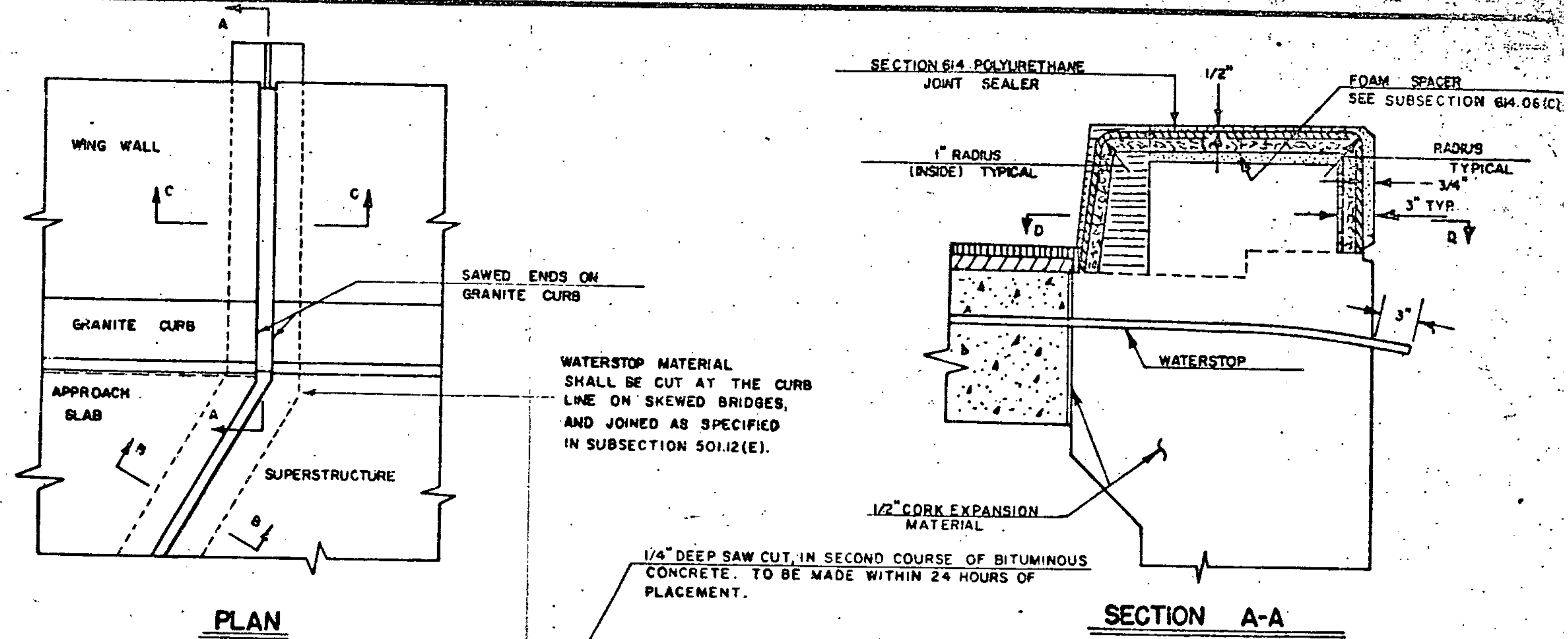


PLAN FOR SQUARE BRIDGES

PLAN FOR SKEWED BRIDGES

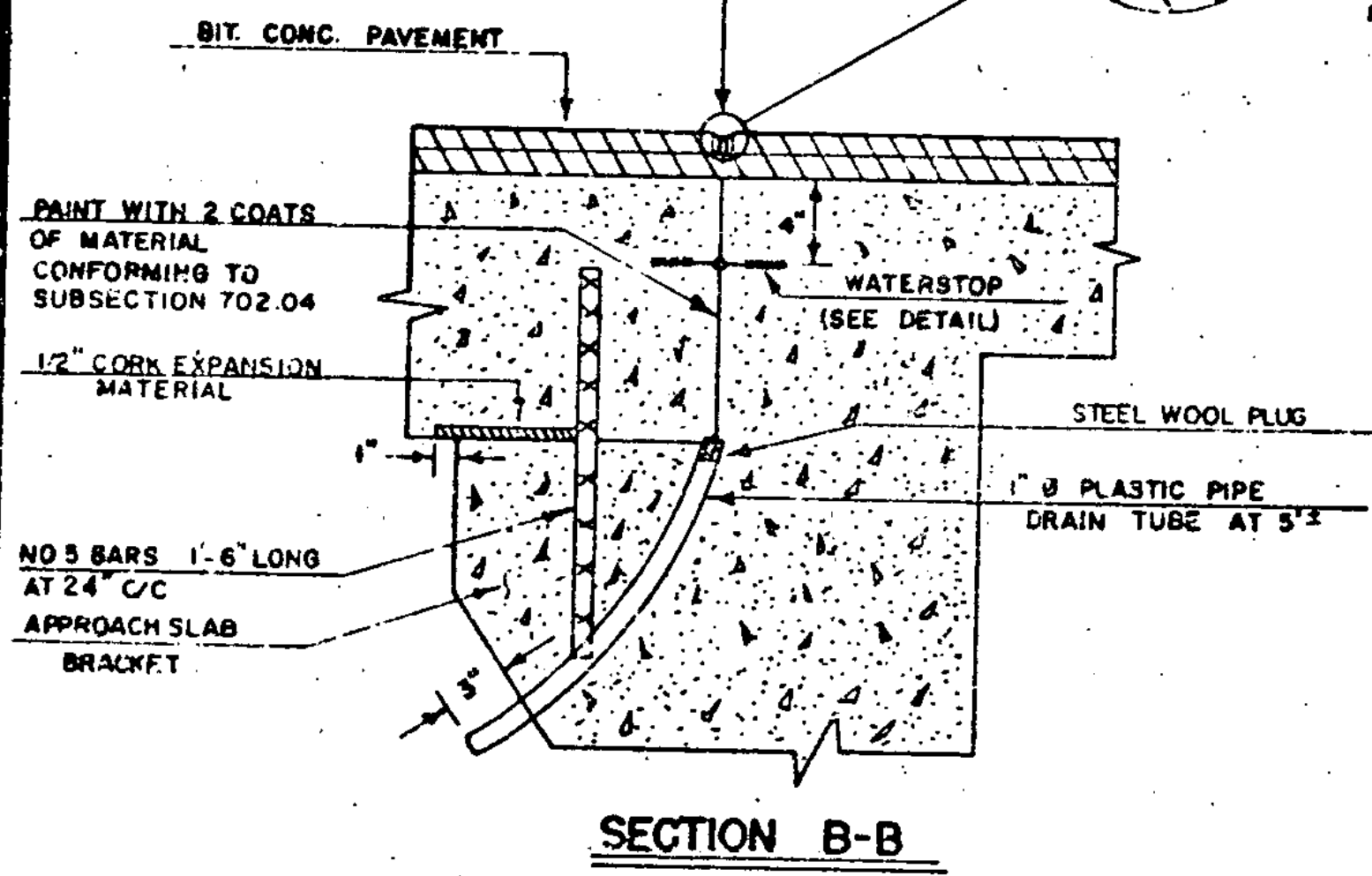
(DETAILS SHOWN FOR EXP. END; FIXED END SIMILAR EXCEPT \mathcal{R} s A AND B IN LIEU OF \mathcal{R} s C, D AND E; SEE SCB-D8-71)



PLAN

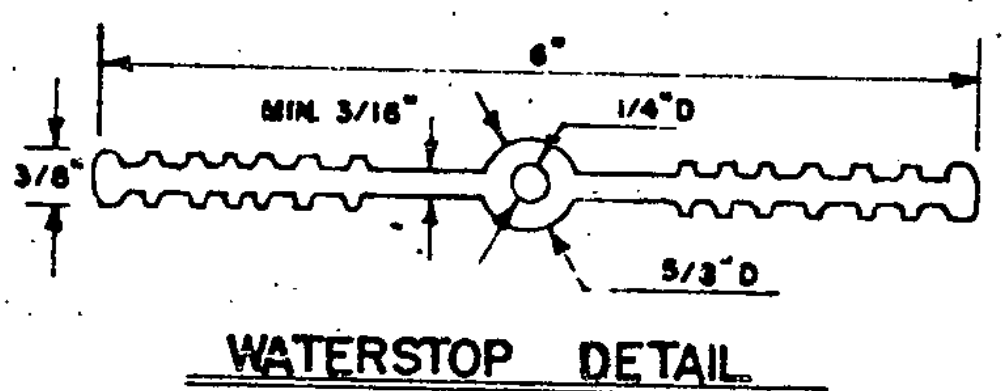
SECTION A-A

JOINT IS TO BE LOCATED ACCURATELY BY STRING LING, OR OTHER MEANS, PRIOR TO PAVING, SO THAT THE SAW CUT WILL BE MADE DIRECTLY OVER THE JOINT.



SECTION B-B

SECTION B-B WITH BACKWALL

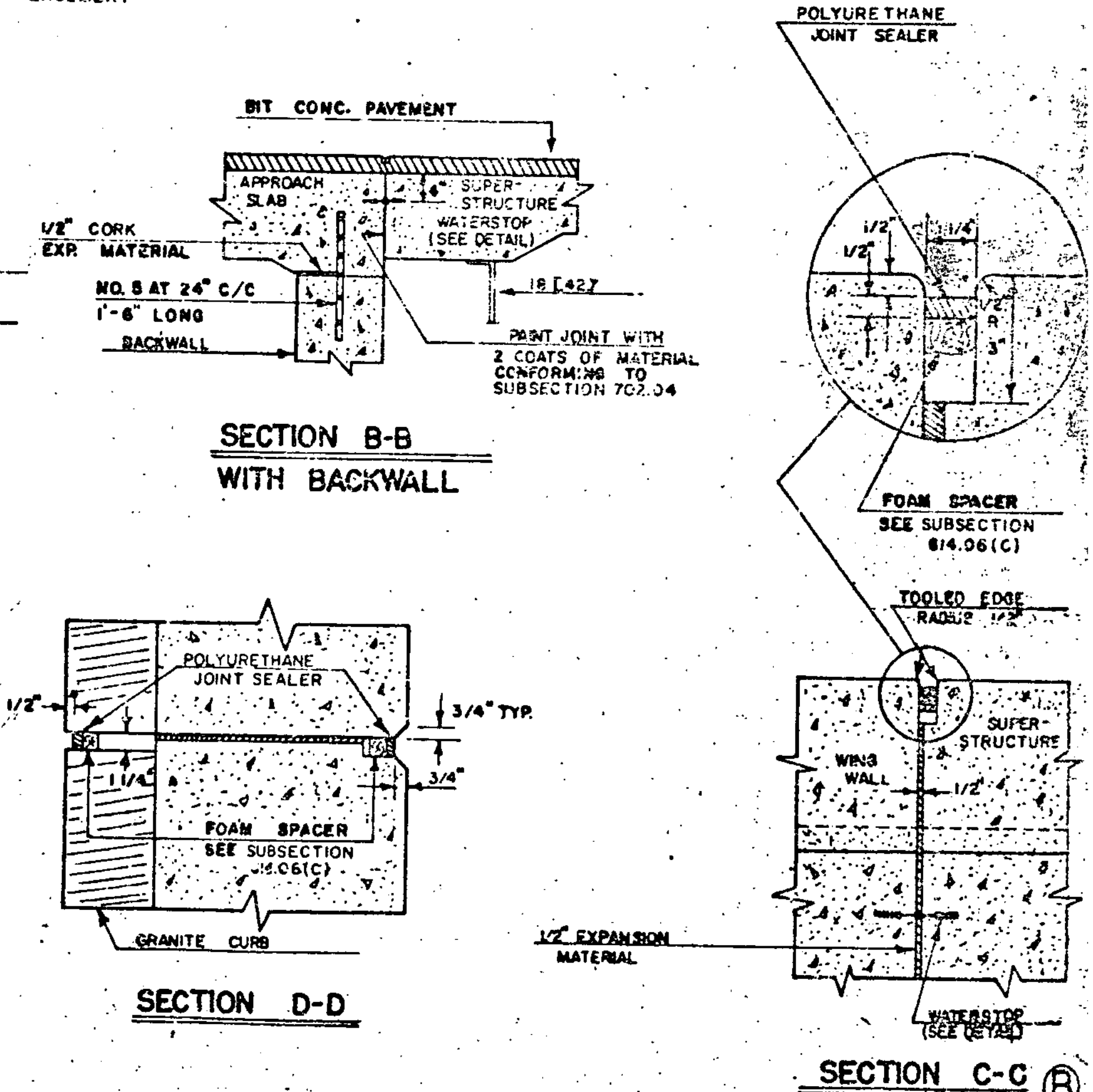


WATERSTOP DETAIL

MATERIAL TO BE POLYVINYLCHLORIDE, AS SPECIFIED IN SUBSECTION 707.30. OTHER CONFIGURATIONS, WITH MINOR DIMENSION VARIATIONS, MAY BE USED WITH THE APPROVAL OF THE BRIDGE ENGINEER.

COST OF THE WATERSTOP SHALL BE INCLUDED IN THE UNIT PRICE BID FOR ITEM 501.20 CONCRETE.

THE CONTRACTOR SHALL PROVIDE ADEQUATE SUPPORT TO MAINTAIN PROPER ALIGNMENT OF WATERSTOP DURING CONSTRUCTION.



SECTION D-D

SECTION C-C

REVISIONS AND CORRECTIONS
 1. Added notes to saw cut 1st. & 2nd. courses of Bit. Conc. - J.WOOD 1-27-73

APPROVED: DATE: 12/14/71
 R.H. Currell
 CHIEF ENGINEER
 E.H. Stebbins
 ASST. CHIEF ENGINEER
 Fred Quinn
 BRIDGE ENGINEER

DETAILS OF W BEAM BRIDGES
 (A) CURTAIN WALL AT BEARING DEVICES
 (B) FIXED END JOINT DETAILS

VERMONT
 DEPARTMENT OF HIGHWAYS
 STRUCTURE STANDARDS

SCB-D9-71