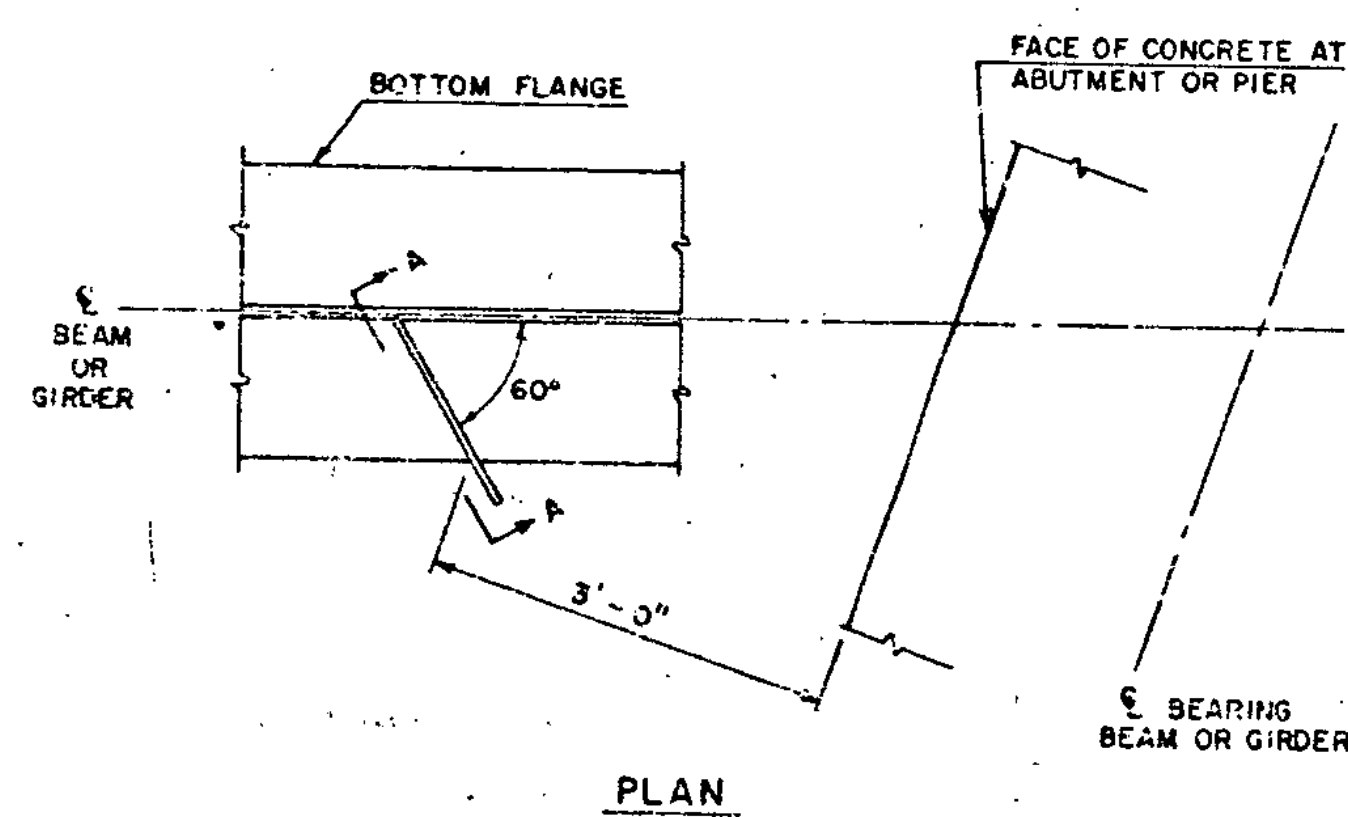
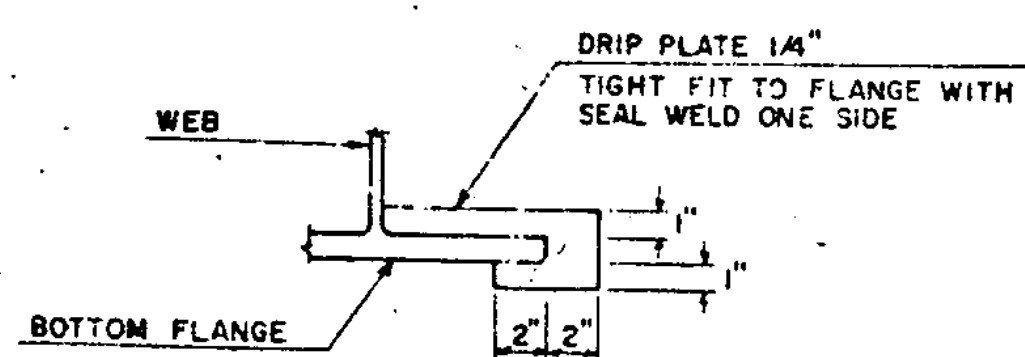


DETAILS OF PIER DIAPHRAGM CONNECTIONS



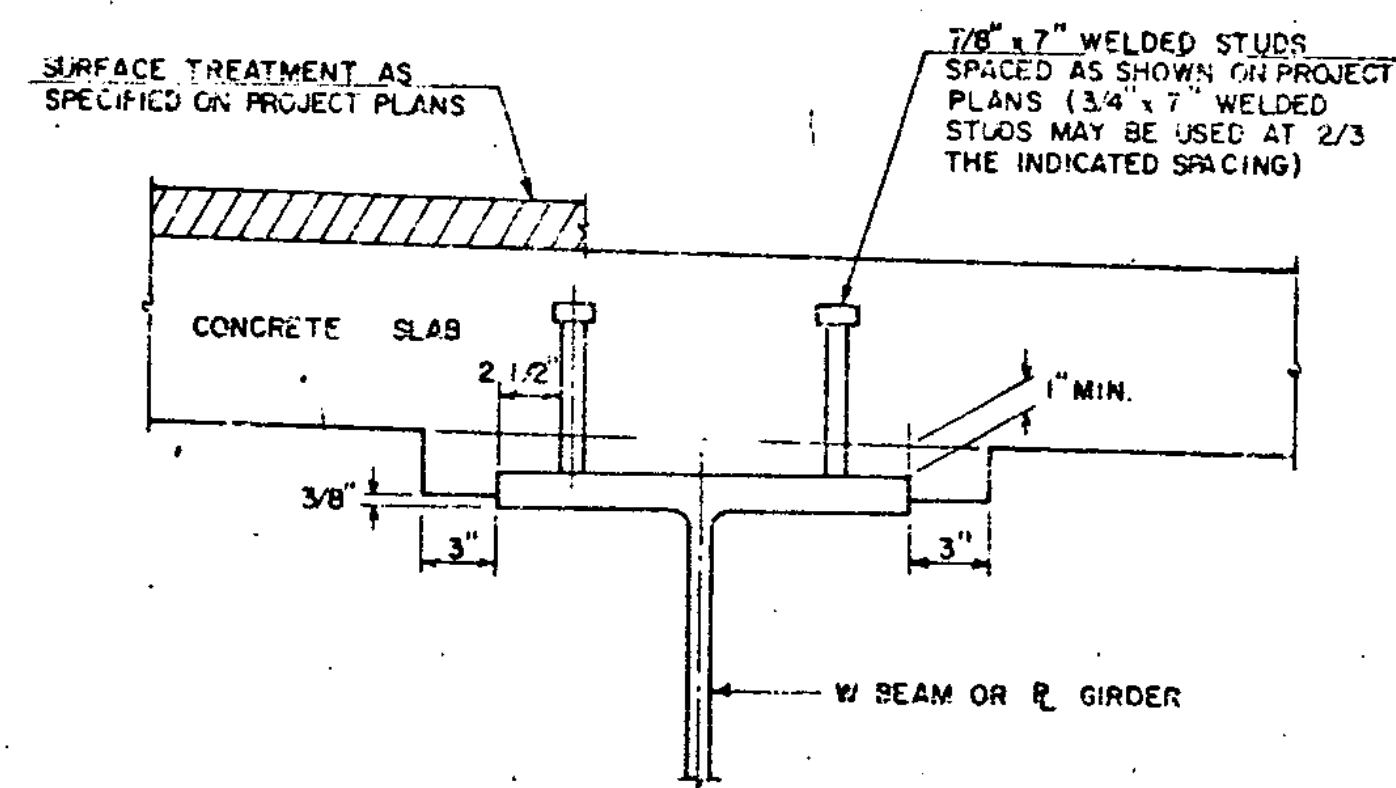
PLAN



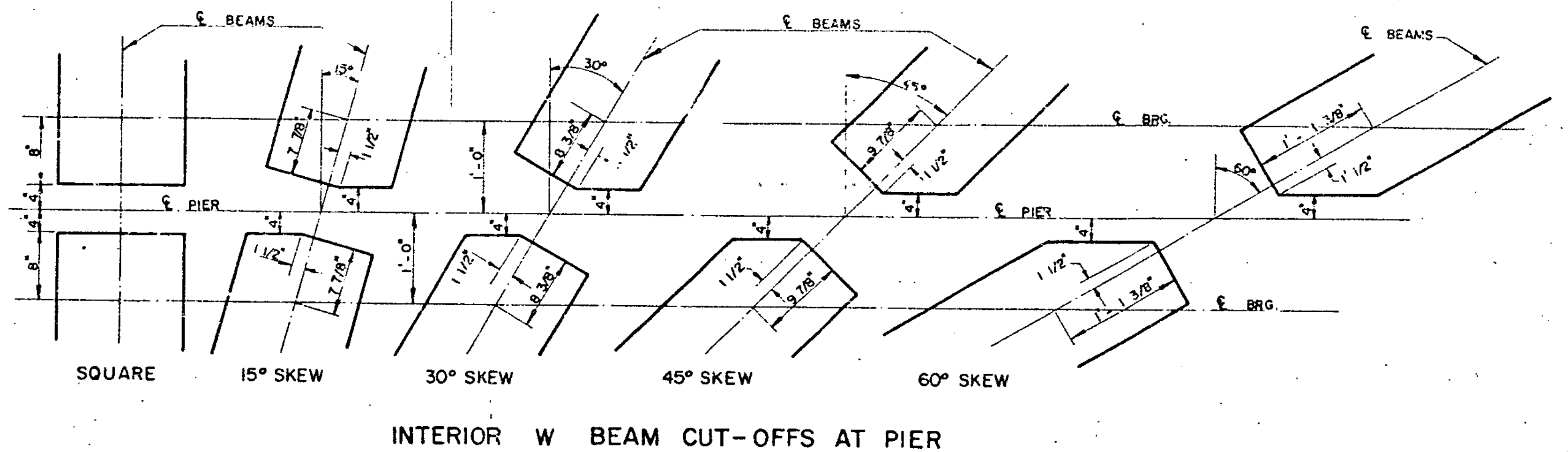
SECTION A-A

NOTE: DRIP PLATES SHALL BE PLACED ON OUTSIDE EDGE OF FASCIA GIRDERS ON THE HIGH SIDE OF ALL PIERS AND ABUTMENTS OR AS INDICATED ON PROJECT PLANS.

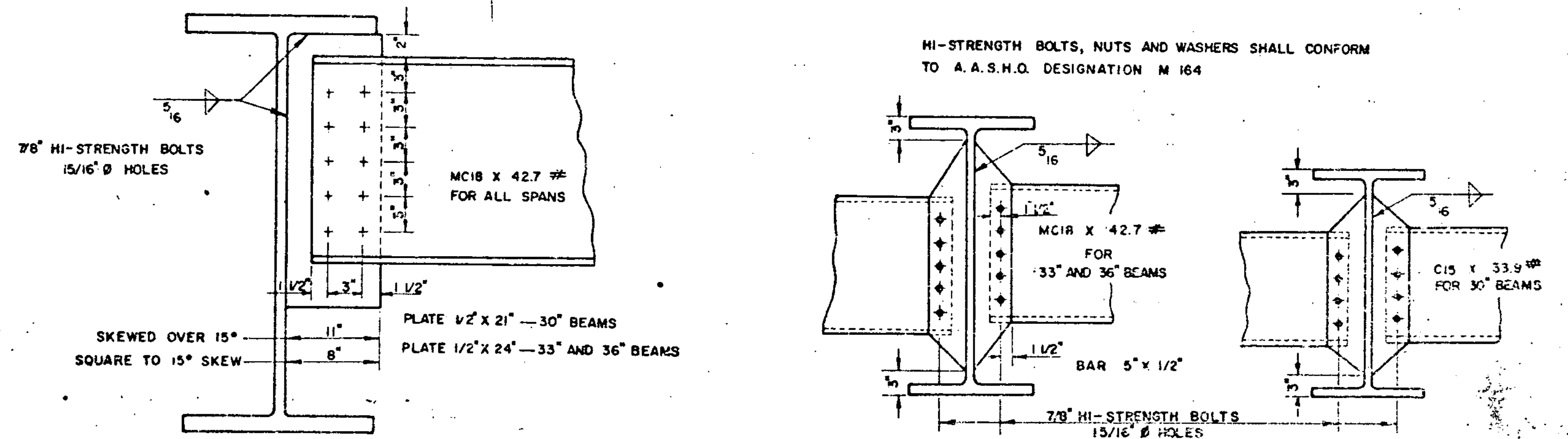
DRIP PLATE DETAILS



BEAM HAUNCH AND SHEAR CONNECTOR DETAILS

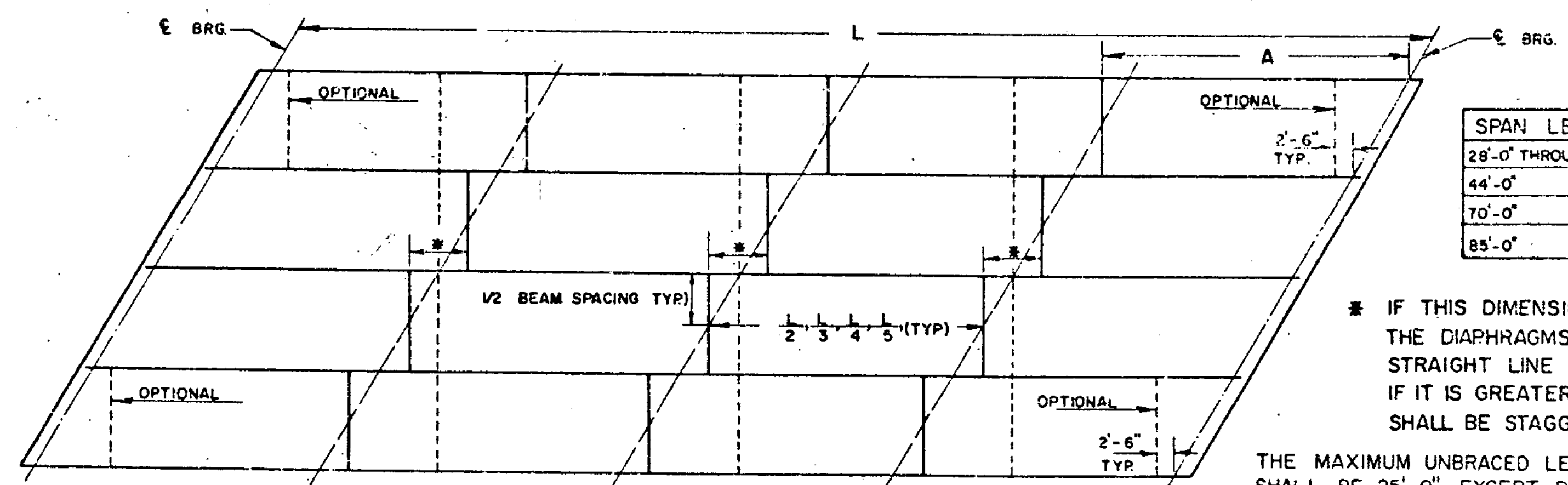


INTERIOR W BEAM CUT-OFFS AT PIER



PIER DIAPHRAGMS

INTERMEDIATE DIAPHRAGMS



DIAPHRAGM LOCATION PLAN

SPAN LENGTH	SETS OF DIAPH. REQUIRED
28'-0" THROUGH 43'-0"	1
44'-0" 69'-0"	2
70'-0" 84'-0"	3
85'-0" 99'-0"	4

* IF THIS DIMENSION IS LESS THAN 1'-0" THE DIAPHRAGMS MAY BE PLACED IN A STRAIGHT LINE AS INDICATED BY DASH LINE. IF IT IS GREATER THAN 1'-0" THE DIAPHRAGMS SHALL BE STAGGERED AS SHOWN.

THE MAXIMUM UNBRACED LENGTH OF BEAM IN ALL CASES SHALL BE 25'-0", EXCEPT DIMENSION "A" SHALL NOT EXCEED 15' ON FASCIA BEAMS UNLESS DIAPHRAGMS ARE USED AT C OF BEARINGS, OR UNLESS OPTIONAL DIAPHRAGMS ARE USED AS SHOWN.

REVISIONS AND CORRECTIONS

1. REMOVED DETAIL "C". J. WOOD 1-22-73
2. NOTE CONCERNING DIMENSION "A" ADDED TO DETAIL "E". J. WOOD 1-22-73
3. ADDED DETAILS "C" AND "F". W. TRIPP 12-19-76

APPROVED:

DATE: 12/14/71

R.M. Conrad
CHIEF ENGINEER
E.H. Stokerson
ASST. CHIEF ENGINEER
W. Tripp
BRIDGE ENGINEER

DETAILS OF W BEAM BRIDGES
STRUCTURAL STEEL DETAILS

- (A) (D) (E) DIAPHRAGM DETAILS
- (B) W BEAM CUT-OFFS
- (C) DRIP PLATE DETAILS
- (F) BEAM HAUNCH & SHEAR CONNECTOR DETAILS

VERMONT
DEPARTMENT OF HIGHWAYS
STRUCTURE STANDARDS

SCB-D7-71