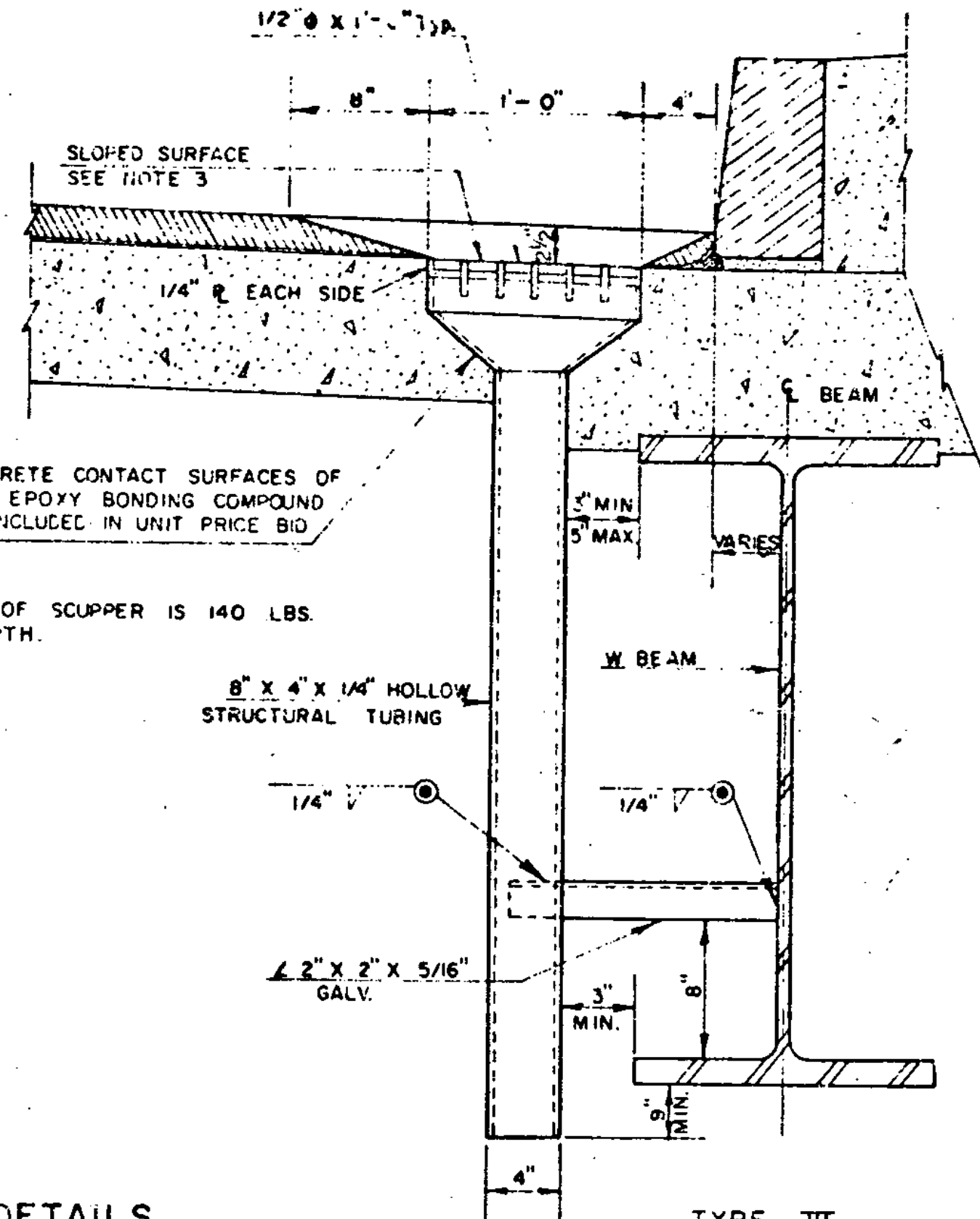
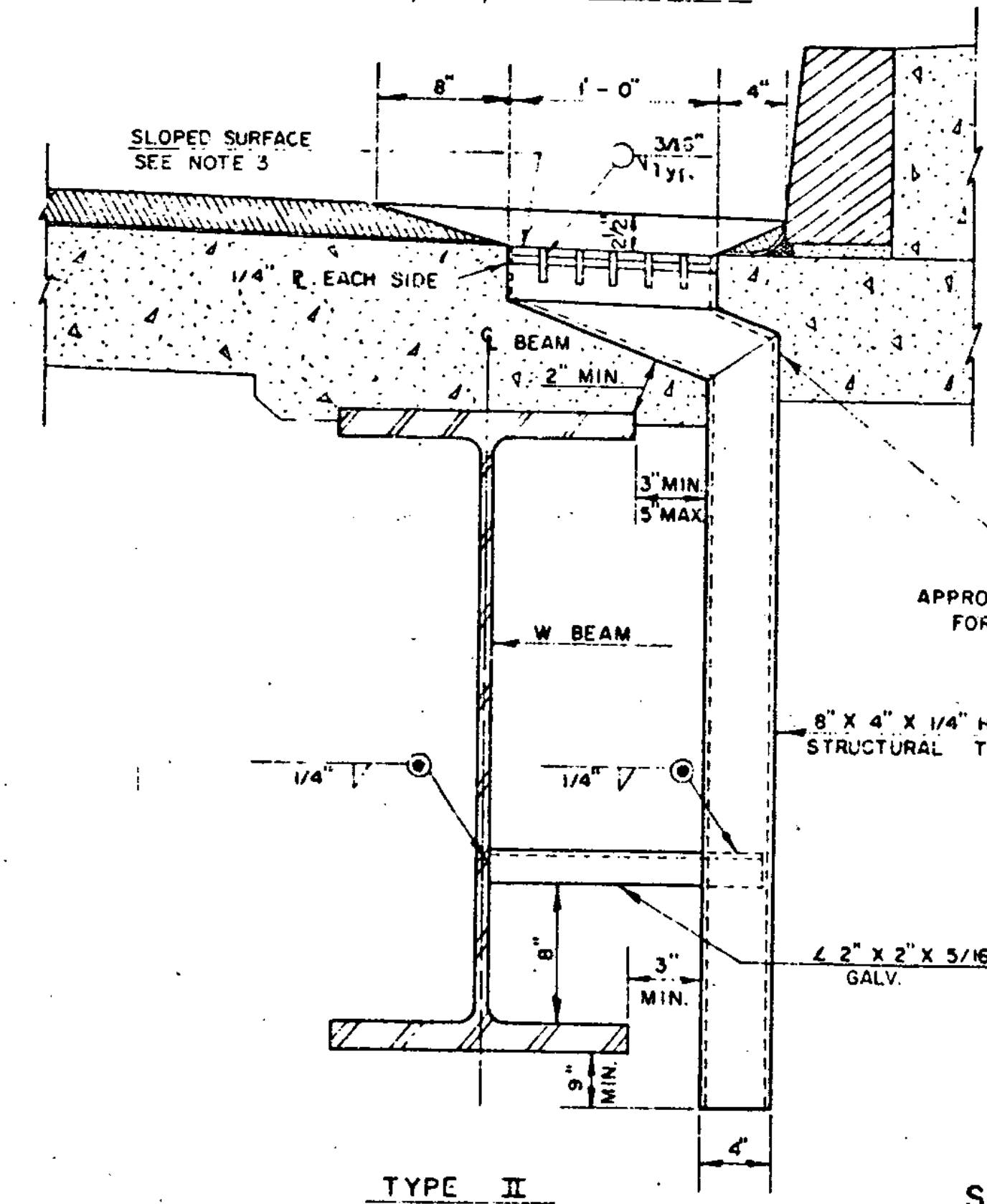
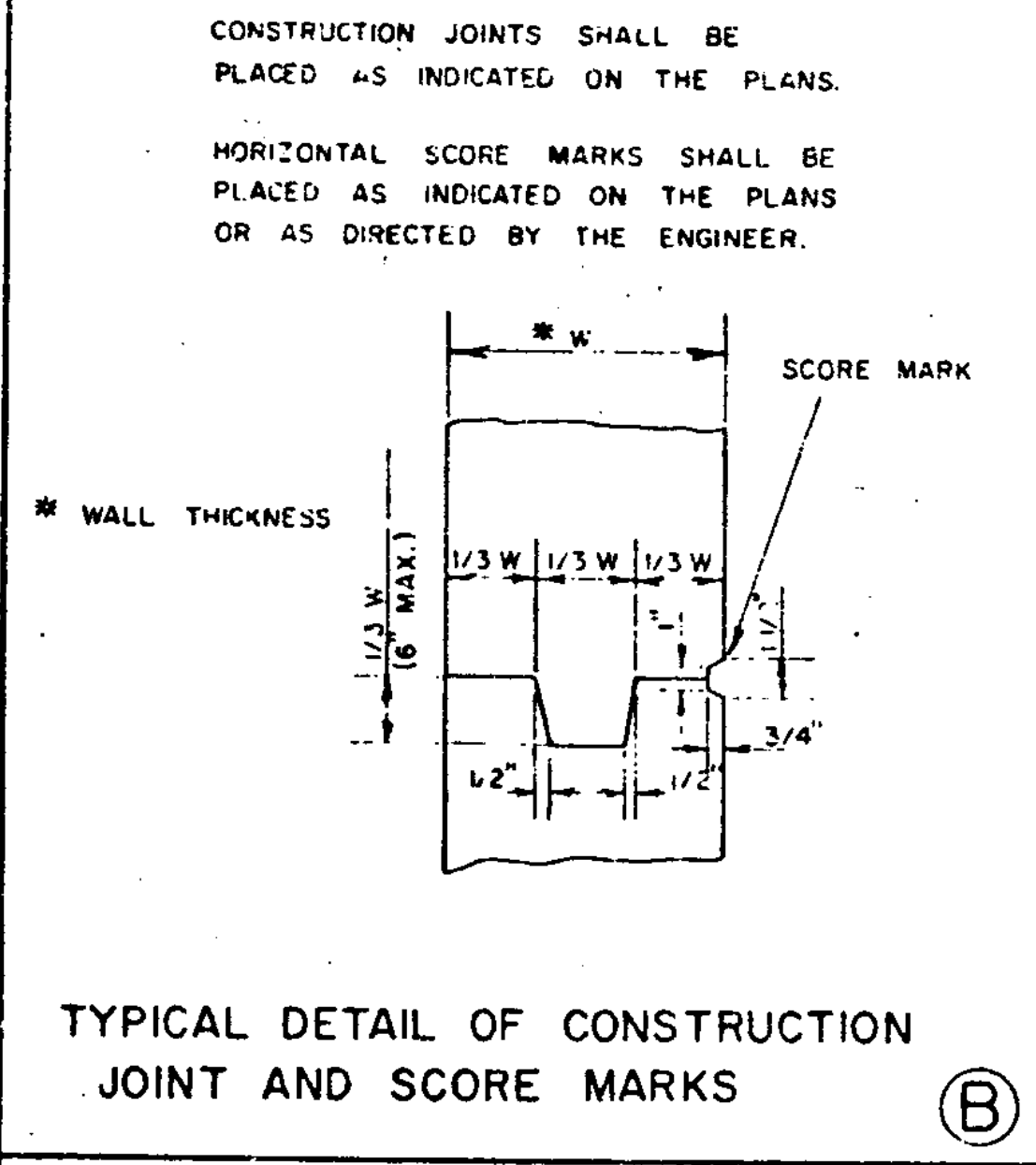


- NOTES -
THE FOLLOWING NOTES APPLY TO ALL SCUPPERS UNLESS OTHERWISE DETAILED ON PROJECT PLANS:
1. HOLLOW STRUCTURAL STEEL TUBING SHALL CONFORM TO ASTM A-533 OR A-501.
 2. ALL PLATES, BARS AND ANGLES SHALL CONFORM TO ASTM A-36.
 3. ALL SCUPPERS SHALL BE GALVANIZED ACCORDING TO ASTM A-123 AFTER FABRICATION.
 4. TOP SURFACE OF SCUPPERS MUST BE SLOPED TO MATCH ROADWAY CROSS SLOPE AND GRADE.
 5. END SCUPPERS ARE TO BE PLACED MIDWAY BETWEEN BRG. AND FIRST DIAPHRAGM ASSEMBLY.
 6. INTERMEDIATE SCUPPERS ARE TO BE PLACED MIDWAY BETWEEN DIAPHRAGM ASSEMBLIES.
 7. ON PROJECTS WITH HOT BITUMINOUS WEARING SURFACE, SET SCUPPERS 3/4" BELOW TOP OF CONCRETE SLAB.



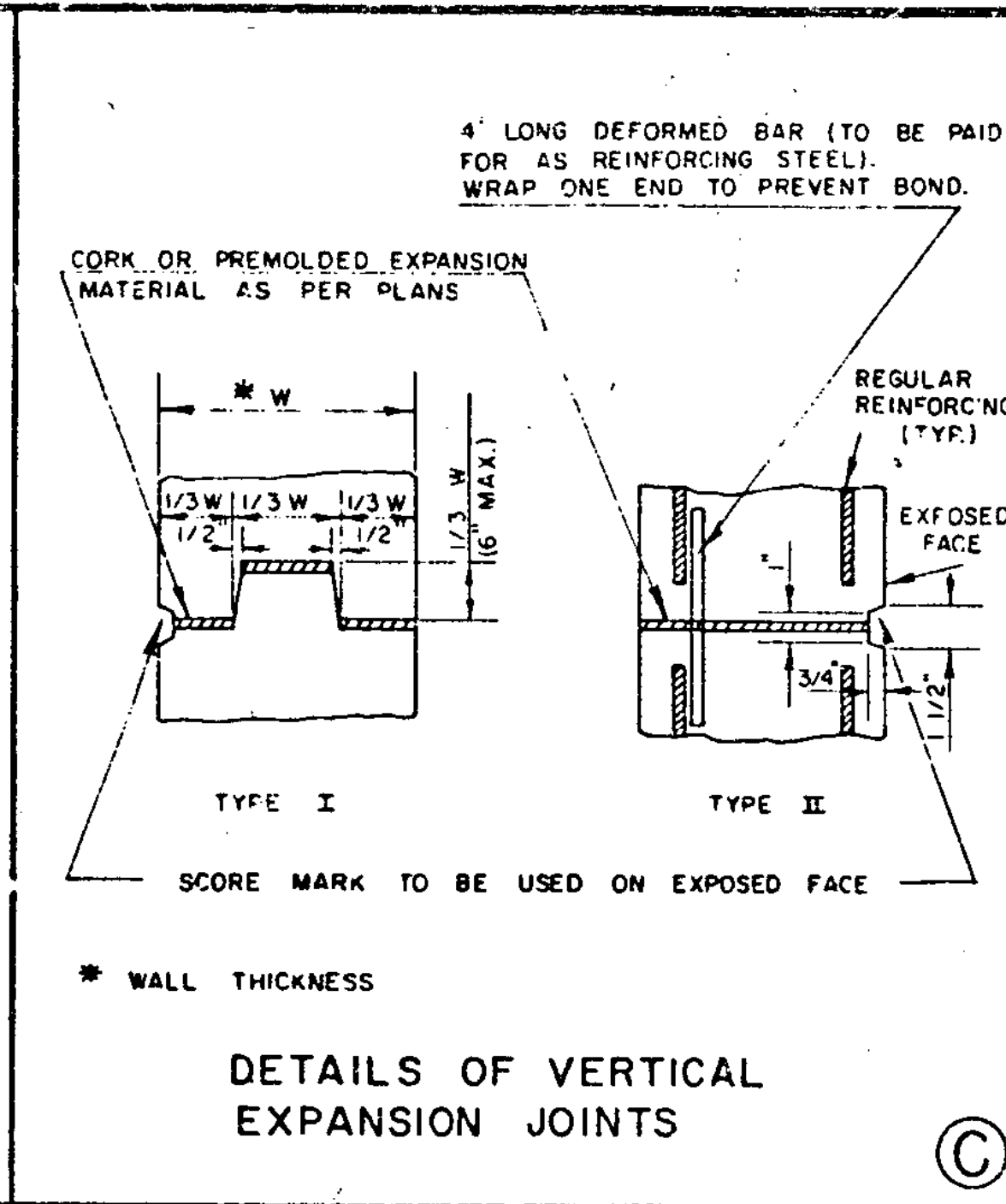
SCUPPER DETAILS

(A)



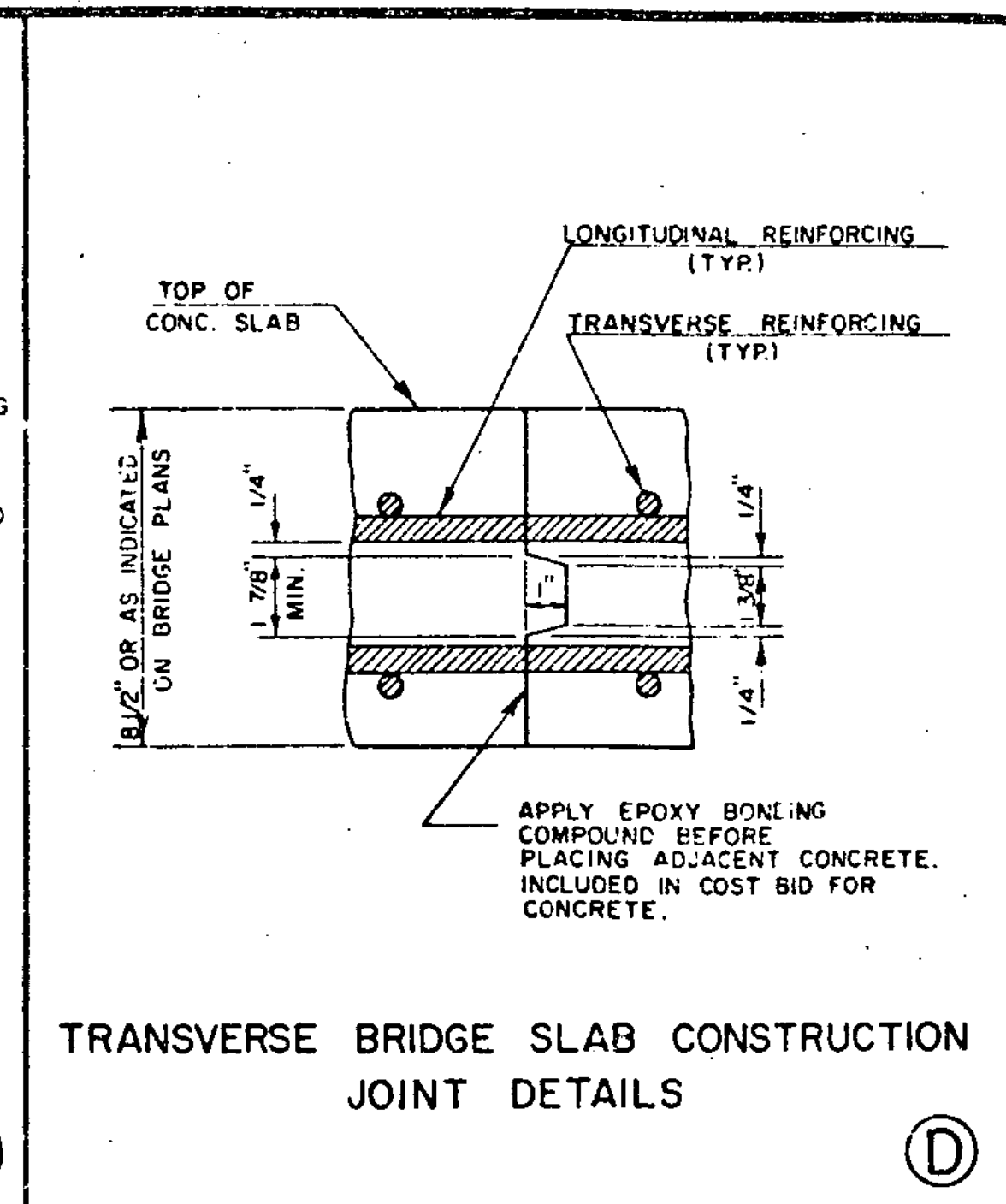
TYPICAL DETAIL OF CONSTRUCTION JOINT AND SCORE MARKS

(B)



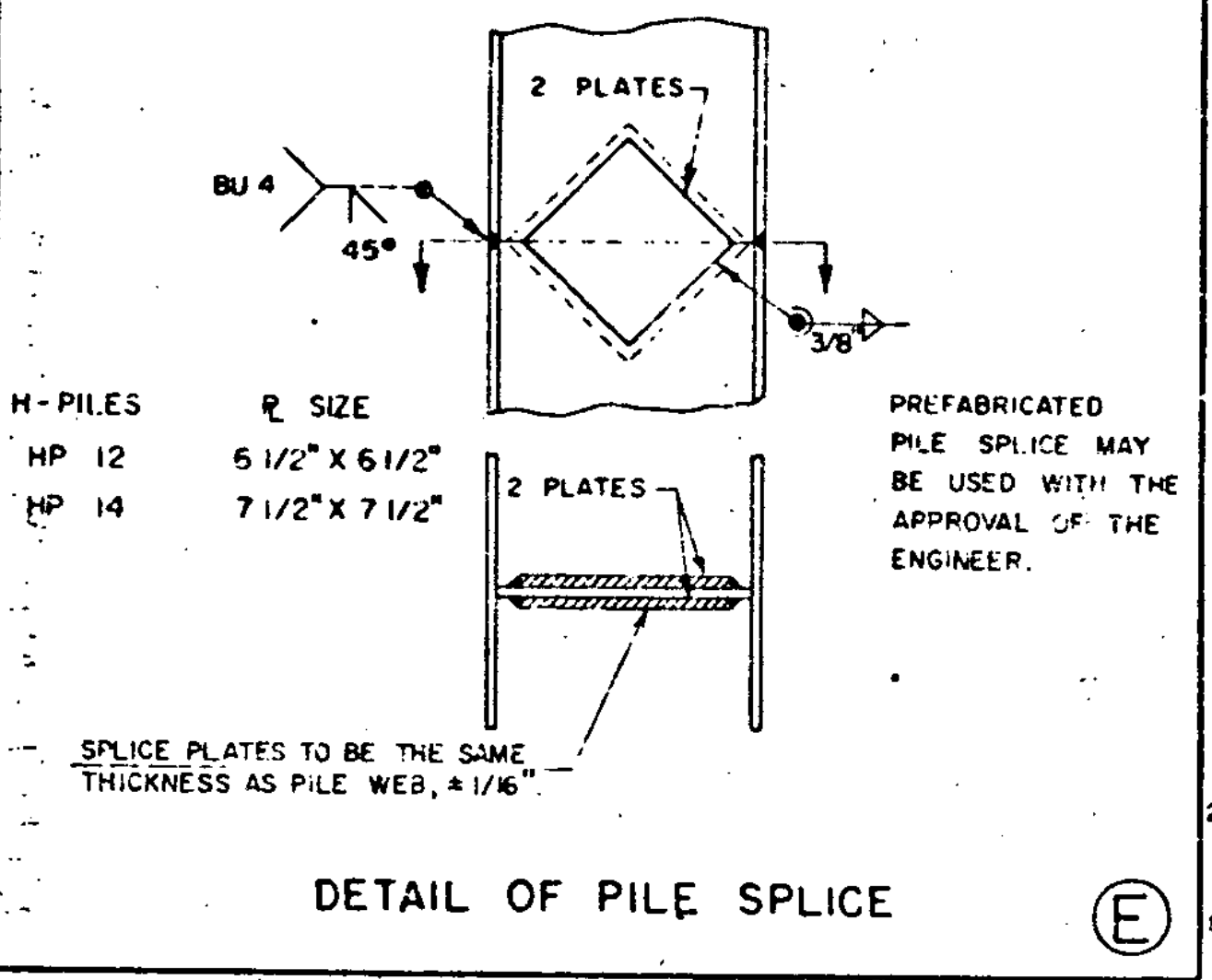
DETAILS OF VERTICAL EXPANSION JOINTS

(C)



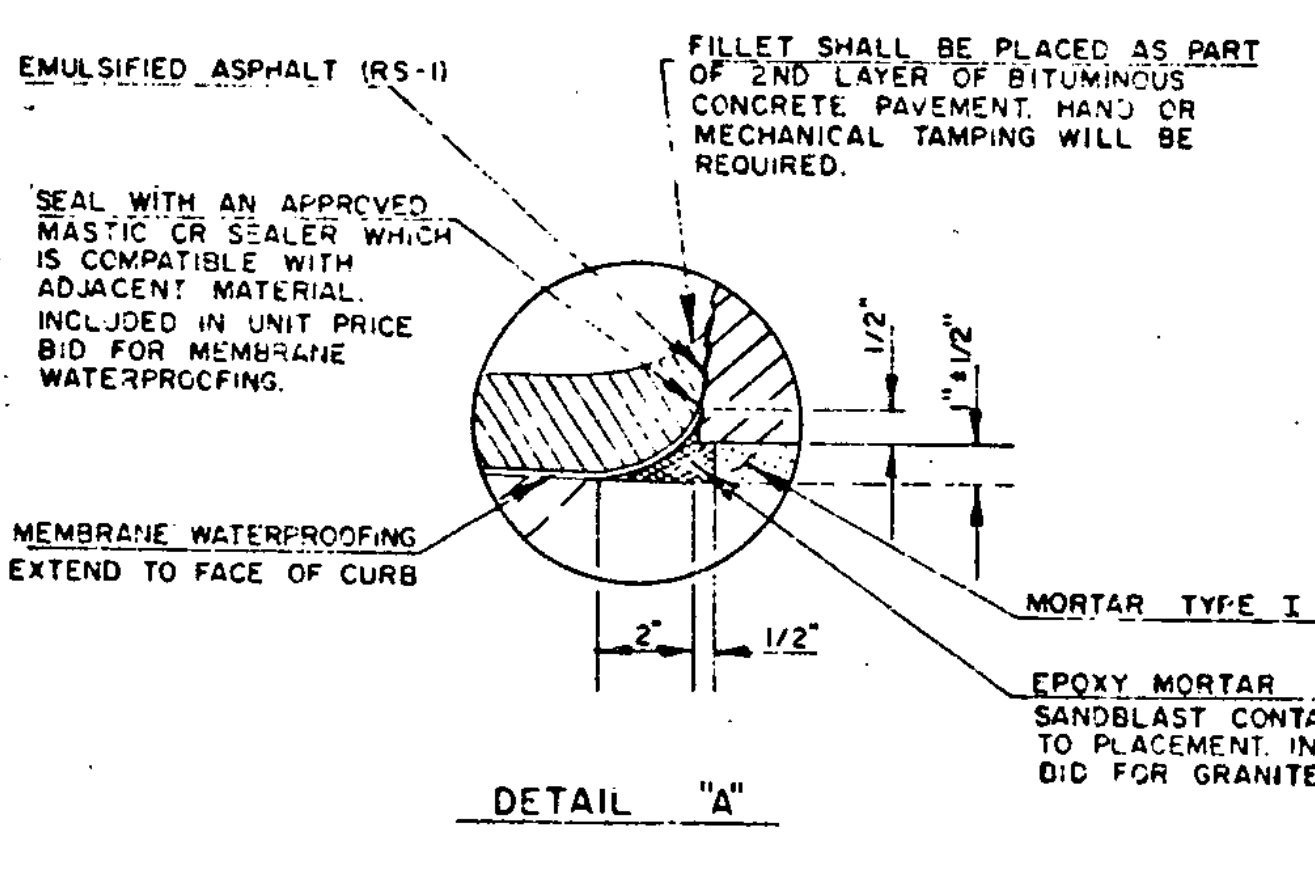
TRANSVERSE BRIDGE SLAB CONSTRUCTION JOINT DETAILS

(D)

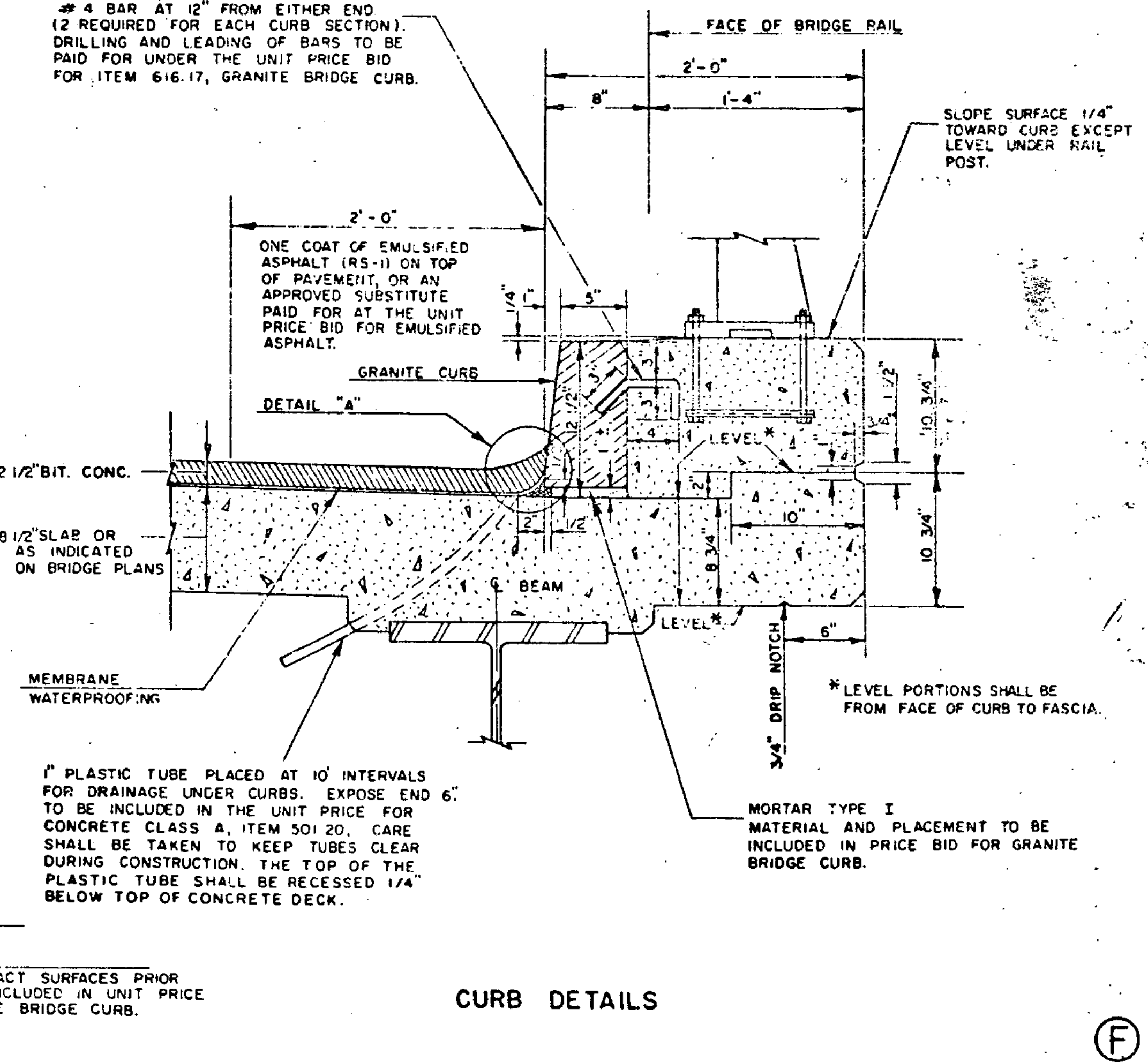


DETAIL OF PILE SPLICE

(E)



DETAIL "A"



CURB DETAILS

(F)

REVISIONS AND CORRECTIONS

1. Added 1/2" bars to scupper details	J. WOOD 1-27-75
2. Added to note on 1" plastic tubes	J. WOOD 1-27-75
3. Revised pile splice weld.	W. Tripp 12-29-75
4. Revised scupper length and pile splice detail	W. Tripp 12-15-76
5. Revised slab and pavement thicknesses	W. Tripp 4-3-78
6. Revised scupper notes.	W. Tripp 1-3-79

APPROVED DATE: Nov. 28 1973

E. H. Stuckney
CHIEF ENGINEER

R. O. Munn
ASST. CHIEF ENGINEER

H. M. Smith
BRIDGE ENGINEER

DETAILS OF W BEAM BRIDGES

(A) SCUPPER DETAILS
(B)(C)(D) CONSTRUCTION DETAILS
(E) PILE DETAILS
(F) CURB DETAILS

VERMONT AGENCY OF TRANSPORTATION

STANDARD

SCB-D6-73