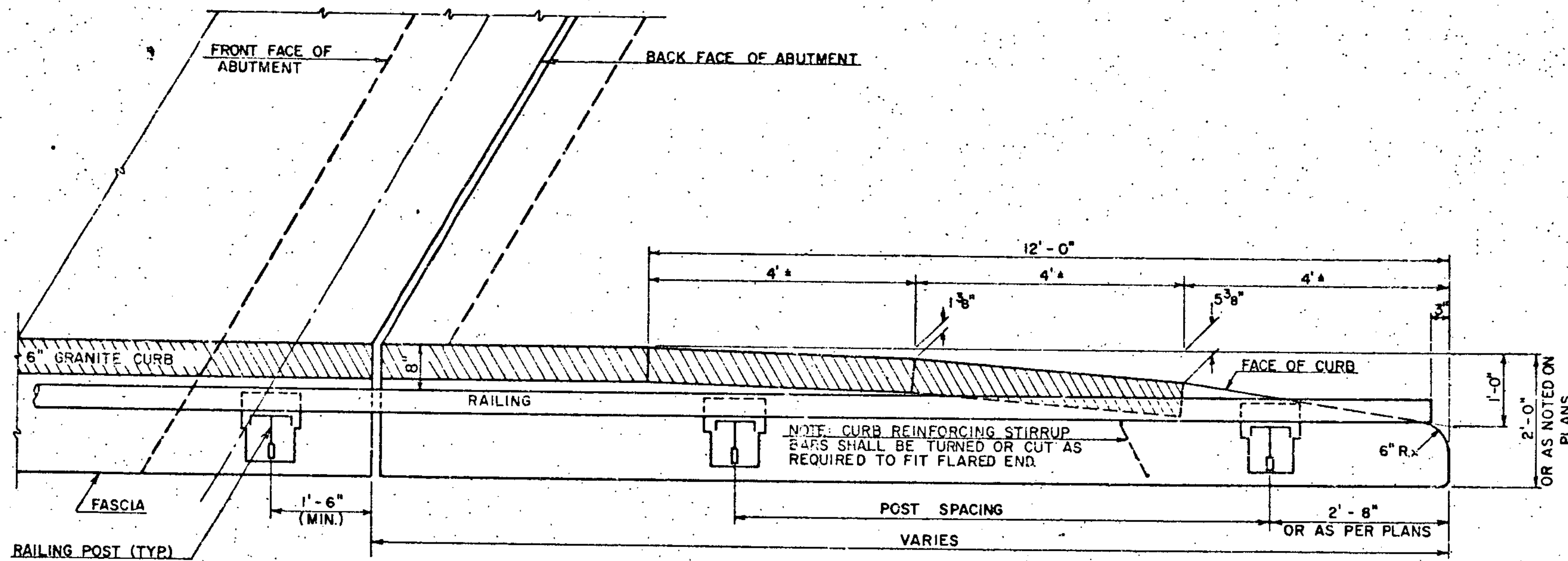


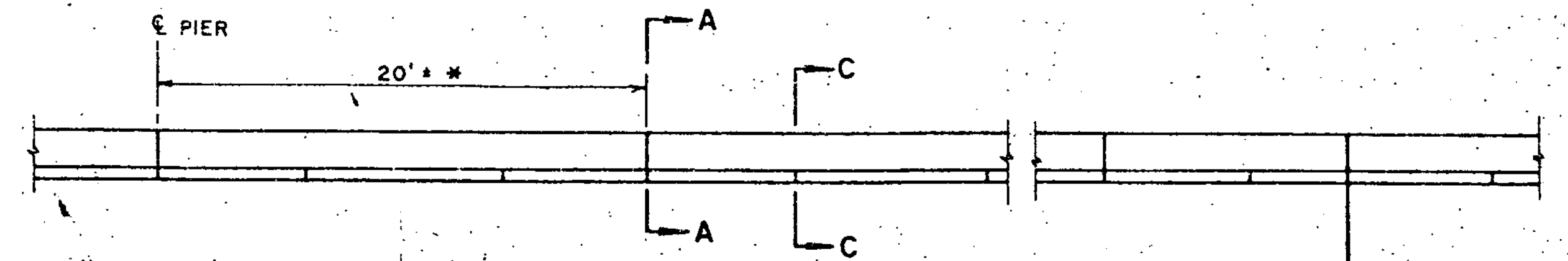
TYPE II - CONCRETE CURB END



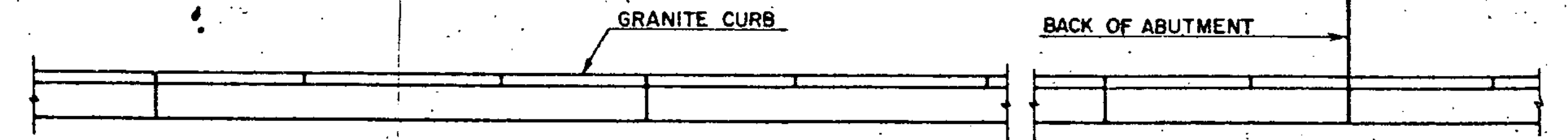
TYPE I - GRANITE CURB END

— PLAN AT ABUTMENT —

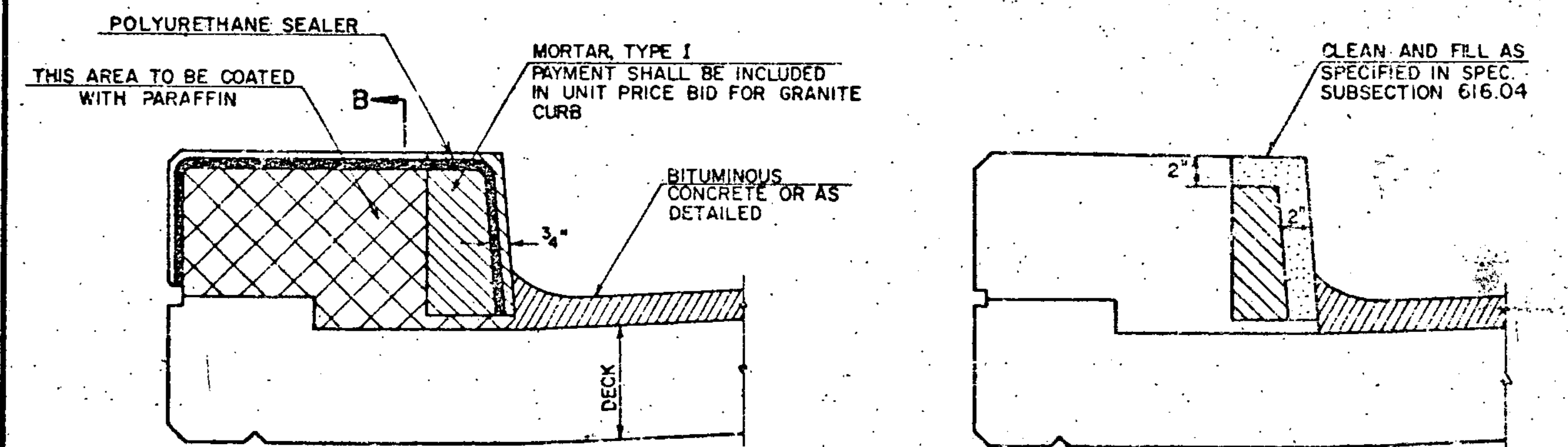
(A)



* BRIDGE CURB SECTIONS ARE TO BE A MAXIMUM OF 20 FT WITH THE JOINTS TO BE LOCATED AT GRANITE BRIDGE CURB JOINTS, AND SPACED 1'-0" MINIMUM FROM ADJACENT RAIL POSTS. CONCRETE TO BE PLACED IN ALTERNATE SECTIONS WITH A MINIMUM OF 48 HOURS BETWEEN POURS.

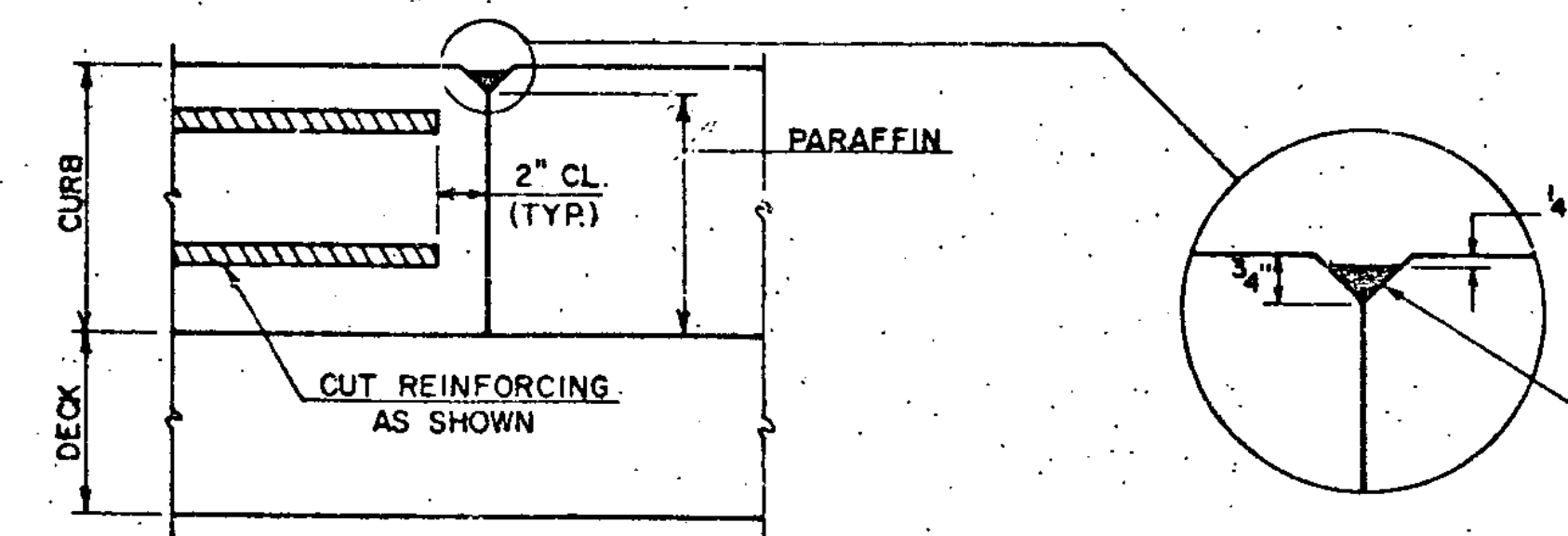


— TYPICAL PLAN —



— SECTION A-A —

— SECTION C-C —



— SECTION B-B —

FORM SLOT IN CONCRETE CURB JOINTS AND SEAL WITH POLYURETHANE JOINT SEALER AS SPECIFIED IN SECTION 707.11. (COLOR TO MATCH CONCRETE.) PAYMENT FOR POLYURETHANE JOINT SEALER AND PARAFFIN SHALL BE INCLUDED IN THE UNIT PRICE BID FOR ADJACENT CONCRETE.

(B)

REVISIONS AND CORRECTIONS

APPROVED:

JAN 8 1976
DATE

E. H. Stickney
CHIEF ENGINEER

R. O. Munn
ASST. CHIEF ENGINEER

H. M. Smith
BRIDGE ENGINEER

DETAILS OF W BEAM BRIDGES

- (A) CURB LAYOUT DETAILS
- (B) CURB JOINT DETAILS

VERMONT
DEPARTMENT
OF HIGHWAYS
STANDARD

SCB-D4-76