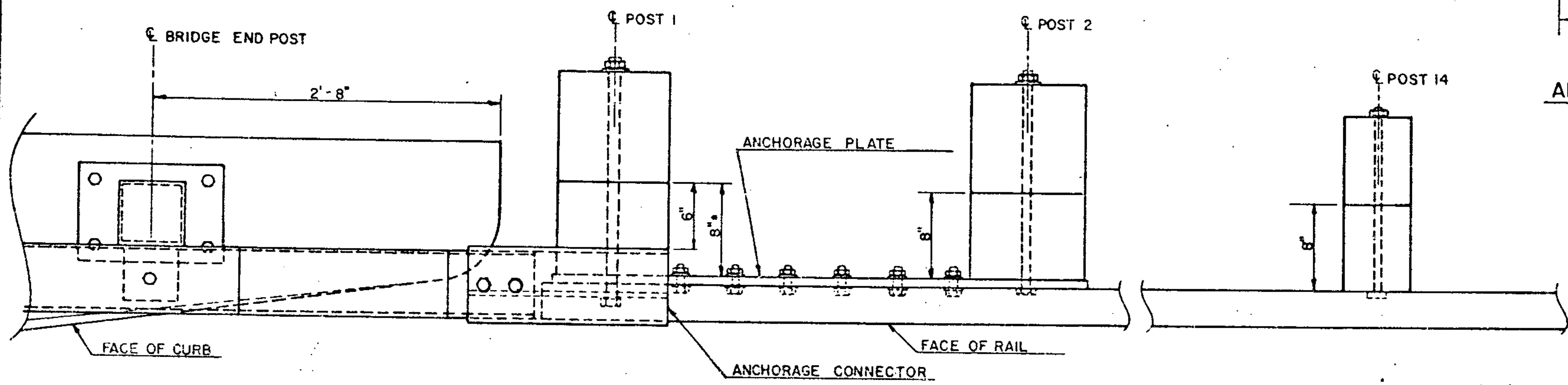
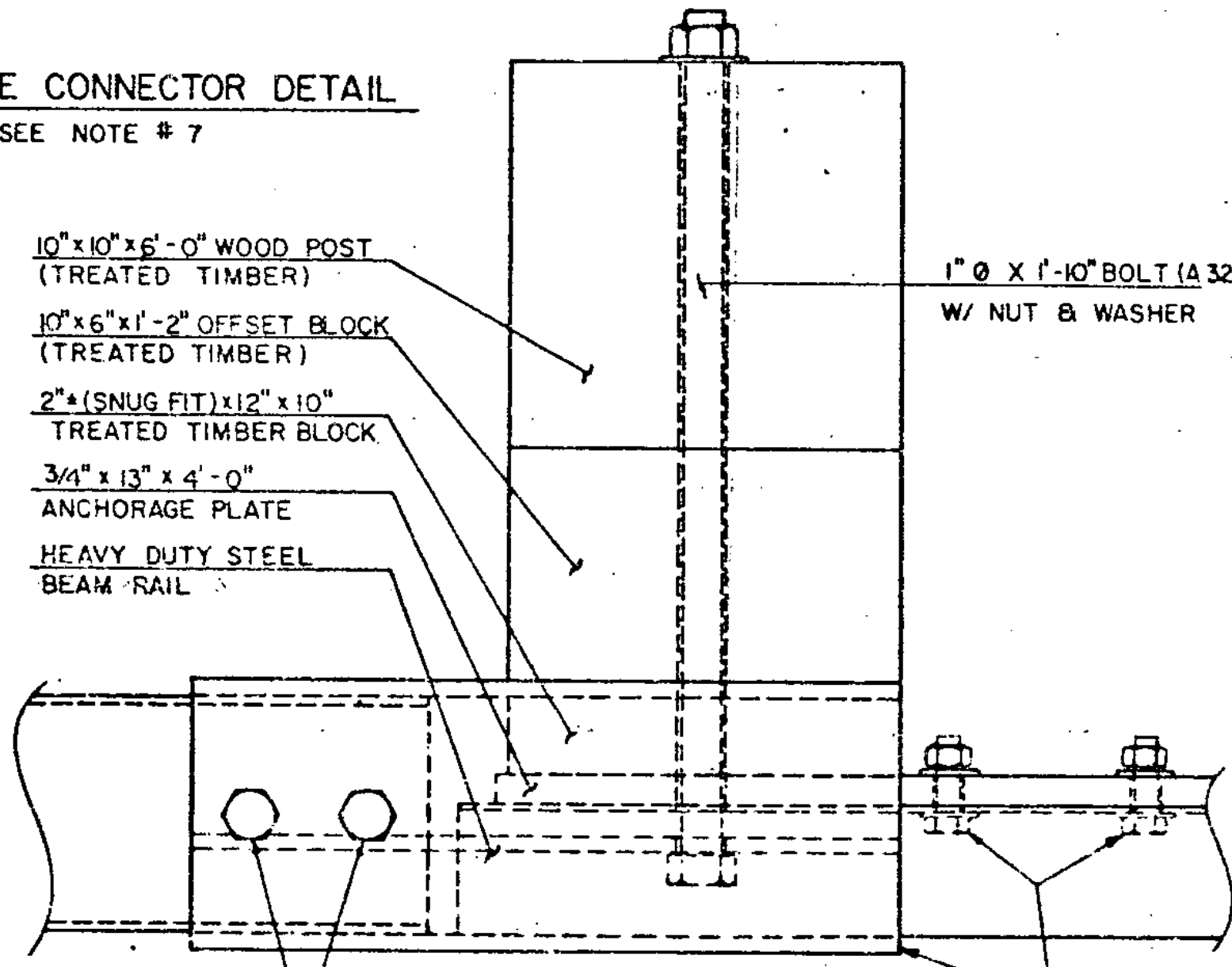


- NOTES**
- REFER TO STANDARD G-1 FOR DETAILS OF APPROACH GUARD RAIL.
  - APPROACH RAIL SPLICES SHALL LAP IN DIRECTION OF TRAFFIC FLOW.
  - ANCHORAGE CONNECTOR AND ANCHORAGE PLATE SHALL BE ASTM A 36 STEEL GALVANIZED TO ASTM A 123 AFTER FABRICATION.
  - REFER TO STANDARD SB-R4A-82 FOR NOTES AND DETAILS OF BRIDGE RAILING.
  - GUARD RAIL APPROACH SECTION-TYPE I & II SHALL INCLUDE ANCHORAGE PLATE, ANCHORAGE CONNECTOR, RAIL, POSTS, BLOCKS, AND ATTACHMENT HARDWARE.
  - APPROACH RAILING SHALL BE HEAVY DUTY STEEL BEAM FOR 50'-0" FROM THE C. OF POST I FOR TYPE I AND 12'-6" FROM THE C. OF POST I FOR TYPE II.
  - ALLOWABLE DIMENSIONAL TOLERANCE FOR BENT SECTIONS IS 1/16 OF AN INCH.



ANCHORAGE CONNECTOR DETAIL  
SEE NOTE # 7

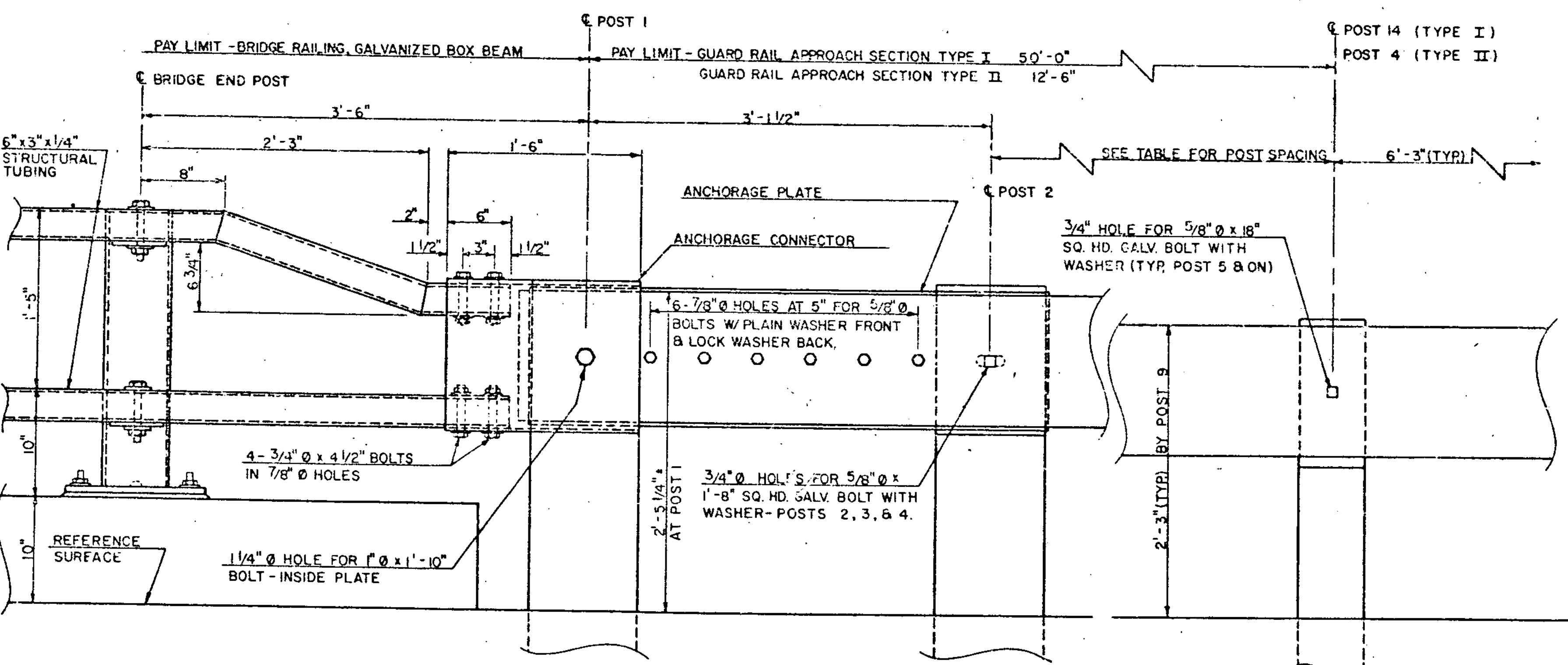


GUARD RAIL APPROACH SECTION TYPE I

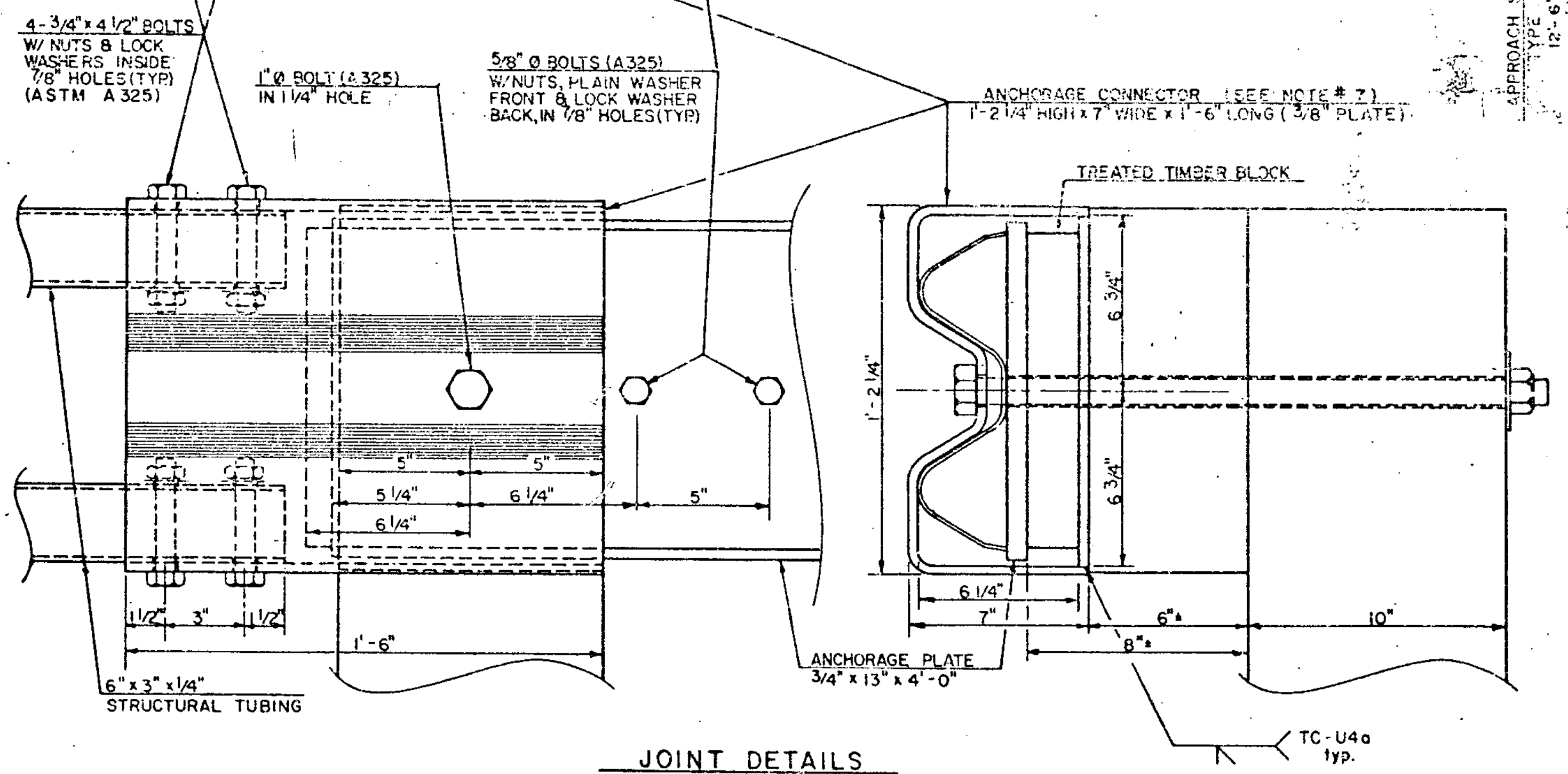
POST NO.	POST SIZE	OFFSET BLOCK	SPACING
END POST			3'-6"
1	10" x 10"	10" x 6"	3'-1 1/2"
2	10" x 10"	10" x 8"	3'-1 1/2"
3	10" x 10"	10" x 6"	3'-1 1/2"
4	10" x 10"	10" x 8"	3'-1 1/2"
5	8" x 8"	8" x 8"	3'-1 1/2"
6	8" x 8"	8" x 8"	3'-1 1/2"
7	8" x 8"	8" x 8"	3'-1 1/2"
8	8" x 8"	8" x 8"	3'-1 1/2"
9	6" x 8"	6" x 8"	4'-2"
10	6" x 8"	6" x 8"	4'-2"
11	6" x 8"	6" x 8"	4'-2"
12	6" x 8"	6" x 8"	6'-3"
13	6" x 8"	6" x 8"	6'-3"
14	6" x 8" (TYP)	6" x 8" (TYP)	6'-3" (TYP)

GUARD RAIL APPROACH SECTION TYPE II

POST NO.	POST SIZE	OFFSET BLOCK	SPACING
END POST			3'-6"
1	10" x 10"	10" x 5"	3'-1 1/2"
2	10" x 10"	10" x 8"	4'-0 1/2"
3	8" x 6"	8" x 8"	4'-6 1/4"
4	8" x 6"	8" x 8"	6'-3" (TYP)



BRIDGE APPROACH ELEVATION

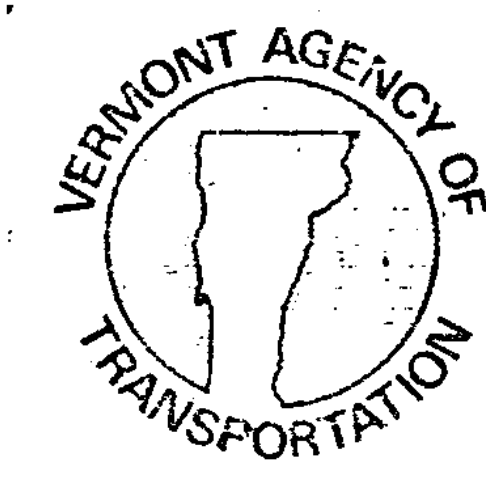


JOINT DETAILS

REVISIONS AND CORRECTIONS  
1. ADDED TYPE II APPROACH DETAILS, AND REVISED ANCHORAGE CONNECTOR DETAILS. R. HAUP 9/7/83

APPROVED: DECEMBER 28, 1981  
DATE  
*Arthur J. East*  
CHIEF OF DESIGN  
*W. M. Smith*  
STRUCTURES ENGINEER  
*J. J. [Signature]*  
DIRECTOR OF ENGINEERING AND CONSTRUCTION

# GUARD RAIL APPROACH SECTION-TYPE I & TYPE II



STANDARD  
SB-R4B-82