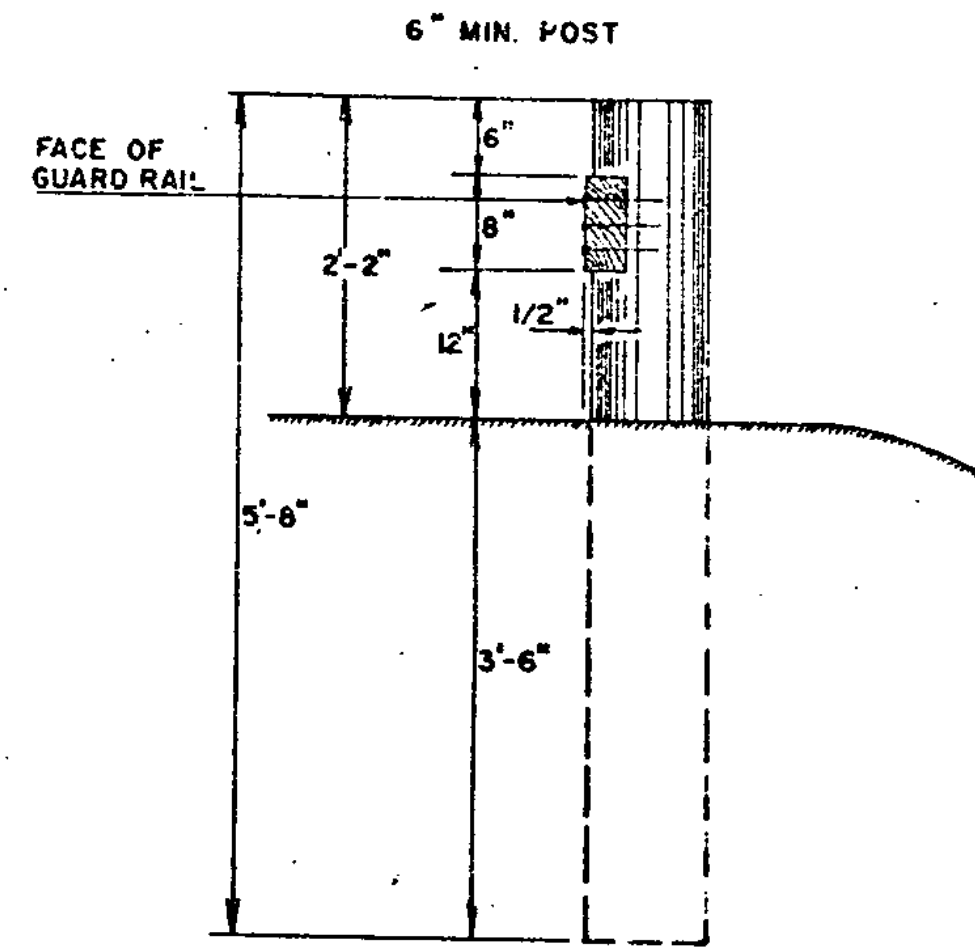


PLANK SIXTEEN FEET IN LENGTH TO BE USED WHEREVER POSSIBLE. POSTS SIX (6) INCHES SQUARE MAY BE USED IN PLACE OF ROUND POSTS. FIRST AND LAST POSTS OF EACH SECTION TO BE SET BACK TWELVE INCHES FROM THE GENERAL LINE OF POSTS, WHEN FOUR OR MORE POSTS ARE REQUIRED. REFLECTIVE MATERIAL TO BE PLACED AS DIRECTED BY THE ENGINEER. ALL WOOD MEMBERS SHALL BE GIVEN A PRESERVATIVE TREATMENT.

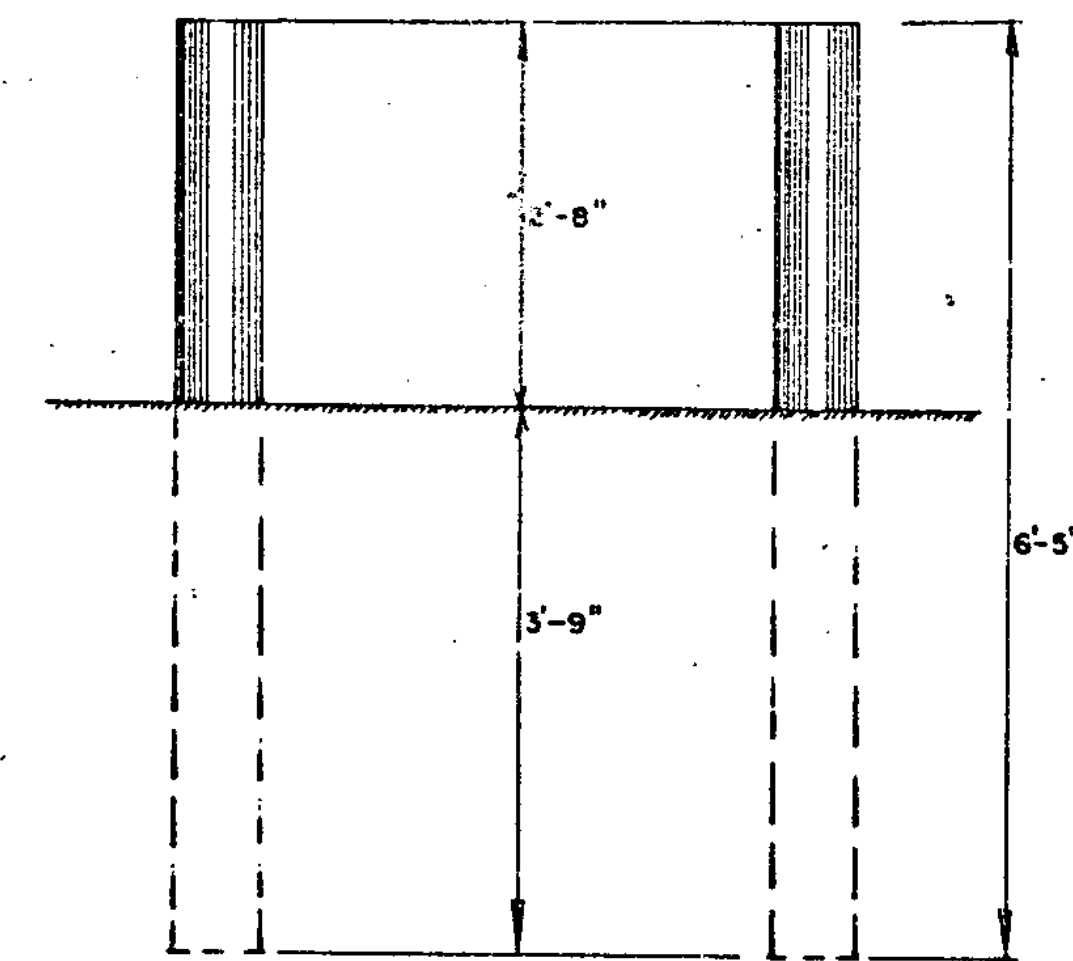
GUARD RAIL, PLANK WITH WOOD POSTS  
TO BE USED AS A BARRICADE OFF THE HIGHWAY

NOTCH TO BE TREATED WITH PRESERVATIVE BEFORE ERECTING PLANK.



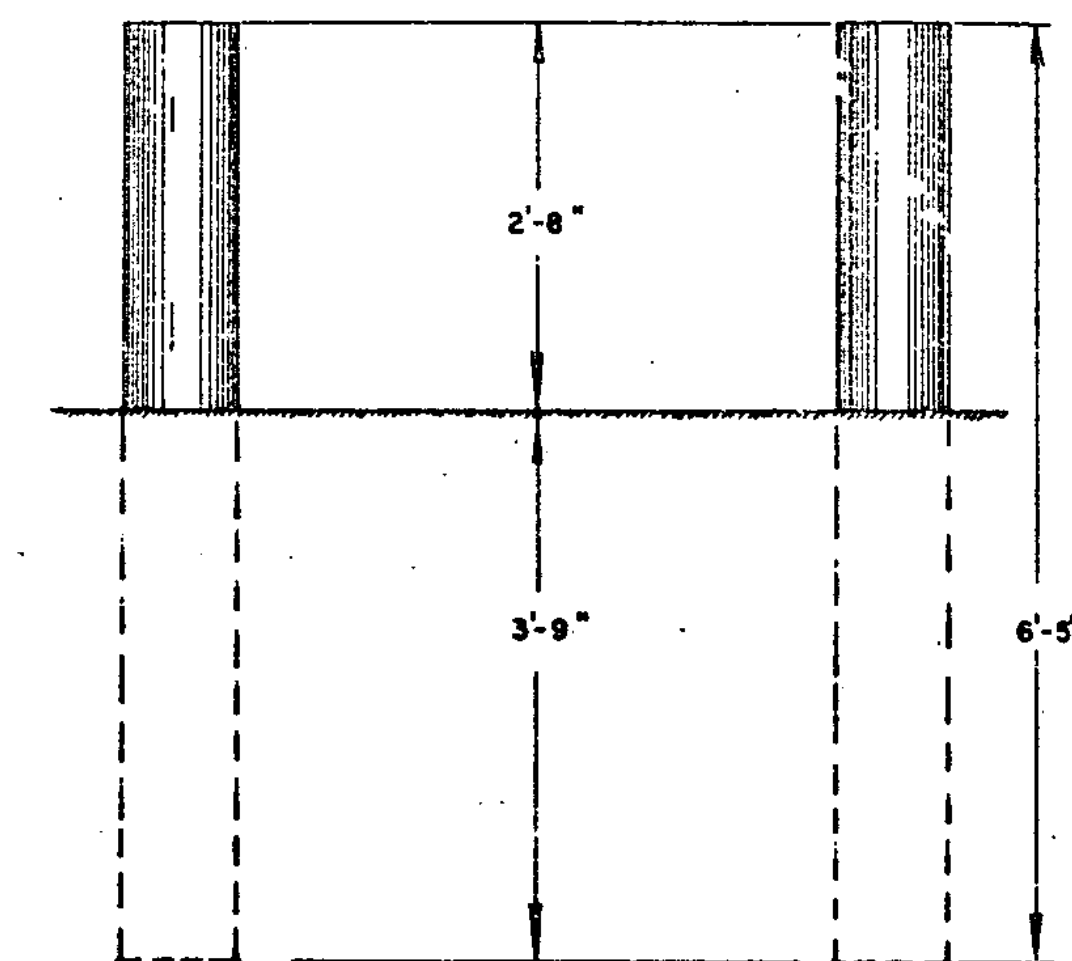
3" x 1 1/2" REFLECTIVE ALUMINUM STRIP TO BE PLACED ON EVERY OTHER WOOD POST IN A LINE OF POSTS AND CLEARLY VISIBLE TO APPROACHING TRAFFIC. STRIPS TO BE ATTACHED TO THE DESIGNATED GUARD RAIL POSTS ON BOTH SIDES OF THE ROAD AND VISIBLE TO TRAFFIC IN BOTH DIRECTIONS. REFLECTIVE MATERIAL SHALL MEET THE REQUIREMENTS OF SUBSECTION 750.09 AND SHALL BE OF ENCAPSULATED LENS SILVER OR AMBER.

DELINEATION OF WOOD GUARD RAIL AND GUIDE POSTS



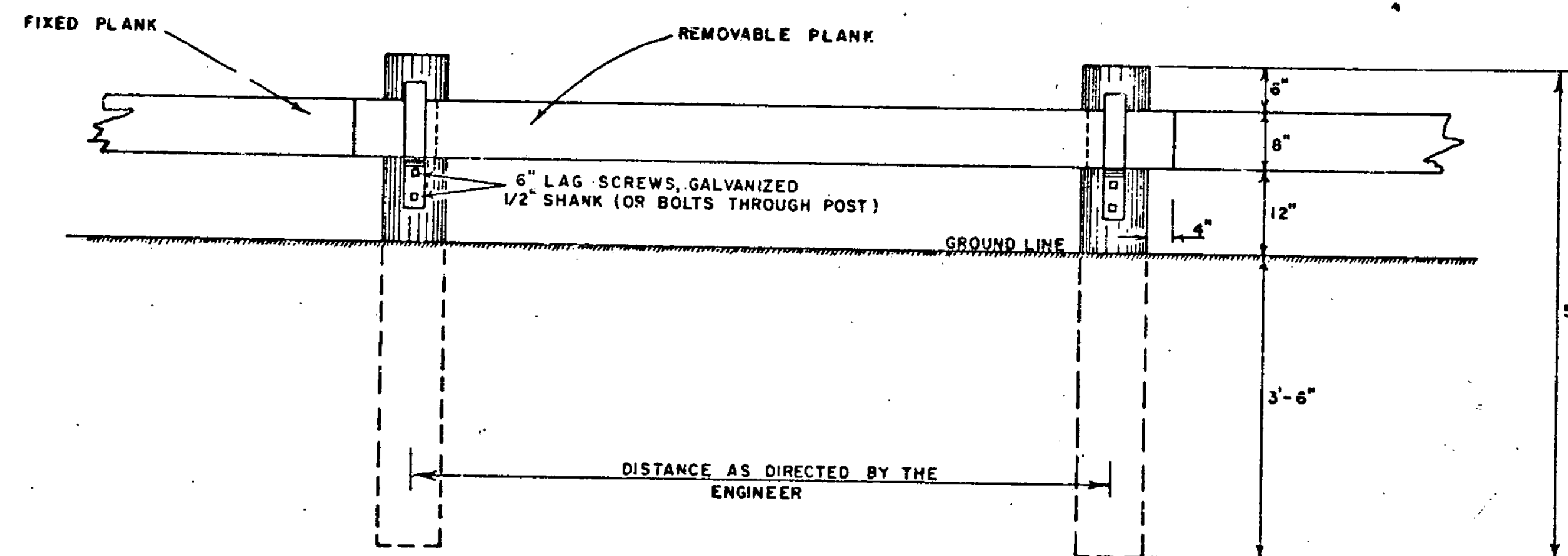
MARKER POSTS ARE TO BE 4" TO 5 1/2" IN DIAMETER AND ARE TO BE PLACED AS DIRECTED BY THE ENGINEER. POSTS SHALL BE GIVEN A PRESERVATIVE TREATMENT.

WOOD MARKER POSTS

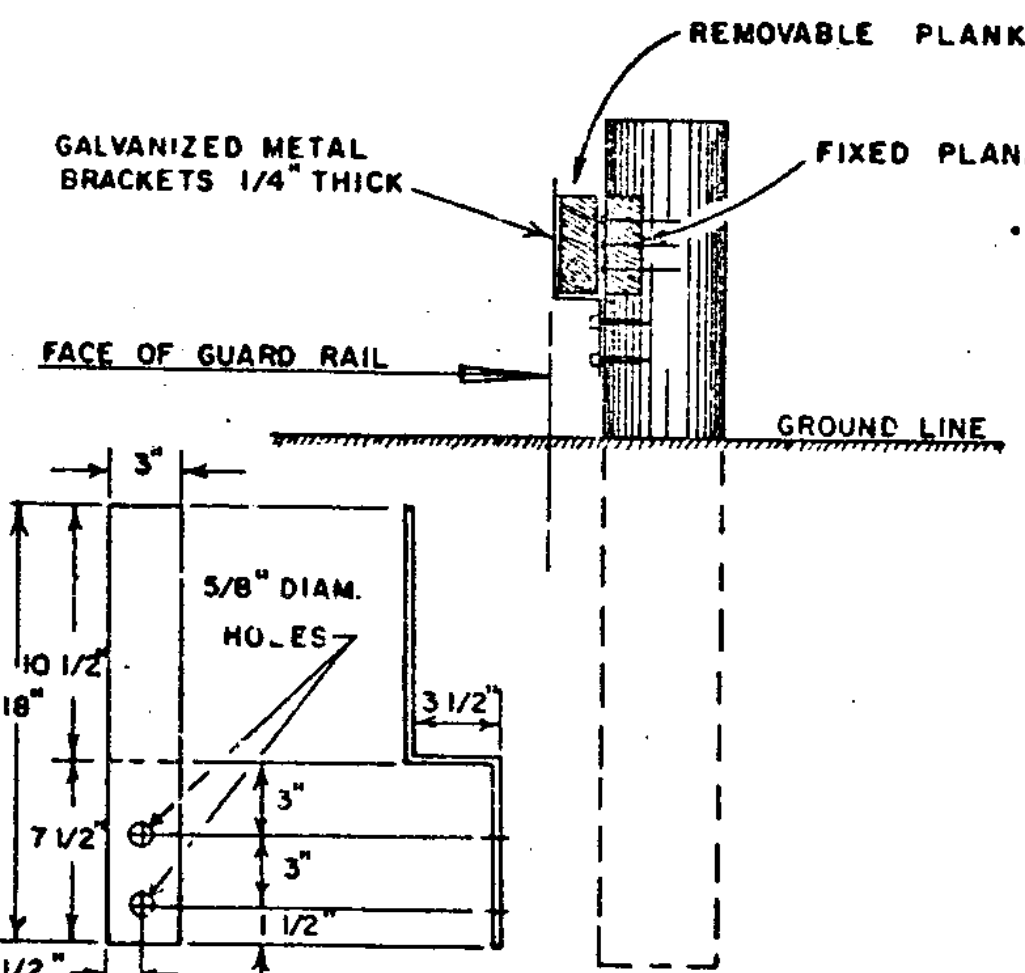


REFLECTIVE MATERIAL TO BE PLACED AS DIRECTED BY THE ENGINEER. POSTS ARE TO BE 4" TO 5 1/2" IN DIAMETER AND ARE TO BE PLACED AS DIRECTED BY THE ENGINEER. POSTS SHALL BE GIVEN A PRESERVATIVE TREATMENT.

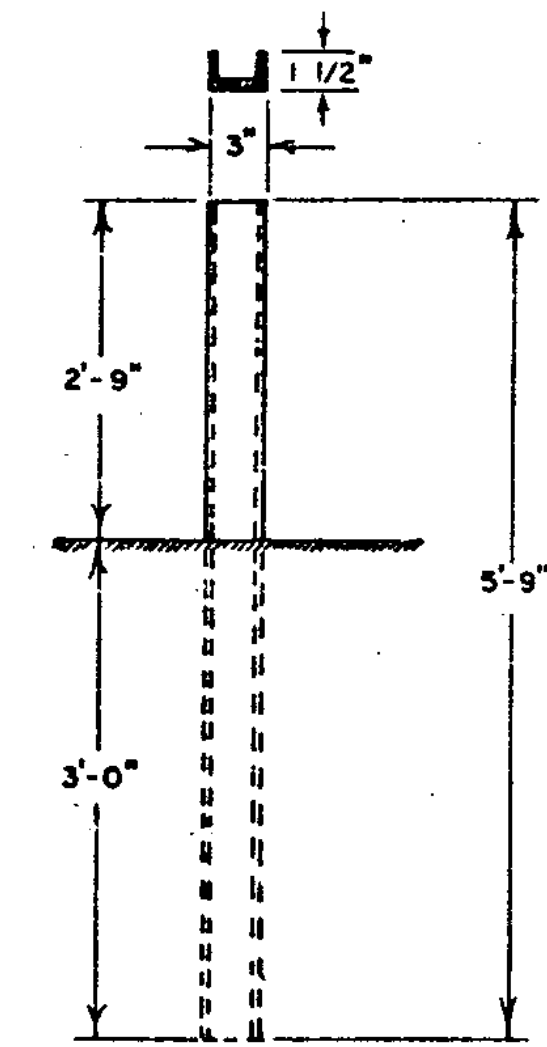
WOOD GUIDE POSTS



ENTRANCE THROUGH GUARD RAIL, PLANK WITH WOOD POSTS

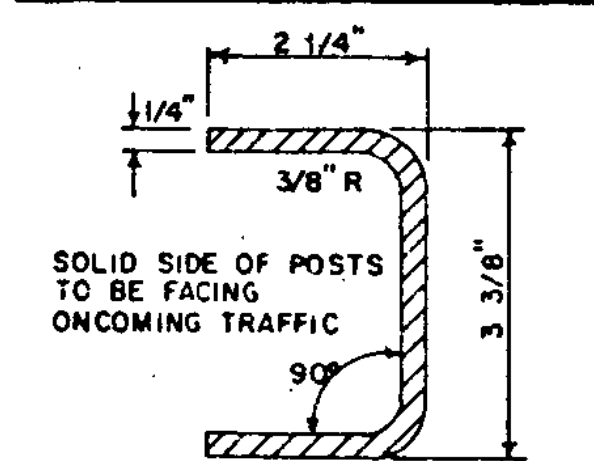
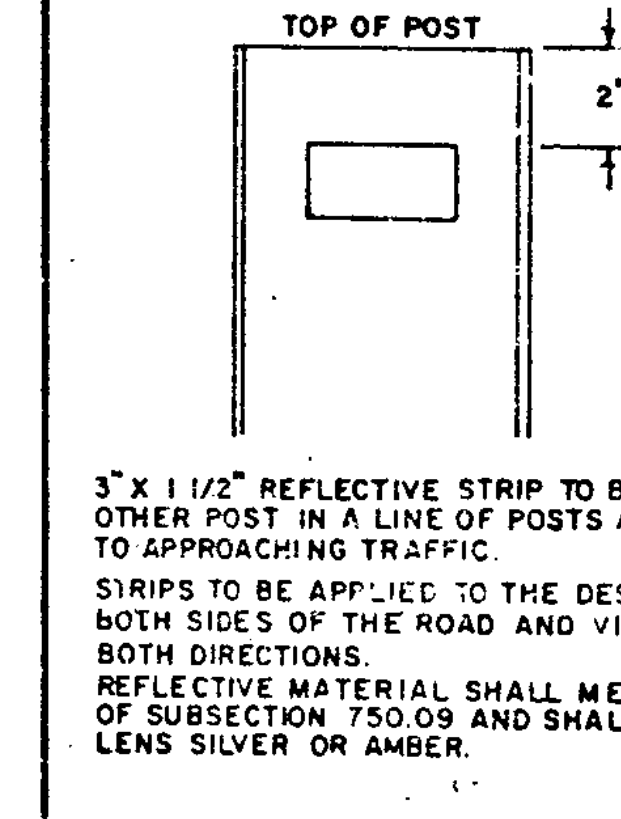


BRACKET DETAIL  
GALVANIZED METAL BRACKETS ARE TO BE INCLUDED IN THE UNIT BID PRICE FOR GUARD RAIL, PLANK WITH WOOD POSTS.

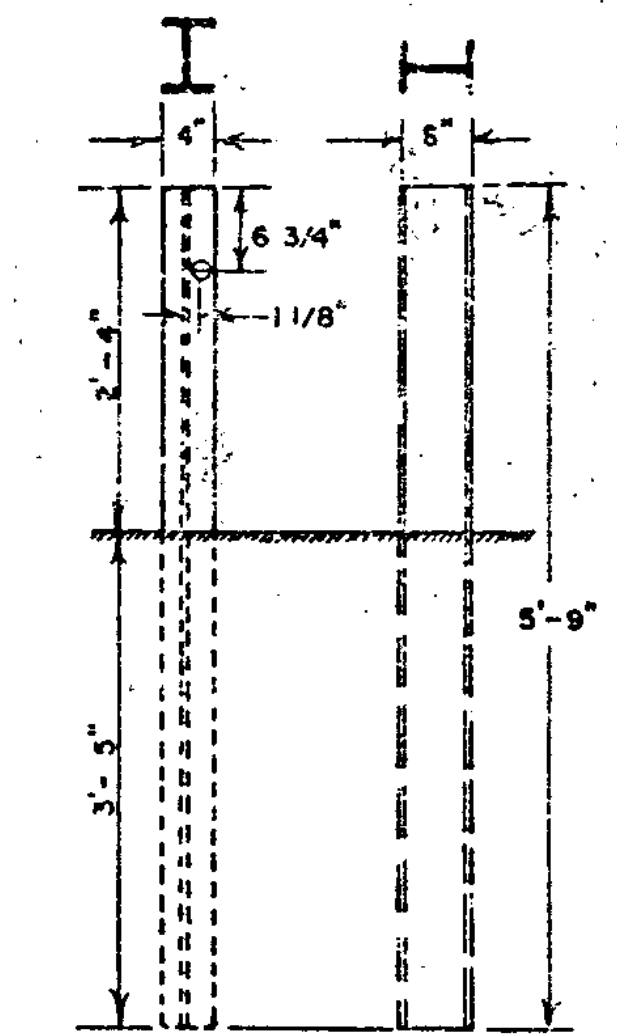


ALL STEEL MARKER POSTS TO BE GALVANIZED. STEEL MARKER POSTS TO BE PLACED AS DIRECTED BY THE ENGINEER. POSTS ARE TO BE AMERICAN STANDARD CHANNEL 5'-9" x 3" (4.1 LBS PER FT.)

STEEL MARKER POSTS



ALTERNATE POST



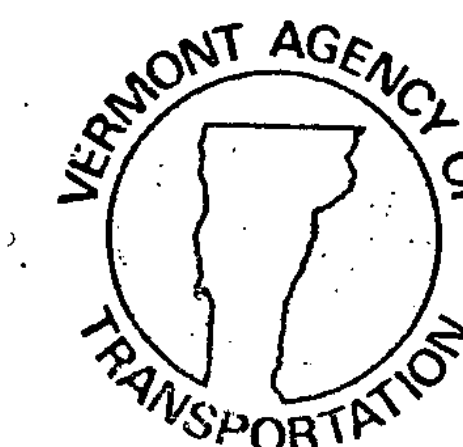
ALL STEEL GUIDE POSTS TO BE GALVANIZED. REFLECTIVE MATERIAL TO BE PLACED AS DIRECTED BY THE ENGINEER. POSTS ARE TO BE 5'-9" x 6" x 4" (8.5 LBS PER FT.) ALL POSTS IN A GIVEN RUN OF BARRIER TO BE UNIFORM.

STEEL GUIDE POSTS

REVISIONS AND CORRECTIONS  
MAY 23, 1974 ALTERNATE POST ADDED  
MAY 29, 1979 NOTE ON REFLECTIVE MATERIAL CHANGED  
JULY 23, 1980 CHANGED DIAMETER OF WOOD MARKER POST AND WOOD GUIDE POST  
MAY 25, 1982 REMOVED ALTERNATE POST DETAIL.

APPROVED DATE Dec. 6, 1977  
*R. W. Arnold*  
CHIEF ENGINEER  
*E. H. Steinhilber*  
ASS. CHIEF ENGINEER  
*G. M. Lane*  
HIGHWAY ENGINEER

GUARD RAIL, PLANK WITH WOOD POSTS  
WOOD GUIDE POSTS  
STEEL GUIDE POSTS  
WOOD MARKER POSTS  
STEEL MARKER POSTS



STANDARD  
G-4