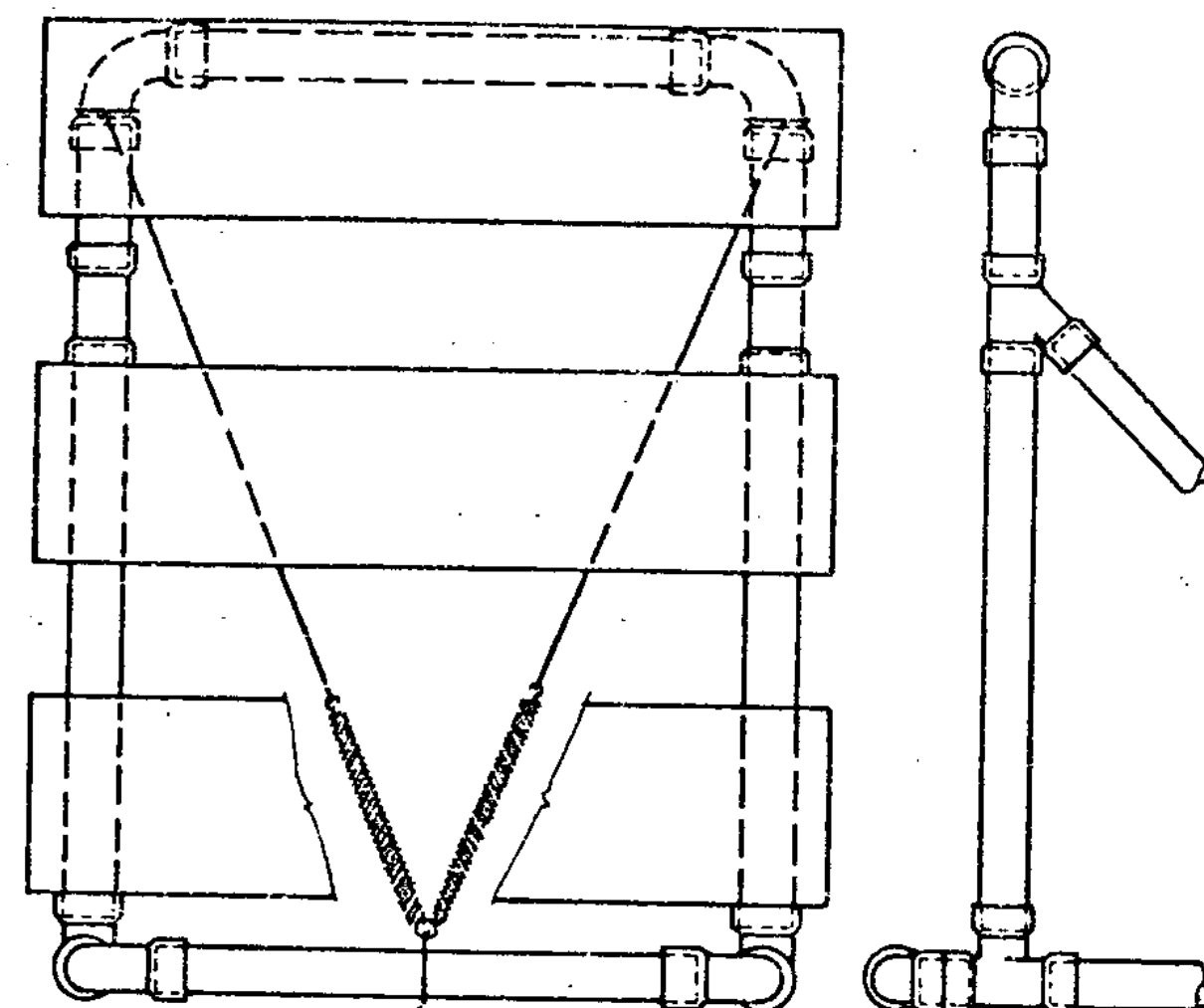
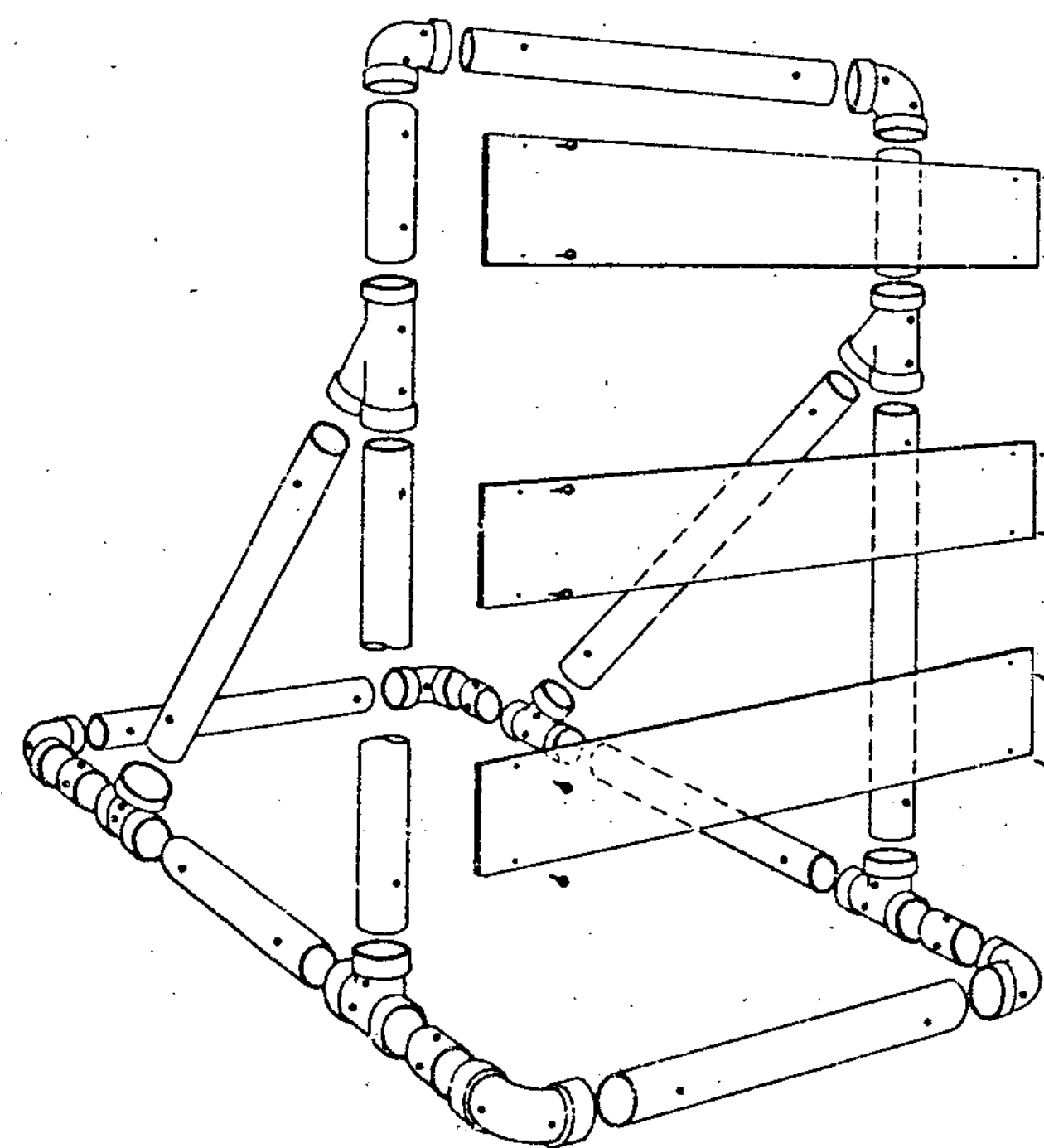


SIDE VIEW



BARRICADES SHALL BE STABILIZED WITH SAND BAGS OR FLEXIBLE CONTAINERS OF SAND WHICH WILL NOT CONSTITUTE A HAZARD WHEN BARRICADE IS HIT. STABILIZERS SHALL BE SO PLACED AS NOT TO BE A HAZARD TO VEHICLES PASSING ON EITHER SIDE. IF BARRICADE REPLACEMENT COSTS CAN BE CONSIDERED NEGLIGIBLE, GLUED JOINTS MAY PROVIDE ADDITIONAL STABILITY TO THE INSTALLATION.



BARRICADE ASSEMBLY

MATERIALS LIST FOR ONE BARRICADE

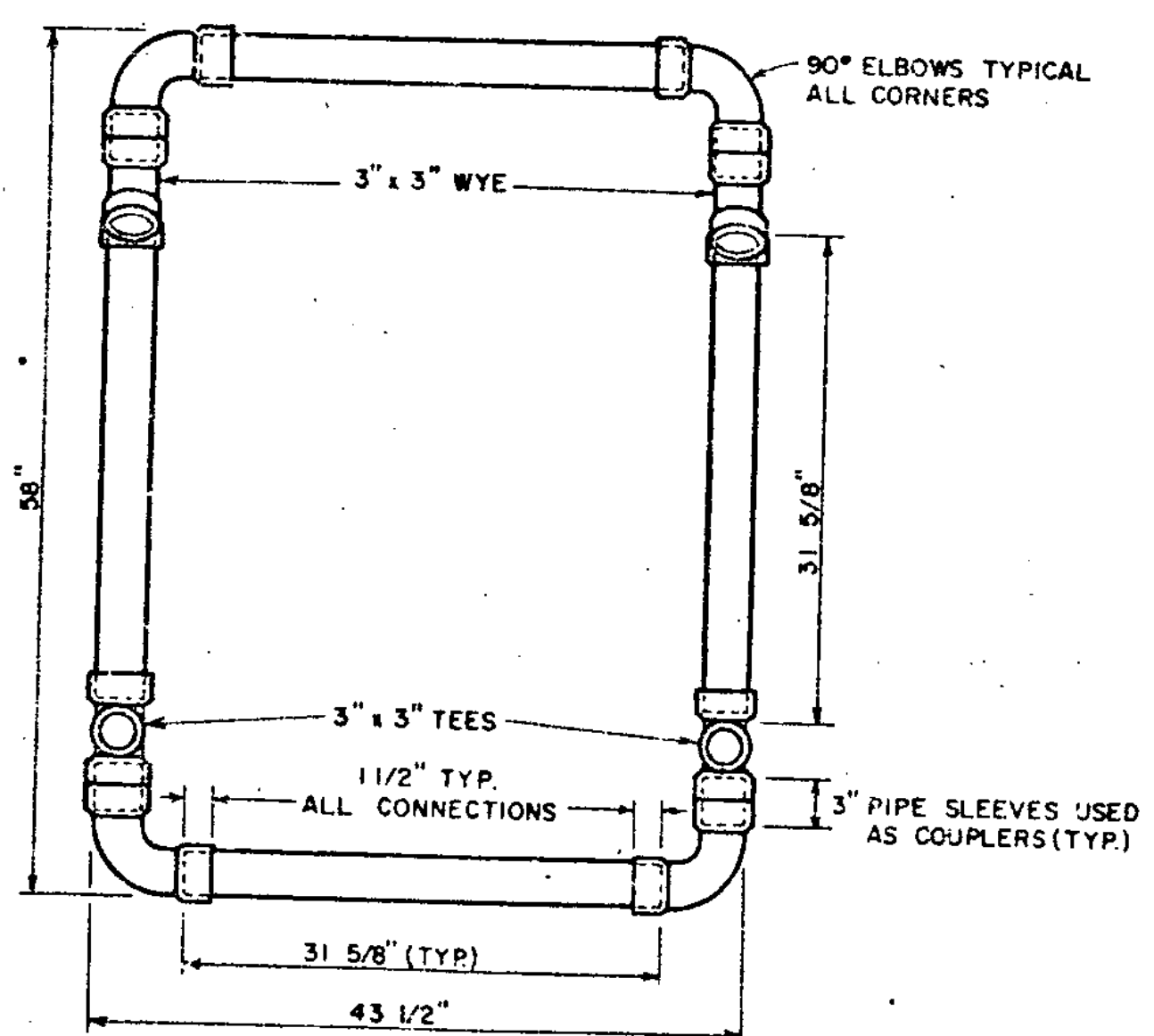
3" Diameter Pipe	30 LF
3" 1/4 Bend Elbow	6 EA
3" Tees	2 EA
3" Wyes	4 EA
9" x 48" x 0.25 Barricade Panels	3 EA
5/8" x 11" No. 8 Spring	2 EA
1" No. 14 Pan Head Metal Screws	12 EA
No. 14 Black Annealed Tie Wire	15 LF

MATERIALS
The pipe, wyes, tees and elbows used to construct Barricades shall conform to the requirements of ASTM designation D 2241 for P.V.C. 1120 or 1220 SDR-21, pressure rating 200 p.s.i. The Wyes, tees and elbows shall conform to the requirements of ASTM Designation D 2466, Type II, Grade 1. All joints shall be slip-fit and may be lightly cemented. The 9" x 48" barricade rails shall be fabricated from 0.025" anodized aluminum and shall have reflectorized alternate orange and white stripes (sloping downward at an angle of 45 degrees in the direction traffic is to pass).

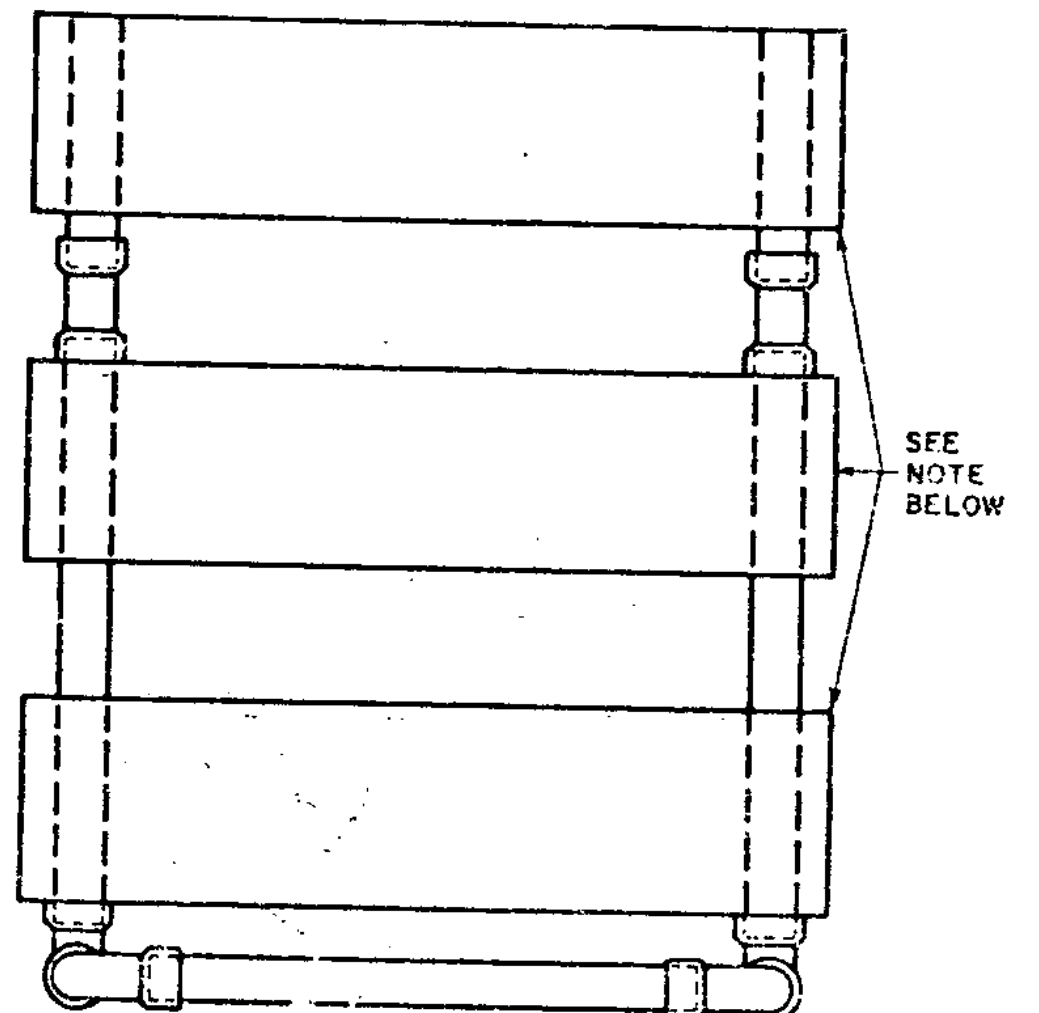
COLORS
The barricades shown on the sheet shall have reflectorized orange and white stripes. The orange shall conform with the standard color adopted by the American Association of State Highway And Transportation Officials and approved by the U.S. Department of Transportation, Federal Highway Administration.

LOCATION
The barricades shown on this sheet will be located by the Engineer in the field or as shown on the plans. The locations of the barricades shall follow the procedures set forth in the Manual on Uniform Traffic Control Devices.

MAINTENANCE
Barricades shall be maintained in clean and legible conditions satisfactory to the Engineer. They shall be completely visible to approaching traffic at all times. Damaged, defaced, or dirty barricades shall be repaired cleaned or replaced as ordered by the Engineer. The P.V.C. Pipe and fittings shall be white in color. If the fittings are not available, other colors may be substituted. At least two (2) holes shall be drilled (3/16" to 1/4") in each section of pipe and fittings if the assembly is not cemented.

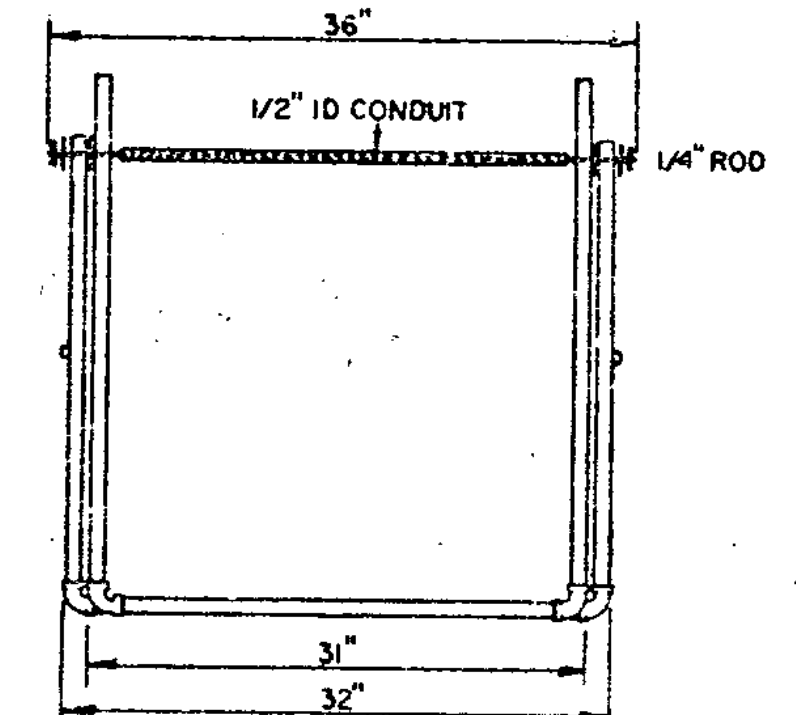


TOP VIEW OF BASE

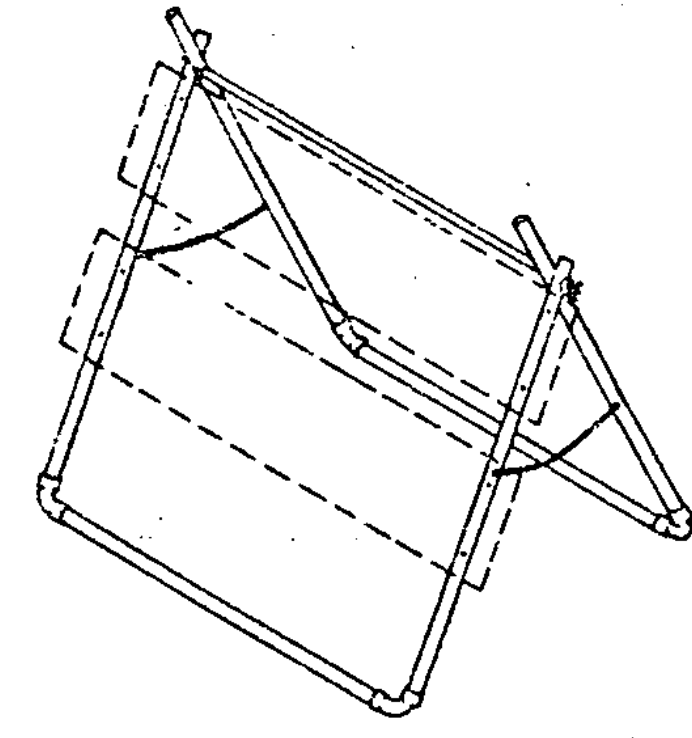
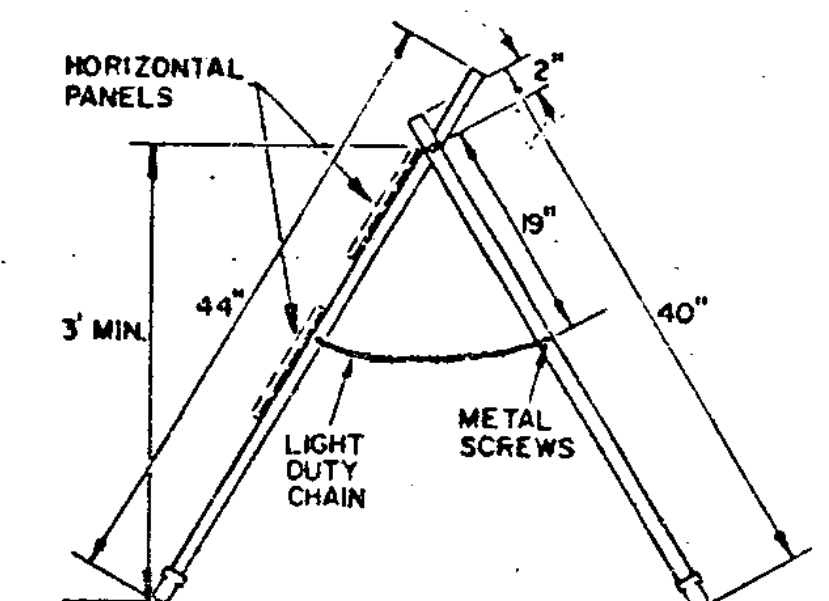


FRONT VIEW

NOTE - 9" x 48" BARRICADE HAZARD PANELS ORANGE AND WHITE RIGHT OR LEFT. (0.025 ANODIZED ALUMINUM). PANELS ATTACHED WITH 1" NO. 14 PAN HEAD METAL SCREW.



MATERIALS FOR TYPE I & II BARRICADES
20'-1" PVC
4'-1" PVC 90° ELBOWS
30'-1/2" ID THINWALL CONDUIT
36'-1/4" STEEL ROD
4-1" WASHERS
24'- LIGHT DUTY CHAIN
4- METAL SCREWS
2-3/4" COTTER PINS



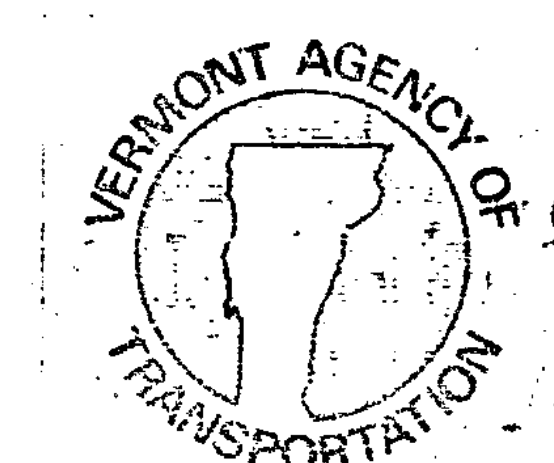
TYPE I & II BARRICADE DETAILS

TYPE I BARRICADES SHALL CONSIST OF ONE HORIZONTAL PANEL. TYPE II BARRICADES SHALL CONSIST OF AN ADDITIONAL HORIZONTAL PANEL MOUNTED BELOW THE OTHER. SEE STD E-7 FOR USE REQUIREMENTS.

REVISIONS & CORRECTIONS
JAN. 11, 1977 - REVISED ACCORDING TO FHWA REQUIREMENTS.
JUNE 8, 1977 - MATERIALS LIST ADDED.
APR. 8, 1982 - CEMENTING NOTE AND BARRICADES TYPE I & II ADDED.

APPROVED
DATE Dec 30, 1976
E. H. Stickney
CHIEF ENGINEER
R. O. Munn
ASST. CHIEF ENGINEER
Loren C. Jones
HIGHWAY ENGINEER

TRAFFIC SIGNS
BREAKAWAY BARRICADE DETAILS



STANDARD E-7A