

OFFSET BLOCK CHART FOR (NW) & (SE) APPROACHES
CURB CONDITION - POSTS P1L - P4L

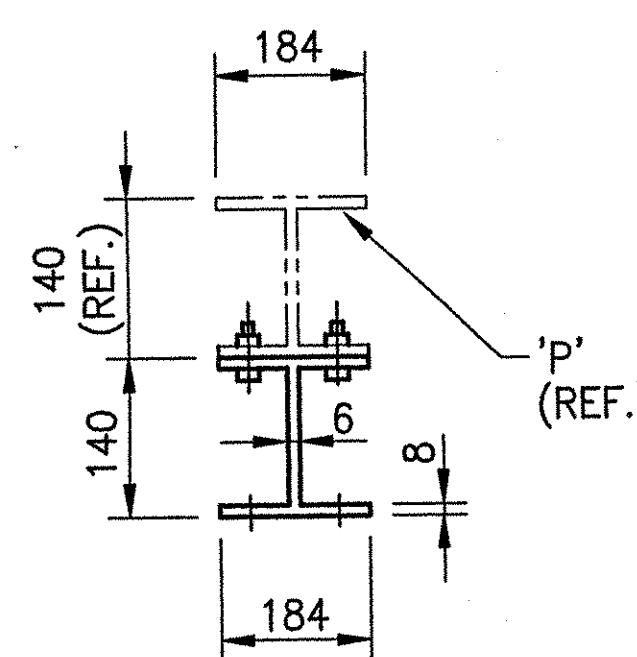
OFFSET BLOCK ~ POST MTG. DIMENSIONS										BEV
POST No.	OFFSET BLOCK	QTY.	A	B	C	D	E	F (O.C.)	G	X
P1L	OB1L	2	850	774	340	49	17	841	32	9
P2L	OB2L	2	774	696	294	49	17	765	32	
P3L	OB3L	2	697	617	248	49	17	689	32	
P4L	OB4L	2	621	539	203	49	17	613	32	

OFFSET BLOCK ~ RAIL MTG. DIMENSIONS							
POST No.	OFFSET BLOCK	H	J	K	L	M	N
P1L	OB1L	27	316	752	22	305	737
P2L	OB2L	27	270	674	22	259	658
P3L	OB3L	27	224	595	22	213	580
P4L	OB4L	27	178	517	22	167	205

OFFSET BLOCK CHART FOR (NE) & (SW) APPROACHES
CURB CONDITION - POSTS P1R - P4R

OFFSET BLOCK ~ POST MTG. DIMENSIONS										BEV
POST No.	OFFSET BLOCK	QTY.	A	B	C	D	E	F (O.C.)	G	X
P1R	OB1R	2	850	774	340	49	17	841	32	9
P2R	OB2R	2	774	696	294	49	17	765	32	
P3R	OB3R	2	697	617	248	49	17	689	32	
P4R	OB4R	2	621	539	203	49	17	613	32	

OFFSET BLOCK ~ RAIL MTG. DIMENSIONS							
POST No.	OFFSET BLOCK	H	J	K	L	M	N
P1R	OB1R	27	316	752	22	305	737
P2R	OB2R	27	270	674	22	259	658
P3R	OB3R	27	224	595	22	213	580
P4R	OB4R	27	178	517	22	167	205



TYP. SECT. POST &
OFFSET BLOCK

NOTE:

2 CLAMPING BARS CB-01-B (#28596) PER POSTS P1-P4
4 CLAMPING BARS CB-03-A (#19447) PER POSTS P1-P4
w/ 1/2" - 13 UNC S.S. BOLT x 1" LG. 'FB1', 1 1/16" O.D. x 17/32" I.D. x 3/32" THK. ALUM WASHER 'FW1' (#22935 & # 19404) (16 PER POST)

NOTE:

4 CLAMPING BARS CB-03-A (#19447) PER POSTS P5-P7
w/ 13 (1/2" - 13 UNC) S.S. BOLT x 25 (1") LG. 'FB1', 27 (1 1/16") O.D. x 13 (17/32") I.D. x 2 (3/32") THK. ALUM WASHER 'FW1' (#22935 & # 19404) (8 PER POST)

ANODIZED
(SEE LB1 FOR SPECIFICATIONS)

RECEIVED
OK'D BY: _____ OK'D BY: _____
FEB 23 2006
RESUBMIT _____ APPROVED _____
BY: *WJ P/S* DATE: 2/23/06

REV.	DESCRIPTION	BY	DATE

PROJ. No. BRS 0113 (22) ITEM No: 621.74

APPROVED: _____ REC'D APPROVAL _____
DRAWING _____

L.B. FOSTER COMPANY
1016 GREENTREE ROAD
PITTSBURGH, PENNSYLVANIA 15220

FOR: A. D. ROSSI CORPORATION
VERMONT AGENCY OF TRANSPORTATION
TOWN OF HARTLAND, COUNTY OF WINDSOR
3L APPROACH RAIL FOR BRIDGE #60 - US RTE 5 OVER LULLS BROOK
OFFSET BOX DETAILS - NW, NE, SW & SE APPROACHES

MADE CMS DATE 05/24/05 JOB No. ARO200 CUST. No. _____
CHECK Dd DATE 11/7/05 DRAWING LB10 REV. No. _____