

POST DETAIL CHART FOR NW & SE APPROACHES
CURB CONDITION

| POST No. | QTY. | OFFSET BLOCK MTG. DIMENSIONS | | | | | | | BEV |
|----------|------|------------------------------|-----|-----|----|----|----------|----------|-----|
| | | A | B | C | D | E | F (O.C.) | G (O.C.) | X |
| P1L | 2 | 48 | 340 | 774 | 17 | 32 | 1270 | 1980 | 9 |
| P2L | 2 | 48 | 294 | 696 | 17 | 32 | 1185 | 1980 | 9 |
| P3L | 2 | 48 | 248 | 617 | 17 | 32 | 1099 | 1980 | 9 |
| P4L | 2 | 48 | 203 | 539 | 17 | 32 | 1014 | 1980 | 9 |
| P5L | 2 | 56 | 348 | | 8 | 48 | 819 | 1830 | 4 |
| P6L | 2 | 56 | 305 | | 8 | 48 | 766 | 1830 | 4 |
| P7L | 2 | 56 | 262 | | 8 | 48 | 713 | 1830 | 4 |
| P8L | 3 | 52 | 246 | | 0 | 52 | 699 | 1830 | SQ |

POST DETAIL CHART FOR NE & SW APPROACHES
CURB CONDITION

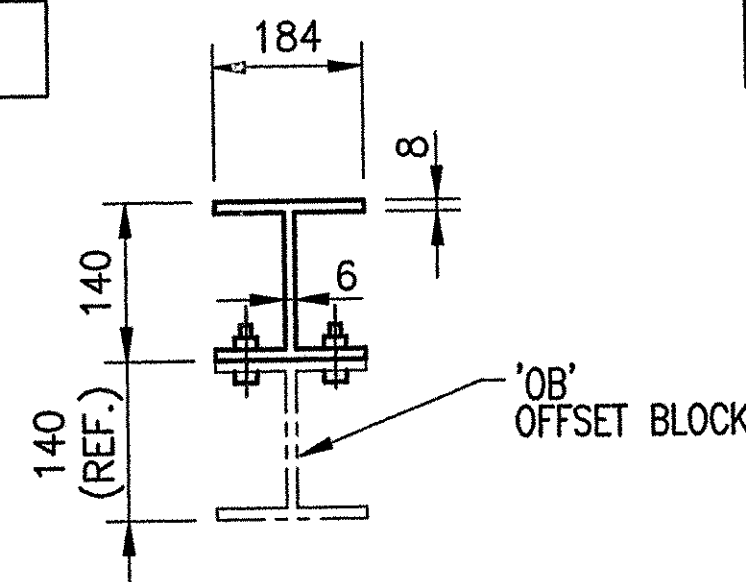
| POST No. | QTY. | OFFSET BLOCK MTG. DIMENSIONS | | | | | | | BEV |
|----------|------|------------------------------|-----|-----|----|----|----------|----------|-----|
| | | A | B | C | D | E | F (O.C.) | G (O.C.) | X |
| P1R | 2 | 48 | 340 | 774 | 17 | 32 | 1270 | 1980 | 9 |
| P2R | 2 | 48 | 294 | 696 | 17 | 32 | 1185 | 1980 | 9 |
| P3R | 2 | 48 | 248 | 617 | 17 | 32 | 1099 | 1980 | 9 |
| P4R | 2 | 48 | 203 | 539 | 17 | 32 | 1014 | 1980 | 9 |
| P5R | 2 | 56 | 348 | | 8 | 48 | 819 | 1830 | 4 |
| P6R | 2 | 56 | 305 | | 8 | 48 | 766 | 1830 | 4 |
| P7R | 2 | 56 | 262 | | 8 | 48 | 713 | 1830 | 4 |
| P8R | 1 | 52 | 246 | | 0 | 52 | 699 | 1830 | SQ |

NOTE:

2 CLAMPING BARS CB-01-B (#28596) PER POSTS P1-P4
4 CLAMPING BARS CB-03-A (#19447) PER POSTS P1-P4
w/ 1/2" φ-13 UNC
S.S. BOLT x 1" LG. 'FB1',
1 1/16" O.D. x 17/32"
I.D. x 3/32" THK. ALUM
WASHER 'FW1'
(#22935 & # 19404)
(16 PER POST)

NOTE:

4 CLAMPING BARS CB-03-A (#19447) PER POSTS P5-P7
w/ 13 (1/2" φ-13 UNC)
S.S. BOLT x 25 (1") LG. 'FB1',
27 (1 1/16" O.D. x 13 (17/32")
I.D. x 2 (3/32") THK. ALUM
WASHER 'FW1'
(#22935 & # 19404)
(8 PER POST)



TYP. SECT. POST &
OFFSET BLOCK

ANODIZED
(SEE LB1 FOR SPECIFICATIONS)

RECEIVED
CHK'D BY _____ OK'D BY _____
FEB 23 2006
RESUBMIT _____ APPROVED _____
BY *WJ* DATE 2/23/06

| REV. | DESCRIPTION | BY | DATE |
|------|-------------|----|------|
| | | | |

PROJ. No. BRS 0113 (22) ITEM No: 621.74

APPROVED: _____ REC'D APPROVAL _____
DRAWING _____

L.B. FOSTER COMPANY
1016 GREENTREE ROAD
PITTSBURGH, PENNSYLVANIA 15220

FOR: A. D. ROSSI CORPORATION
VERMONT AGENCY OF TRANSPORTATION
TOWN OF HARTLAND, COUNTY OF WINDSOR
BRIDGE #60 - US RTE 5 OVER LULLS BROOK
3L ALUMINUM APPROACH RAIL POST DETAILS

MADE CMS DATE 09/01/05 JOB No. AR0200 CUST. No. _____
CHECK_Dd DATE 11/7/05 DRAWING LB9 REV. No. _____