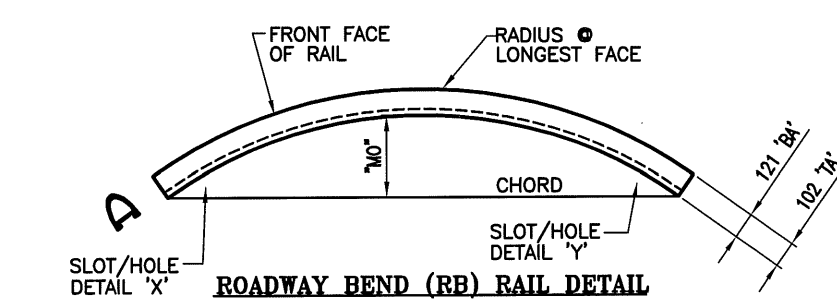


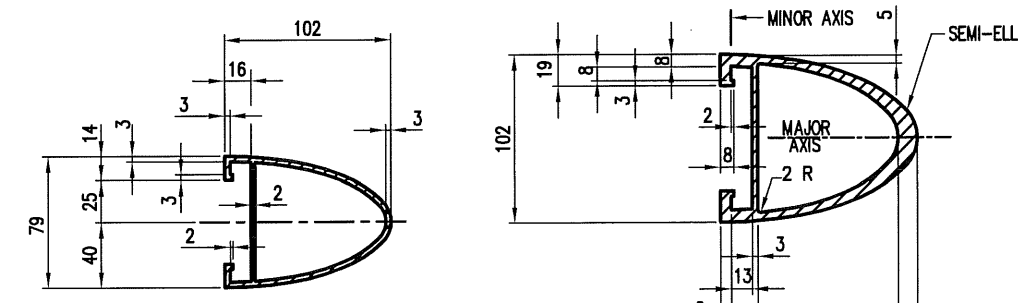
ROADWAY BEND (RB) RAIL DETAIL

RAIL MK.	QTY.	LENGTH ALONG FF RAILING	RADIUS @ FF RAIL	MO	CHORD	SLOT/HOLE DETAIL 'X'	SLOT/HOLE DETAIL 'Y'
TA4	4	7302	105.221	63	7294		
BA4	8	7302	105.221	63	7292	DET. A	DET. B
TAB	1	5635	105.221	38	5629		
BAB	2	5635	105.221	38	5628	DET. C	DET. B

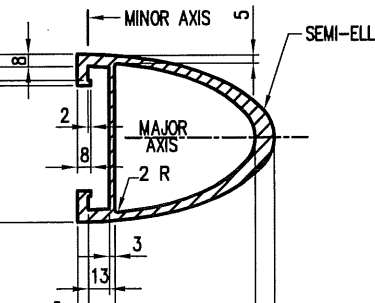


ROADWAY BEND (RB) RAIL DETAIL

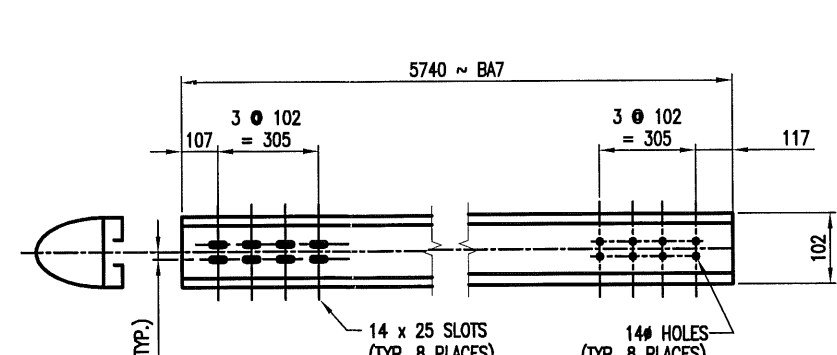
RAIL MK.	QTY.	LENGTH ALONG FF RAILING	RADIUS @ FF RAIL	MO	CHORD	SLOT/HOLE DETAIL 'X'	SLOT/HOLE DETAIL 'Y'
TA1	2	9732	94.881	125	9717		
BA1	2	9732	94.900	125	9717	DET. B	DET. A
BA10	2	9732	94.900	125	9717	DET. C	DET. A
TA5	4	7293	94.881	70	7283		
BA5	6	7293	94.900	70	7283	DET. B	DET. A
BA11	2	7293	94.900	70	7283	DET. B	DET. D
TA6	1	8714	94.881	100	8701		
BA6	2	8714	94.900	100	8701	DET. B	DET. C



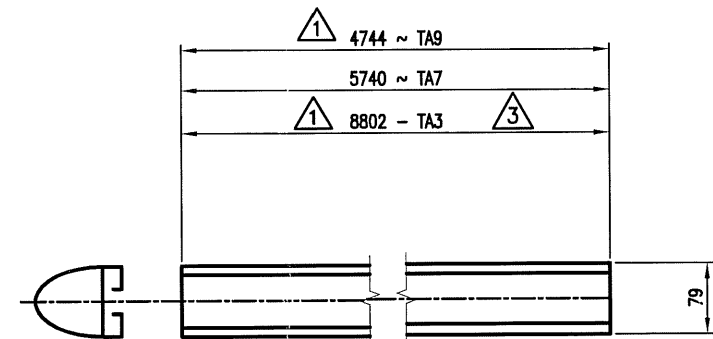
TYPICAL SECTION (HANDRAIL) #19464



TYPICAL SECTION (BARRIER RAIL) #19466



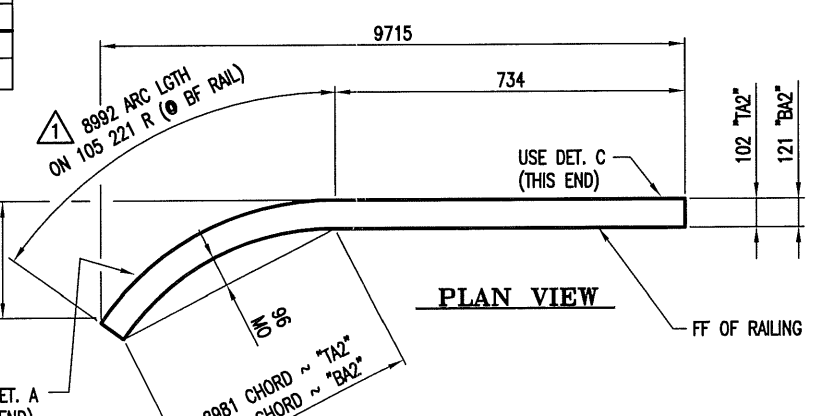
2 REQ'D - BARRIER RAIL 'BA7' (BACK ELEVATION VIEW)



1 REQ'D - HANDRAIL 'TA3' (BACK ELEVATION VIEW)

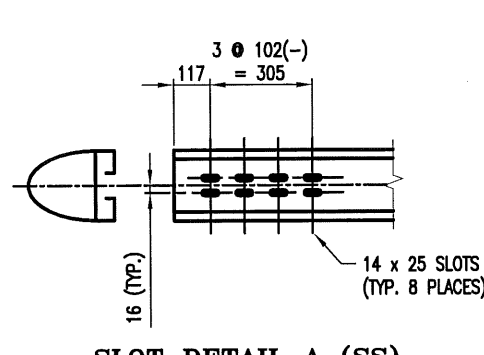
1 REQ'D - HANDRAIL 'TA7' (BACK ELEVATION VIEW)

1 REQ'D - HANDRAIL 'TA9' (BACK ELEVATION VIEW)

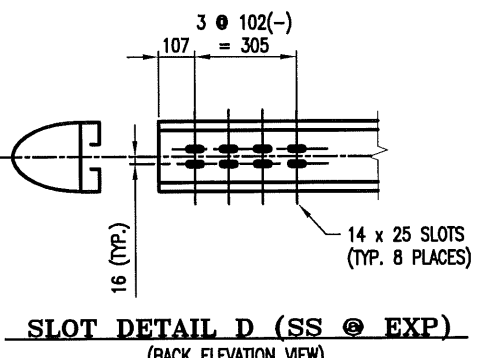


1 REQ'D - HANDRAIL 'TA2' (LENGTH ALONG LONGEST EDGE = 9728 (+610 FOR SHOP BENDING = 10 336))

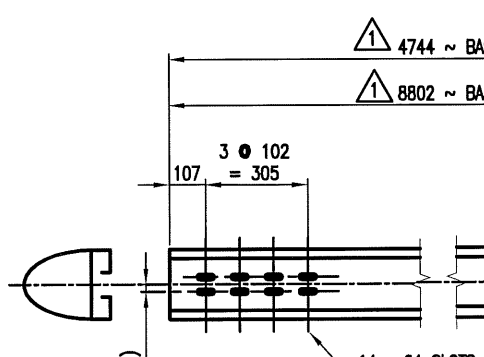
2 REQ'D - BARRIER RAIL 'BA2' (LENGTH ALONG LONGEST EDGE = 9728 (+610 FOR SHOP BENDING = 10 336))



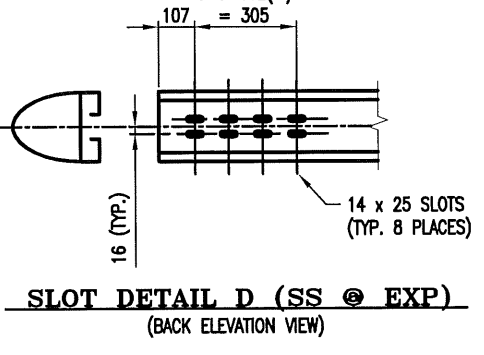
SLOT DETAIL A (SS) (BACK ELEVATION VIEW)



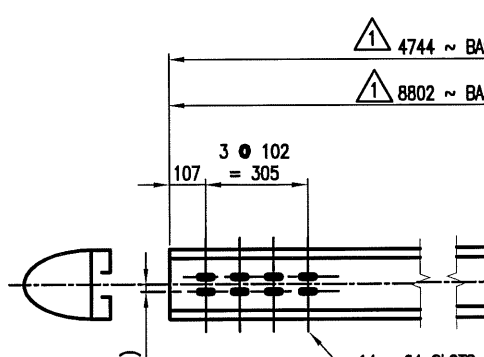
SLOT DETAIL D (SS @ EXP) (BACK ELEVATION VIEW)



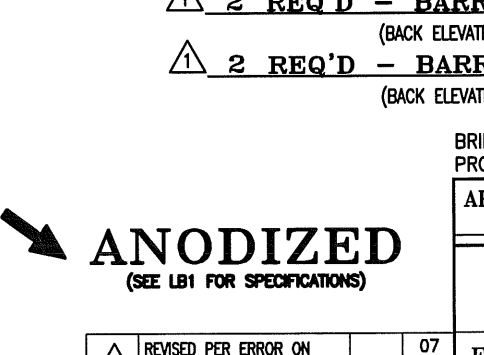
HOLE DETAIL B (H) (BACK ELEVATION VIEW)



SLOT DETAIL C (IS @ EXP) (BACK ELEVATION VIEW)



2 REQ'D - BARRIER RAIL 'BA3' (BACK ELEVATION VIEW)



2 REQ'D - BARRIER RAIL 'BA9' (BACK ELEVATION VIEW)

BRIDGE No. 60
PROJ. No. BRS 0113 (22) ITEM 525.22

APPROVED: _____ REC'D APPROVAL

L.B. FOSTER COMPANY DRAWING

1018 GREENHURST ROAD

PITTSBURGH, PENNSYLVANIA 15220

FOR: A. D. ROSSI CORPORATION

VERMONT AGENCY OF TRANSPORTATION

TOWN OF HARTLAND, COUNTY OF WINDSOR

3-LINE SEMI-ELLIP. ALUMINUM BRIDGE RAIL FOR U.S. RTE. 5

OVER LULLS BROOK - RAIL DETAILS

MADE C.M.S. DATE 09/26/05 JOB No. AR0200 CUST. No.

CHECKED DATE 11/27/05 DRAWING 183 REF. No. 3

ANODIZED (SEE LIST FOR SPECIFICATIONS)

REVISED PER ERROR ON ARC LENGTH L&Z SOUTH

REVISED PER VDOT CHG IN BRIDGE LENGTHS

REVISED DIMENSIONS OF 1/4" BA1 & BA10 PER ENG ERROR

REVISED PER VDOT CHG IN BRIDGE LENGTHS

REVISED PER VDOT CHG IN BRIDGE LENGTHS

REVISED PER VDOT CHG IN BRIDGE LENGTHS

REVISED PER VDOT CHG IN BRIDGE LENGTHS

REVISED PER VDOT CHG IN BRIDGE LENGTHS