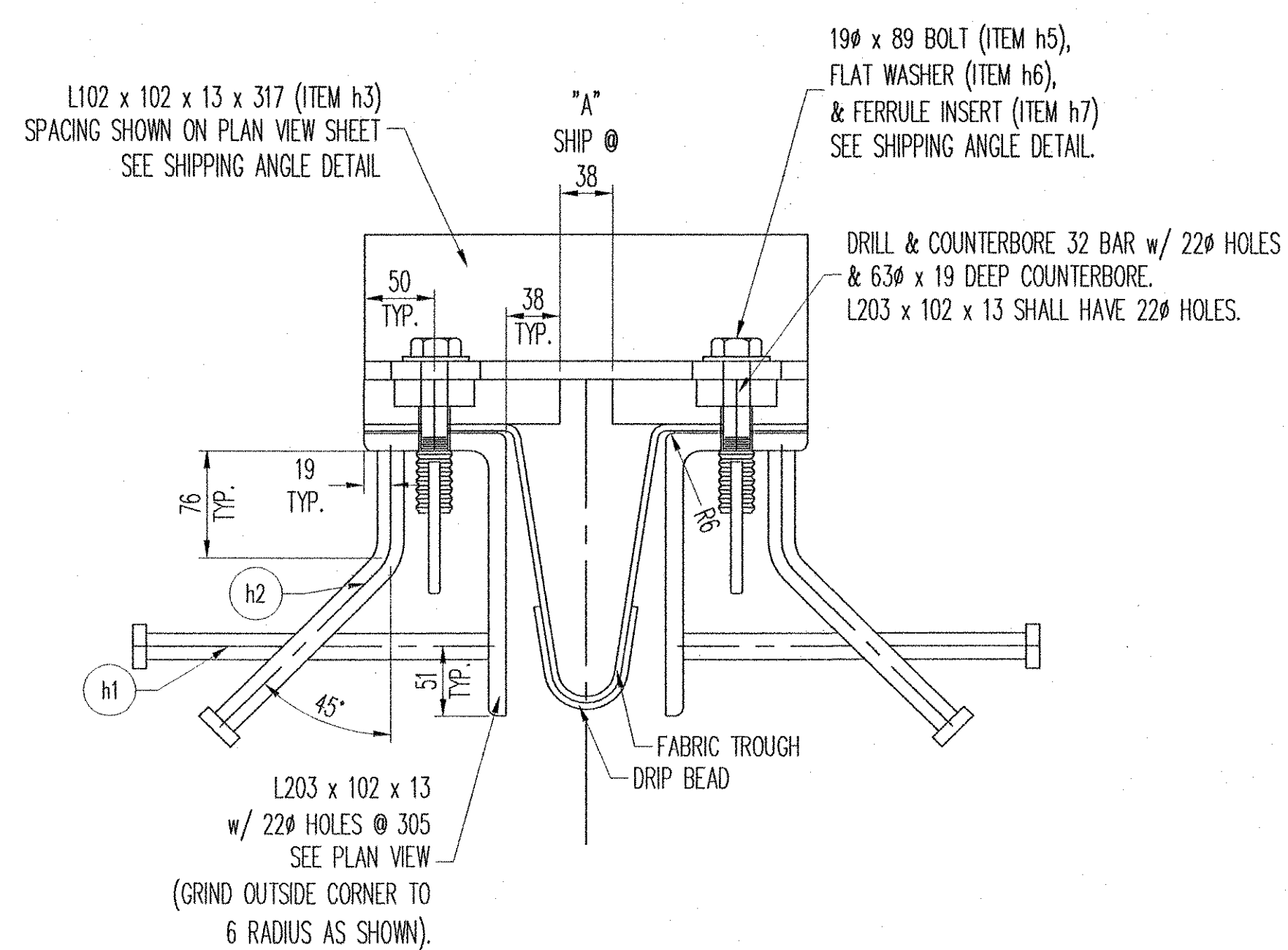


SECTION THRU JOINT AT GIRDER

* DIMENSION IS THEORETICAL AND MAY CHANGE DEPENDING UPON THE OUTCOME OF THE BEAM PROFILES.

TEMP.	"A" DIST.
-18° C	51
-9° C	47
-1° C	42
7° C	38
16° C	34
24° C	30
32° C	25
41° C	21



SECTION THRU JOINT

GENERAL NOTES

ALL MATERIALS AND CONSTRUCTION SHALL CONFORM TO THE STATE OF VERMONT AGENCY OF TRANSPORTATION STANDARD SPECIFICATIONS FOR HIGHWAY AND BRIDGE CONSTRUCTION (DATED 2001), AND IT'S LATEST REVISIONS, AND THE AASHTO STANDARD SPECIFICATIONS FOR HIGHWAY BRIDGES, AND IT'S LATEST REVISIONS. GENERAL SHOP PRACTICES, STRUCTURAL FABRICATION, WELDING AND ASSEMBLY SHALL BE GOVERNED BY ANSI/AASHTO/AWS/ D1.5 BRIDGE WELDING CODE.

ADDITIONAL SHOP SPLICES SHALL BE PERMITTED IN EACH ASSEMBLY, PROVIDED THAT NO PIECE IS LESS THAN 610mm IN LENGTH.

STUD ANCHORS SHALL BE AASHTO M169 (ASTM-A108) AND AUTOMATIC END WELDED WITH COMPLETE FUSION. A-FF-STUD-REP-01 / A-(MC)GF-STUD-REP-01 OR A-SM-STUD-REP-01 WILL BE USED, AS REQUIRED, TO REPAIR STUDS.

ANY TIGHTLY ADHERENT WELD SPATTER NEED NOT BE REMOVED IN COATING AREAS TO BE CAST IN CONCRETE.

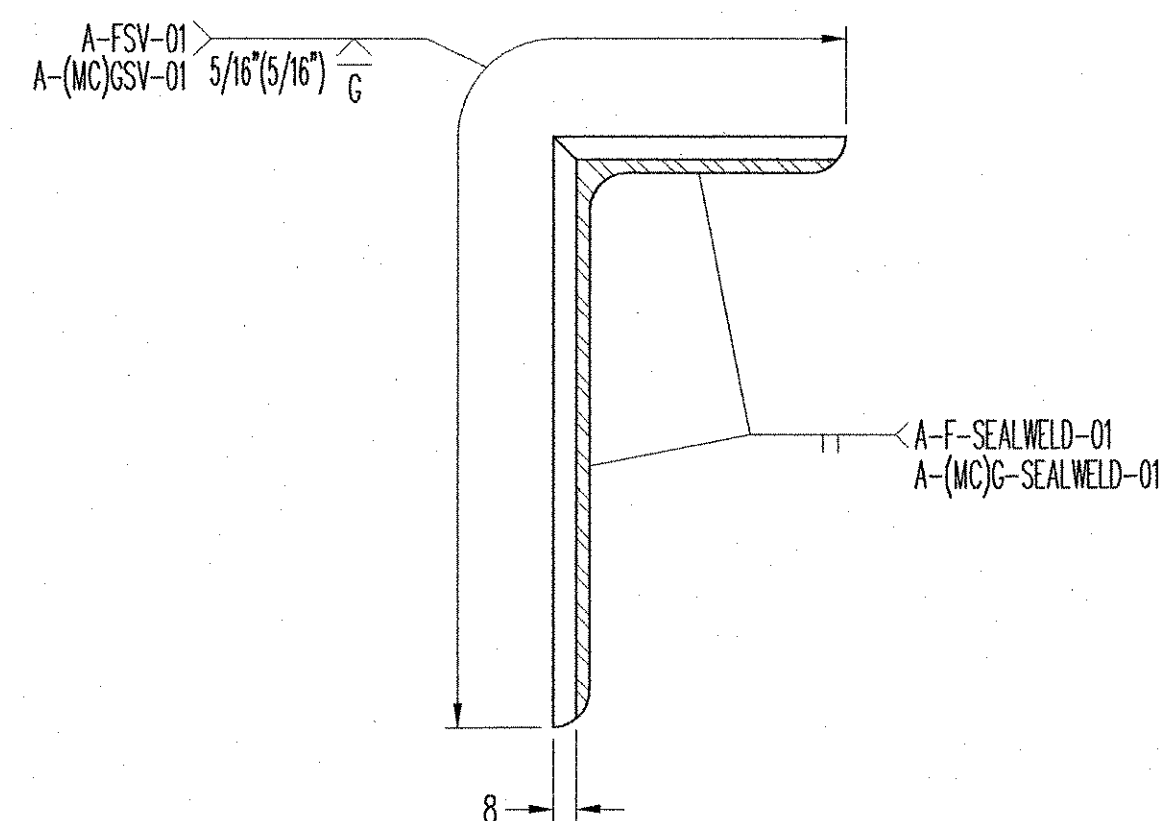
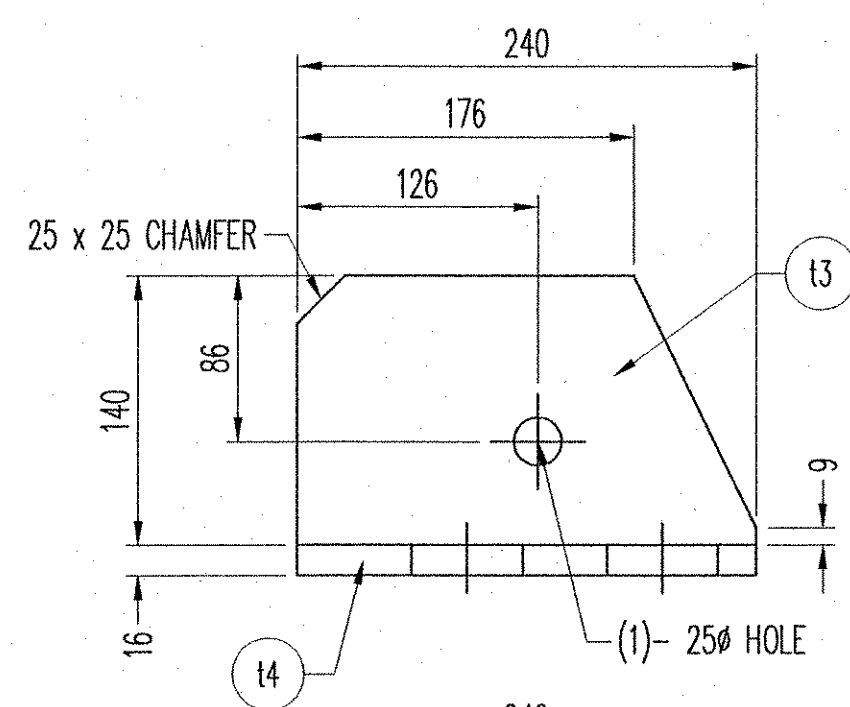
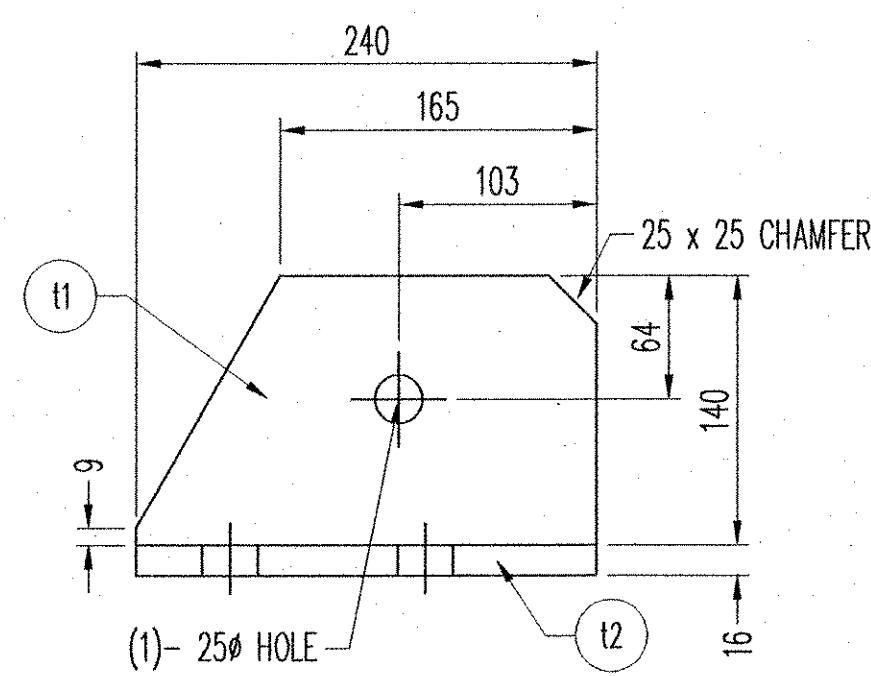
ALL STEEL COMPONENTS SHALL BE AASHTO M270 GRADE 36 GALVANIZED OR METALIZING, ALL CORNERS AND EDGES OF STEEL PLATES, SHAPES, ETC., SHALL BE GROUND TO A 2mm RADIUS. (U.N.O.)

PERFORMED FABRIC MATERIAL SHALL BE CONTINUOUS AND SHALL CONFORM TO SUBSECTION 707.07.

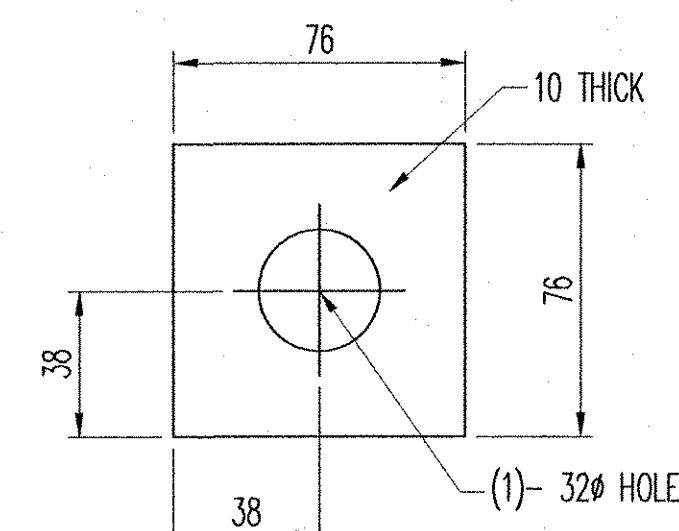
BUTYL RUBBER TAPE SHALL CONFORM TO AASHTO SPECIFICATIONS M-198, TYPE II.

FABRIC TROUGH SHALL BE THOROUGHLY CLEANED AND FLUSHED AFTER PAVING OPERATION.

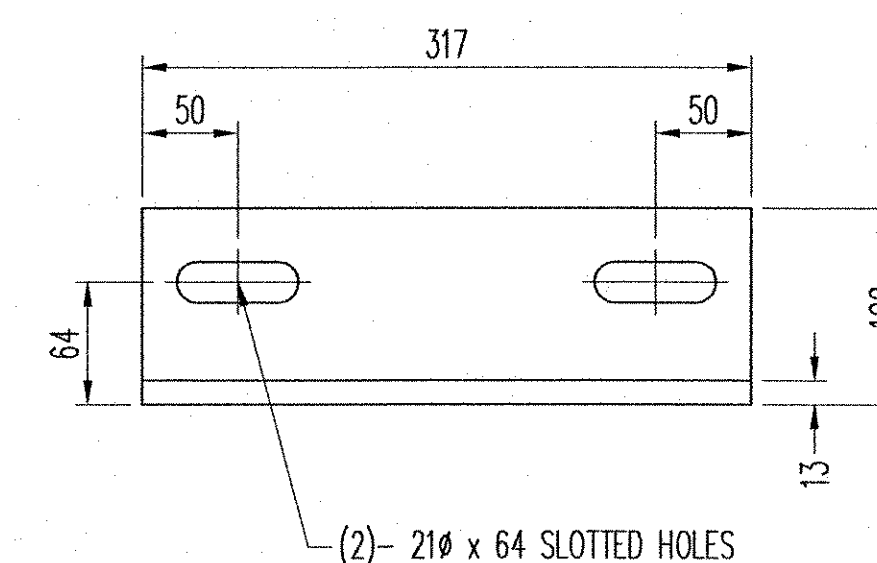
THE EXPANSION JOINT SHALL BE SHOP ASSEMBLED AND SHIPPED AS ONE UNIT.



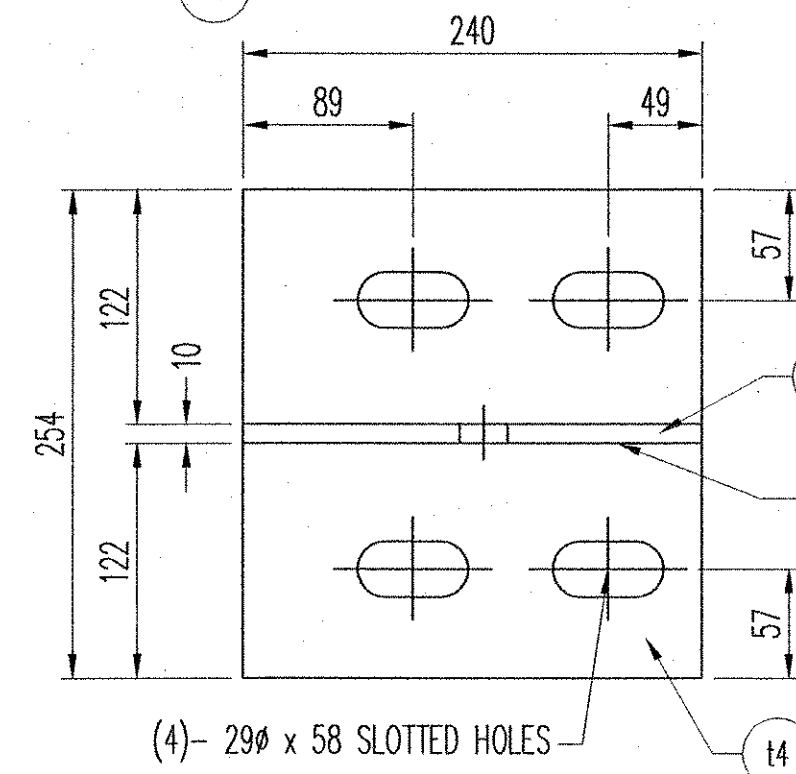
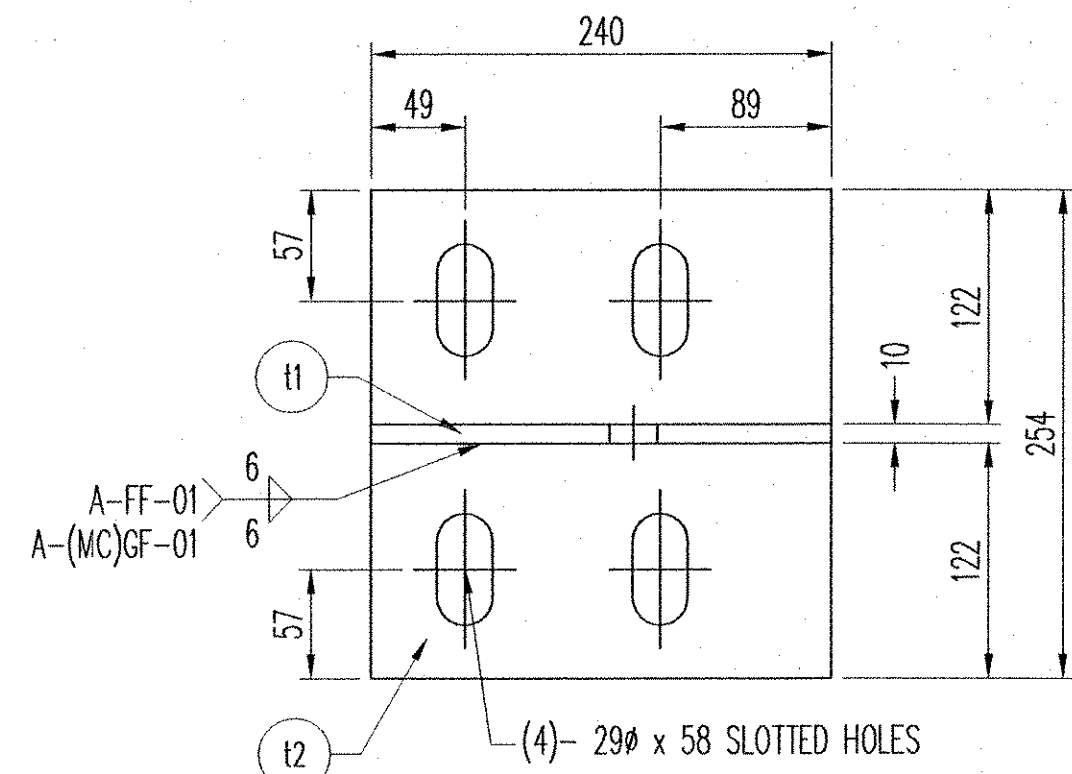
ANGLE SHOP SPLICE DETAIL



WASHER DETAIL (ITEM 3h13)



SHIPPING ANGLE DETAIL (ITEM h3)



BRACKET TEE "3B1" ASSEMBLY

BRACKET TEE "3B2" ASSEMBLY

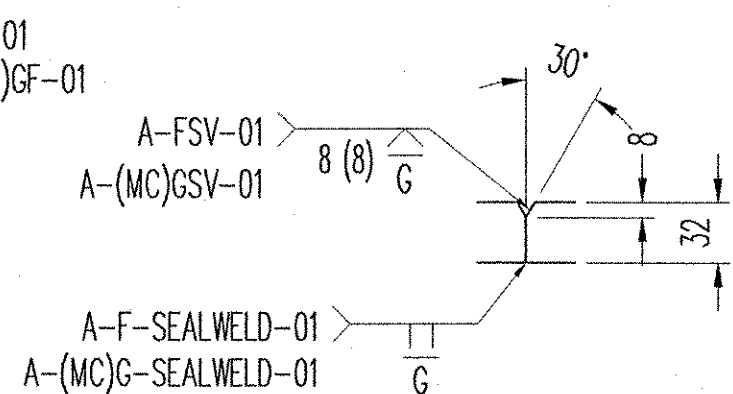
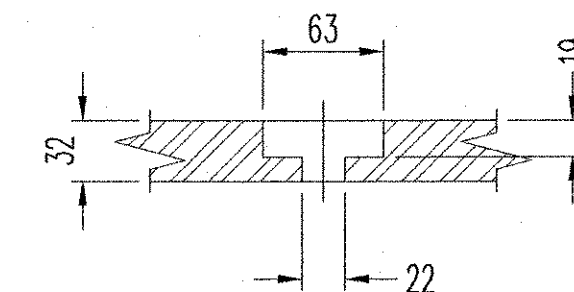


PLATE SHOP SPLICE DETAIL



COUNTER BORE DETAIL

REV.	DESCRIPTION	DATE	DET.	CKD.	ITEM	QUANTITY
1	ADDED EMBEDDED PLATE NOTE	1-31-06	TMB	TLJ		
	LOCATION — U.S. RTE. 5 OVER LULLS BROOK					
	BRIDGE — 60					
	PROJECT — BRS 0113 (22)					
	TOWN — HARTLAND					
	P.O. NO. — 2004					
	DESIGNER — MCFARLAND-JOHNSON, INC.					
	CUSTOMER — MILLER CONSTRUCTION					
DESCRIPTION: EXPANSION JOINT DETAILS WINDSOR COUNTY, VERMONT					SCALE: N.T.S.	3 OF 5
					PROJECT NUMBER: 14032	3

D.S. BROWN
 300 E. CHERRY STREET
 NORTH BALTIMORE, OHIO 45872
 419.257.3561
 FAX: 419.257.0332
 4201 NOREX DRIVE
 CHASKA, MINNESOTA 55318
 952.368.3000
 FAX: 952.448.7000
 DSBROWN.COM

RECEIVED
 FEB 15 2006
 BY: [Signature] DATE: 2/14/06