

METRIC

1. ALL DIMENSIONS ARE IN MILLIMETERS UNLESS OTHERWISE NOTED.
2. ALL WEIGHTS ARE IN KILOGRAMS.

FED. ROAD DIV. NO.	STATE	FED. AID PROJ. NO.
	VT	

BILL OF MATERIAL

SHP.	QTY EA.	MARK	COMM.	DESCRIPTION	LENGTH	SPEC	GRADE	TEST	REMARKS	GRP.	ITER.	SHIP WEIGHT EA.
1	1	G1B		GIRDER								9370.05
1	1	w1	PL	20 x 2235	11 230	M270M	345W	T		3	4	3940.07
1	1	t1	PL	45 x 610	3 360	M270M	345W			4	8	723.93
1	1	l2	PL	32 x 610	7 870	M270M	345W			4	10	1205.79
1	1	b1	PL	65 x 610	3 341	M270M	345W	T		4	4	1039.77
1	1	b2	PL	32 x 610	7 870	M270M	345W	T		4	9	1205.79
1	2	x1a	PL	16 x 2125	350	M270M	345W	T		6	1	93.40
1	2	x1b	PL	32 x 610	1 030	M270M	345W	T		6	2	157.81
1	4	x1c	PL	32 x 255	1 030	M270M	345W	T		6	3	65.97
1	1	x1m	PL	32 x 290	2 235	M270M	345W			7	1	162.80
1	1	x2a	PL	32 x 290	2 235	M270M	345W			7	1	162.80
1	2	x2d	PL	16 x 290	2 235	M270M	345W			7	4	81.40

TOTAL WEIGHT THIS SHEET: 9370.05 kg

- Reviewed
- Rejected
- Furnish as Corrected
- Revise and Resubmit
- Submit Specified Item

This review is only for general conformance with the design criteria and the information provided in the Construction Documents. Corrections or comments made on the shop drawings during this review do not relieve the contractor from compliance with the requirements of the plans and specifications. Review of a specific item shall not indicate review of an assembly of which the item is a component. The Contractor is responsible for dimensions to be confirmed and correlated at the job site. Information that pertains solely to the fabrication process or to the means, methods, techniques, sequences and procedures of construction, coordination of the work, or that of other trades and performing all work in a safe and satisfactory manner.

McFarland-Johnson, Inc.
Date: 4/19/05
By: EJC

VTrans
RECEIVED
CK'D BY: JWC
JUN 03 2005
RESUBMIT: APPROVED
BY: DATE

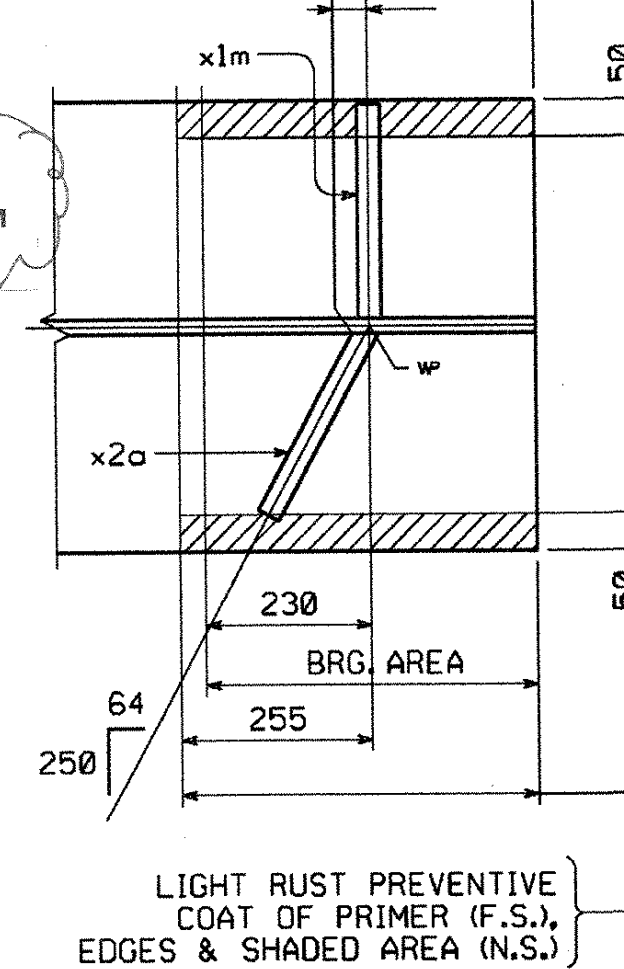
△		
△	CAMBER DESIGN CHANGE	MCK 4-26-05
NO.	REVISION	BY DATE

HIGH STEEL STRUCTURES, INC.		1770 Hempstead Road Lancaster, PA 17605-0008 Phone 717/299-5211 A Division of High Industries, Inc.
GIRDER		G1B
U.S. RTE. 5 (BRIDGE #60) OVER LULLS BROOK		
U.S. RTE. 5 STA. 3+080.77 TO STA. 3+123.110		
TOWN OF HARTLAND		
WINDSOR COUNTY, VERMONT		
STATE OF VERMONT, AGENCY OF TRANSPORTATION		
STATE CONTRACT OR REF. NO.	PROJECT NO. BRS-0113(22)	
CONTRACTOR	MILLER CONSTRUCTION, INC.	
IN CHARGE: GLIDDEN (IH)	MADE BY: KLLW	CHK'D BY: WBW DATE: 4/19/05
CONTRACT NUMBER: VT-05017-1	DRAWING NUMBER: 11 OF 15	

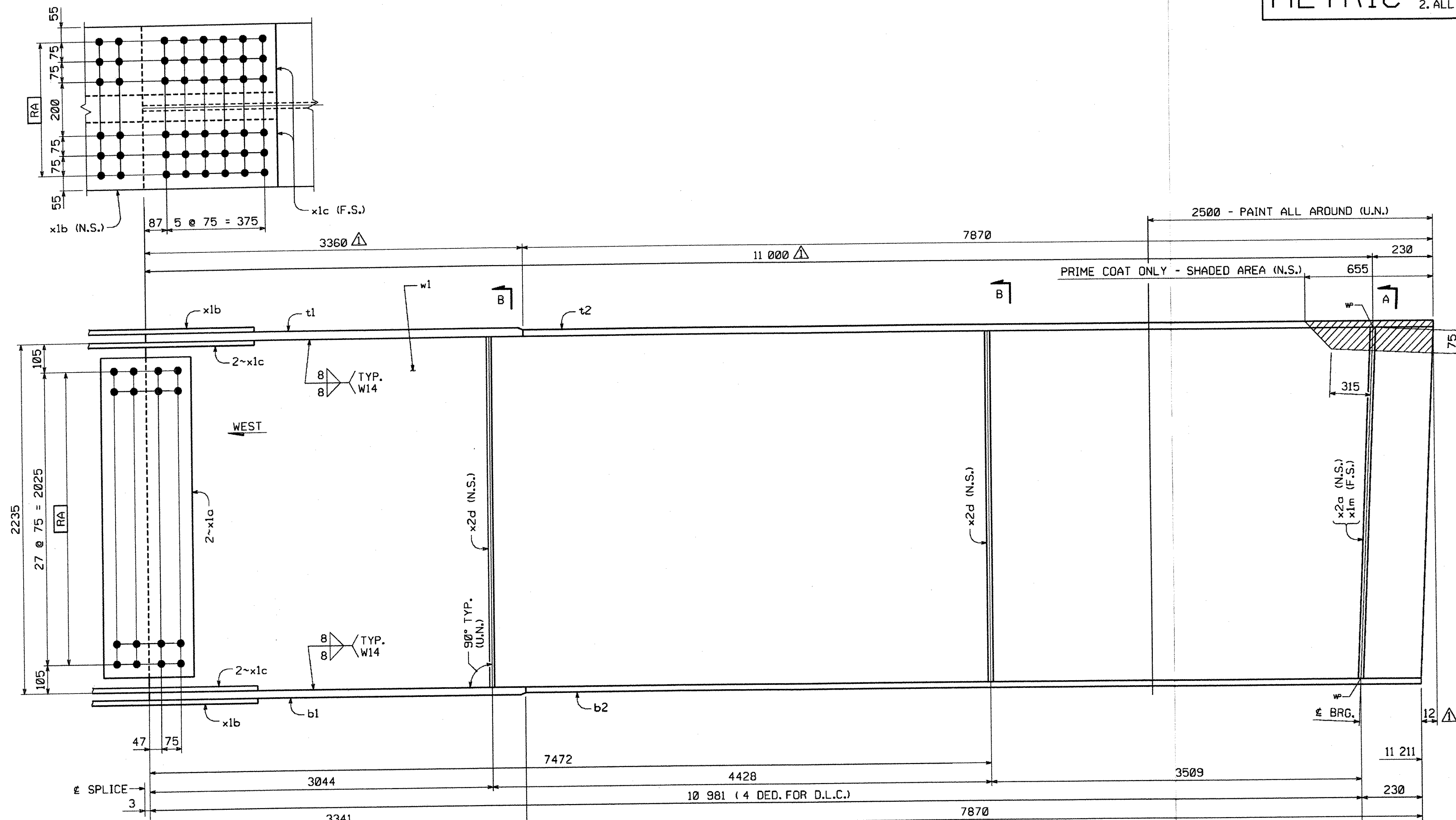
SHOP NOTE

HOLES: 15/16" (U.N.)
BOLTS: NONE
PAINT: SEE DWG. GNI
FOR GENERAL SHOP NOTES, SEE DWG. GNI.
FOR WEB CAMBER DIAGRAM, SEE DWG. WC1.
FOR HORIZ. CURVE DIAGRAM, SEE DWG. HC1.

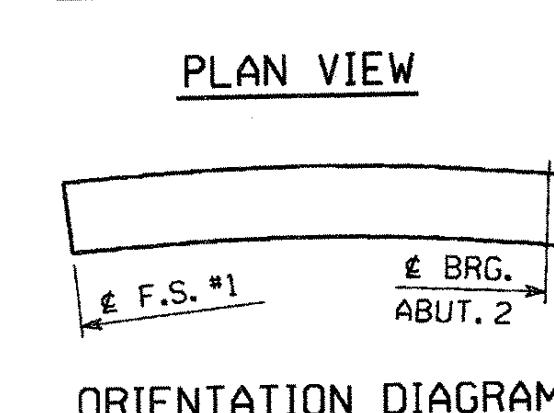
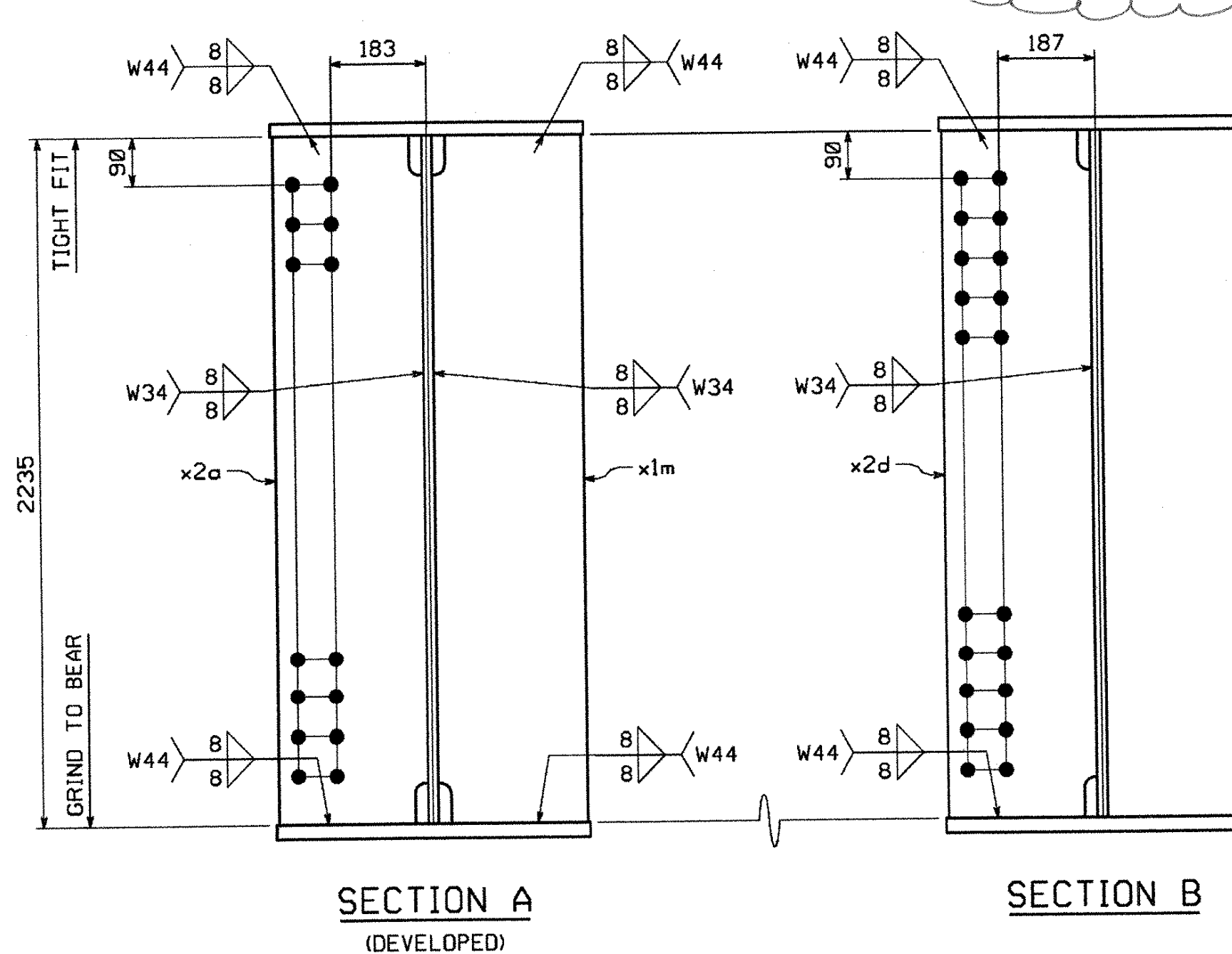
PAINT THE TOP AREA OF THE BOTTOM FLANGE.
PRIME THE SIDES AND BOTTOM OF THE BOTTOM FLANGE IN THE BEARING AREA.



LIGHT RUST PREVENTIVE COAT OF PRIMER (F.S.), EDGES & SHADED AREA (N.S.)



GIRDER MK. ~ G1B



BY: mkr/edf
PLOTTED: 4/28/2005 9:59:48 AM

17955