

METRIC

1. ALL DIMENSIONS ARE IN MILLIMETERS UNLESS OTHERWISE NOTED.
2. ALL WEIGHTS ARE IN KILOGRAMS.

FED. ROAD DIV. NO.	STATE	FED. AID PROJ. NO.
	VT	

BILL OF MATERIAL

SHIP. EA.	QTY	MARK	COMM.	DESCRIPTION	LENGTH	SPEC	GRADE	TEST	REMARKS	GRP.	ITEM	SHIP WEIGHT EA.
1	1	G3A		GIRDER								19582.59
1	1	w1	PL	20 x 2235	14 836	M270M	345W	T		3	3	5205.25
1	1	w2	PL	20 x 2235	18 573	M270M	345W	T		3	2	6516.38
1	1	t1	PL	25 x 460	15 030	M270M	345W			4	21	1356.67
1	1	t2	PL	25 x 460	18 361	M270M	345W			4	20	1657.34
1	1	b1	PL	25 x 460	6 466	M270M	345W	T		4	23	583.65
1	1	b2	PL	32 x 460	10 064	M270M	345W	T		4	18	1162.77
1	1	b3	PL	32 x 460	16 846	M270M	345W	T		4	17	1946.35
1	1	x11	PL	25 x 215	2 236	M270M	345W			7	2	94.33
1	1	x1aa	PL	25 x 215	2 235	M270M	345W			7	2	94.29
1	16	x2f	PL	16 x 215	2 235	M270M	345W			7	5	60.35

TOTAL WEIGHT THIS SHEET: 19582.59 kg

- Reviewed
- Rejected
- Furnish as Corrected
- Revise and Resubmit
- Submit Specified Item

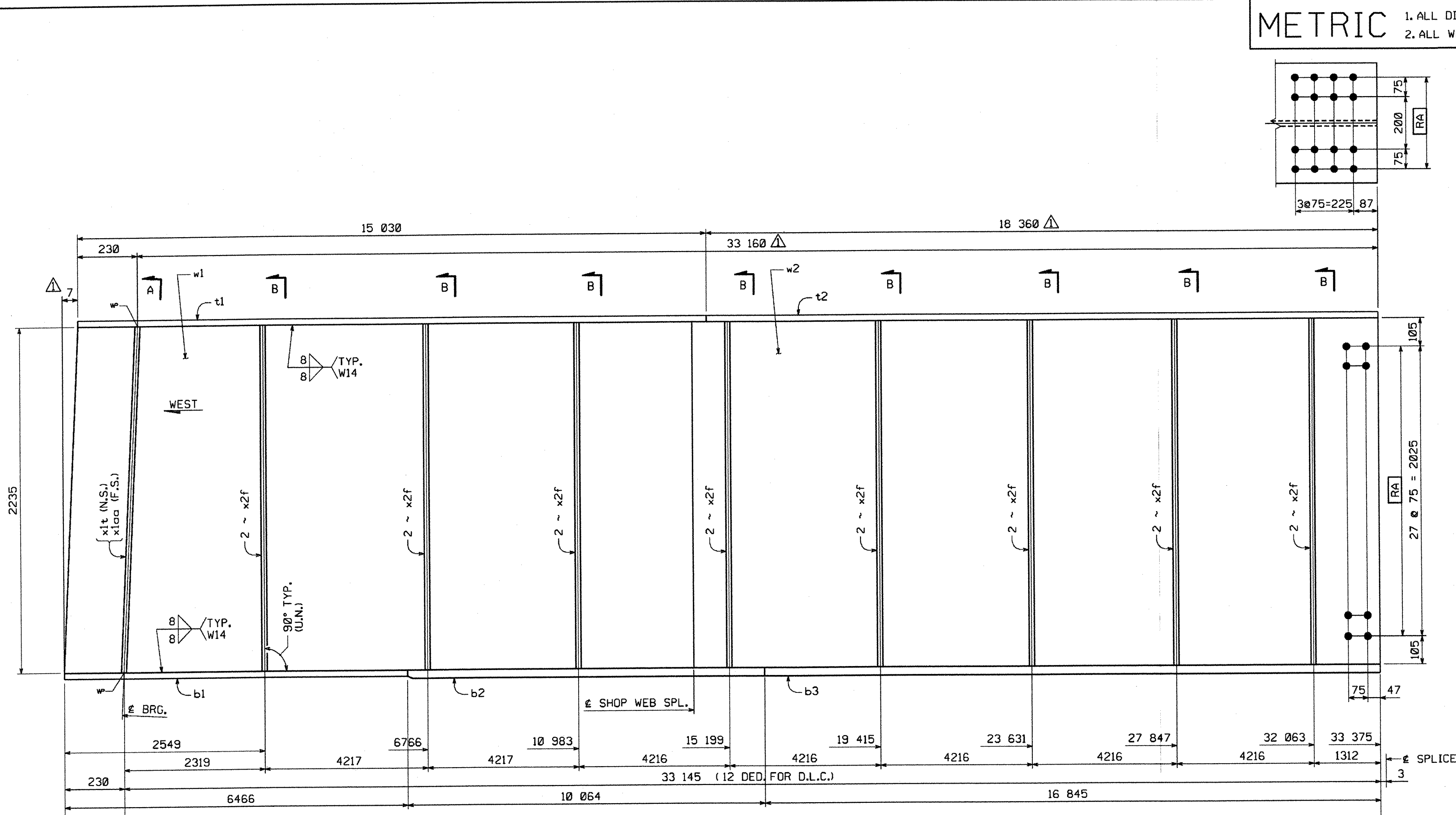
This review is only for general conformance with the design contract and the information given in the Construction Documents. Corrections or comments made on the shop drawings during this review do not relieve the contractor from compliance with the requirements of the plans and specifications. Review of a specification shall not include review of an assembly of which the item is a component. The Contractor is responsible for dimensions to be confirmed and correlated at the project. Information that pertains solely to the fabrication process or to the means, methods, techniques, sequences and procedures of construction; coordination of the work with that of all other trades and performing all work in a safe and satisfactory manner.

McFarland-Johnson, Inc.
Date: 6/18/05
By: [Signature]

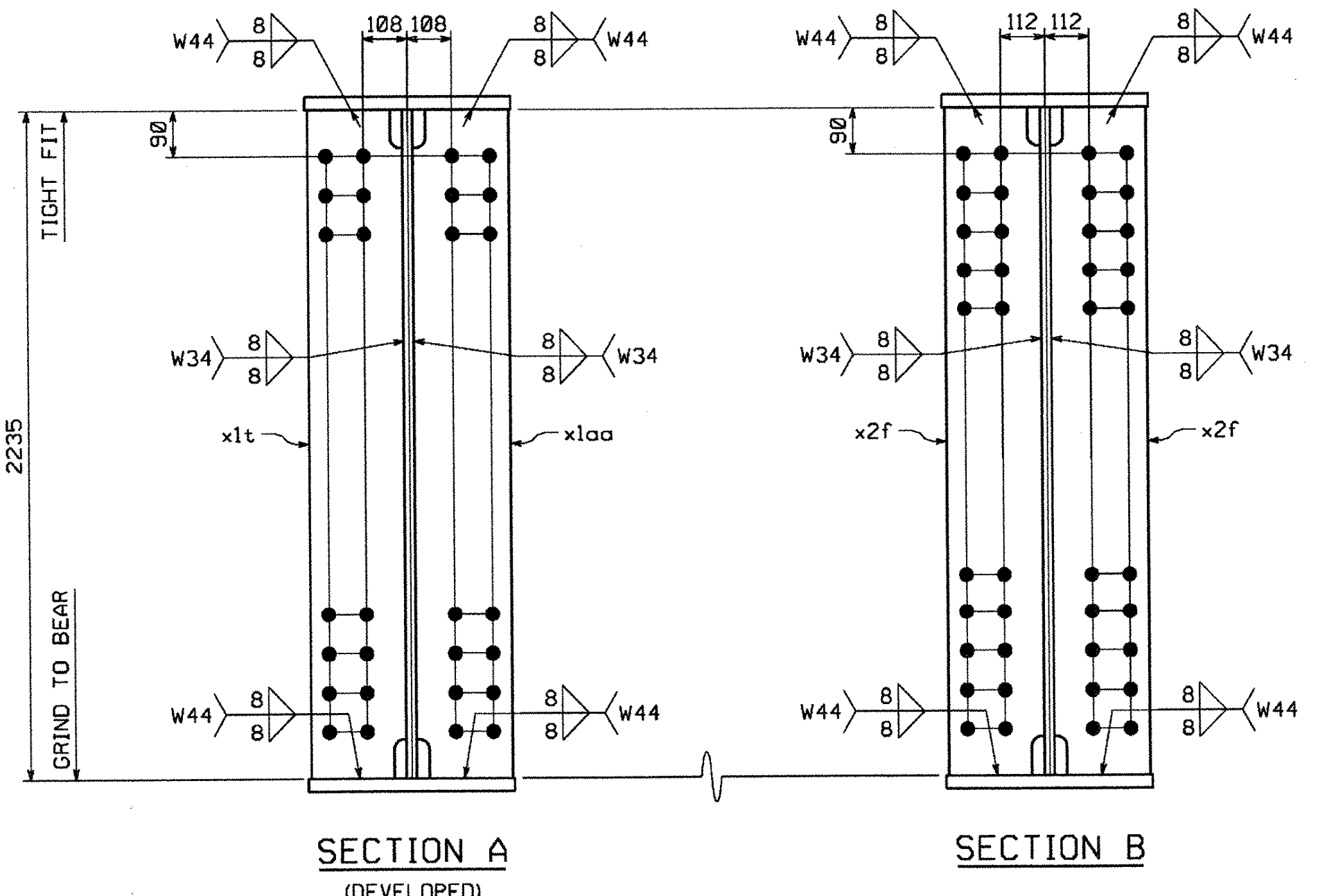
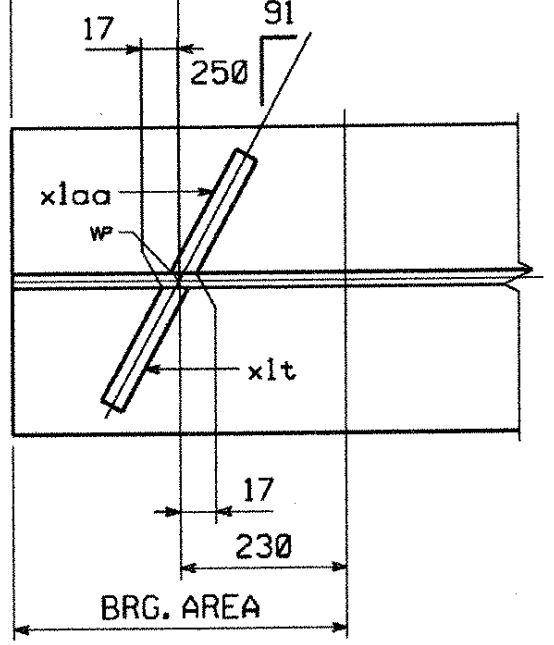
VTrans
RECEIVED
OK'D BY: [Signature] OK'D BY: [Signature]
JUN 03 2005
RESUBMIT: _____ APPROVED: _____
BY: _____ DATE: _____

1	CAMBER DESIGN CHANGE	MGK	4-26-05
NO.	REVISION	BY	DATE

HIGH STEEL STRUCTURES, INC.		1770 Hempstead Road Lancaster, PA 17605-0008 Phone 717/299-5211	
GIRDER		G3A	
U.S. RTE. 5 (BRIDGE #60) OVER LULLS BROOK			
U.S. RTE. 5 STA. 3+080.77 TO STA. 3+123.110			
TOWN OF HARTLAND			
WINDSOR COUNTY, VERMONT			
STATE OF VERMONT, AGENCY OF TRANSPORTATION			
STATE CONTRACT OR REF. NO.	PROJECT NO. BRS-01131221		
CONTRACTOR	MILLER CONSTRUCTION, INC.		
IN CHARGE:	GLIDDEN (IH)	MADE BY:	KLW
		CHK'D BY:	WBW
CONTRACT NUMBER:	VT-05017-1	DATE:	4/18/05
		DRAWING NUMBER:	8 OF 15



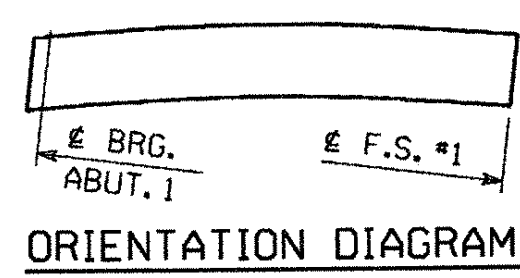
GIRDER MK. ~ G3A



SHOP NOTE

HOLES: 15/16" (U.N.)
BOLTS: NONE
PAINT: NONE
FOR GENERAL SHOP NOTES, SEE DWG. GNI.
FOR WEB CAMBER DIAGRAM, SEE DWG. WCI.
FOR HORIZ. CURVE DIAGRAM, SEE DWG. HCI.

PLAN VIEW



BY: mkreid61
PLOTTED: 4/28/2005 9:39:02 AM

12655