

METRIC

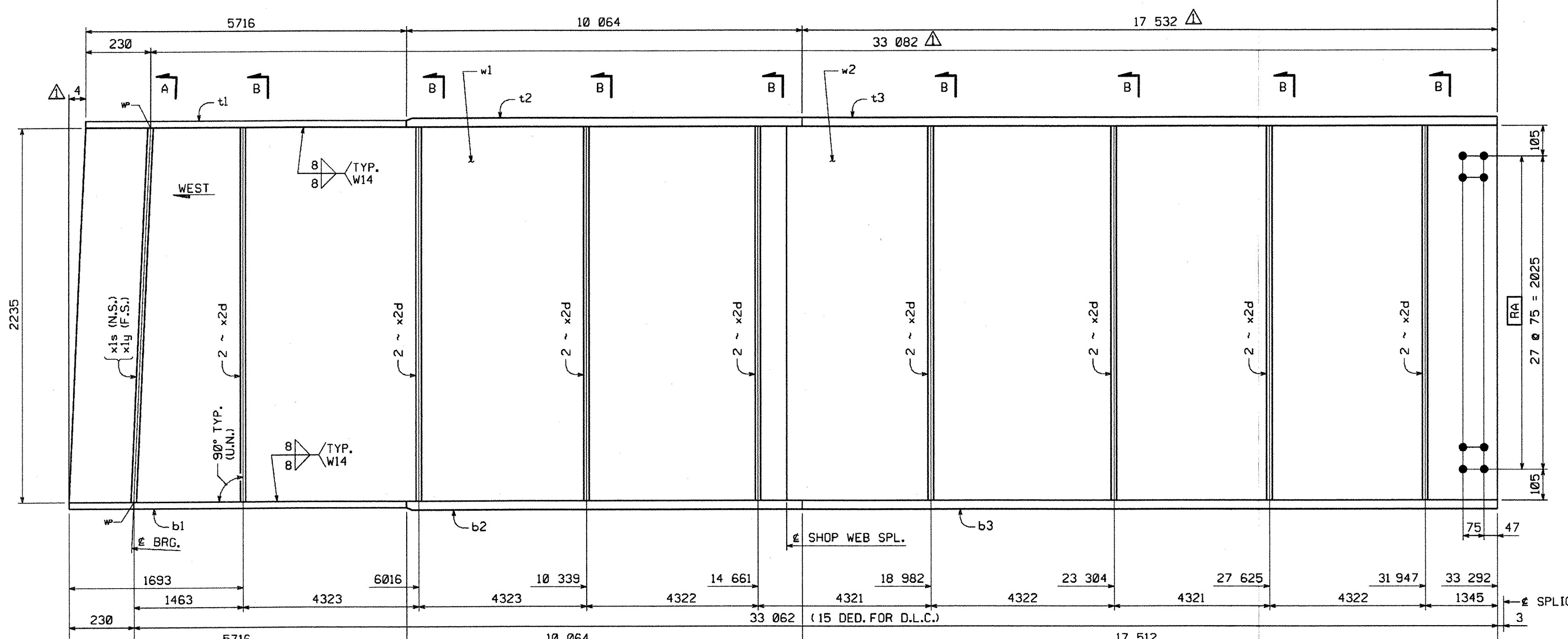
1. ALL DIMENSIONS ARE IN MILLIMETERS UNLESS OTHERWISE NOTED.  
2. ALL WEIGHTS ARE IN KILOGRAMS.

FED. ROAD DIV. NO. STATE VT FED. AID PROJ. NO.

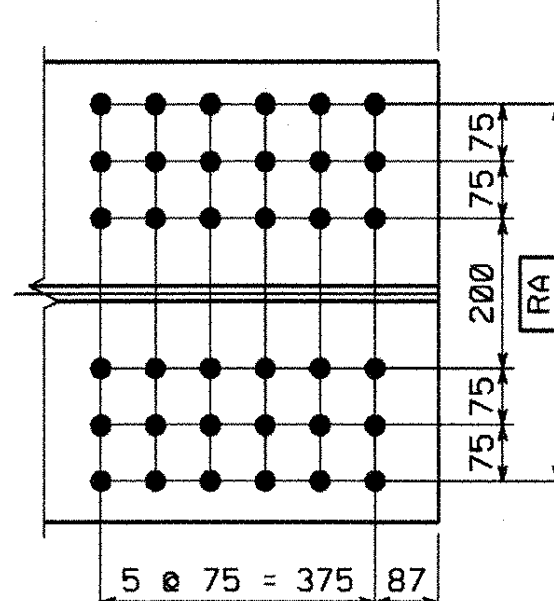
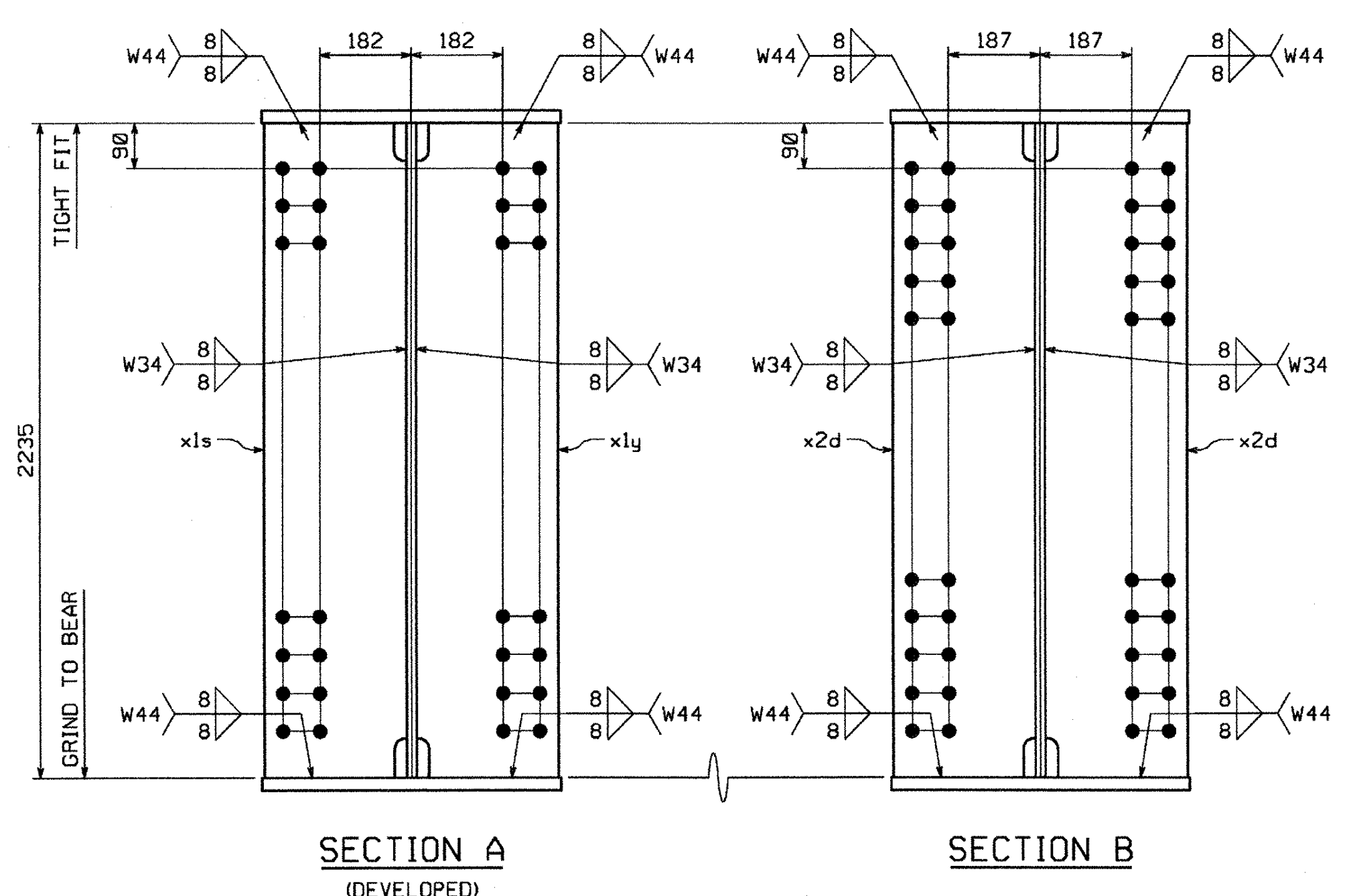
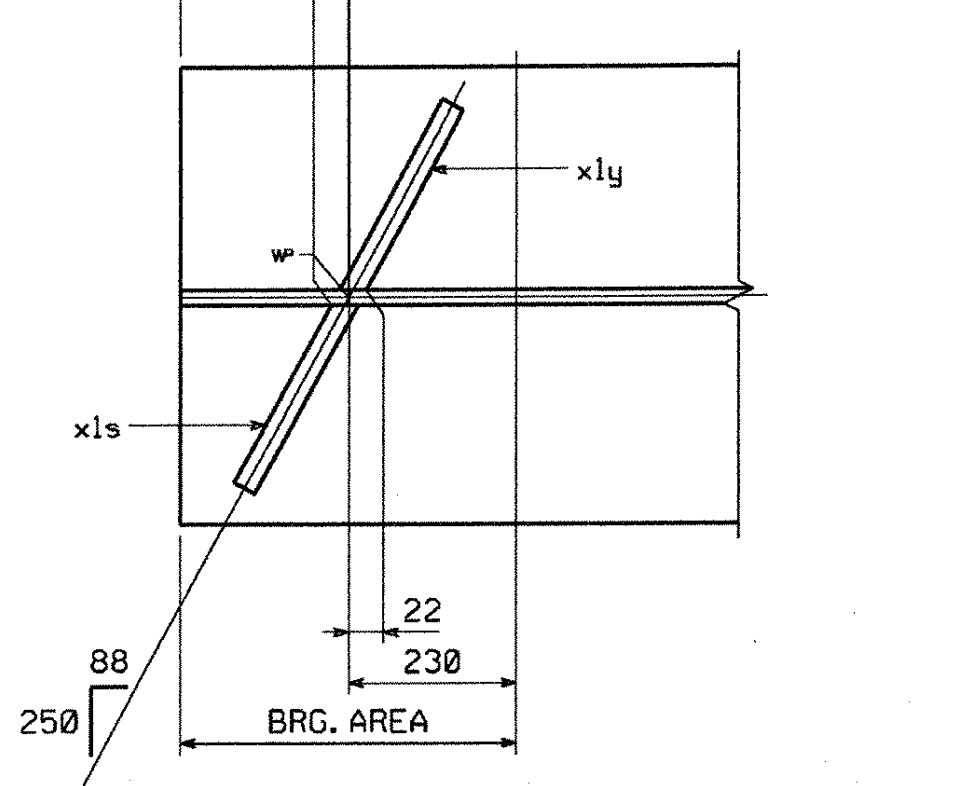
BILL OF MATERIAL

SHIP. EA.	QTY	MARK	COMM.	DESCRIPTION	LENGTH	SPEC	GRADE	TEST	REMARKS	GRP.	ITEM	SHIP WEIGHT EA.
1	1	G2A		GIRDER								29601.80
1	1	w1	PL	20 x 2235	14 836	M270M	345W	T		3	3	5205.25
1	1	w2	PL	20 x 2235	18 494	M270M	345W	T		3	2	6488.67
1	1	t1	PL	32 x 610	5 716	M270M	345W			4	14	875.77
1	1	t2	PL	45 x 610	10 064	M270M	345W			4	7	2168.35
1	1	t3	PL	45 x 610	17 533	M270M	345W			4	6	3777.60
1	1	b1	PL	32 x 610	5 716	M270M	345W	T		4	13	875.77
1	1	b2	PL	65 x 610	10 064	M270M	345W	T		4	3	3132.07
1	1	b3	PL	65 x 610	17 513	M270M	345W	T		4	2	5450.31
1	1	x1s	PL	32 x 290	2 236	M270M	345W			7	1	162.87
1	1	x1y	PL	32 x 290	2 235	M270M	345W			7	1	162.80
1	16	x2d	PL	16 x 290	2 235	M270M	345W			7	4	81.40

TOTAL WEIGHT THIS SHEET: 29601.80 kg



GIRDER MK. ~ G2A



Reviewed  Rejected   
 Furnish as Corrected   
 Revise and Resubmit   
 Submit Specified Item   
 This review is only for general conformance with the design concept and the information given in the Construction Documents. Corrections or comments made on the shop drawings during this review do not relieve the contractor from compliance with the requirements of the plans and specifications. Review of a specific item shall not include review of an assembly of which the item is a component. The Contractor is responsible for dimensions to be confirmed and corrected at the job site. Information that pertains to the fabrication process or to the means, methods, techniques, sequences and procedures of construction coordination of the Work with that of all other trades and performing all work in a safe and satisfactory manner.  
 McFarland-Johnson, Inc.  
 Date: 4/18/05  
 By: EWS

VT TRANS RECEIVED  
 JUN 03 2005  
 RESUBMIT APPROVED  
 BY DATE

SHOP NOTE

HOLES: 15/16" (U.N.)  
 BOLTS: NONE  
 PAINT: NONE  
 FOR GENERAL SHOP NOTES, SEE DWG. GNI.  
 FOR WEB CAMBER DIAGRAM, SEE DWG. WCI.  
 FOR HORIZ. CURVE DIAGRAM, SEE DWG. HCI.

△			
△			
△	CAMBER DESIGN CHANGE	MGK	4-26-05
NO.	REVISION	BY	DATE
 1770 Hempstead Road Lancaster, PA 17609-0008 Phone 717/299-5211 A Division of High Industries, Inc.			
GIRDER G2A			
U.S. RTE. 5 (BRIDGE #60) OVER LULLS BROOK			
U.S. RTE. 5 STA. 3+080.77 TO STA. 3+123.110			
TOWN OF HARTLAND			
WINDSOR COUNTY, VERMONT			
STATE OF VERMONT, AGENCY OF TRANSPORTATION			
STATE CONTRACT PROJECT NO. BRS-0113(22)			
CONTRACTOR MILLER CONSTRUCTION, INC.			
IN CHARGE: GLIDDEN (IH)	MADE BY: KLW	CHK'D BY: WBW	DATE: 4/18/05
CONTRACT NUMBER: VT-05017-1		DRAWING NUMBER: 7 OF 15	

CODE:30

12555