

METRIC

1. ALL DIMENSIONS ARE IN MILLIMETERS UNLESS OTHERWISE NOTED.  
2. ALL WEIGHTS ARE IN KILOGRAMS.

FED. ROAD DIV. NO.	STATE	FED. AID PROJ. NO.
	VT	

**BILL OF MATERIAL**

SHP.	QTY EA.	MARK	COMMODITY	DESCRIPTION	LENGTH	SPEC	GRADE	TEST	REMARKS	GRP.	ITEM	SHIP WEIGHT EA.
1	1	G1A		GIRDER								29049.59
1	1	w1	PL	20 x 2235	14 837	M270M	345W	T		3	3	5205.60
1	1	w2	PL	20 x 2235	18 418	M270M	345W	T		3	2	6462.00
1	1	t1	PL	32 x 610	4 970	M270M	345W			4	16	761.47
1	1	t2	PL	45 x 610	10 060	M270M	345W			4	7	2167.49
1	1	t3	PL	45 x 610	18 209	M270M	345W			4	5	3923.25
1	1	b1	PL	32 x 610	4 970	M270M	345W	T		4	15	761.47
1	1	b2	PL	65 x 610	10 060	M270M	345W	T		4	3	3130.82
1	1	b3	PL	65 x 610	18 184	M270M	345W	T		4	1	5859.13
1	1	x1k	PL	32 x 290	2 235	M270M	345W			7	1	162.80
1	1	x1s	PL	32 x 290	2 235	M270M	345W			7	1	162.87
1	8	x2d	PL	16 x 290	2 235	M270M	345W			7	4	81.40
1	1	x2m	PL	6 x 82	391	M270M	345W			7	7	1.51


TOTAL WEIGHT THIS SHEET: 29049.59 kg

Reviewed  
 Rejected  
 Furnish as Corrected  
 Revise and Resubmit  
 Submit Specified Item

This review is only for general conformance with the design concept and the information given in the Construction Documents. Corrections or comments made on the shop drawings during this review do not relieve the contractor from compliance with the requirements of the plans and specifications. Review of a specific item shall not include review of an assembly of which the item is a component. The Contractor is responsible for dimensions to be confirmed and controlled at the fabricator's responsibility, sequence and procedure of construction, coordination of the work with that of all other trades and performing all work in a safe and satisfactory manner.

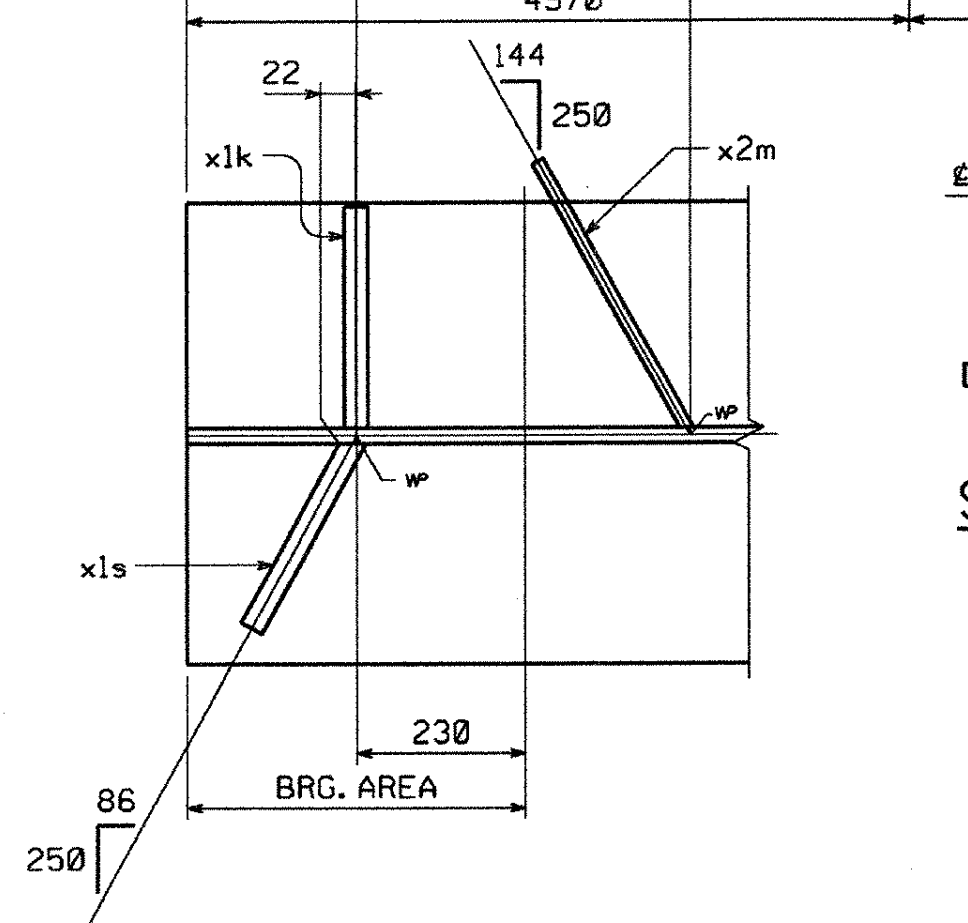
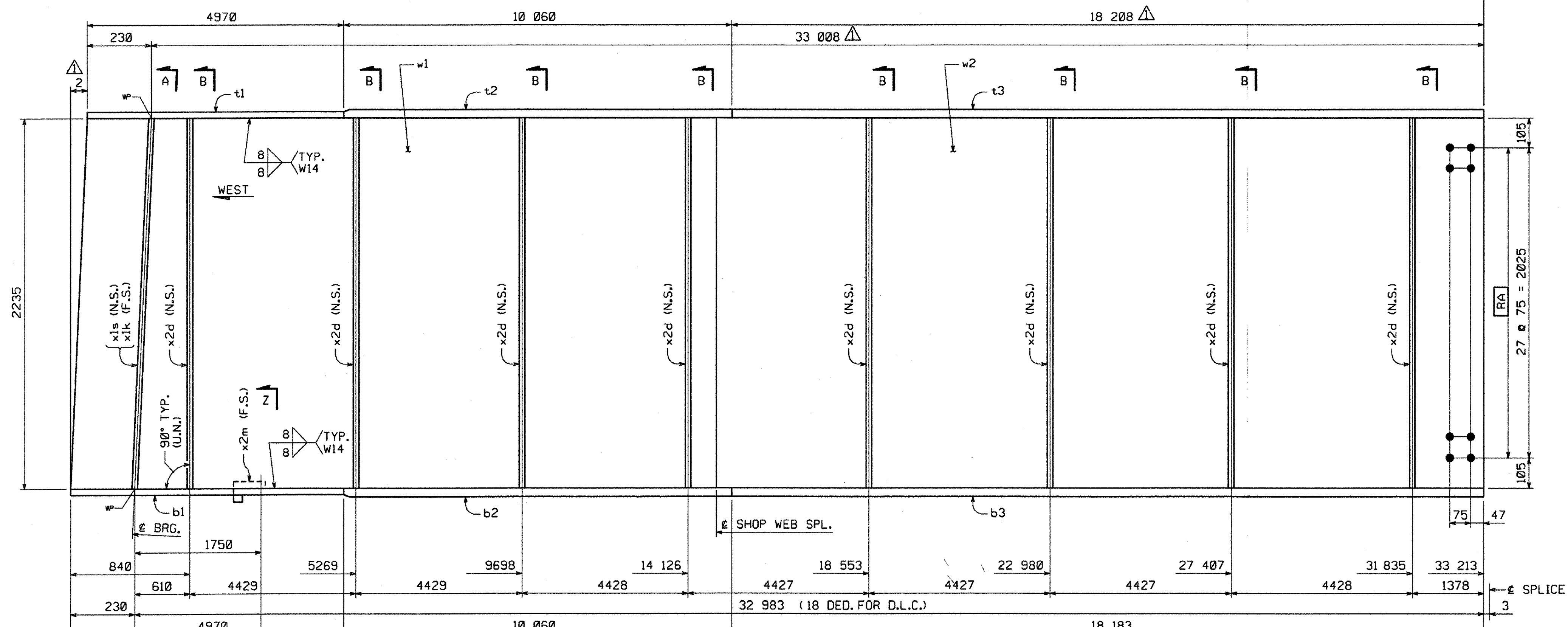
McFarland-Johnson, Inc.  
 Date: 4/18/05  
 By: ERW

VTrans  
 RECEIVED  
 OK'D BY: JWC  
 JUN 03 2005  
 RESUBMIT: \_\_\_\_\_ APPROVED: \_\_\_\_\_  
 BY: \_\_\_\_\_ DATE: \_\_\_\_\_

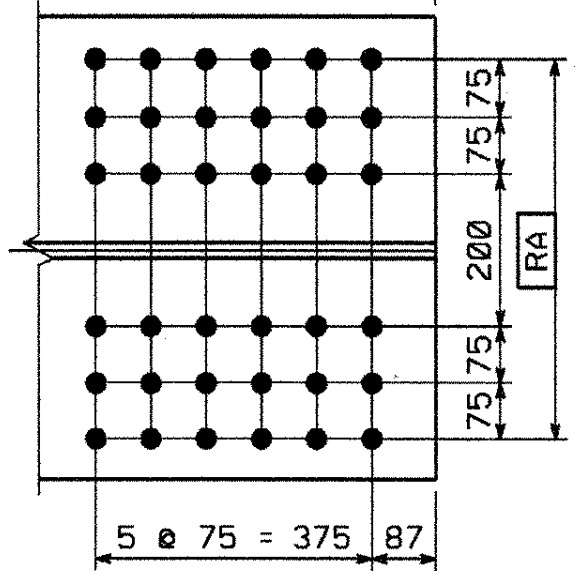
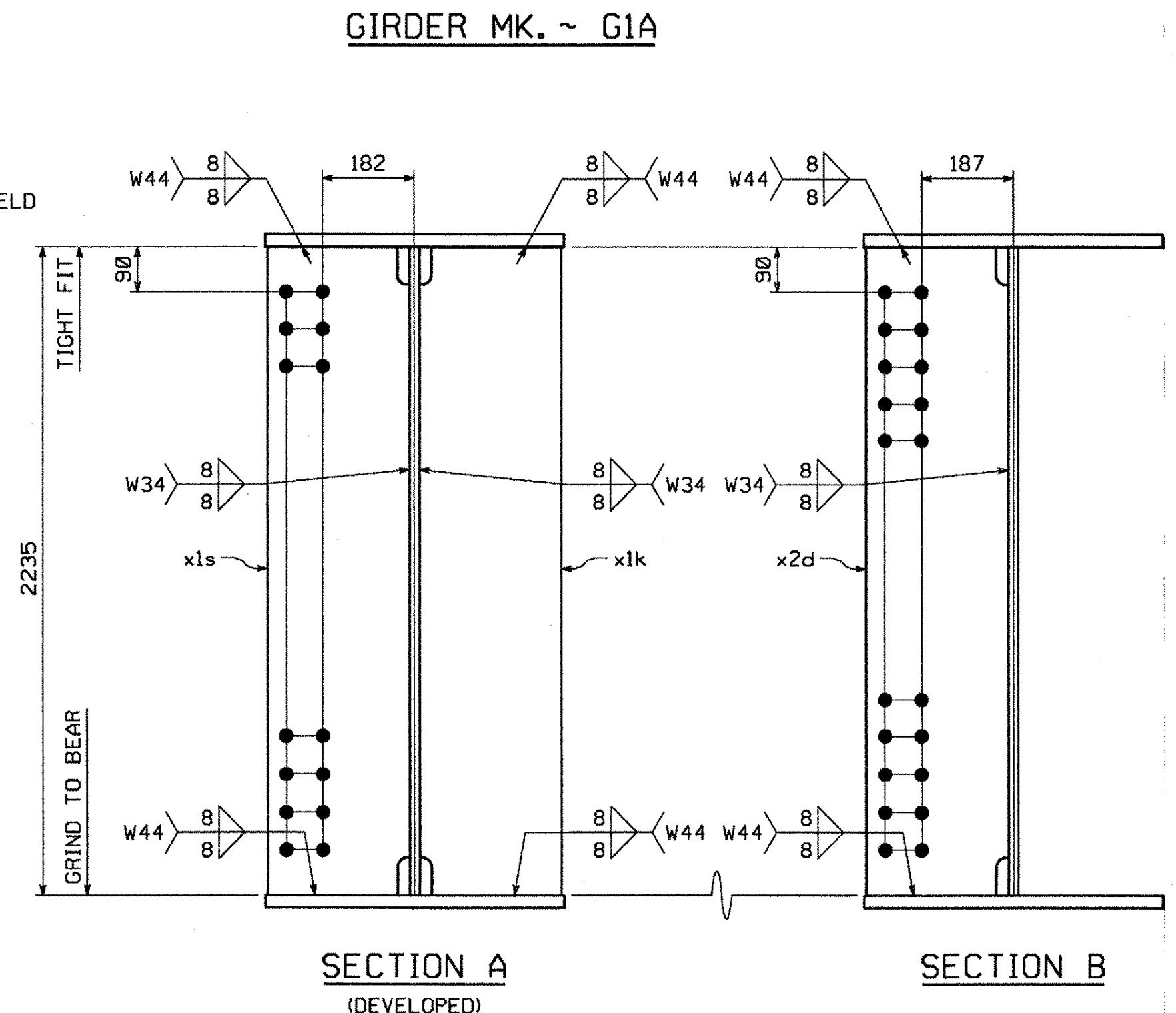
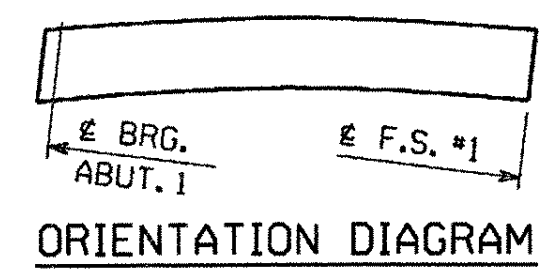
△		
△		
△	CAMBER DESIGN CHANGE	MGK 4-26-05
NO.	REVISION	BY DATE
HIGH STEEL STRUCTURES, INC.  1770 Hempstead Road Lancaster, PA 17605-0008 Phone 717/299-5211 A Division of High Industries, Inc.		
GIRDER G1A		
U.S. RTE. 5 (BRIDGE #60) OVER LULLS BROOK		
U.S. RTE. 5 STA. 3+080.77 TO STA. 3+123.110		
TOWN OF HARTLAND		
WINDSOR COUNTY, VERMONT		
STATE OF VERMONT, AGENCY OF TRANSPORTATION		
STATE CONTRACT OR REF. NO. PROJECT NO. BRS-0113(22)		
CONTRACTOR MILLER CONSTRUCTION, INC.		
IN CHARGE: GLIDDEN (IH)	MADE BY: JWB	CHK'D BY: WBW DATE: 4/18/05
CONTRACT NUMBER: VT-05017-1		DRAWING NUMBER: 6 OF 15

**SHOP NOTE**

**HOLES:** 1/8" (U.N.)  
**BOLTS:** NONE  
**PAINT:** NONE  
 FOR GENERAL SHOP NOTES, SEE DWG. G1.  
 FOR WEB CAMBER DIAGRAM, SEE DWG. WC1.  
 FOR HORIZ. CURVE DIAGRAM, SEE DWG. HC1.



**PLAN VIEW**



BY: mkr/ade

PLOTTED: 4/29/2005 9:38:55 AM

12455