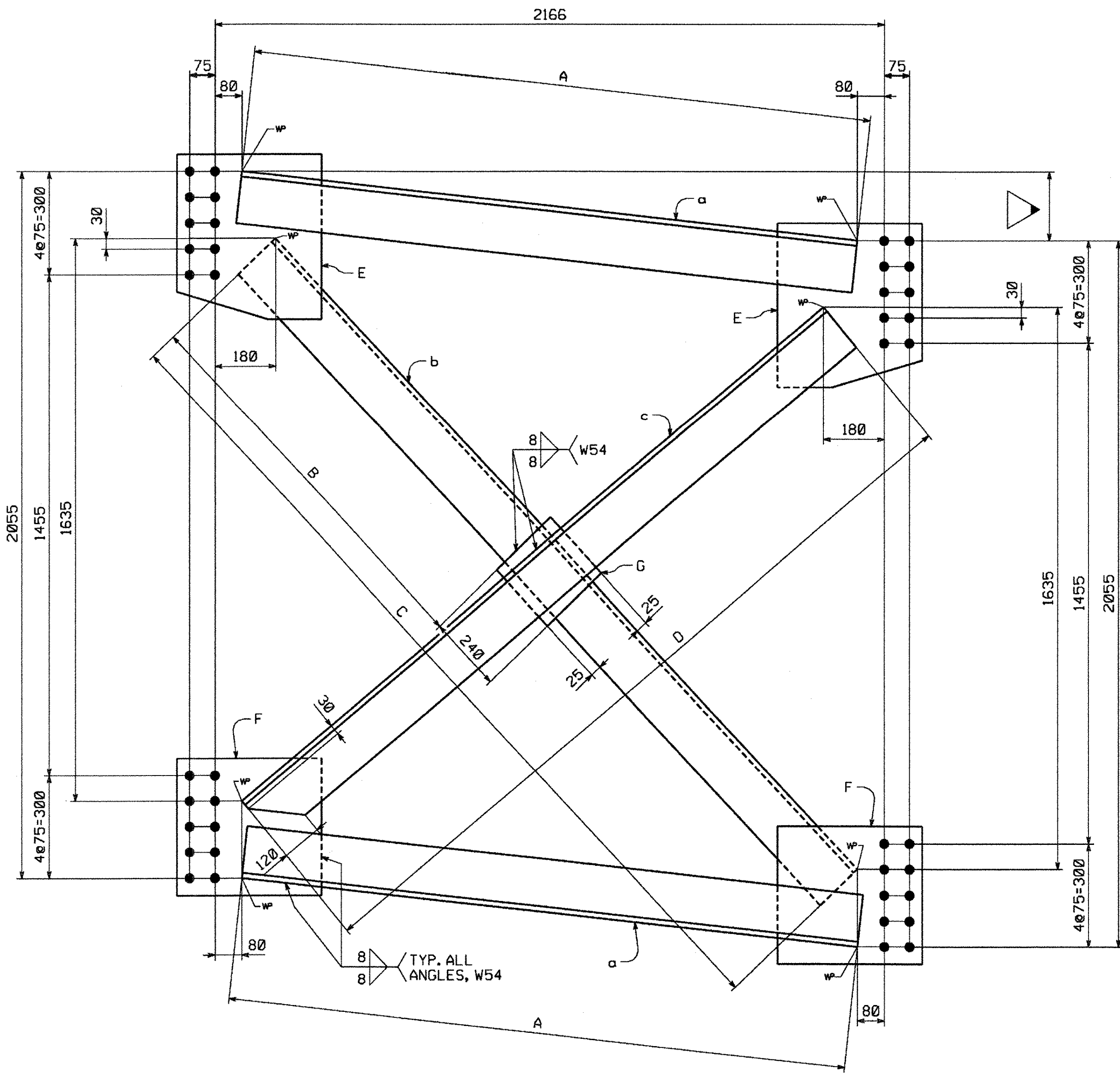


METRIC 1. ALL DIMENSIONS ARE IN MILLIMETERS UNLESS OTHERWISE NOTED.
2. ALL WEIGHTS ARE IN KILOGRAMS.

FED. ROAD DIV. NO. STATE VT FED. AID PROJ. NO.



INTERMEDIATE CROSSFRAMES

MARK	A	B	C	D	E	F	G	REMARKS	
CF15	205	2016	1209	2649	2383	m1h	m1m	m1p	NO PAINT
CF16	200	2016	1207	2646	2386	m1h	m1m	m1p	NO PAINT
CF17	195	2015	1205	2642	2389	m1h	m1m	m1p	NO PAINT
CF18	190	2015	1203	2639	2392	m1k	m1n	m1s	PAINTED
CF19	185	2015	1201	2635	2395	m1h	m1m	m1p	NO PAINT
CF20	180	2014	1199	2632	2398	m1h	m1m	m1p	NO PAINT

BILL OF MATERIAL

QTY EA.	MARK	COMM.	DESCRIPTION	LENGTH	SPEC	GRADE	TEST	REMARKS	GRP.	ITEM	SHIP WEIGHT EA.
ONE	CF21		CROSSFRAME								365.91
2	a	L	152 x 152 x 12.7	2014	M270M	345W	T	(L6 x6x1/2)	11	2	59.82
1	b	L	152 x 152 x 12.7	2632	M270M	345W	T	(L6 x6x1/2)	11	2	78.17
1	c	L	152 x 152 x 12.7	2398	M270M	345W	T	(L6 x6x1/2)	11	2	71.22
2	m1h	PL	16 x 425	460	M270M	345W	T		11	3	24.55
2	m1m	PL	16 x 400	415	M270M	345W	T		11	3	20.85
1	m1p	PL	16 x 202	240	M270M	345W	T	FILL	11	3	6.09

TOTAL WEIGHT THIS SHEET: 3660.31 kg

BILL OF MATERIAL

QTY EA.	MARK	COMM.	DESCRIPTION	LENGTH	SPEC	GRADE	TEST	REMARKS	GRP.	ITEM	SHIP WEIGHT EA.
3	CF15		CROSSFRAMES								366.09
6	a	L	152 x 152 x 12.7	2016	M270M	345W	T	(L6 x6x1/2)	11	2	59.88
3	b	L	152 x 152 x 12.7	2649	M270M	345W	T	(L6 x6x1/2)	11	2	78.88
3	c	L	152 x 152 x 12.7	2383	M270M	345W	T	(L6 x6x1/2)	11	2	70.78
6	m1h	PL	16 x 425	460	M270M	345W	T		11	3	24.55
6	m1m	PL	16 x 400	415	M270M	345W	T		11	3	20.85
3	m1p	PL	16 x 202	240	M270M	345W	T	FILL	11	3	6.09
2	CF16		CROSSFRAMES								366.09
4	a	L	152 x 152 x 12.7	2016	M270M	345W	T	(L6 x6x1/2)	11	2	59.88
2	b	L	152 x 152 x 12.7	2646	M270M	345W	T	(L6 x6x1/2)	11	2	78.59
2	c	L	152 x 152 x 12.7	2386	M270M	345W	T	(L6 x6x1/2)	11	2	70.86
4	m1h	PL	16 x 425	460	M270M	345W	T		11	3	24.55
4	m1m	PL	16 x 400	415	M270M	345W	T		11	3	20.85
2	m1p	PL	16 x 202	240	M270M	345W	T	FILL	11	3	6.09
ONE	CF17		CROSSFRAME								366.00
2	a	L	152 x 152 x 12.7	2015	M270M	345W	T	(L6 x6x1/2)	11	2	59.85
1	b	L	152 x 152 x 12.7	2642	M270M	345W	T	(L6 x6x1/2)	11	2	78.47
1	c	L	152 x 152 x 12.7	2389	M270M	345W	T	(L6 x6x1/2)	11	2	70.95
2	m1h	PL	16 x 425	460	M270M	345W	T		11	3	24.55
2	m1m	PL	16 x 400	415	M270M	345W	T		11	3	20.85
1	m1p	PL	16 x 202	240	M270M	345W	T	FILL	11	3	6.09
ONE	CF18		CROSSFRAME								366.00
2	a	L	152 x 152 x 12.7	2015	M270M	345W	T	(L6 x6x1/2)	11	2	59.85
1	b	L	152 x 152 x 12.7	2642	M270M	345W	T	(L6 x6x1/2)	11	2	78.47
1	c	L	152 x 152 x 12.7	2389	M270M	345W	T	(L6 x6x1/2)	11	2	70.95
2	m1k	PL	16 x 425	460	M270M	345W	T		11	3	24.55
2	m1n	PL	16 x 400	415	M270M	345W	T		11	3	20.85
1	m1s	PL	16 x 202	240	M270M	345W	T	FILL	11	3	6.09
ONE	CF19		CROSSFRAME								366.00
2	a	L	152 x 152 x 12.7	2015	M270M	345W	T	(L6 x6x1/2)	11	2	59.85
1	b	L	152 x 152 x 12.7	2639	M270M	345W	T	(L6 x6x1/2)	11	2	78.38
1	c	L	152 x 152 x 12.7	2392	M270M	345W	T	(L6 x6x1/2)	11	2	71.04
2	m1h	PL	16 x 425	460	M270M	345W	T		11	3	24.55
2	m1m	PL	16 x 400	415	M270M	345W	T		11	3	20.85
1	m1p	PL	16 x 202	240	M270M	345W	T	FILL	11	3	6.09
ONE	CF20		CROSSFRAME								365.97
2	a	L	152 x 152 x 12.7	2015	M270M	345W	T	(L6 x6x1/2)	11	2	59.85
1	b	L	152 x 152 x 12.7	2635	M270M	345W	T	(L6 x6x1/2)	11	2	78.26
1	c	L	152 x 152 x 12.7	2395	M270M	345W	T	(L6 x6x1/2)	11	2	71.13
2	m1h	PL	16 x 425	460	M270M	345W	T		11	3	24.55
2	m1m	PL	16 x 400	415	M270M	345W	T		11	3	20.85
1	m1p	PL	16 x 202	240	M270M	345W	T	FILL	11	3	6.09

- Reviewed
- Rejected
- Furnish as Corrected
- Revise and Resubmit
- Submit Specified Item

This review is only for general conformance with the design concept and the information given in the Contract Documents. Corrections or omissions made on the shop drawings during this review do not relieve the contractor from compliance with the requirements of the plans and specifications. Review of a specific item shall not include review of an assembly of which the item is a component. The Contractor is responsible for dimensions to be confirmed and correlated at the job site. Information that pertains solely to the fabrication process or to the means, methods, techniques, sequences and procedures of construction; coordination of the Work with that of all other trades and performing at work in a safe and satisfactory manner.

McFarland-Johnson, Inc.
Date: 6/17/05
By: EFW

SHOP NOTE

HOLES: 1/16" #
BOLTS: NONE
PAINT: SEE DWG. GNI (U.N.)
FOR GENERAL SHOP NOTES, SEE DWG. GNI.

VTmas RECEIVED
OK'D BY: JWC OK'D BY: _____
JUN 21 2005
RESUBMIT _____ APPROVED _____
BY _____ DATE _____

NO.	REVISION	BY	DATE
CROSSFRAMES CF15 THRU CF21 U.S. RTE. 5 (BRIDGE #60) OVER LULLS BROOK U.S. RTE. 5 STA. 3+080.77 TO STA. 3+123.110 TOWN OF HARTLAND WINDSOR COUNTY, VERMONT STATE OF VERMONT, AGENCY OF TRANSPORTATION			
STATE CONTRACT OR REF. NO. PROJECT NO. BRS-0113(22)			
CONTRACTOR MILLER CONSTRUCTION, INC.			
IN CHARGE: GLIDDEN (IH)	MADE BY: KLLW	CHK'D BY: MGK	DATE: 4/18/05
CONTRACT NUMBER: VT-05017-1	DRAWING NUMBER: 3 OF 15		

12155