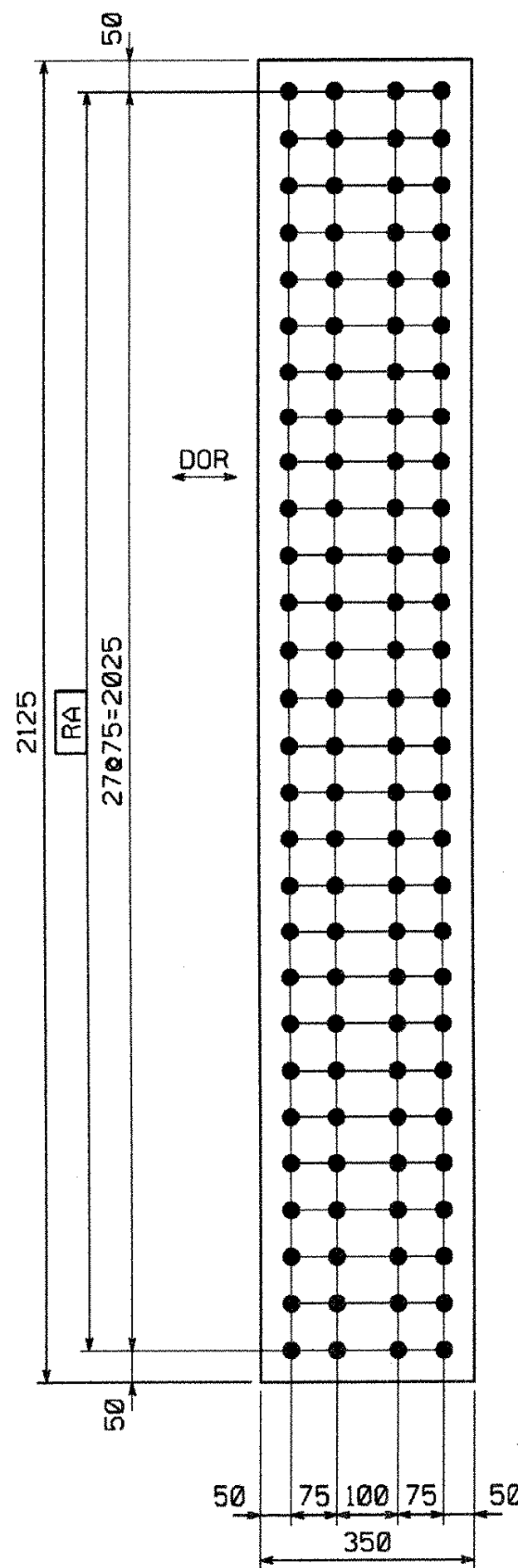


METRIC

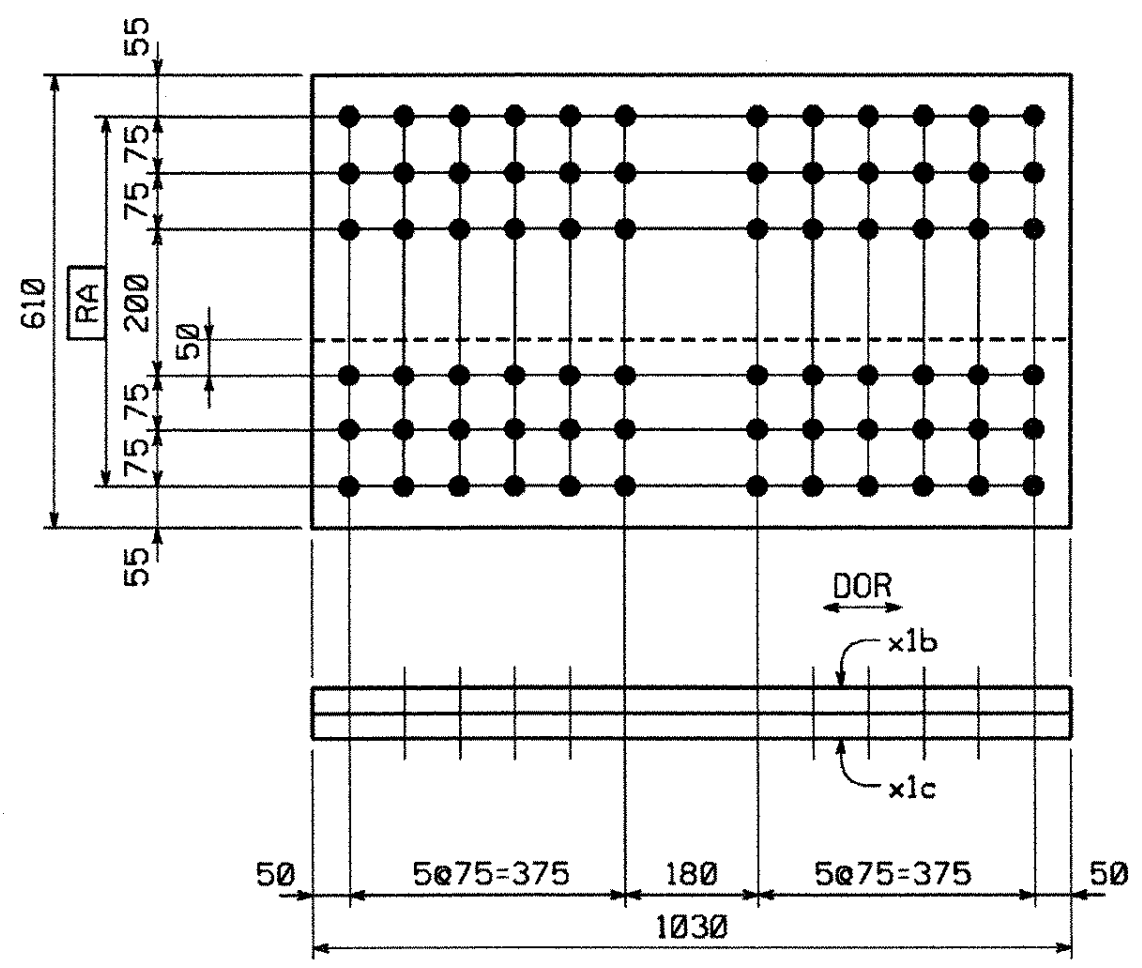
METRIC

1. ALL DIMENSIONS ARE IN MILLIMETERS UNLESS OTHERWISE NOTED.  
2. ALL WEIGHTS ARE IN KILOGRAMS.

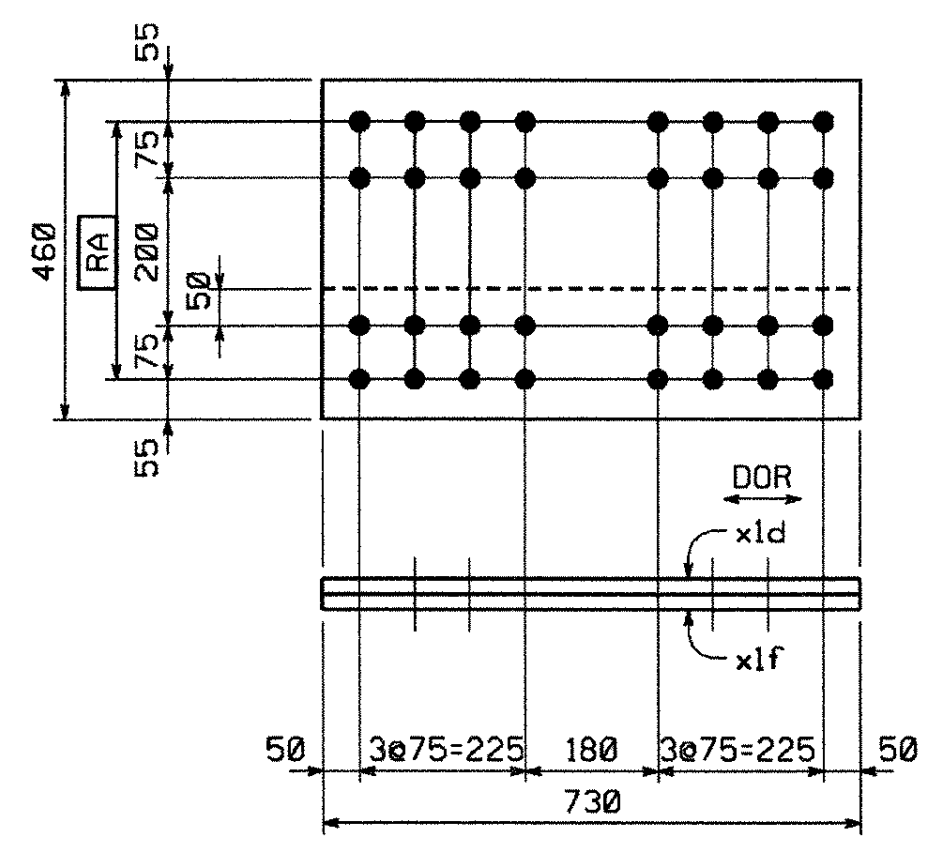
FED. ROAD DIV. NO.	STATE	FED. AID PROJ. NO.
	VT	



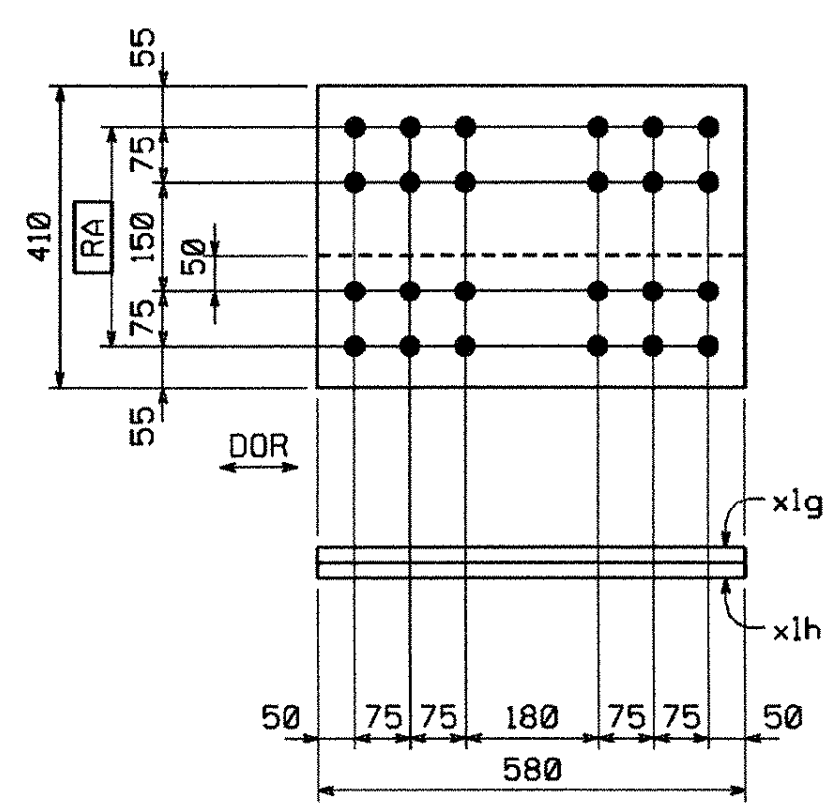
SPLICE P. MK. x1a (CG)



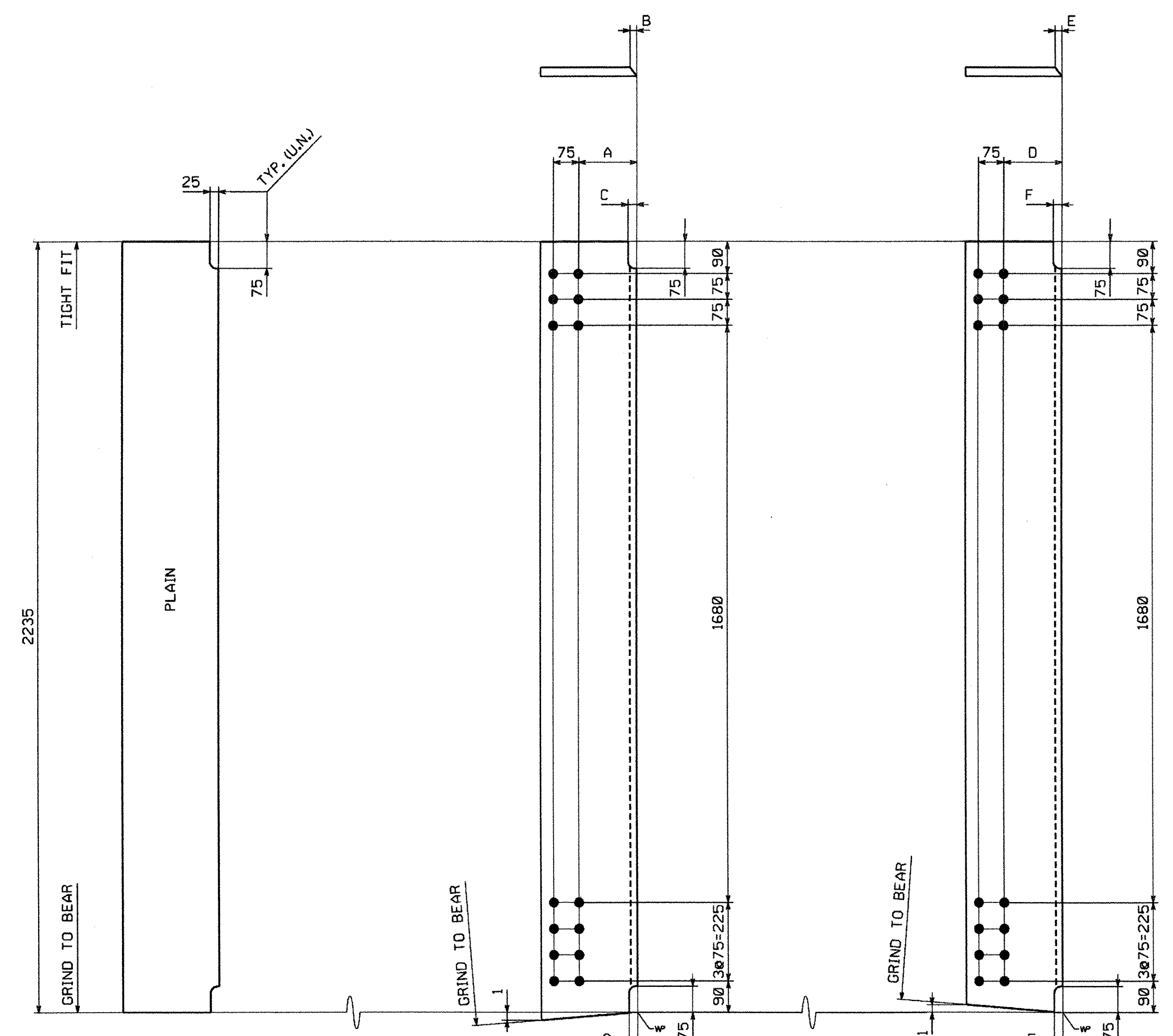
SPLICE P. MK. x1b (CG)  
SPLICE P. MK. x1c (CG)



SPLICE P. MK. x1d (CG)  
SPLICE P. MK. x1f (CG)



SPLICE P. MK. x1g (CG)  
SPLICE P. MK. x1h (CG)



BRG. STIFF.

MARK	REMARKS
x1k	--
x1m	(CG)
x1n	--
x1p	(CG)

BRG. STIFF.

MARK	A	B	C
x1s	177	12	40
x1t	102	9	36
x1w	77	8	36

BRG. STIFF.

MARK	D	E	F
x1y	177	12	40
x1aa	102	9	36
x1ab	77	8	36

SHOP NOTE

HOLES: 1/8" (U.N.)  
 BOLTS: NONE  
 PAINT: NONE  
 DOR INDICATES DIRECTION OF ROLLING  
 FOR GENERAL SHOP NOTES, SEE DWG. GNI.

BILL OF MATERIAL

SHIP.	QTY	MARK	COMMODITY	DESCRIPTION	LENGTH	SPEC	GRADE	TEST	REMARKS	GRP.	ITEM	WEIGHT EA. (KG)
1	10	x1a	PL	16 x 2125	350	M270M	345W	(T)		6	1	93.40
1	4	x1b	PL	32 x 610	1030	M270M	345W	(T)		6	2	157.81
1	8	x1c	PL	32 x 255	1030	M270M	345W	(T)		6	3	65.97
1	2	x1d	PL	20 x 460	730	M270M	345W	(T)		6	4	52.71
1	4	x1f	PL	20 x 180	730	M270M	345W	(T)		6	5	20.63
1	4	x1g	PL	14 x 410	580	M270M	345W	(T)		6	6	26.13
1	8	x1h	PL	14 x 180	580	M270M	345W	(T)		6	7	11.47
1	1	x1k	PL	32 x 290	2235	M270M	345W			7	1	162.80
1	1	x1m	PL	32 x 290	2235	M270M	345W			7	1	162.80
1	1	x1n	PL	22 x 190	2235	M270M	345W			7	3	73.33
1	1	x1p	PL	22 x 190	2235	M270M	345W			7	3	73.33
1	2	x1s	PL	32 x 290	2236	M270M	345W			7	1	162.87
1	1	x1t	PL	25 x 215	2236	M270M	345W			7	2	94.33
1	1	x1w	PL	22 x 190	2236	M270M	345W			7	3	73.36
1	1	x1y	PL	32 x 290	2235	M270M	345W			7	1	162.80
1	1	x1aa	PL	25 x 215	2235	M270M	345W			7	2	94.29
1	2	x1ab	PL	22 x 190	2235	M270M	345W			7	3	73.33

Reviewed   
 Rejected   
 Furnish as Corrected   
 Revise and Resubmit   
 Submit Specified Item

This review is only for general conformance with the design concept and the information given in the Construction Documents. Corrections or comments made on the shop drawings during this review do not relieve the contractor from compliance with the requirements of the plans and specifications. Review of a specific item shall not include review of an assembly of which the item is a component. The Contractor is responsible for dimensions to be confirmed and correlated at the shop. Information that pertains solely to the fabrication process or to the means, methods, techniques, sequences and procedures of construction, coordination of the Work with that of all other trades and performing all work in a safe and satisfactory manner.

McFarland-Johnson, Inc.  
 Date: 6/20/05  
 By: [Signature]

VT RECEIVED  
 OK'D BY: [Signature]  
 JUN 21 2005  
 RESUBMIT APPROVED  
 BY: [Signature]  
 DATE

NOTE: (CG) INDICATES CORNER GRINDING IS REQUIRED.  
 CORNER GRINDING IS NOT REQUIRED FOR MATERIAL ON THIS DRAWING UNLESS NOTED (CG).

NO.	REVISION	BY	DATE

**HIGH STEEL STRUCTURES, INC.**  
 1770 Hempstead Road  
 Lancaster, PA 17605-0008  
 Phone 717/299-5211  
 A Division of High Industries, Inc.

GIRDER JOB STANDARDS  
 U.S. RTE. 5 (BRIDGE #60) OVER LULLS BROOK  
 U.S. RTE. 5 STA. 3+080.77 TO STA. 3+123.110  
 TOWN OF HARTLAND  
 WINDSOR COUNTY, VERMONT  
 STATE OF VERMONT, AGENCY OF TRANSPORTATION

STATE CONTRACT OR REF. NO. PROJECT NO. BRS-0113(22)  
 CONTRACTOR MILLER CONSTRUCTION, INC.  
 IN CHARGE: GLIDDEN (IH) MADE BY: MGK CHK'D BY: EC DATE: 4-13-05  
 CONTRACT NUMBER: VT-05017-1 DRAWING NUMBER: X1 OF X2

BY: mkr-aidel  
 PLOTTED: 4/20/2005 6:44:52 AM

11655