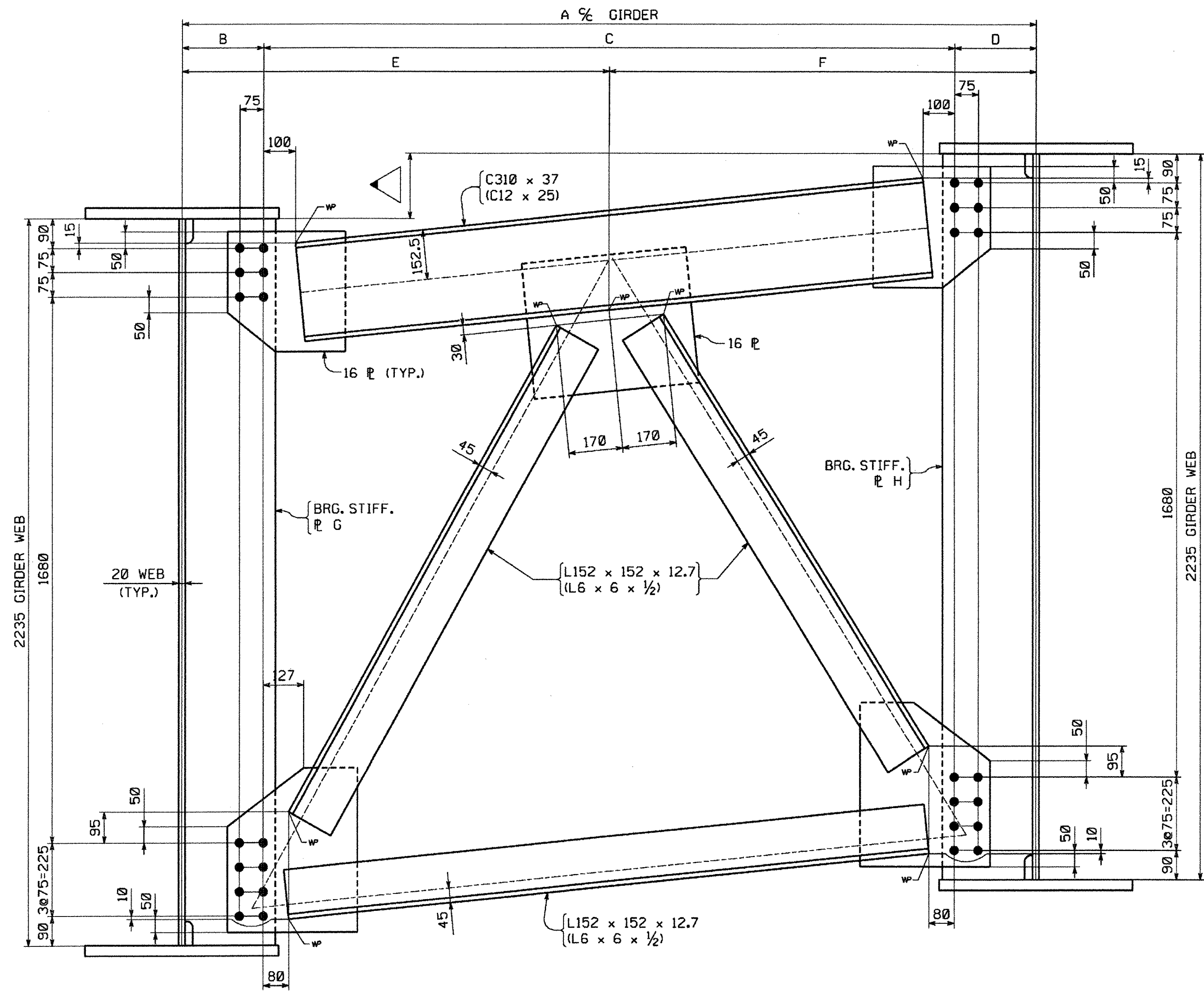


METRIC

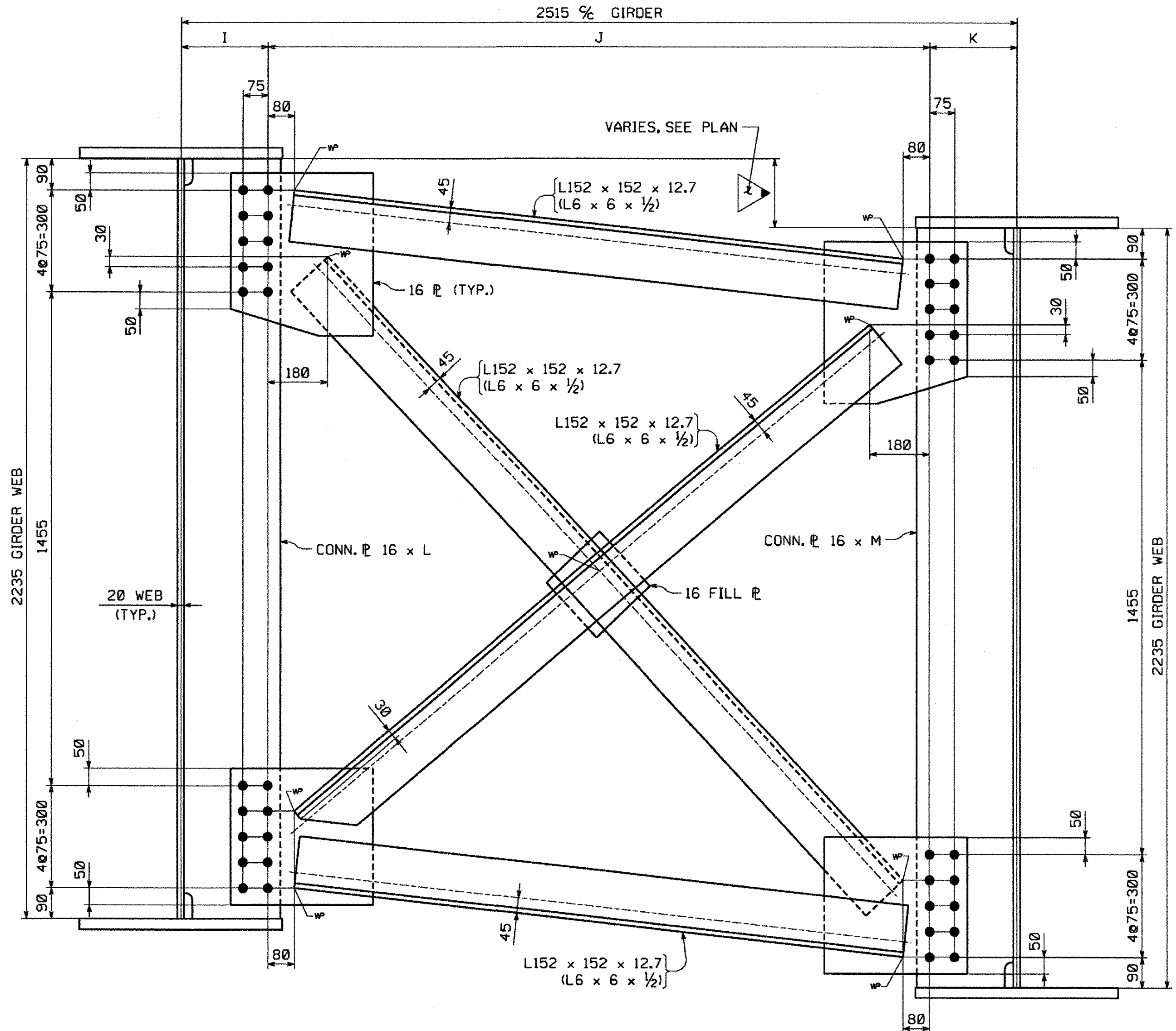
1. ALL DIMENSIONS ARE IN MILLIMETERS UNLESS OTHERWISE NOTED.  
2. ALL WEIGHTS ARE IN KILOGRAMS.

FED. ROAD DIV. NO.	STATE	FED. AID PROJ. NO.
	VT	



END CROSSFRAME LAYOUT  
(LOOKING TOWARD BACKWALL)

PT. TO PT.	A	B	C	D	E	F	G	H
12 TO 11	165	2664	257	2150	257	1332	1332	32 x 290
13 TO 12	170	2672	183	2232	257	1336	1336	25 x 215
14 TO 13	190	2681	158	2340	183	1340	1341	22 x 190
15 TO 14	200	2691	158	2375	158	1345	1346	22 x 190
16 TO 17	(-1170)	2597	258	2081	258	1298	1299	32 x 290
17 TO 18	(-1175)	2601	258	2159	184	1300	1301	32 x 290
18 TO 19	(-1195)	2606	184	2263	159	1303	1303	25 x 215
19 TO 20	(-1205)	2611	159	2293	159	1305	1306	22 x 190



INTERMEDIATE CROSSFRAME LAYOUT  
(LOOKING STATIONS AHEAD)

LOCATION	I	J	K	L	M
G1 - G2	262	1991	262	290	290
G2 - G3	262	2066	187	290	215
G3 - G4	187	2166	162	215	190
G4 - G5	162	2191	162	190	190

OK'D BY: JWC OK'D BY:
   
 JUN 21 2005
   
 RESUBMIT: \_\_\_\_\_ APPROVED: \_\_\_\_\_
   
 BY: \_\_\_\_\_ DATE: \_\_\_\_\_

Reviewed  
 Rejected  
 Furnish as Corrected  
 Revise and Resubmit  
 Submit Specified Item

This review is only for general conformance with the design concept and the information given in the Construction Documents. Corrections or comments made on the shop drawings during this review do not relieve the contractor from compliance with the requirements of the plans and specifications. Review of a specific item shall not include review of all assembly of which the item is a component. The Contractor is responsible for dimensions to be confirmed and corrected at the jobsite. Information that pertains solely to the fabrication process or to the means, methods, techniques, sequences and procedures of construction; coordination of the Work with that of all other trades and performing all work in a safe and satisfactory manner.

McFarland-Johnson, Inc.  
 Date: 6/17/05  
 By: E60

**NOTES:**  
 FOR NOTES, SEE DRAWING WS1.  
 WORK THIS DRAWING WITH DRAWING WS1.  
 ALL HOLES TO BE 1 3/8" FOR 7/8" H.S. BOLTS.

**\*\*NOTE\*\***  
 THE PURPOSE OF THIS DRAWING IS TO COORDINATE GEOMETRIC CONTROL INFORMATION. THIS DRAWING IS SUBMITTED FOR INFORMATION ONLY AND IS NOT INTENDED FOR SHOP FABRICATION. THIS DRAWING IS FOR REFERENCE ONLY, APPROVAL IS NOT REQUIRED.

NO.	REVISION	BY	DATE

HIGH STEEL STRUCTURES, INC.  
 1770 Hempstead Road  
 Lancaster, PA 17605-0008  
 Phone 717/299-5211  
 A Division of High Industries, Inc.

TYPICAL DETAIL - CROSSFRAME LAYOUTS  
 U.S. RTE. 5 (BRIDGE #60) OVER LULLS BROOK  
 U.S. RTE. 5 STA. 3+080.77 TO STA. 3+123.110  
 TOWN OF HARTLAND  
 WINDSOR COUNTY, VERMONT  
 STATE OF VERMONT, AGENCY OF TRANSPORTATION

STATE CONTRACT PROJECT NO. BRS-0113122  
 OR REF. NO. \_\_\_\_\_  
 CONTRACTOR MILLER CONSTRUCTION, INC.  
 IN CHARGE: GLIDDEN (IH) MADE BY: MGK CHK'D BY: RC DATE: 4-12-05  
 CONTRACT NUMBER: VT-05017-1 DRAWING NUMBER: TD1 OF TD1

PLOTTED: 4/28/2005 6:45:42 AM