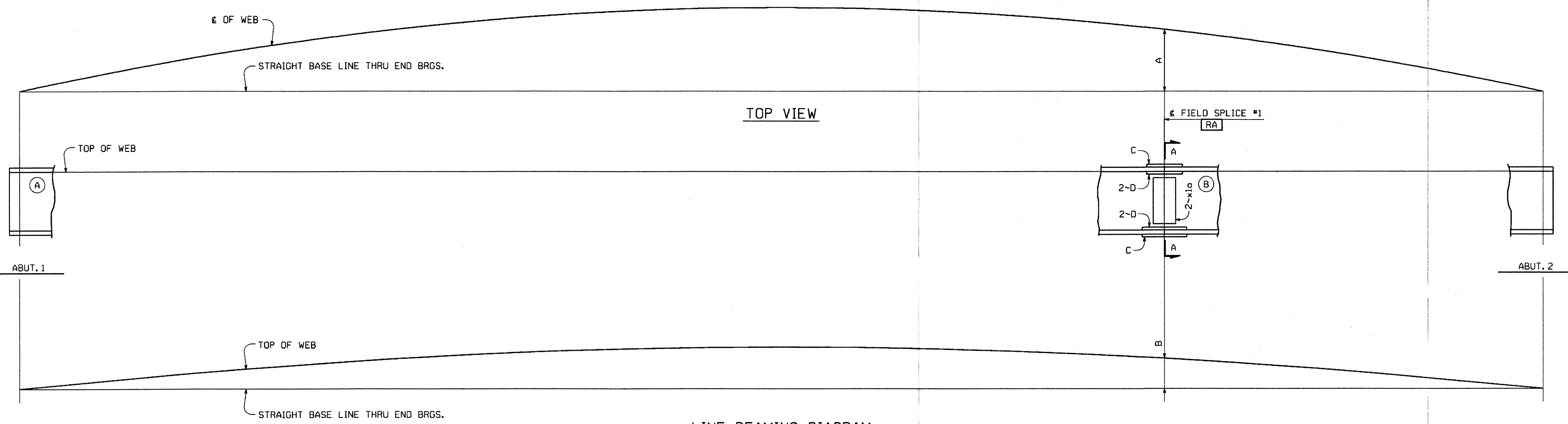


METRIC 1. ALL DIMENSIONS ARE IN MILLIMETERS UNLESS OTHERWISE NOTED.
2. ALL WEIGHTS ARE IN KILOGRAMS.

| | | |
|---------------------|-------|--------------------|
| FED. ROAD DIST. NO. | STATE | FED. AID PROJ. NO. |
| | VT | |



| GDR. LINE | A | B | C | D |
|-----------|------|-----|-----|-----|
| G1 | 1721 | 125 | x1b | x1c |
| G2 | 1622 | 103 | x1b | x1c |
| G3 | 1517 | 83 | x1d | x1f |
| G4 | 1406 | 68 | x1g | x1h |
| G5 | 1288 | 55 | x1g | x1h |

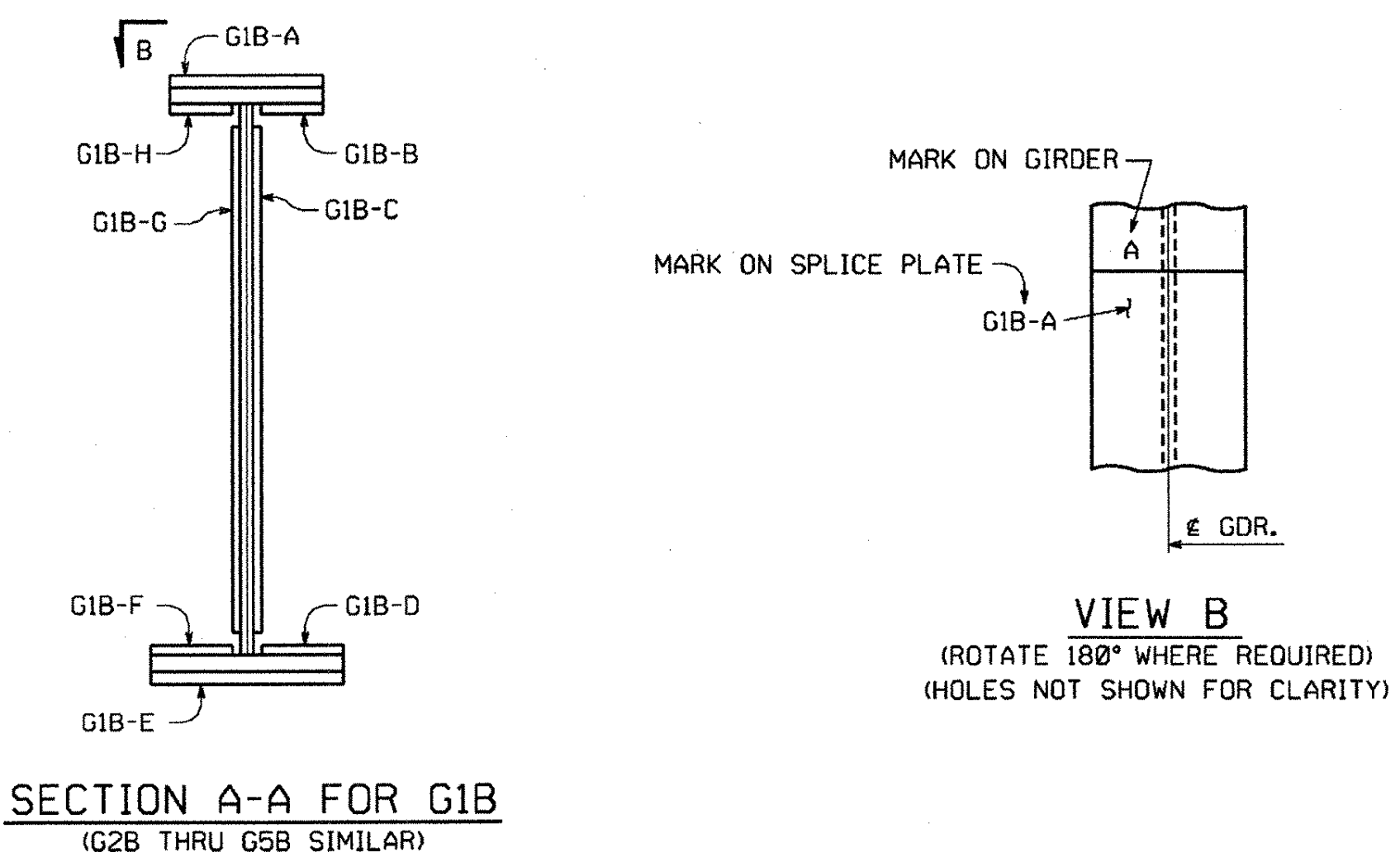
NOTES:
ALL SPLICE PLATES ARE MATCH MARKED AFTER REAMING AS SHOWN IN SECTION A-A. THE MATCH MARKS ON THE SPLICE MATERIAL CONSIST OF THE MARK OF THE GIRDER THEY ARE SHIPPED WITH AND A SUFFIX. THE MARKINGS ARE LOCATED ON THE STEEL AT THE END OF THE SPLICE MATERIAL WHICH IS ON THE GIRDER IT IS SHIPPED WITH. MATCH MARKING MARKS WILL APPEAR ON EDGES OF PLATES. THE CORRESPONDING SUFFIX (A, B, C, ETC.) IS MARKED NEAR THE SPLICE PLATE ON THE GIRDER (SEE VIEW B.)
FOR GIRDER MARKS, SEE THE ERECTION FRAMING PLAN DRAWINGS.
HOLES MARKED [RA] ARE TO BE SUB-PUNCHED/SUB-DRILLED 1/8" UNDER SIZE AND REAMED TO FULL SIZE OR DRILLED FROM SOLID WITH CONNECTING PARTS ASSEMBLED AND MATCH MARKED. HOLES TO BE 1/16".
Ⓐ INDICATES SUFFIX MARK OF SHIPPING PIECE.

Reviewed
 Rejected
 Furnish as Corrected
 Revise and Resubmit
 Submit Specified Item

This review is only for general conformance with the design contract and the information given in the Construction Documents. Corrections or comments made on the shop drawings during this review do not relieve the contractor from compliance with the requirements of the plans and specifications. Review of a specific item shall not include review of an assembly of which the item is a component. The Contractor is responsible for dimensions to be confirmed and controlled at the source. Information that pertains solely to the fabrication process or to the means, methods, techniques, sequence and procedures of construction, coordination of the work with that of all other trades and performing at work in a safe and satisfactory manner.

McFarland-Johnson, Inc.
Date: 6/2/05
By: [Signature]

VTtrans
RECEIVED
OK'D BY: JWC
JUN 03 2005
RESUBMIT: APPROVED
BY: DATE



| | | | |
|--|----------------------------|--------------|---------------|
| △ | | | |
| △ | | | |
| 1 | CAMBER DESIGN CHANGE | MGK | 4-26-05 |
| NO. | REVISION | BY | DATE |
| HIGH STEEL STRUCTURES, INC. 1770 Hempstead Road Lancaster, PA 17605-0008 Phone 717/299-5211 A Division of High Industries, Inc. | | | |
| SHOP ASSEMBLY DIAGRAM U.S. RTE. 5 (BRIDGE #60) OVER LULLS BROOK U.S. RTE. 5 STA. 3+080.77 TO STA. 3+123.110 TOWN OF HARTLAND WINDSOR COUNTY, VERMONT STATE OF VERMONT, AGENCY OF TRANSPORTATION | | | |
| STATE CONTRACT OR REF. NO. PROJECT NO. BRS-0113(22) | | | |
| CONTRACTOR MILLER CONSTRUCTION, INC. | | | |
| IN CHARGE: GLIDDEN (IH) | MADE BY: MGK | CHK'D BY: RC | DATE: 4-13-05 |
| CONTRACT NUMBER: VT-05017-1 | DRAWING NUMBER: SA1 OF SA1 | | |

PLOTTED: 4/28/2005 9:38:59 AM
 BY: mkr-stel

10855