

METRIC 1. ALL DIMENSIONS ARE IN MILLIMETERS UNLESS OTHERWISE NOTED.
2. ALL WEIGHTS ARE IN KILOGRAMS.

FED. ROAD DIV. NO.	STATE	FED. AID PROJ. NO.
	VT	



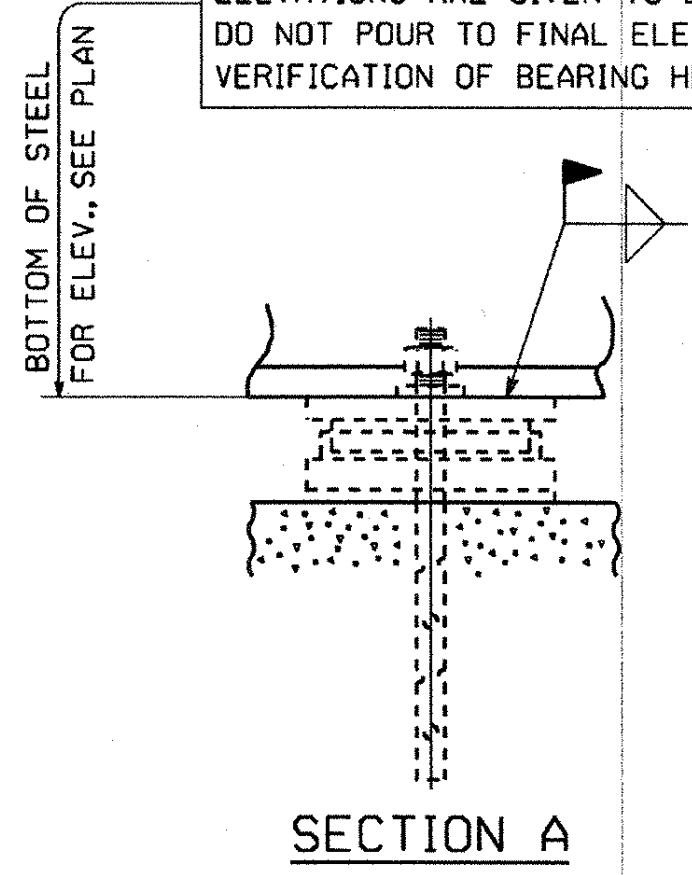
ERECTOR FRAMING PLAN

SHIPPING PIECE MARK	WEIGHT KGS EACH
G1A	29049.59
G2A	29601.80
G3A	19582.59
G4A	17488.97
G5A	17104.96
G1B	9370.05
G2B	8922.99
G3B	5889.77
G4B	4836.31
G5B	4283.07

Reviewed Rejected
 Furnish as Corrected
 Revise and Resubmit
 Submit Specified Item
 This review is only for general conformance with the design concept and the information given in the Construction Documents. Corrections or comments made on the shop drawings during this review do not relieve the contractor from compliance with the requirements of the plans and specifications. Review of a specific item shall not include review of an assembly of which the item is a component. The Contractor is responsible for dimensions to be confirmed and corrected at the jobsite. Information that pertains solely to the fabrication process or to the means, methods, techniques, sequence and procedure of construction, coordination of the Work with that of all other trades and performing all work in a safe and satisfactory manner.
 McFarland-Johnson, Inc.
 Date: 6/10/05
 By: ERW

NOTES:
 NO CREDIT WILL BE ALLOWED FOR WORK PERFORMED BY OTHERS IN REPLACING OR CORRECTING MATERIALS OR WORKMANSHIP COVERED BY THIS DRAWING UNLESS EXPRESSLY AUTHORIZED BY HIGH STEEL STRUCTURES, INC.
 ALL FIELD CONNECTIONS IN UNPAINTED AREAS TO BE MADE WITH 7/8" HIGH STRENGTH (A325, TYPE 3) BOLTS.
 ALL FIELD CONNECTIONS IN PAINTED AREAS TO BE MADE WITH 7/8" HIGH STRENGTH (A325, TYPE 1) BOLTS (MECH. GALV. ASTM B-695, CLASS 50). DIMENSIONS GIVEN THUS: (33 240) ARE THE SHIPPING LENGTHS OUT TO OUT OF FASCIA GIRDERS.
 HIGH STEEL STRUCTURES, INC. DOES NOT SUPPLY SHEAR STUDS, EXPANSION DAM MATERIAL, SCUPPERS OR ANY OTHER BRIDGE DRAINAGE MATERIAL, BEARING ASSEMBLIES INCLUDING PADS AND ANCHOR BOLTS.
 SEE DRAWING SAI FOR MATCH MARKING SYSTEM.
 WORK THIS DRAWING WITH DRAWING E2.
NOTICE: WEIGHTS OF MEMBERS LISTED ON THESE DRAWINGS ARE ESTIMATED WEIGHTS AND ACTUAL WEIGHTS WILL VARY. HIGH STEEL STRUCTURES, INC. WILL NOT BE RESPONSIBLE FOR ANY ERECTION PROCEDURES, SHIPPING PROCEDURES, ETC. DEVELOPED USING ESTIMATED WEIGHTS AS SHOWN.
ERECTOR NOTE: ELEVATIONS, CAMBER CHECKS AND HORIZONTAL ALIGNMENT OF FIELD SPLICES MUST BE COMPLETED PRIOR TO FINAL BOLTING. HIGH STEEL STRUCTURES IS TO BE NOTIFIED AND CONSULTED, PRIOR TO FINAL BOLTING, IF SPLICE LOCATIONS ARE NOT WITHIN ACCEPTABLE TOLERANCE. BOTH VERTICAL & HORIZONTAL CORRECTION OF ANY UNACCEPTABLE SPLICES AFTER FINAL BOLTING WILL BE AT NO COST TO HIGH STEEL STRUCTURES.
NOTICE TO ERECTOR & CONTRACTOR: THIS STRUCTURAL STEEL IS BEING DELIVERED WITH THE FINAL FINISH COAT APPLIED. YOUR SPECIAL ATTENTION REQUIRES EXTREME CARE AND APPROPRIATE EQUIPMENT FOR HANDLING DURING ERECTION AND SUBSEQUENT FIELD OPERATIONS. HIGH STEEL STRUCTURES, INC. WILL NOT BE RESPONSIBLE FOR ANY TOUCH-UP REQUIRED DUE TO YOUR FAILURE TO PROPERLY PROTECT FINISH PAINT.
 ANCHOR BOLTS MUST BE SET BEFORE CROSSFRAMES AT BEARINGS ARE ERECTED. ALL FIELD BOLTS THRU BOTTOM FLANGE ARE TO HAVE HEADS UP.
 ALL FIELD BOLTS THRU WEB OF FASCIA GIRDERS ARE TO HAVE HEADS ON OUTSIDE OF WEB.
 THE SHIPPING MARKS SHOWN CONSIST OF THE PREFIX INDICATING THE SHEET NUMBER UPON WHICH THE PIECE IS DETAILED ALONG WITH THE SHIPPING PIECE MARK.
 ALL ELEVATIONS AND STATIONS ARE GIVEN IN METERS.
 FILL GAP BETWEEN INSIDE SPLICE PLATES AND WEB AT BOTTOM FLANGE WITH SILICON CAULKING AS APPROVED BY ENGINEER (NOT BY H.S.S.I.).

CONTRACTOR NOTE:
 ELEVATIONS ARE GIVEN TO BOTTOM OF STEEL - DO NOT POUR TO FINAL ELEVATIONS WITHOUT VERIFICATION OF BEARING HEIGHTS AND BRIDGE SEATS.



VTrans
 RECEIVED
 OK'D BY: [Signature]
 JUN 03 2005
 RESUBMIT: _____ APPROVED: _____
 BY: _____ DATE: _____

ERECTOR NOTE: ALL BOLTS MUST BE LOCATED IN ACCORDANCE WITH THIS LIST OF FIELD CONNECTIONS. HIGH STEEL STRUCTURES WILL NOT BE RESPONSIBLE FOR FURNISHING ADDITIONAL BOLTS OR FOR ANY OTHER RELATED COSTS OR DAMAGES RESULTING FROM IMPROPER LOCATIONS OF BOLTS

LINE	ACTUAL NUMBER REQ'D	BOLT DIAM.	BOLT LENGTH	BOLTS PER CONN.	NO. OF CONN.	GRIP	THICKNESS OF PIECES JOINED				PIECES CONNECTED AND REMARKS
1											ASTM A325, TYPE 3
2	560	7/8	3 1/2	112	5	51.8	15.9	20	15.9		WEB SPLICE
3	144	7/8	6	72	2	120	34.9	45	34.9	5.0	TOP FLG. SPLICE @ G1, G2 W/2 WASHERS
4	144	7/8	7	72	2	140	34.9	65	34.9	5.0	BOTT. FLG. SPLICE @ G1, G2 W/2 WASHERS
5	32	7/8	4	32	1	66.2	20.6	25	20.6		TOP FLG. SPLICE @ G3
6	32	7/8	4 1/4	32	1	73.2	20.6	32	20.6		BOTT. FLG. SPLICE @ G3
7	96	7/8	3 1/4	24	4	50.6	14.3	22	14.3		TOP & BOTT. FLG. SPLICE @ G4, G5
8	42	7/8	3 1/4	14	3	50.8	34.9	15.9			END CROSSFRAME - BRG. STIFF. TO GUSSET PLATE @ G1, G2 IN UNPAINTED AREA
9	28	7/8	3	14	2	41.3	25.4	15.9			END CROSSFRAME - BRG. STIFF. TO GUSSET PLATE @ G3 IN UNPAINTED AREA
10	42	7/8	2 3/4	14	3	38.1	22.2	15.9			END CROSSFRAME - BRG. STIFF. TO GUSSET PLATE @ G4, G5 IN UNPAINTED AREA
11	1480	7/8	2 1/2	20	74	31.8	15.9	15.9			INTERMEDIATE CROSSFRAME - CONN. PLATE TO GUSSET PLATE IN UNPAINTED AREA
12											ASTM A325, TYPE 1
13	42	7/8	3 1/4	14	3	50.8	34.9	15.9			END CROSSFRAME - BRG. STIFF. TO GUSSET PLATE @ G1, G2 IN PAINTED AREA
14	28	7/8	3	14	2	41.3	25.4	15.9			END CROSSFRAME - BRG. STIFF. TO GUSSET PLATE @ G3 IN PAINTED AREA
15	42	7/8	2 3/4	14	3	38.1	22.2	15.9			END CROSSFRAME - BRG. STIFF. TO GUSSET PLATE @ G4, G5 IN PAINTED AREA
16	120	7/8	2 1/2	20	6	31.8	15.9	15.9			INTERMEDIATE CROSSFRAME - CONN. PLATE TO GUSSET PLATE IN PAINTED AREA
17											

FIELD BOLT SUMMARY
 (4% ADDITIONAL BOLTS ADDED + 3 EA. FOR TESTING)
 ASTM A325 TYPE 3 BOLTS WITH HVY. HEX HEAD AND ASTM A563 GRADE DH3 HVY. HEX NUT
 153 - 7/8" HIGH STRENGTH BOLTS x 0'-7"
 153 - 7/8" HIGH STRENGTH BOLTS x 0'-6"
 37 - 7/8" HIGH STRENGTH BOLTS x 0'-4 1/4"
 37 - 7/8" HIGH STRENGTH BOLTS x 0'-4"
 585 - 7/8" HIGH STRENGTH BOLTS x 0'-3 1/2"
 147 - 7/8" HIGH STRENGTH BOLTS x 0'-3 1/4"
 33 - 7/8" HIGH STRENGTH BOLTS x 0'-3"
 47 - 7/8" HIGH STRENGTH BOLTS x 0'-2 3/4"
 1542 - 7/8" HIGH STRENGTH BOLTS x 0'-2 1/2"
 3034 HARD, FLAT F436 WEATHERING WASHERS FOR 7/8" H. S. BOLTS
 ASTM A325 TYPE 1 BOLTS WITH HVY. HEX HEAD AND ASTM A563 GRADE DH HVY. HEX NUT
 47 - 7/8" HIGH STRENGTH BOLTS x 0'-3 1/4"
 33 - 7/8" HIGH STRENGTH BOLTS x 0'-3"
 47 - 7/8" HIGH STRENGTH BOLTS x 0'-2 3/4"
 128 - 7/8" HIGH STRENGTH BOLTS x 0'-2 1/2"
 255 HARD, FLAT F436 WASHERS FOR 7/8" H. S. BOLTS
 (RCT) INDICATES ROTATIONAL CAPACITY TESTED BOLTS. DO NOT MIX NUTS, BOLTS AND WASHERS FROM DIFFERENT CONTAINERS UNLESS ALL NUTS, BOLTS AND WASHERS HAVE THE SAME LOT NUMBER.

1	CAMBER DESIGN CHANGE	MGK	4-25-05
NO.	REVISION	BY	DATE

1170 Hempstead Road
 Lancaster, PA 17605-0008
 Phone 717/299-5211
HIGH STEEL STRUCTURES, INC.
 A Division of High Industries, Inc.

ERECTOR FRAMING PLAN
 U.S. RTE. 5 (BRIDGE #60) OVER LULLS BROOK
 U.S. RTE. 5 STA. 3+080.77 TO STA. 3+123.110
 TOWN OF HARTLAND
 WINDSOR COUNTY, VERMONT
 STATE OF VERMONT, AGENCY OF TRANSPORTATION
 STATE CONTRACT OR REF. NO. PROJECT NO. BRS-0113(22)
 CONTRACTOR MILLER CONSTRUCTION, INC.
 IN CHARGE: GLIDDEN (IH) MADE BY: MGK CHK'D BY: RC DATE: 4-18-05
 CONTRACT NUMBER: VT-05017-1 DRAWING NUMBER: E1 OF E2

BY: mkr/edg
 PLOTTED: 4/28/2005 9:56:37 AM

10655