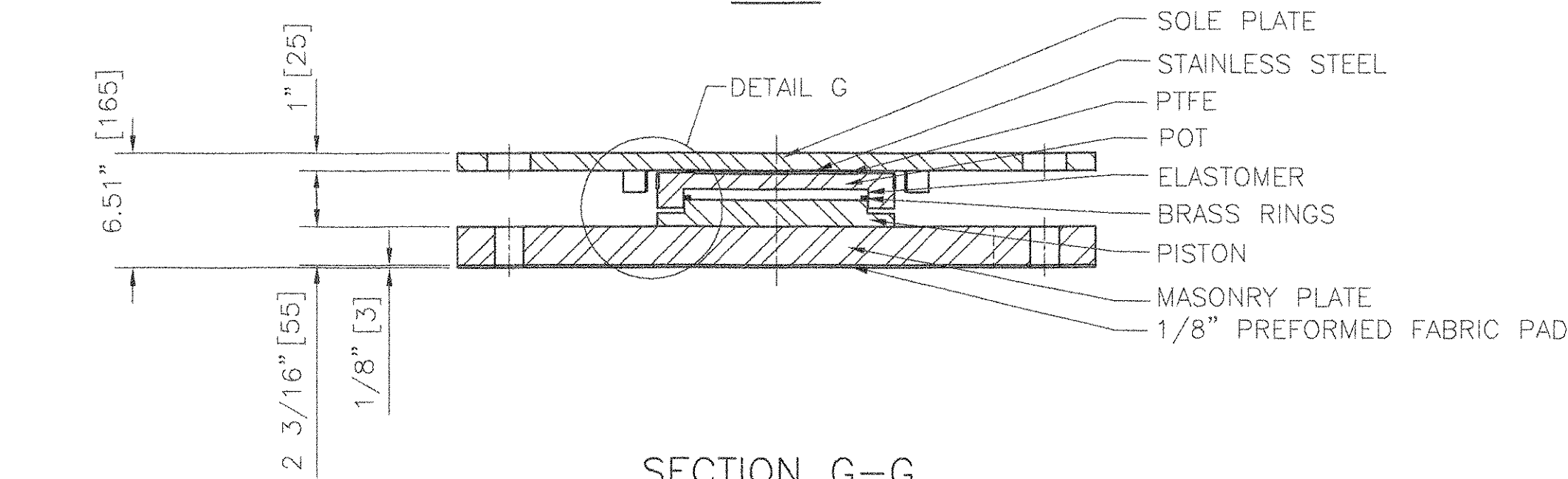


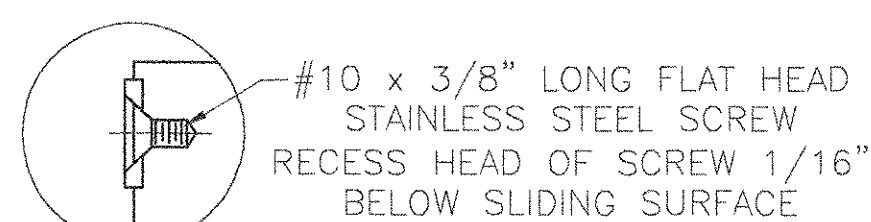
PLAN



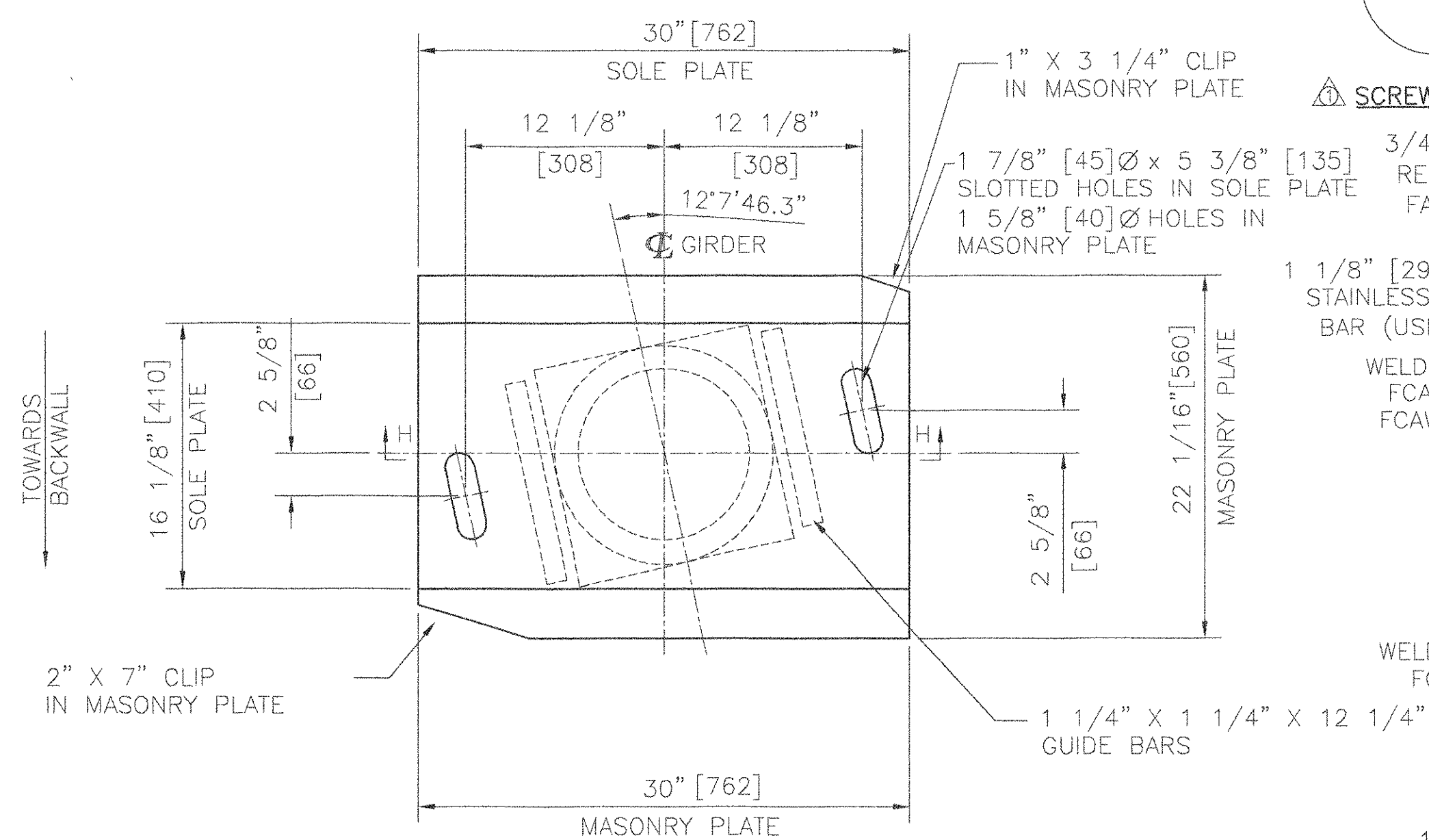
SECTION G-G

COSMEC GUIDED EXPANSION POT BEARING

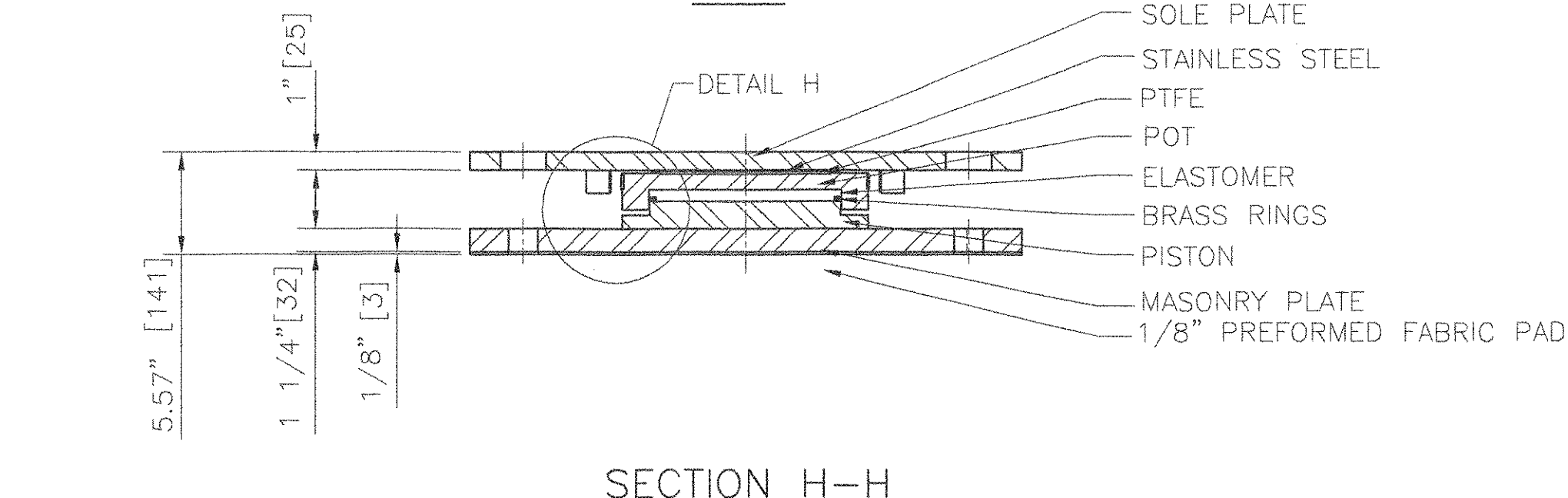
LOCATION: ABUTMENT #2; GIRDER #G2
 QUANTITY: 1
 TOTAL VERTICAL CAPACITY= 300 KIPS [1335 Kn]
 TOTAL HORIZONTAL CAPACITY= 30 KIPS [133.5 Kn]
 MOVEMENT CAPACITY= 3 13/16" [97]
 TRANSVERSE MOVEMENT CAPACITY= 1 1/8" [28]
 ROTATION CAPACITY= 0.015 RADIAN



SCREW DETAIL



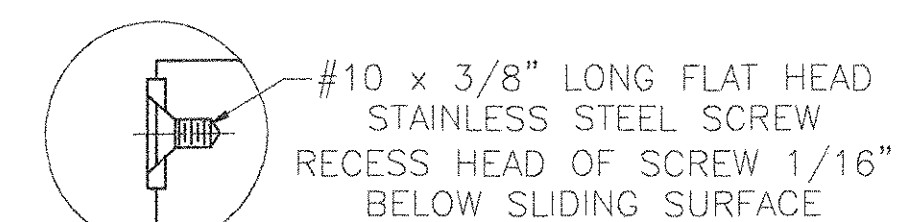
PLAN



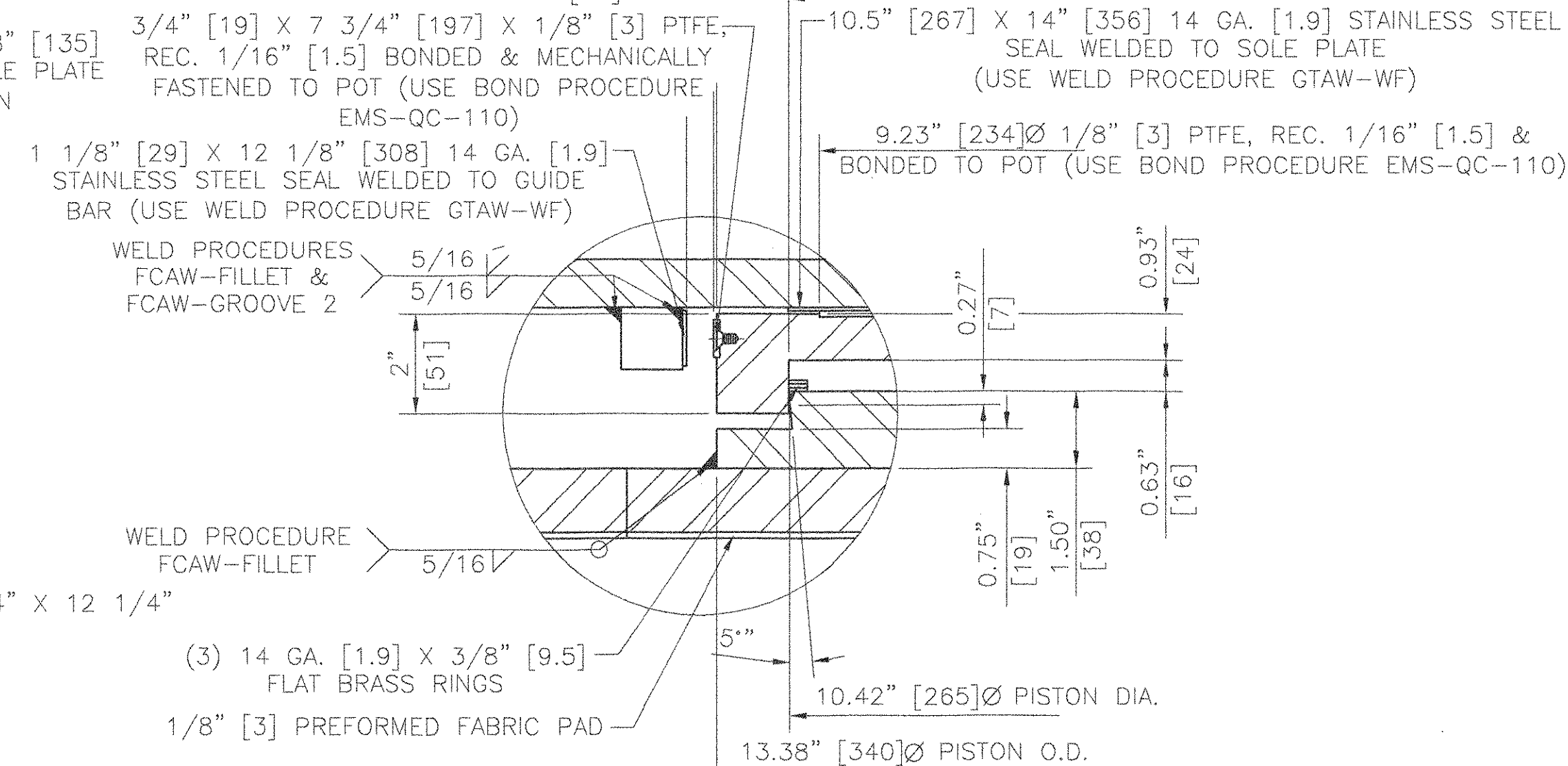
SECTION H-H

COSMEC GUIDED EXPANSION POT BEARING

LOCATION: ABUTMENT #2; GIRDER #G3
 QUANTITY: 1
 TOTAL VERTICAL CAPACITY= 300 KIPS [1335 Kn]
 TOTAL HORIZONTAL CAPACITY= 30 KIPS [133.5 Kn]
 MOVEMENT CAPACITY= 3 13/16" [97]
 TRANSVERSE MOVEMENT CAPACITY= 1 1/8" [28]
 ROTATION CAPACITY= 0.015 RADIAN



SCREW DETAIL

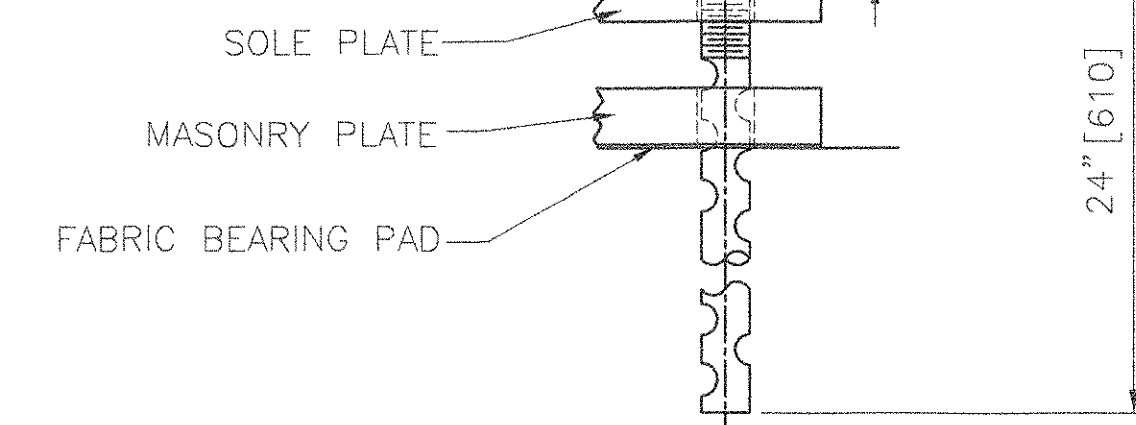


DETAIL H - BEARING

N.T.S.

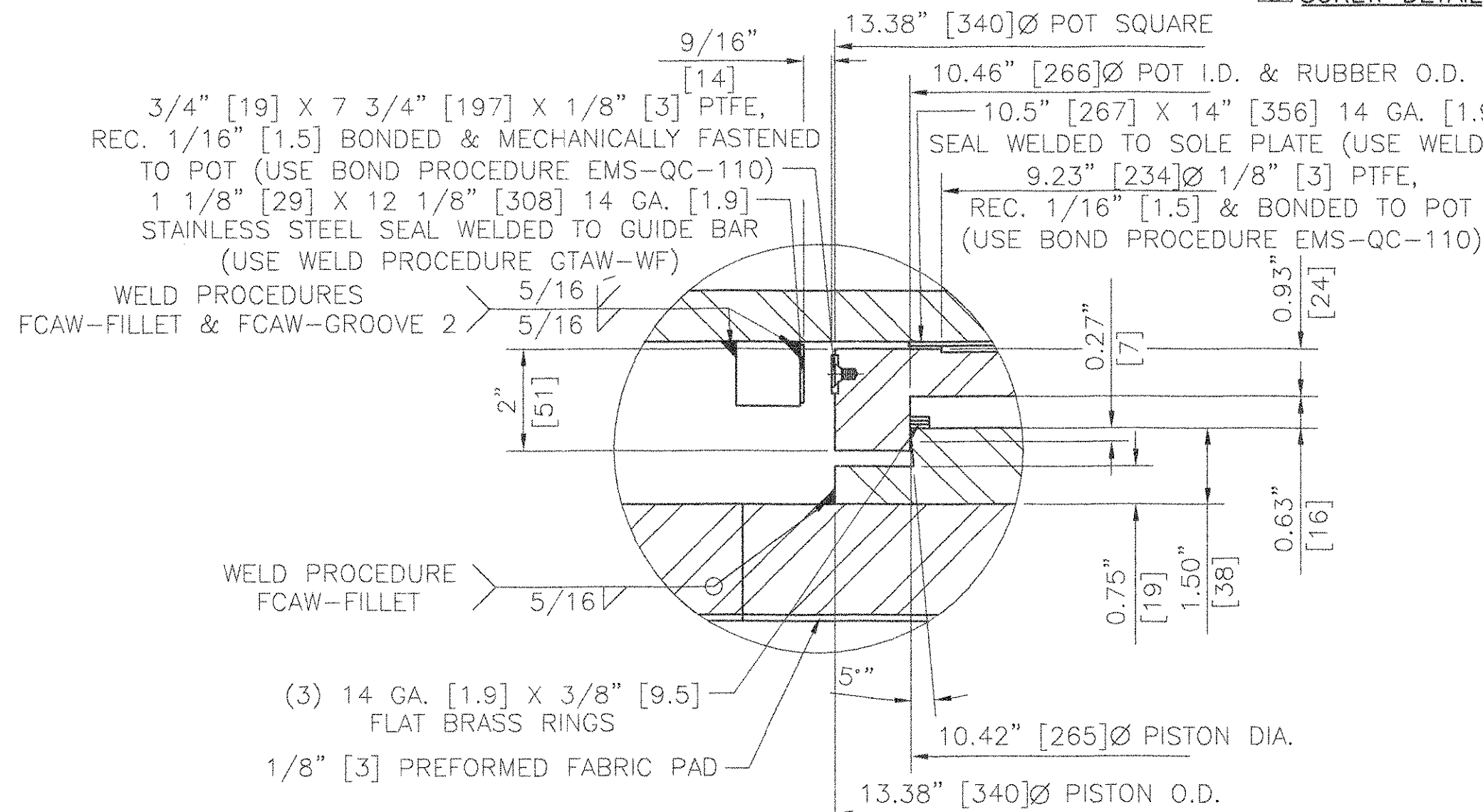
1 1/2" [38] x 24" [610] ANCHOR BOLTS SWEDGED, GALV. WITH 4" [102] THREAD (THREADS SHALL BE BURRED TO PREVENT NUT REMOVAL)

HEAVY HEX NUT (ASTM A563 GR.DH, GALV.)
 3/8" [10] x 3" [75] x 7 1/2" [190] PLATE WASHER WITH 1 5/8" [40] HOLE (TYP.) (A.36, GALV.)



ANCHOR BOLT DETAIL

N.T.S.



DETAIL G - BEARING

N.T.S.

BEARING NOTES

- ALL MATERIALS USED IN THE FABRICATION OF THESE BEARINGS SHALL BE MADE IN THE U.S.A.
- BEARINGS ARE TO BE SHIPPED AS COMPLETE UNITS, STEEL BANDED, AND SHALL BE WRAPPED TO PROTECT FROM MOISTURE AND DIRT DURING TRANSIT AND STORAGE.
- LOCATION OF FABRICATION PLANT - 70 SOUTH STREET WALPOLE, MA 02081
- COSMEC, INC. REPRESENTATIVE - MR. MATT McANDREWS (508) 668-6600
- BEARINGS SHALL BE STORED IN A CLEAN, DRY, LEVEL UPRIGHT POSITION.
- UNITS: INCH[mm]
- BEARINGS MUST NOT BE DISASSEMBLED
- ALL BEARINGS SHALL BE METALLIZED AS PER SECTION 531.04(B) & 506.15 (a) & (b). AREAS OF METALLIZED DAMAGED BY FIELD WELDS OR HANDLING SHALL BE REPAIRED PER SUPPLEMENTAL SPECIFICATION 513.06(F).
- PROTECT PTFE & S.S. SURFACES FROM DIRT, WELD SPATTER, & ANY OTHER FOREIGN SUBSTANCES.
- PRIOR TO METALLIZING, ALL CORNERS AND EDGES OF STEEL PLATES, SHAPES, ETC. SHALL BE GROUND TO A 1/16" [1.6] RADIUS.

MATERIALS

STEEL - ASTM A709 GRADE 36, ZINC METALLIZED & SEALED
 STAINLESS STEEL - ASTM A240 TYPE 304, 10 RMS FINISH OR LESS
 PREFORMED FABRIC PAD - AASHTO DIV. II SPEC. 18.4.9.1
 ANCHOR BOLTS - ASTM F1554 GRADE 55
 PTFE - ASTM D.4894 VIRGIN UNFILLED
 ELASTOMER - AASHTO 50 DUROMETER NEOPRENE
 BRASS SEALING RINGS - ASTM B.36 HALF HARD

RECEIVED

OK'D BY: JTC OK'D BY:

NOV 09 2005

REVISION APPROVED

BY TRS DATE 11/16/05

STATE OF VERMONT
 AGENCY OF TRANSPORTATION
 TOWN OF HARTLAND
 U.S. ROUTE 5 OVER LULLS BROOK
 BRIDGE NO. 60

COSMEC, INC.

70 SOUTH STREET
 WALPOLE, MA 02081

SCALE: 1/8"=1" DRAWN BY: MRR CHECKED BY: MCM
 DATE: 7-20-05 DATE: 8-17-05

COSMEC POT BEARINGS

REV.	DETAIL MECHANICAL FASTENER	BY	MRR	DATE	11-3-05	OK'D	MCM	DATE	11-4-05	CUSTOMER	MILLER CONSTRUCTION, INC.	S.O. NUMBER	60304	DRAWING NUMBER	4463	REV.	1
------	----------------------------	----	-----	------	---------	------	-----	------	---------	----------	---------------------------	-------------	-------	----------------	------	------	---