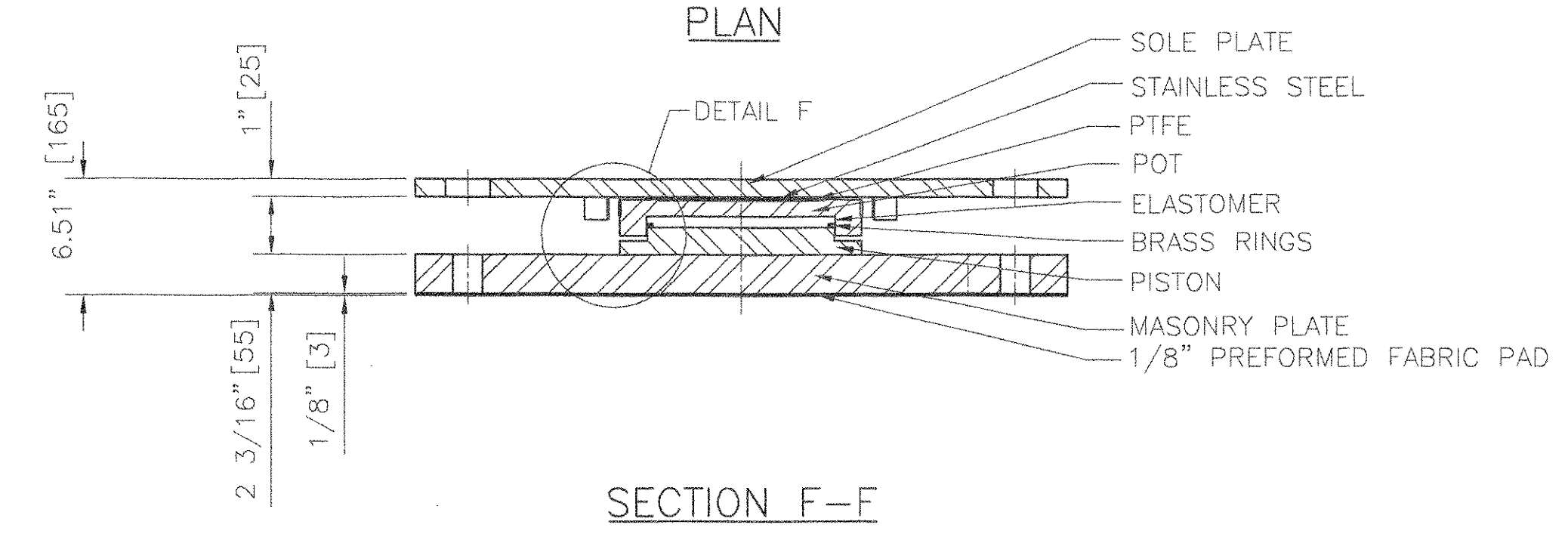
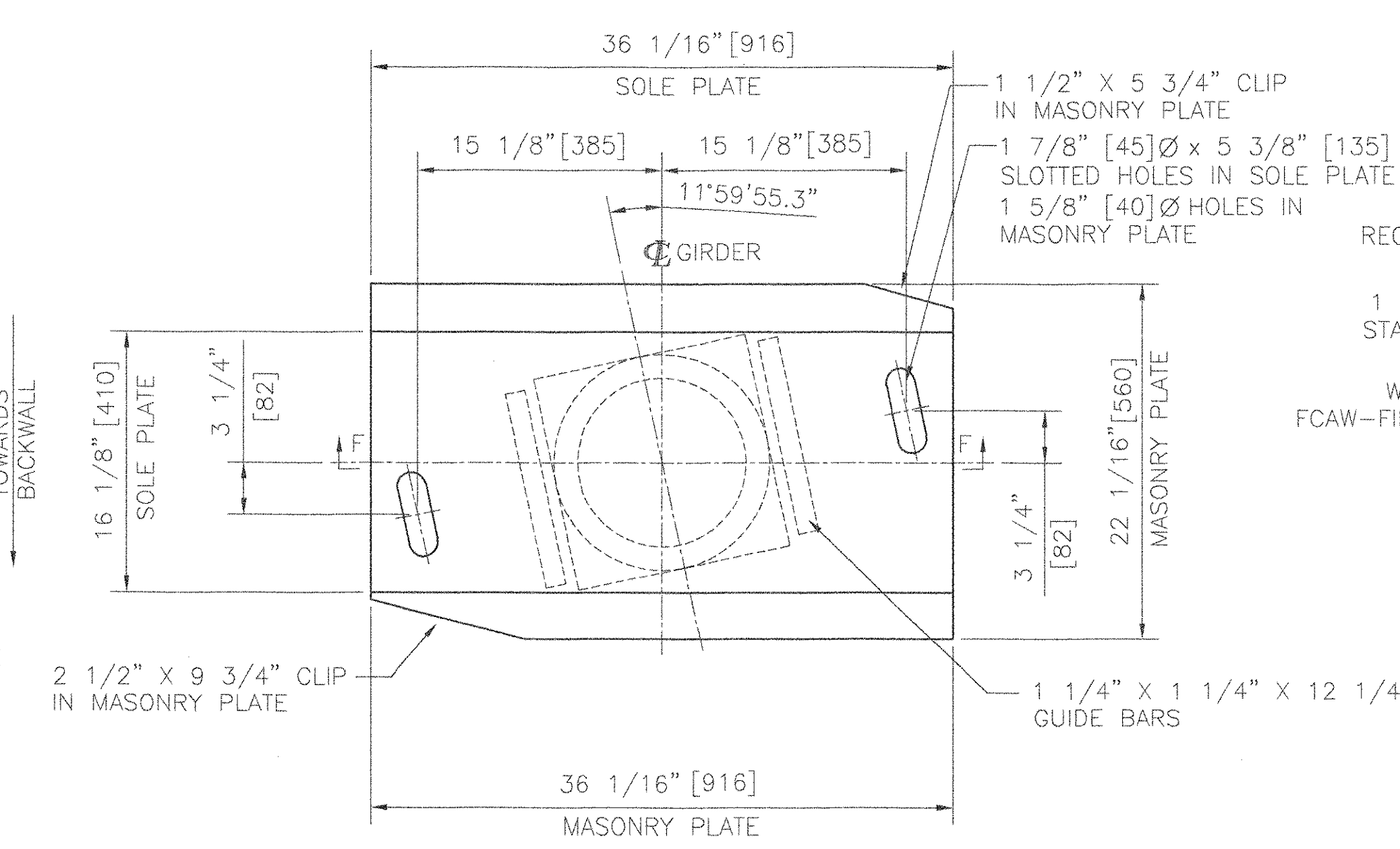


COSMEC FIXED POT BEARING

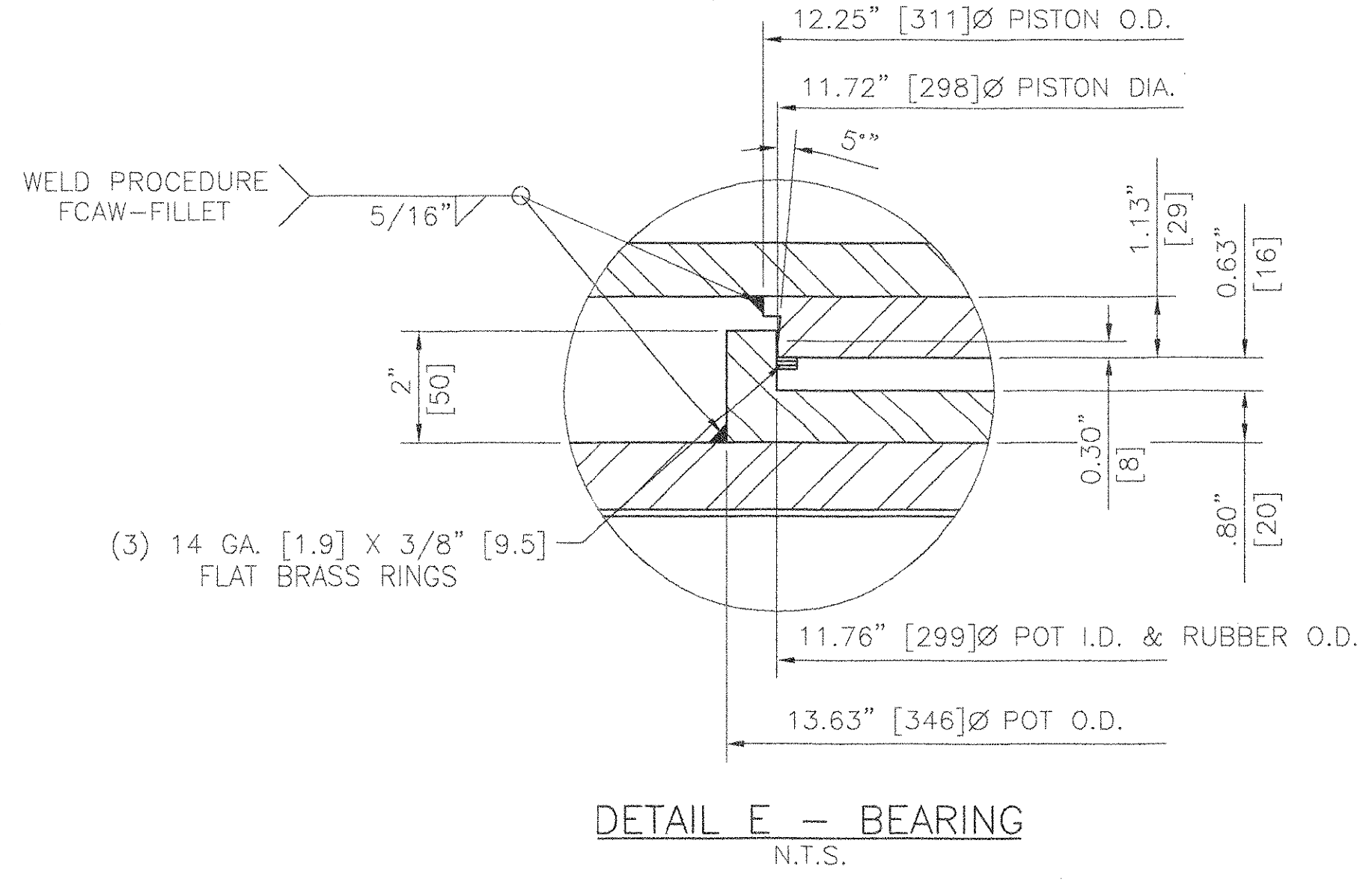
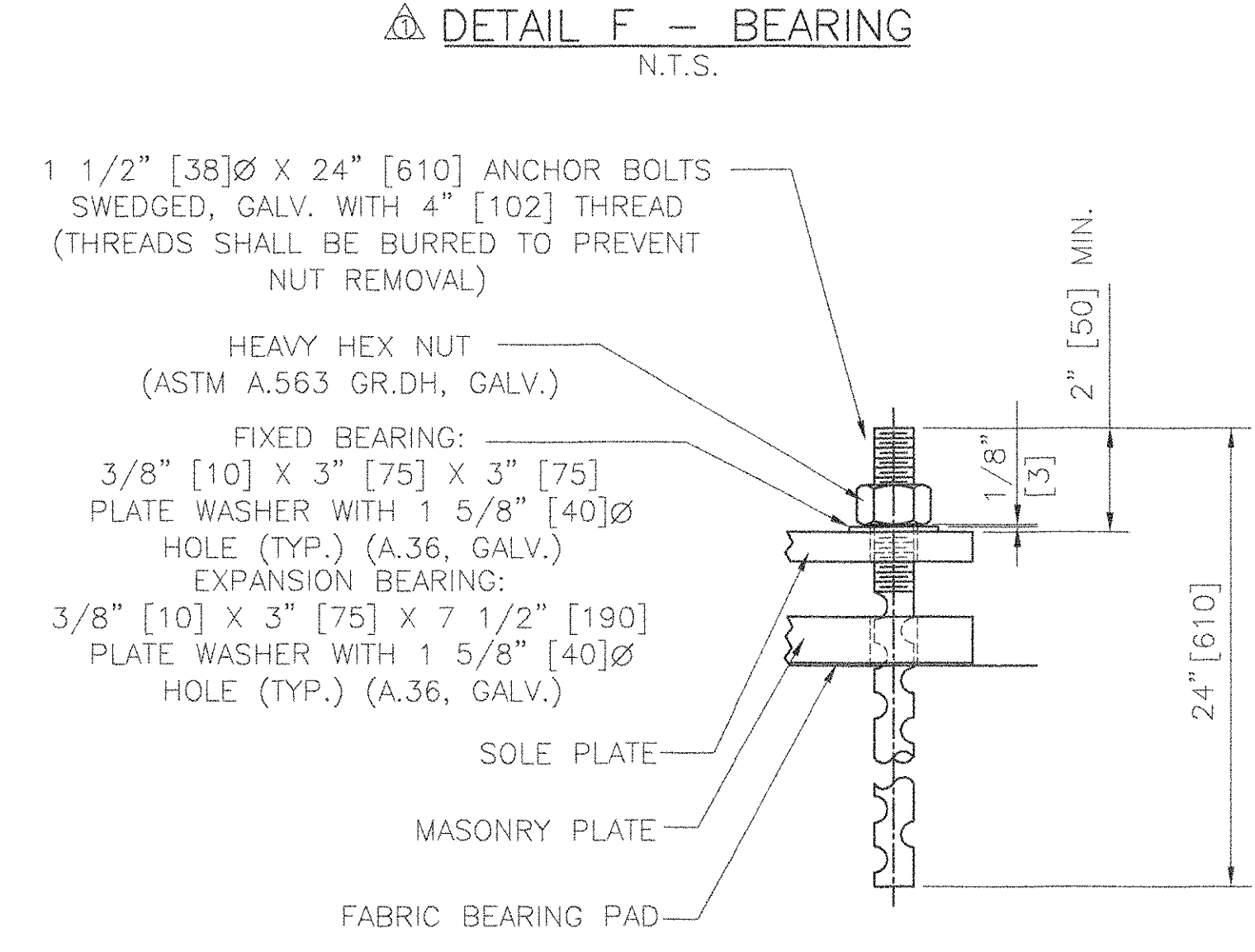
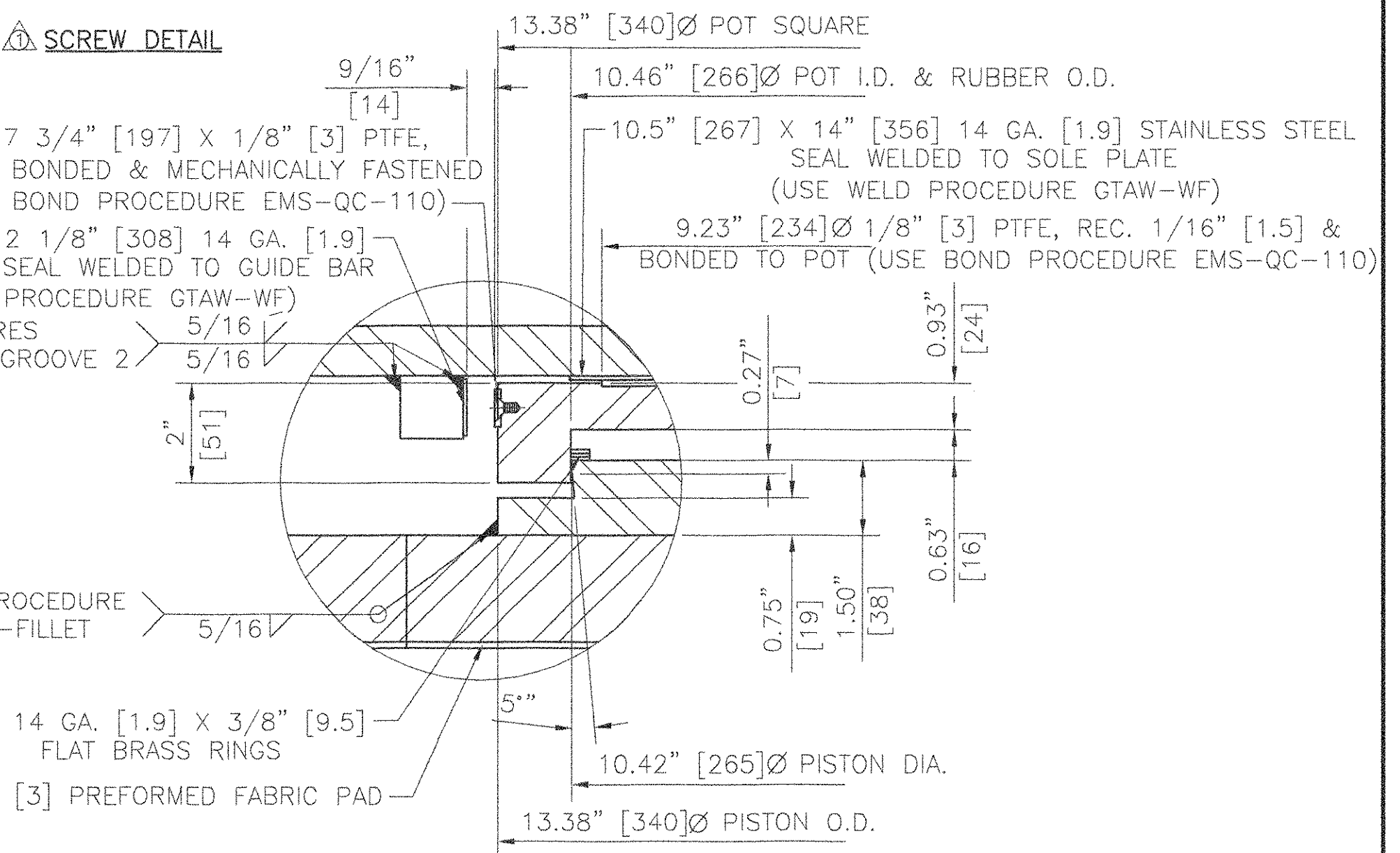
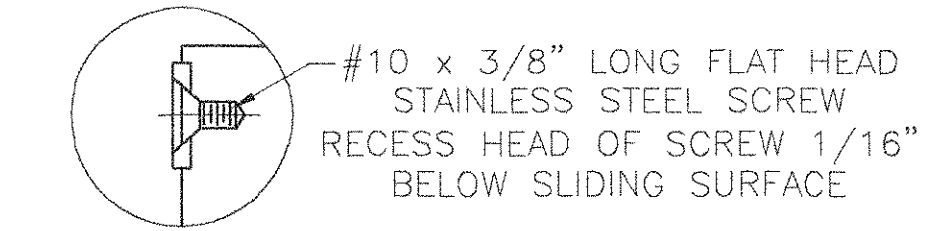
LOCATION: ABUTMENT #1; GIRDER #G5
 QUANTITY: 1
 TOTAL VERTICAL CAPACITY= 380 KIPS [1690 Kn]
 TOTAL HORIZONTAL CAPACITY= 38 KIPS [169 Kn]
 MOVEMENT CAPACITY= 0"
 ROTATION CAPACITY= 0.015 RADIAN



COSMEC GUIDED EXPANSION POT BEARING

LOCATION: ABUTMENT #2; GIRDER #G1
 QUANTITY: 1
 TOTAL VERTICAL CAPACITY= 300 KIPS [1335 Kn]
 TOTAL HORIZONTAL CAPACITY= 30 KIPS [133.5 Kn]
 MOVEMENT CAPACITY= 3 13/16\"/>

- BEARING NOTES**
- ALL MATERIALS USED IN THE FABRICATION OF THESE BEARINGS SHALL BE MADE IN THE U.S.A.
 - BEARINGS ARE TO BE SHIPPED AS COMPLETE UNITS, STEEL BANDED, AND SHALL BE WRAPPED TO PROTECT FROM MOISTURE AND DIRT DURING TRANSIT AND STORAGE.
 - LOCATION OF FABRICATION PLANT - 70 SOUTH STREET WALPOLE, MA 02081
 - COSMEC, INC. REPRESENTATIVE - MR. MATT McANDREWS (508) 668-6600
 - BEARINGS SHALL BE STORED IN A CLEAN, DRY, LEVEL UPRIGHT POSITION.
 - UNITS: INCH[mm]
 - BEARINGS MUST NOT BE DISASSEMBLED
 - ALL BEARINGS SHALL BE METALLIZED AS PER SECTION 531.04(B) & 506.15 (a) & (b). AREAS OF METALLIZED DAMAGED BY FIELD WELDS OR HANDLING SHALL BE REPAIRED PER SUPPLEMENTAL SPECIFICATION 513.06(F).
 - PROTECT PTFE & S.S. SURFACES FROM DIRT, WELD SPATTER, & ANY OTHER FOREIGN SUBSTANCES.
 - PRIOR TO METALLIZING, ALL CORNERS AND EDGES OF STEEL PLATES, SHAPES, ETC. SHALL BE GROUND TO A 1/16\"/>



- MATERIALS**
- STEEL - ASTM A709 GRADE 36, ZINC METALLIZED & SEALED
 - STAINLESS STEEL - ASTM A240 TYPE 304, 10 RMS FINISH OR LESS
 - PREFORMED FABRIC PAD - AASHTO DIV. II SPEC. 18.4.9.1
 - ANCHOR BOLTS - ASTM F1554 GRADE 55
 - PTFE - ASTM D.4894 VIRGIN UNFILLED
 - ELASTOMER - AASHTO 50 DUROMETER NEOPRENE
 - BRASS SEALING RINGS - ASTM B.36 HALF HARD

RECEIVED
 CTD BY JWC OK'D BY
 NOV 09 2005
 RESUBMIT APPROVED
 BY TKS DATE 11/16/05

STATE OF VERMONT
 AGENCY OF TRANSPORTATION
 TOWN OF HARTLAND
 U.S. ROUTE 5 OVER LULLS BROOK
 BRIDGE NO. 60

COSMEC, INC.		70 SOUTH STREET WALPOLE, MA 02081	
SCALE: 1/8"=1"	DRAWN BY: MRR	CHECKED BY: MCM	
DATE: 7-20-05	DATE: 8-17-05		
COSMEC POT BEARINGS			
REV. DETAIL MECHANICAL FASTENER	BY MRR	DATE 11-3-05	OK'D MCM
CUSTOMER MILLER CONSTRUCTION, INC.	S.O. NUMBER 60304	DRAWING NUMBER 4462	REV. 1