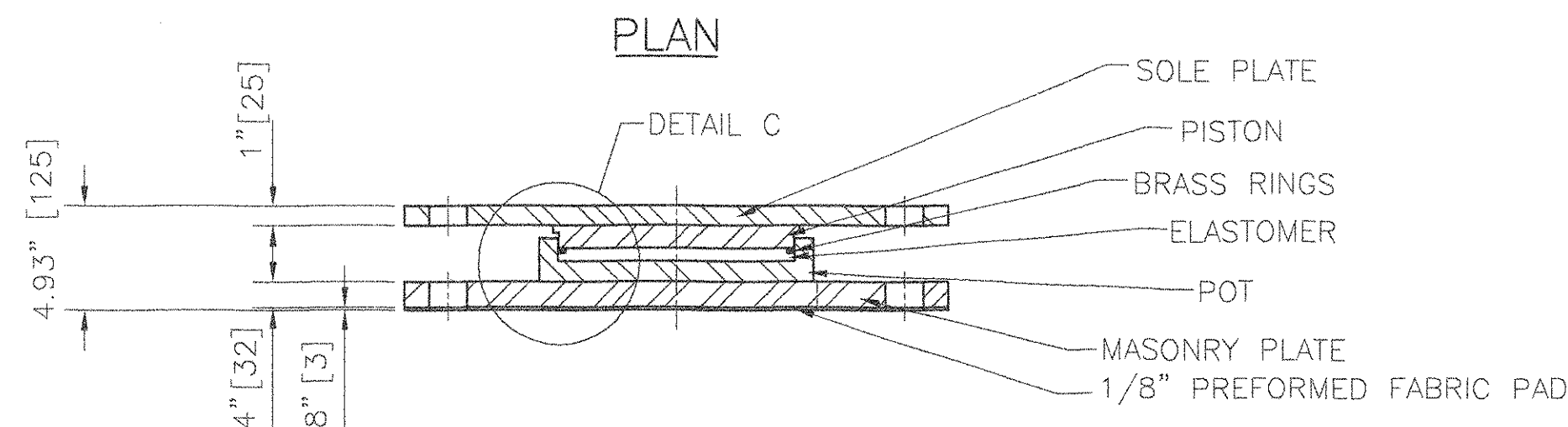
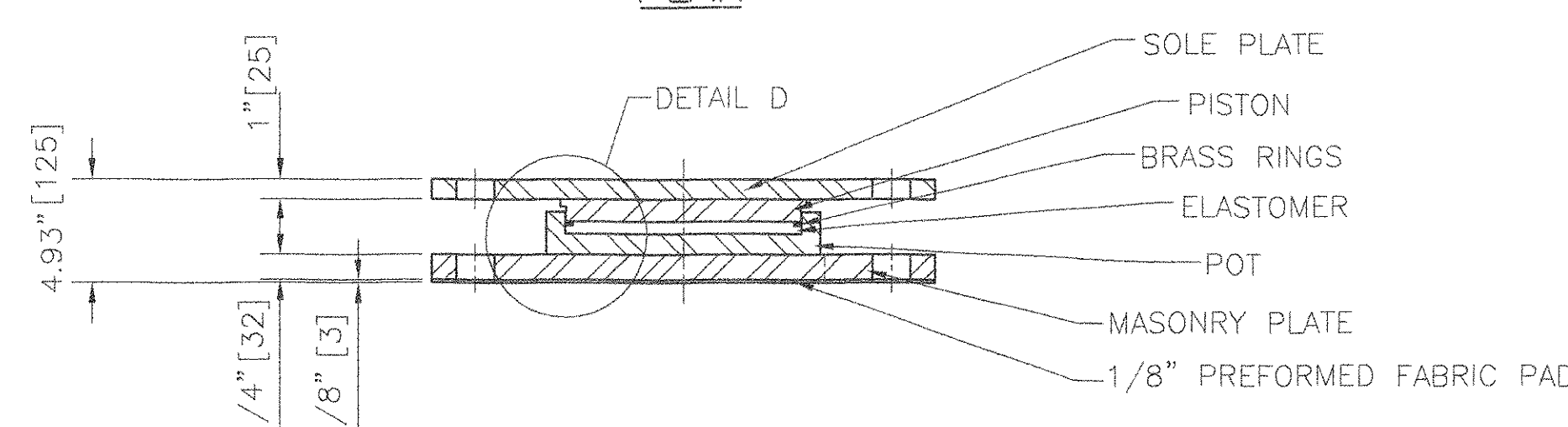


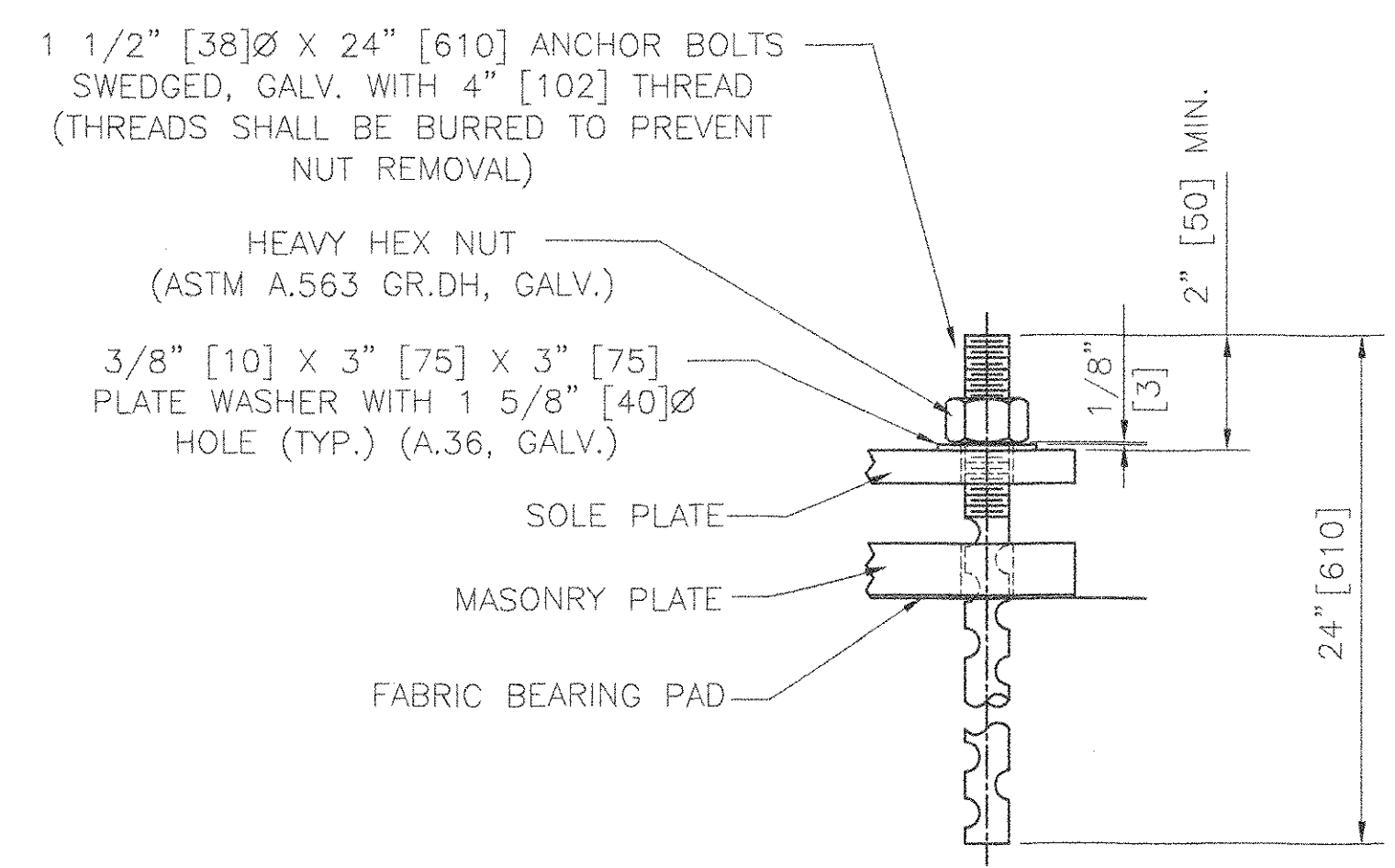
DETAIL D - BEARING
N.T.S.



SECTION C-C



SECTION D-D



ANCHOR BOLT DETAIL
N.T.S.

COSMEC FIXED POT BEARING

LOCATION: ABUTMENT #1; GIRDER #G3
 QUANTITY: 1
 TOTAL VERTICAL CAPACITY= 380 KIPS [1690 Kn]
 TOTAL HORIZONTAL CAPACITY= 38 KIPS [169 Kn]
 MOVEMENT CAPACITY= 0"
 ROTATION CAPACITY= 0.015 RADIAN

COSMEC FIXED POT BEARING

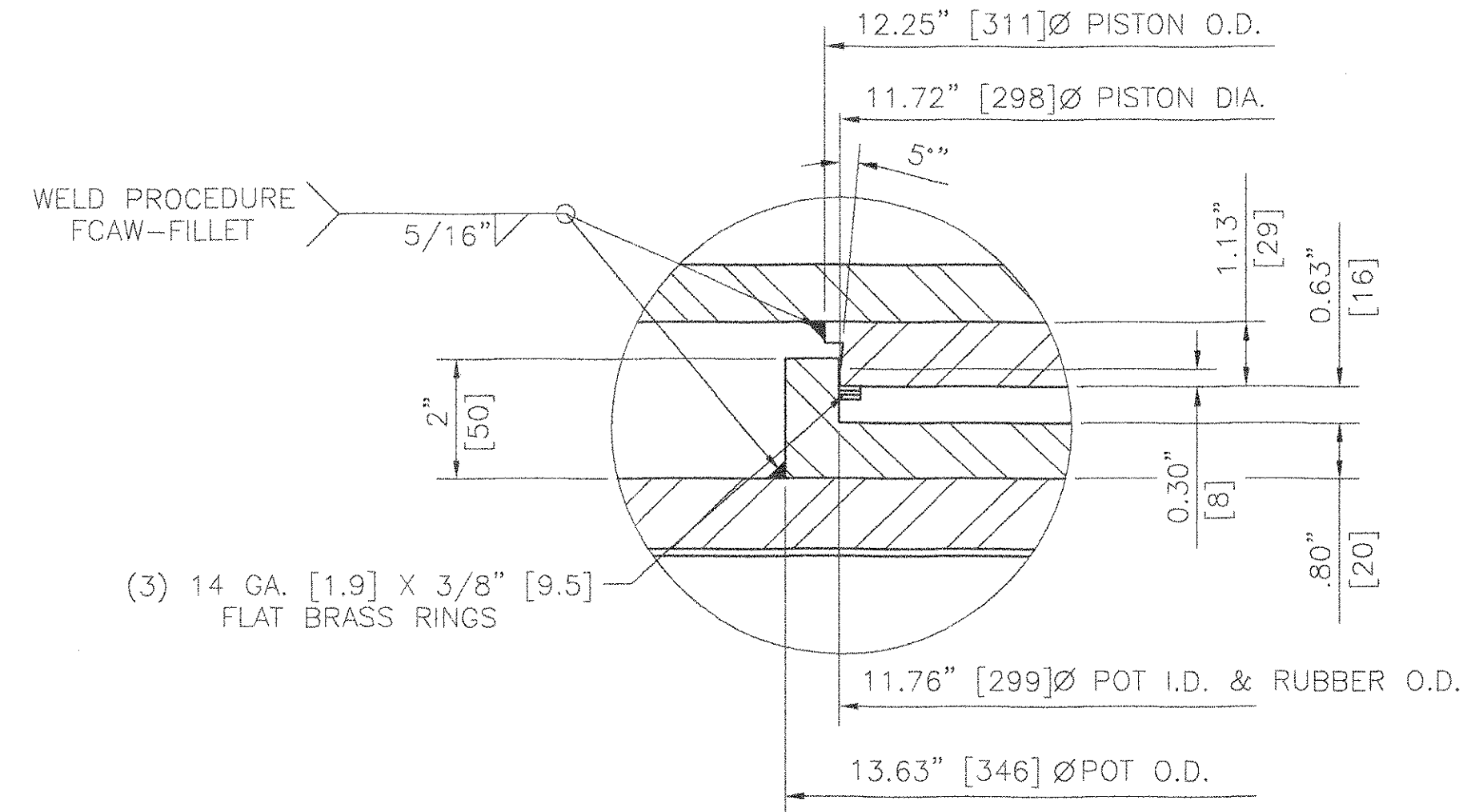
LOCATION: ABUTMENT #1; GIRDER #G4
 QUANTITY: 1
 TOTAL VERTICAL CAPACITY= 380 KIPS [1690 Kn]
 TOTAL HORIZONTAL CAPACITY= 38 KIPS [169 Kn]
 MOVEMENT CAPACITY= 0"
 ROTATION CAPACITY= 0.015 RADIAN

BEARING NOTES

- ALL MATERIALS USED IN THE FABRICATION OF THESE BEARINGS SHALL BE MADE IN THE U.S.A.
- BEARINGS ARE TO BE SHIPPED AS COMPLETE UNITS, STEEL BANDED, AND SHALL BE WRAPPED TO PROTECT FROM MOISTURE AND DIRT DURING TRANSIT AND STORAGE.
- LOCATION OF FABRICATION PLANT - 70 SOUTH STREET WALPOLE, MA 02081
- COSMEC, INC. REPRESENTATIVE - MR. MATT McANDREWS (508) 668-6600
- BEARINGS SHALL BE STORED IN A CLEAN, DRY, LEVEL UPRIGHT POSITION.
- UNITS: INCH[mm]
- BEARINGS MUST NOT BE DISASSEMBLED
- ALL BEARINGS SHALL BE METALLIZED AS PER SECTION 531.04(B) & 506.15 (a) & (b). AREAS OF METALLIZED DAMAGED BY FIELD WELDS OR HANDLING SHALL BE REPAIRED PER SUPPLEMENTAL SPECIFICATION 513.06(F).
- PRIOR TO METALLIZING, ALL CORNERS AND EDGES OF STEEL PLATES, SHAPES, ETC. SHALL BE GROUND TO A 1/16" [1.6] RADIUS.

MATERIALS

STEEL - ASTM A709 GRADE 36, ZINC METALLIZED & SEALED
 PREFORMED FABRIC PAD - AASHTO DIV. II SPEC. 18.4.9.1
 ANCHOR BOLTS - ASTM F1554 GRADE 55
 ELASTOMER - AASHTO 50 DUROMETER NEOPRENE
 BRASS SEALING RINGS - ASTM B.36 HALF HARD



DETAIL C - BEARING
N.T.S.

RECEIVED
 OK'D BY: JWC OK'D BY: JCF
 SEP 22 2005
 RESUBMIT APPROVED
 BY TAB DATE 11/2/05

STATE OF VERMONT
 AGENCY OF TRANSPORTATION
 TOWN OF HARTLAND
 U.S. ROUTE 5 OVER LULLS BROOK
 BRIDGE NO. 60

COSMEC, INC. 70 SOUTH STREET WALPOLE, MA. 02081

SCALE: 1/8"=1" DRAWN BY: MRR CHECKED BY: MCM
 DATE: 7-20-05 DATE: 8-17-05

COSMEC POT BEARINGS

REV.	BY	DATE	OK'D	DATE	CUSTOMER	S.Q. NUMBER	DRAWING NUMBER	REV.
					MILLER CONSTRUCTION, INC.	60304	4461	

08866