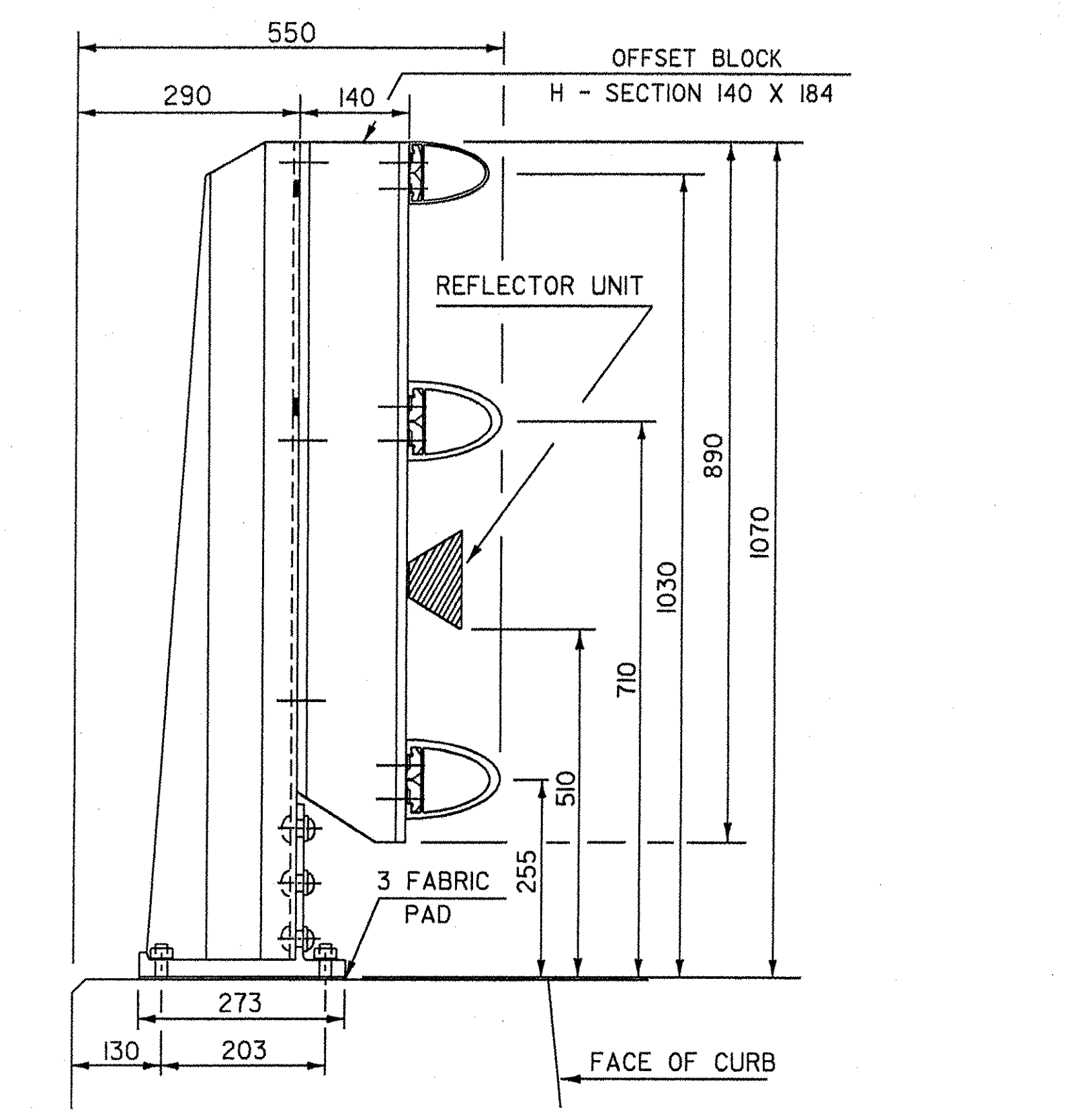
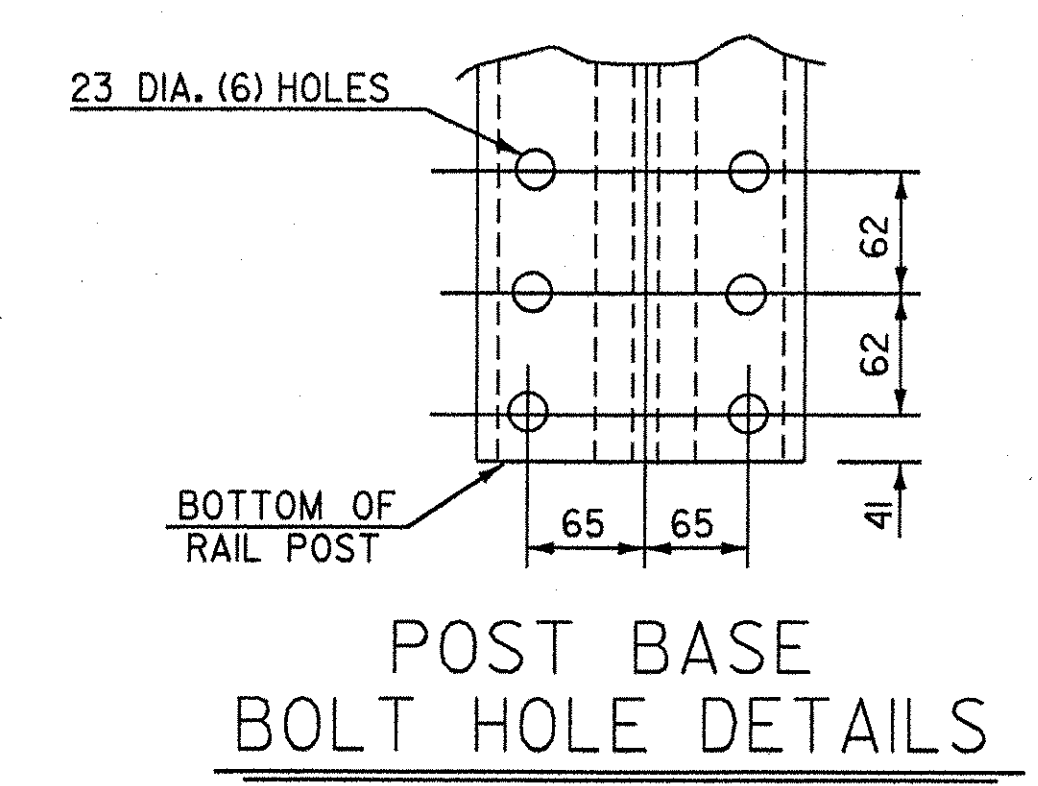
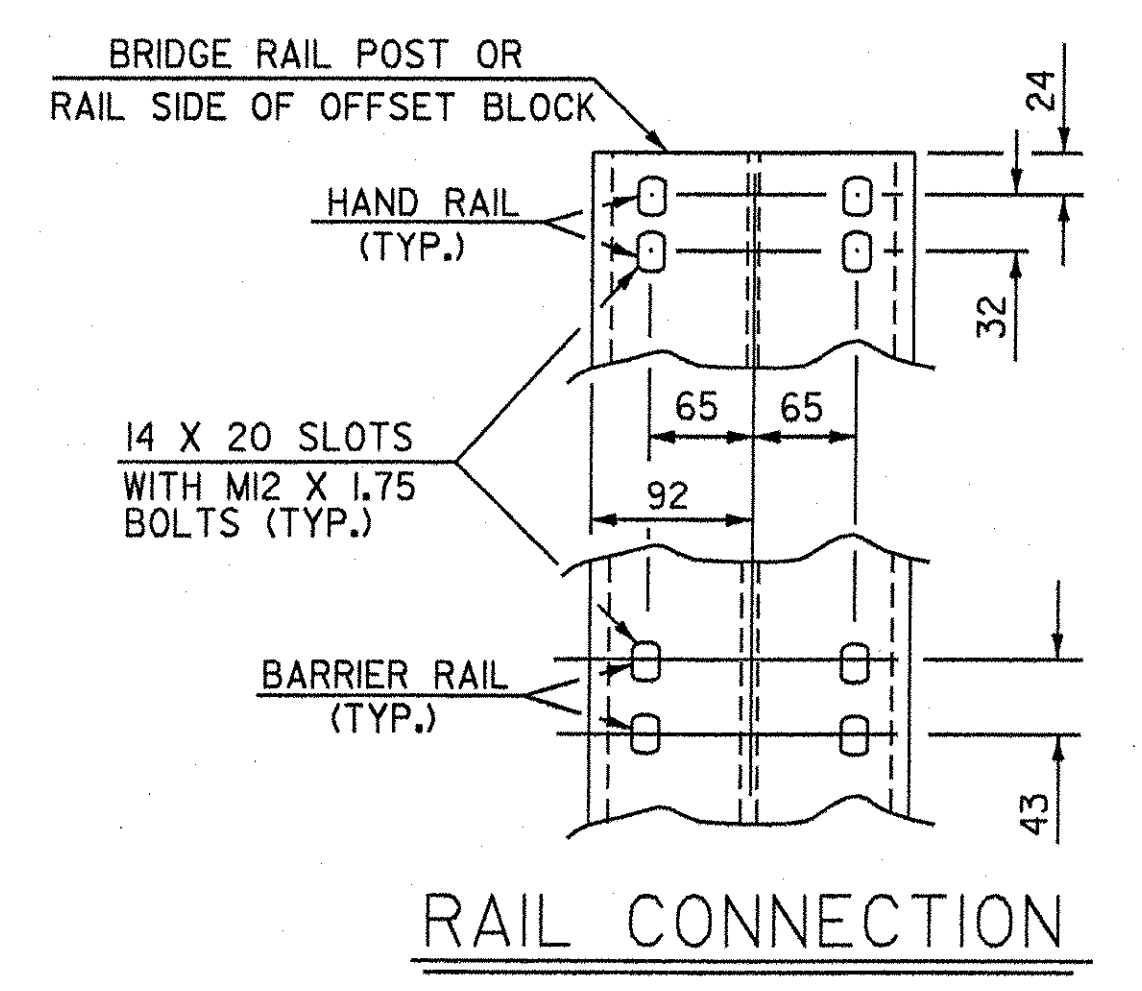
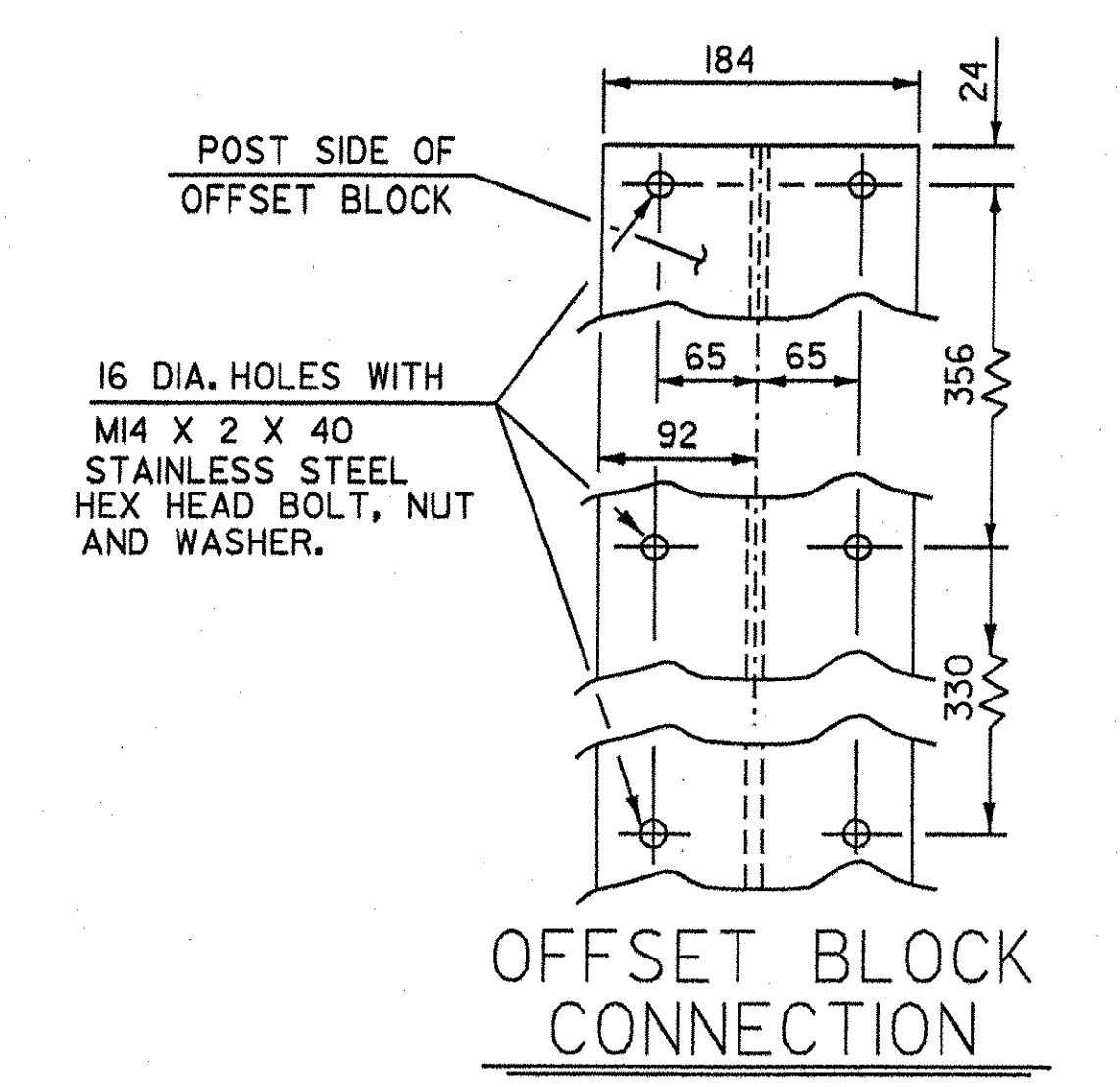
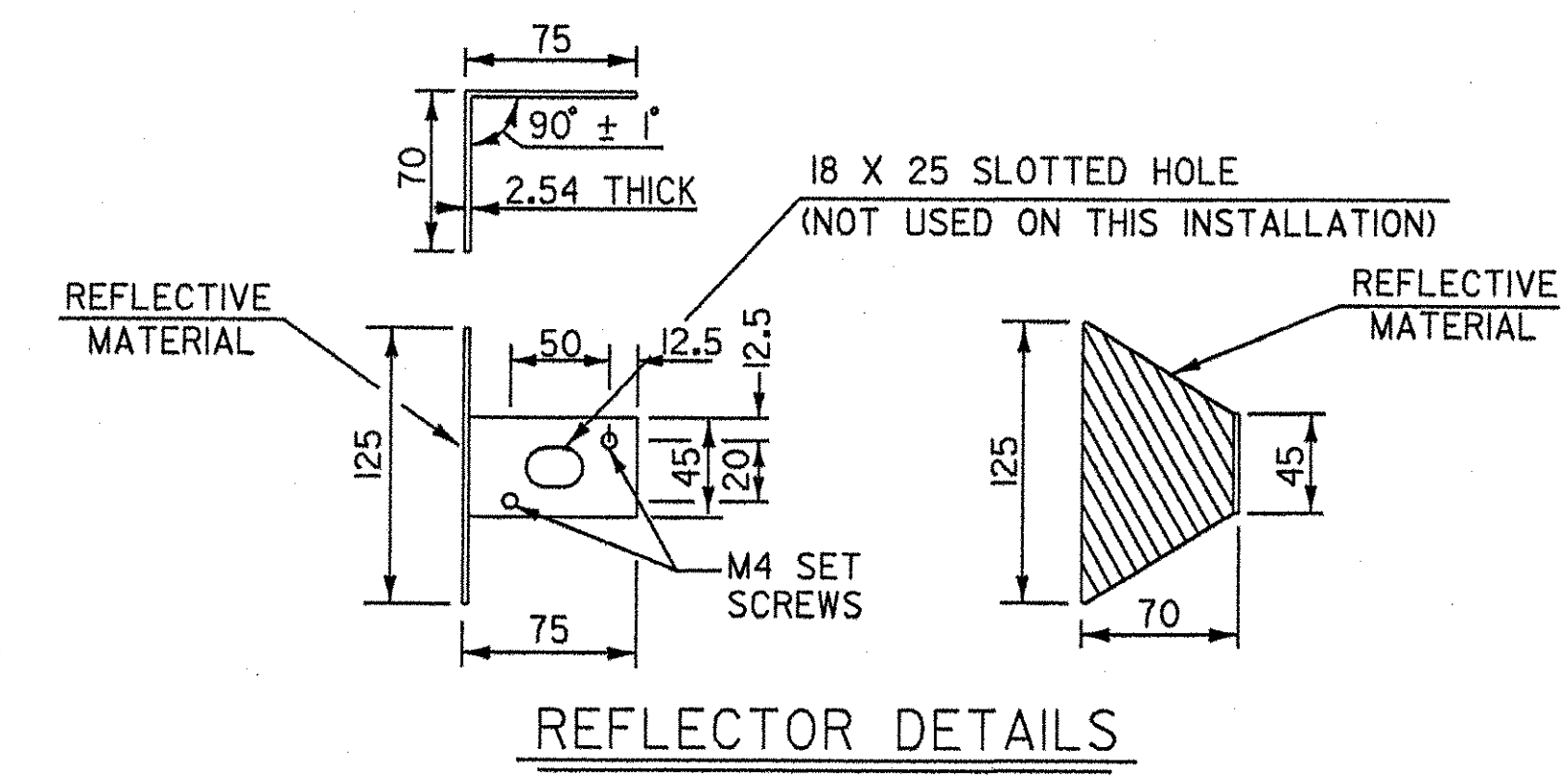


THIS REFLECTORIZED ALUMINUM DELINEATOR IS TO BE ERECTED EVERY 9 m (OR CLOSEST POST) WITH 2 M4 X 0.7 X 20 SET SCREWS.

DELINEATORS SHALL MEET SPECIFICATION REQUIREMENTS FOR ASTM B 209M ALLOY 5052-H32.

REFLECTIVE MATERIAL SHALL MEET THE REQUIREMENTS OF SUBSECTION 750.08 AND SHALL BE OF ENCAPSULATED LENS SILVER OR AMBER. AMBER IS TO BE INSTALLED ON THE DRIVER'S LEFT AND SILVER ON THEIR RIGHT.

ON BRIDGES WITH A SIDEWALK, DELINEATORS ARE NOT TO BE INSTALLED ON THE SIDEWALK SIDE OF THE BRIDGE (I.E. DELINEATORS INSTALLED ONLY ON THE CURB SIDE AND ON THE APPROACH RAIL ON THE CURB SIDE) PAYMENT SHALL BE SUBSIDIARY TO ALL OTHER ITEMS.



RAIL POST DETAILS ON SUPERSTRUCTURE

REVISIONS AND CORRECTIONS	
DECEMBER 18, 1997 - ORIGINAL APPROVAL DATE	
REVISION: COPING DETAIL MODIFIED, JHW 06/16/98	
STATE OF VERMONT AGENCY OF TRANSPORTATION	
Town Of	HARTLAND
Bridge No.	60
Highway No.	U.S. ROUTE 5
Log Sta.	
Surv. Sta.	
U.S. ROUTE 5 OVER LULLS BROOK	
ALUMINUM BRIDGE RAILING DETAILS 1 OF 3	
Designed By	VAOT
Drawn By	VAOT
Checked By	S. BAKI
Date	1/00
Bridge Design Supervisor	J. MIECZKOWSKI
Date	1/00
PROJECT	HARTLAND
PROJECT NO.	BRS No. 0113(22)
I.G.C. info: M:\456201\VAOT Hartland\struct\zf204rd.dgn	
Bridge Sheet No.	BRI32
Sheet	67 of 86