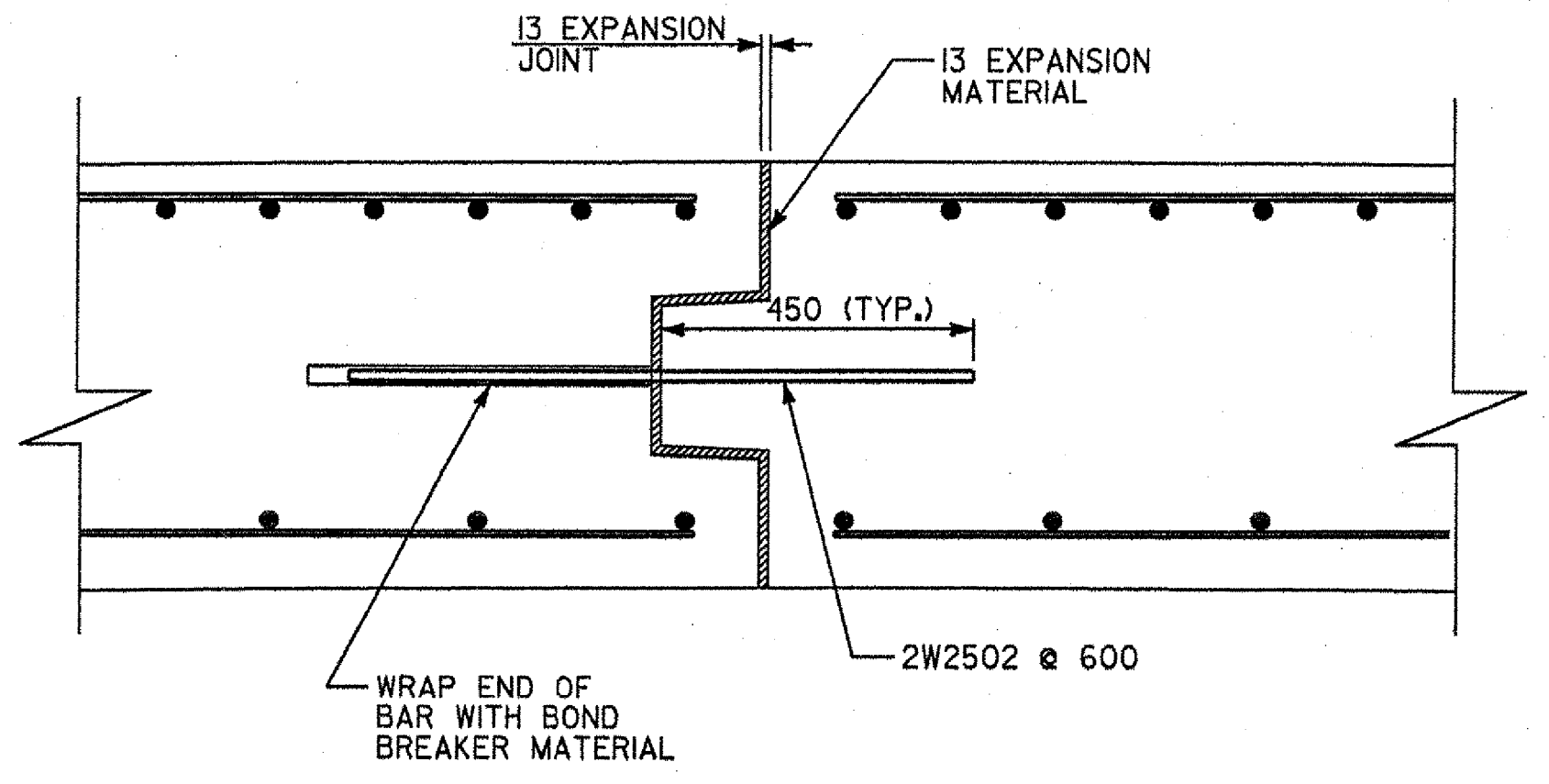
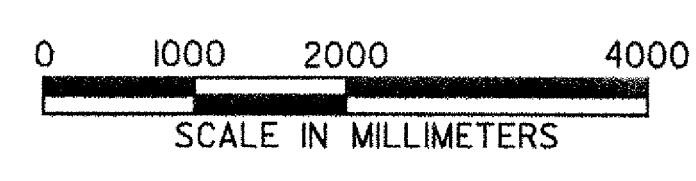
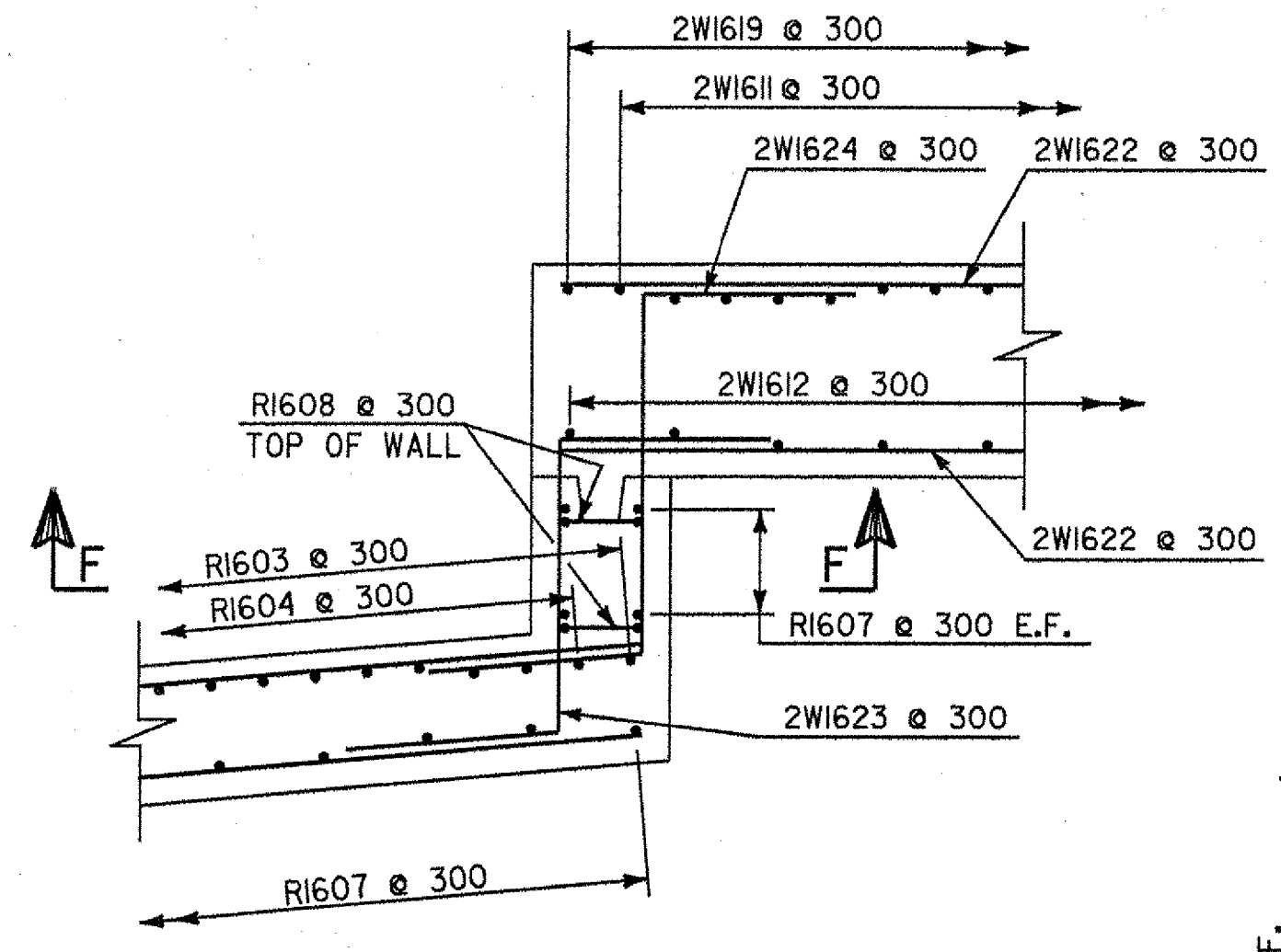
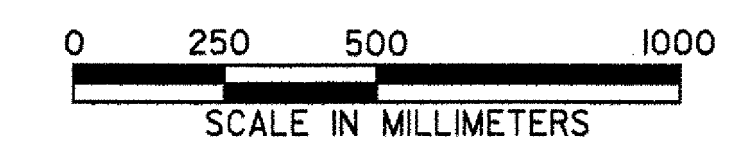


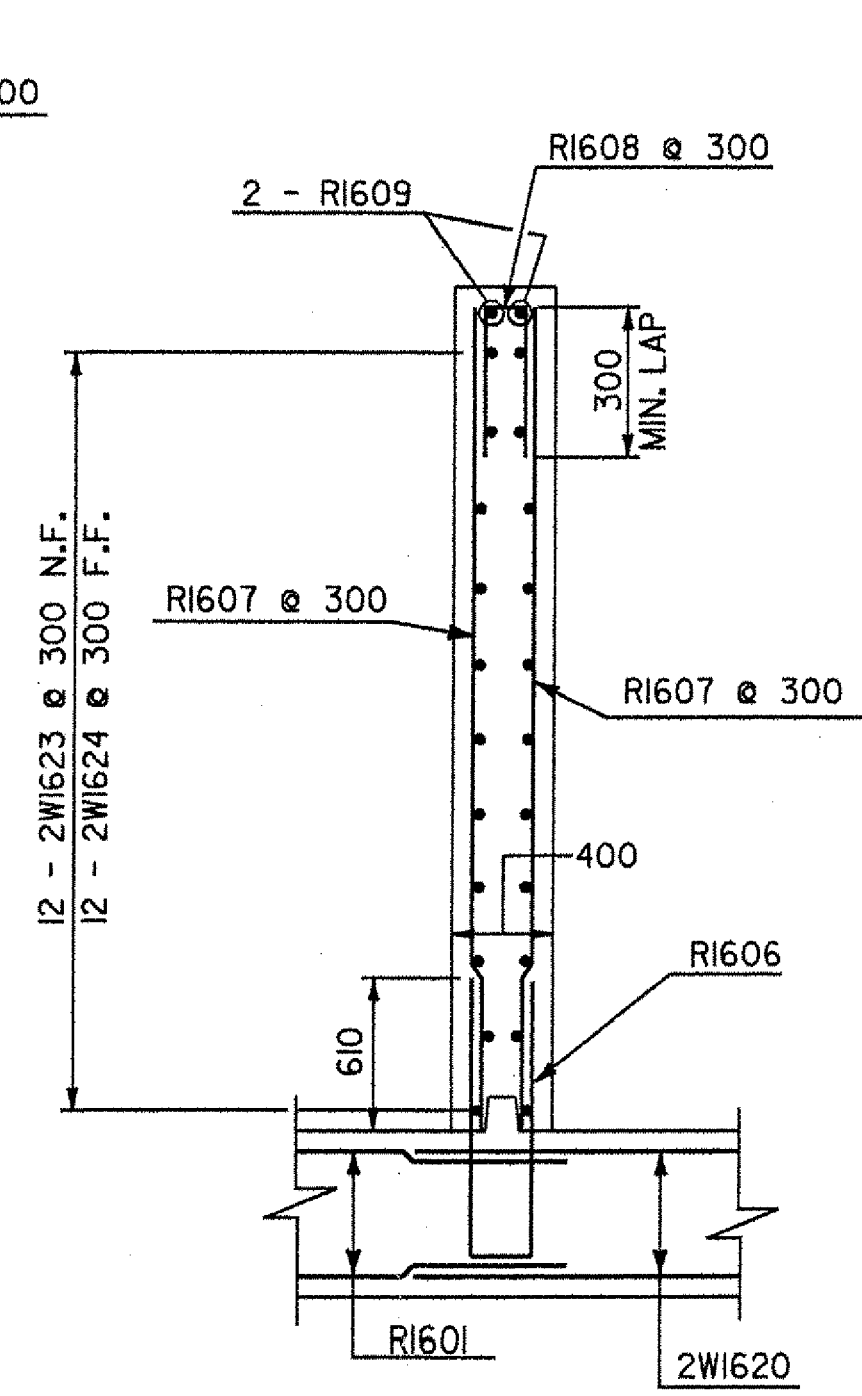
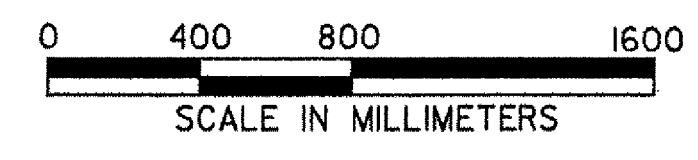
**RETAINING WALL & WING WALL NO. 2  
 REINFORCING PLAN**



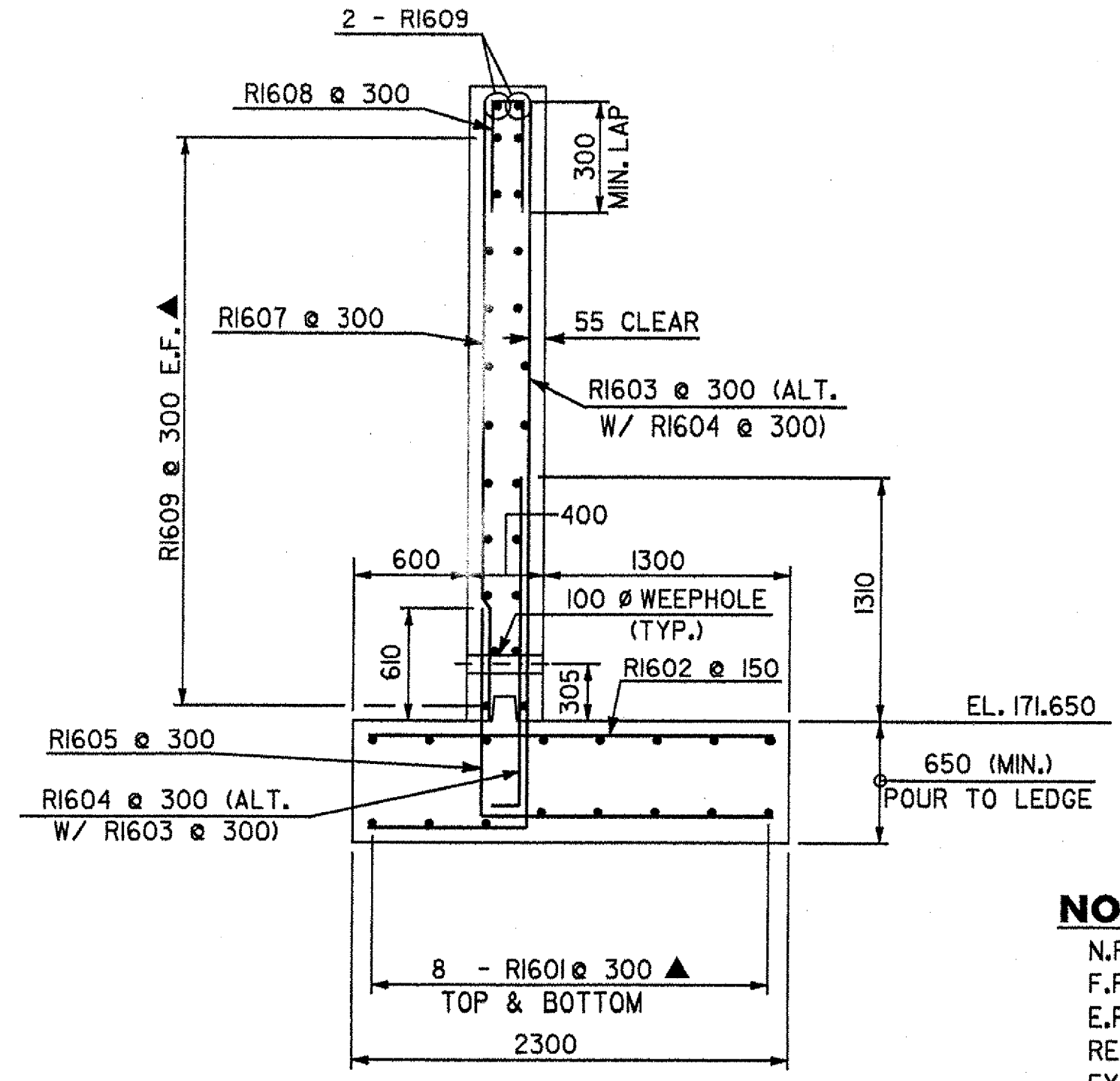
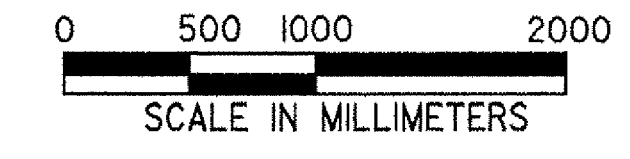
**SECTION G-G**



**SECTION E-E AT RETAINING WALL**



**SECTION F-F AT RETAINING WALL**



**SECTION D-D AT RETAINING WALL**



**NOTES:**  
 N.F. - NEAR FACE  
 F.F. - FAR FACE  
 E.F. - EACH FACE  
 REINFORCING COVER 80 CLEAR ON ALL FACES EXCEPT WHERE NOTED.  
 MINIMUM LAP LENGTH FOR HORIZONTAL #16 BARS IS 610 UNLESS NOTED OTHERWISE.  
 ▲ - CUT TO FIT IN FIELD  
 \* - PLACED RADIAL.  
 FOR LOCATION OF SECTIONS E-E AND G-G, SEE SHEET BR128.

<b>STATE OF VERMONT          AGENCY OF TRANSPORTATION</b>		
Town Of	HARTLAND	Bridge No. 60
Highway No.	U.S. ROUTE 5	Log Sta. Surv. Sta.
U.S. ROUTE 5 OVER LULLS BROOK		
<b>RETAINING WALL DETAILS</b>		
Designed By	S. BAKI	Drawn By B. TYLER
Checked By	Date	Bridge Design Supervisor S. BAKI J. MIECZKOWSKI Date
PROJECT	HARTLAND	PROJECT NO. BRS No. 0113(22)
I.G.C. Info. M:\1456201\VAOT Hartland\struct\z\204rml.dgn		
Bridge Sheet No.	BR129	Sheet 64 of 86